

Measuring and monitoring relays

CM range

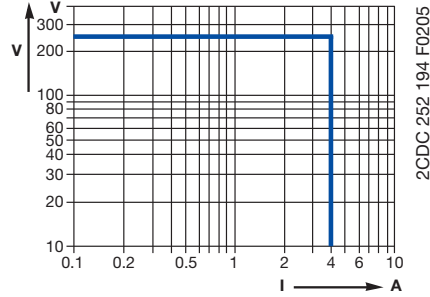
Technical diagrams

2

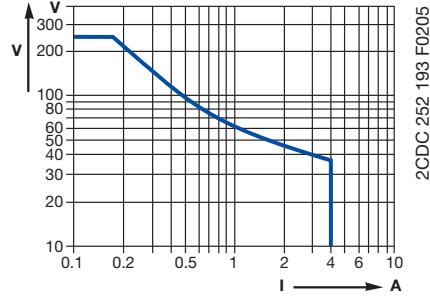
Load limit curves

CM-S (22.5 mm), CM-E (22.5 mm)

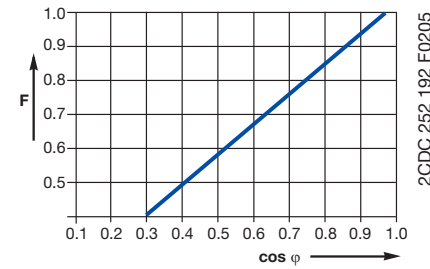
AC load (resistive)



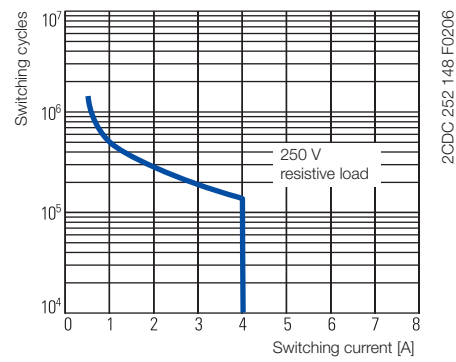
DC load (resistive)



Derating factor F for inductive AC load

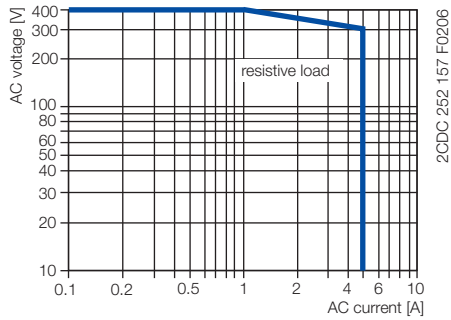


Contact lifetime

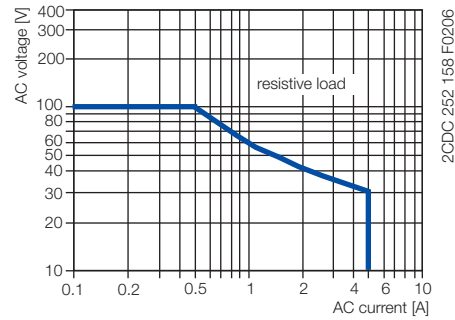


CM-N (45 mm)

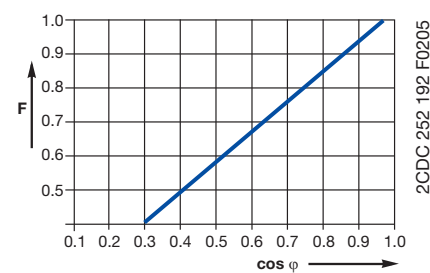
AC load (resistive)



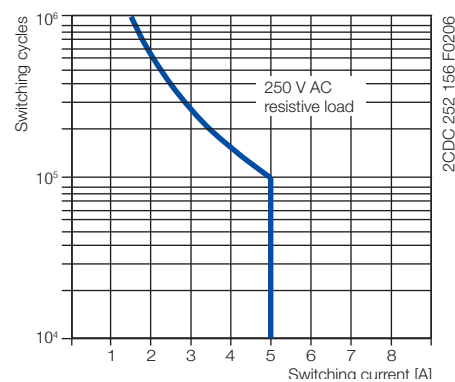
DC load (resistive)



Derating factor F for inductive AC load



Contact lifetime

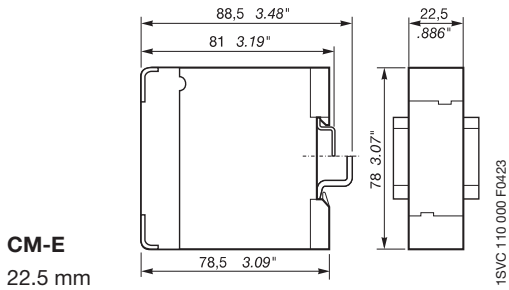
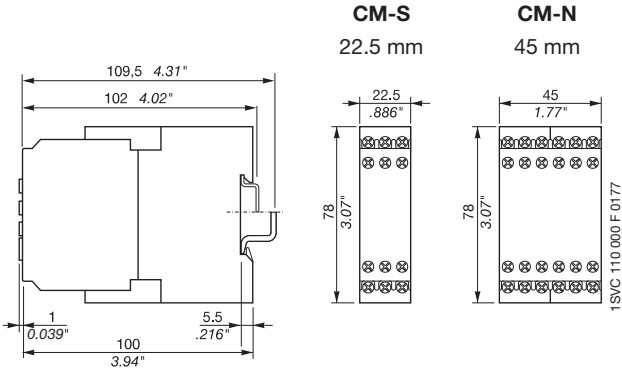


Measuring and monitoring relays CM and C51x Dimensional drawings

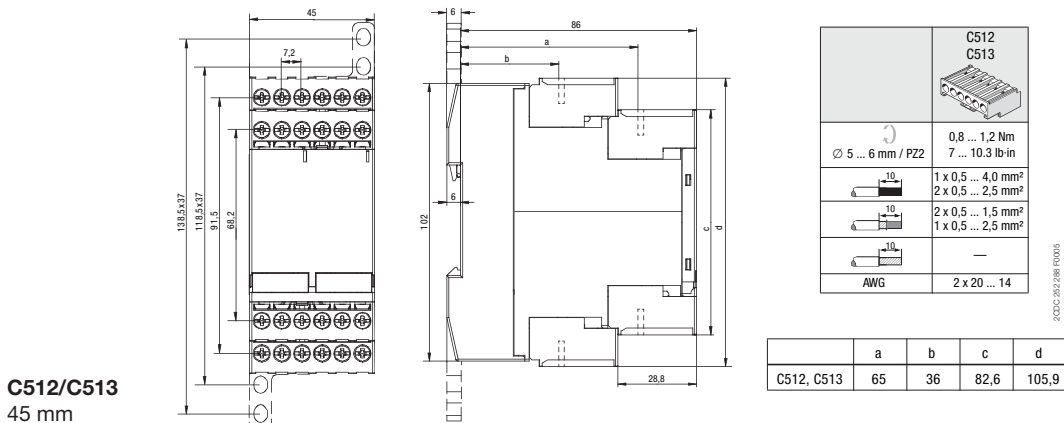
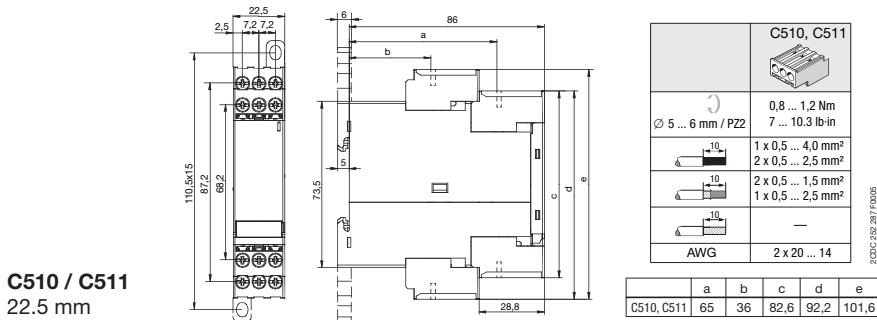
Dimensional drawings

Dimensions in mm

Measuring and monitoring relays CM range



Temperature monitoring relays C51x range

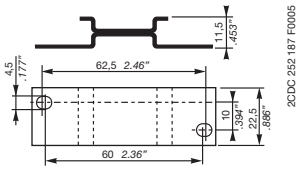


Measuring and monitoring relays

Accessories for CM range

Ordering details

2



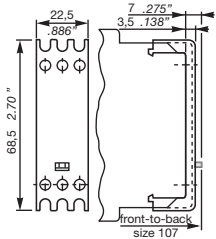
ADP.01

2CDC 252 187 F0005



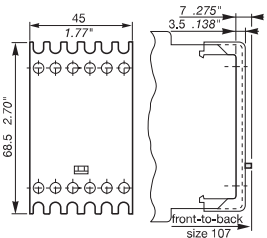
MAR.01

2CDC 252 186 F0005



**Sealable cover
COV.01**

2CDC 252 185 F0005



**Sealable cover
COV.02**

1SVC 110 000 F 0180

Accessories

Adapter for screw mounting

Type	for type	Width in mm	Order code	Pack. unit pieces	Price 1 piece	Weight 1 piece g / oz
ADP.01	CM-S	22.5	1SVR 430 029 R0100	1		18.4/0.65
ADP.02	CM-N	45.0	1SVR 440 029 R0100	1		36.7/1.30

Marker label

Type	for type	for devices	Order code	Pack. unit pieces	Price 1 piece	Weight 1 piece g / oz
MAR.01	CM-S, CM-N	without DIP switches	1SVR 366 017 R0100	10		0.19/0.007
MAR.02	CM-S, CM-N	with DIP switches	1SVR 430 043 R0000	10		0.13/0.005

Sealable transparent cover

Type	for type	Width in mm	Order code	Pack. unit pieces	Price 1 piece	Weight 1 piece g / oz
COV.01	CM-S	22.5	1SVR 430 005 R0100	1		5.2/0.18
COV.02	CM-N	45.0	1SVR 440 005 R0100	1		7.7/0.27

Accessories for measuring and monitoring relays

Current transformers CM-CT

Ordering details

2CDC 251 002 F0005



CM-CT

2CDC 251 003 F0005



CM-CT with mounted accessories

2CDC 251 159 F0006



CM-CT-A mounted on DIN rail

Plug-in current transformers CM-CT

- Without primary conductor though with foot angle, insulating protective cap and bar fastening screws
- Primary / rated current from 50 A to 600 A
- Secondary current of 1 A or 5 A
- Class 1

Secondary current 1 A

Type	Rated / primary current	Burden / class	Order code	Pack. unit pieces	Price 1 piece
CM-CT 50/1	50 A	1 VA / 1	1SVR 450 116 R1000	1	
CM-CT 75/1	75 A	1.5 VA / 1	1SVR 450 116 R1100	1	
CM-CT 100/1	100 A	2.5 VA / 1	1SVR 450 116 R1200	1	
CM-CT 150/1	150 A	2.5 VA / 1	1SVR 450 116 R1300	1	
CM-CT 200/1	200 A	2.5 VA / 1	1SVR 450 116 R1400	1	
CM-CT 300/1	300 A	5 VA / 1	1SVR 450 117 R1100	1	
CM-CT 400/1	400 A	5 VA / 1	1SVR 450 117 R1200	1	
CM-CT 500/1	500 A	5 VA / 1	1SVR 450 117 R1300	1	
CM-CT 600/1	600 A	5 VA / 1	1SVR 450 117 R1400	1	

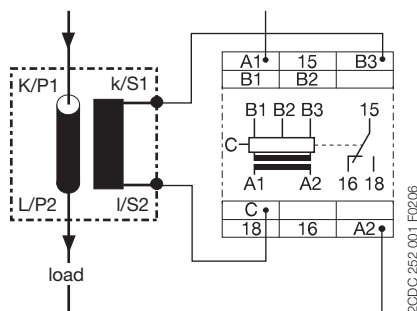
Secondary current 5 A

Type	Rated / primary current	Burden / class	Order code	Pack. unit pieces	Price 1 piece
CM-CT 50/5	50 A	1 VA / 1	1SVR 450 116 R5000	1	
CM-CT 75/5	75 A	1.5 VA / 1	1SVR 450 116 R5100	1	
CM-CT 100/5	100 A	2.5 VA / 1	1SVR 450 116 R5200	1	
CM-CT 150/5	150 A	2.5 VA / 1	1SVR 450 116 R5300	1	
CM-CT 200/5	200 A	5 VA / 1	1SVR 450 116 R5400	1	
CM-CT 300/5	300 A	5 VA / 1	1SVR 450 117 R5100	1	
CM-CT 400/5	400 A	5 VA / 1	1SVR 450 117 R5200	1	
CM-CT 500/5	500 A	5 VA / 1	1SVR 450 117 R5300	1	
CM-CT 600/5	600 A	5 VA / 1	1SVR 450 117 R5400	1	

Accessories

Type	Description	Order code	Pack. unit pieces	Price 1 piece
CM-CT-A	Snap-on fastener for DIN rail mounting of CM-CT	1SVR 450 118 R1000	10	

Operating principle / circuit diagram



Dimensional drawing

