

Enclosed Rotary Cam Switches CamLine



Enclosed rotary
cam switches
now available:

ON-OFF Switches
Key Switches
Change-Over Switches
Reversing Switches
Star Delta Switches
Ventilation Switches
Special Switches

- Easy to install due to spacious cabling area
- Protection degree IP 65
- Separate enclosure for special switches
(max. 3 contact blocks = 6 contacts)
- Special and additional frontplates available on request
- Padlockable handles available on request





Low Voltage Products

Technical Data / Ordering Information

	Number of poles	Function	Size of package [mm] (4 pcs / package)	Type	Ordering number	Package [pcs]	Weight [kg]
Enclosed cam switches							
ON-OFF switches	1	O - I	200X147X151	ONA1EPB	1SCA022662R3330	4	1,2
	2	O - I	200X147X151	ONA2EPB	1SCA022662R3410	4	1,2
	3	O - I	200X147X151	ONA3EPB	1SCA022662R3500	4	1,2
	4	O - I	200X147X151	ONA4EPB	1SCA022662R3680	4	1,2
Key switch ¹⁾	3	O - I	305X215X185	ONA3EKB	1SCA022662R3760	4	1,2
Change-over switch, 1 pole	1	I - O - 2	200X147X151	ONU1EPB	1SCA022662R3840	4	1,2
Reversing switch	3	I - O - 2	200X147X151	ONW3EPB	1SCA022662R3920	4	1,2
Star delta switch ¹⁾	-	O - Y - Δ	305X215X185	ONSDEPB	1SCA022662R4140	4	1,2
Ventilation switch	2	A - O - 1/2 - I	200X147X151	ONST301EPB	1SCA022662R4220	4	1,2
Empty enclosure for special mounting of cam switches							
max. size of ON-switch: 3 contact blocks - 6 contacts, 22,5 mm cover drilling, suits with ON_PB and ON_PG cam switches			305X215X185	OTCK0M	1SCA022660R2330	4	1,2

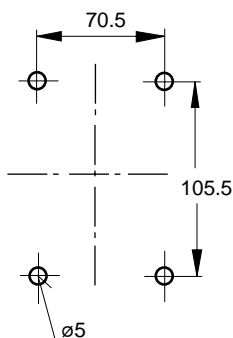
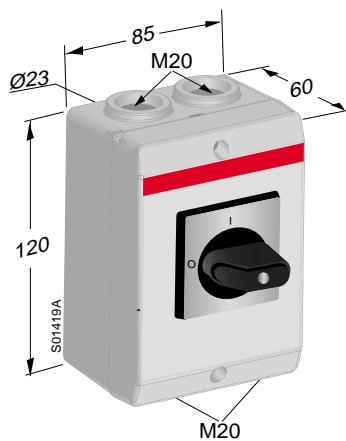
¹⁾With enclosure OTCK0M.

More information about cam switches, in brochure OM_ON 1 GB

Dimension drawings

ONA_EPB
ONU1EPB
ONW3EPB
ONST301EPB

Threaded 2xM20 cable entries on top and bottom, pull-stoppers and membrane cable glands (2 pcs) included in the delivery.



ONA3EKB
ONSDEPB
OTCK0M

Cable entries: knock-out opening 2xM25 on top and bottom. knock-out opening 2xM20 on the side of the enclosure.

