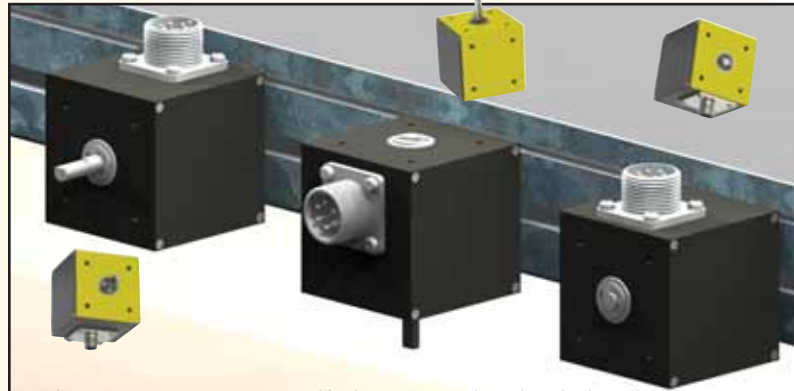


A CUBE SOLUTION FOR EVERY ENVIRONMENT



Cube Features And Benefits:

Multiple Mounting Surfaces Eases Installation



End Mount, Bottom Mount, or Shaft Mount, makes the shaft and connector location in perfect alignment for an easy installation. Also, being able to mount the Cube away from a harsh environment benefits many applications.

Popular Models Include:

Single Channel- Model 711
 Quadrature- Model 716
 Timed Pulse Output- Model 715



Single or Double Shaft Options

Many Connector Options



The Accu-Coder™ E-Cube Advantage:

- Opto-ASIC Accuracy
- Higher Frequency Response
- More Available Shaft Sizes
- Sealing to IP65
- Able to Handle Higher Temperatures
- Now Available With Resolutions Up To 10,000 CPR



Cube Housing Options:

Standard Housing



- *The Original Cube Encoder*
- Single or Double Ended Shafts
- Tapped Mounting Holes on 3 Sides
- Multiple Shaft Sizes
- 2.25" x 2.25" Cube
- Thousands of Configurations

Industrial Housing



- More Robust Standard Cube
- 2.5" x 2.5" Cube
- Wall Thickness 0.187"
- IP65 Shaft Seal
- Single or Double Ended Shafts
- Tapped Mounting Holes on 3 Sides

Heavy Duty Housings

All Heavy Duty housings provide mechanical isolation via a flexible coupling to an internally mounted Cube encoder. Extra thick 0.250" walls provide additional protection from the outside environment.

HD12



- Heavy Duty**
- Popular Housing Style
 - Sealing to IP65
 - 40 lb Radial Load
 - 30 lb Axial Load

HD10



- ULTRA Heavy Duty**
- Sealing to IP65
 - 95 lb Radial Load
 - 60 lb Axial Load
 - Beefy 0.500" or 0.625" Stainless Steel Shaft

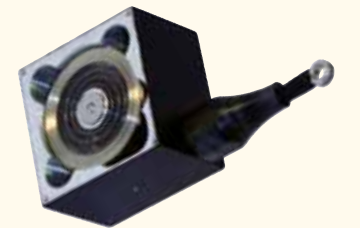
"Cut To Length" Is The Most Common Cube Application- Whether It Is In The Paper, Textile, Metal, Plastic, Or Wood Industries



Cube Accessories:



Double and Single Pivot Mounting Brackets Mount Measuring Wheels To Cube



The LCA Converts A Cube Encoder Into A Linear Measurement Encoder



Explosion Proof Housing For Critical Environments

