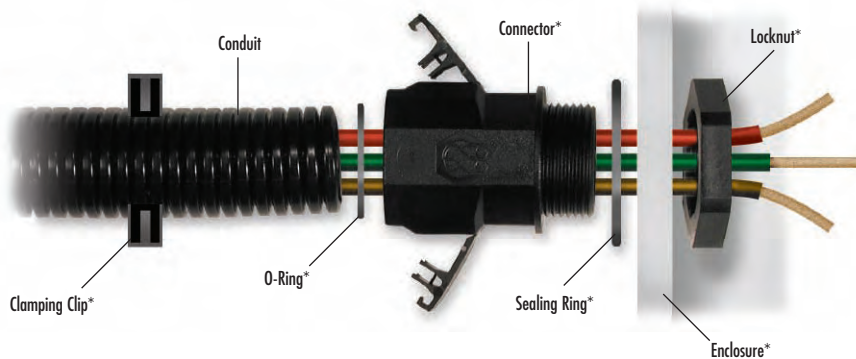


POLYFLEX[®], PA 6 normal profile conduit



PROTECTION RATING

IP54 / **IP67**

without sealing

with sealing ring and O-Ring

Material:

- Polyamide 6

Upper temperature range:

- Short-term: 150°C, (302°F)

Characteristics:

- Parallel corrugated
- Gray available

Technical properties:

- Flame retardant according to FMVSS302 and UL94
- Halogen free
- Durable
- UV resistant according to DIN EN ISO 8580

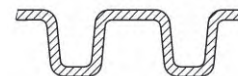
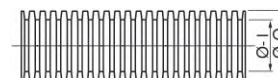
Applications:

Engine compartment, car body and interior, machines, instruments, devices, ship and train building, switch cabinet and movable machine parts.

Temperature Range PA 6
-40 to 120°C (-40 to 248°F)



E81472



NW	Ø-1 mm	Ø-0 mm	Bending Radius mm	Cat. No. Black	Std. Pk. M
7.5	6.7	10.0	13	1200070	50
8.5	8.4	11.7	15	1200089	50
10	9.9	13.0	20	1200100	50
12	12.2	15.7	30	1200127	50
13	12.7	15.8	35	1200135	50
14	14.2	18.5	40	1200143	50
16	15.0	18.9	45	1200160	50
17	16.6	21.2	45	1200178	50
19	19.3	24.3	50	1200194	50
22	21.3	25.4	50	1200224	50
23	23.2	28.3	55	1200232	50
26	25.8	31.2	60	1200267	25
29	29.0	34.5	65	1200291	25
37	36.0	42.4	90	1200372	25
50	47.7	54.0	100	1200500	25

Fitting conduit glands and accessories:

see pages 49-51.

* Sold separately.

Conduit Gland SEM Straight, quick-mounting system for corrugated tubes Polyflex PA 6

Material:
Polyamide 66

Technical properties:

- Easy and tight mounting
- Special click- in system
- Grasps from the outside

- Corrugated pipe can be rotated within the mounting gland
- No halogen

Application fields:

All fields using corrugated tubes

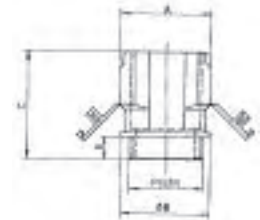
Mounting instructions:

Insert the corrugated tube with a short twist all the way into the end of the SEM conduit gland.



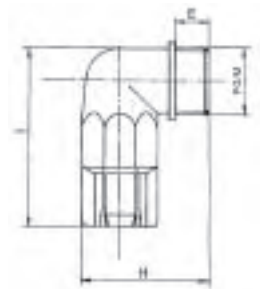
Temperature Range PA 6
-25 to 100° C (-13 to 212° F)

Thread	Fits for NW	E mm	SW mm	A mm	B mm	C mm	Cat. No. Black	Std. Pk.
PG								
PG 7	8.5	10	15	20.2	16	39	3800075	50
PG 7	12	10	19	24	21	40.3	3802070	50
PG 9	10	10	18	21.3	20	39.5	3800091	50
PG 9	12	10	19	24	21	40.3	3802091	50
PG 11	12	10	19	24	20.8	40.5	3800113	50
PG 11	13	10	20	24.8	22	40	3800114	50
PG 11	17	10	26	29.6	29	40.6	3802112	100
PG 13.5	10	7	22	26.7	23.6	40	3802132	50
PG 13.5	14	10	22	26.7	23.6	40	3800130	50
PG 16	17	10	26	29.6	28.9	40.6	3800164	50
PG 21	22	11	30	35	34	46	3800211	25
PG 21	23	11	32	37.6	35	47.7	3800210	25
PG 29	29	12	41	45.2	45	53.8	3800296	20
PG 36	37	12	50	54	56.8	57.4	3800369	10
PG 48	50	12	64	65.3	72.2	57.7	3800482	5
Metric								
M 12 x 1.5	10	10	18	21.9	20	40	3803410	50
M 16 x 1.5	10	15	18	21.8	19.8	45	3803413	50
M 16 x 1.5	13	10	19	24	20.9	40	3803412	50
M 20 x 1.5	17	10	26	29.6	28.9	40	3803418	50
M 25 x 1.5	22	15	30	34.7	33.8	50	3803434	25
M 25 x 1.5	23	10	30	38.2	35	45	3803424	25
M 32 x 1.5	29	12	41	45	44.6	54	3803429	20



Conduit Gland SEM/W-angled 90°

Thread	Fits NW	E mm	I mm	H mm	Cat. No. Black	Std. Pk.
PG						
PG 7	8.5	10	46	32	7303076	25
PG 9	10	10	53	35	7303092	25
PG 11	12	10	54.5	35.5	7303114	25
PG 13.5	14	10	58.5	39.5	7303130	25
PG 16	17	11	59	42.5	7303165	25
PG 21	23	11	74	49.5	7303211	25
PG 21	22				7303212	
PG 29	29	12	89	59	7303297	10
PG 36	37	12	107	70	7303360	5
PG 48	50	13	121	85	7303483	5
Metric						
M 16 x 1.5	10	10	55	40	7303717	25
M 16 x 1.5	13	15	56	40.5	7303718	25
M 20 x 1.5	17	15	62	47	7303721	25
M 25 x 1.5	22	15	77	53.5	7303726	25
M 32 x 1.5	29	15	93	62.5	7303733	10



Notes:

* Without sealing ring

** With sealing ring.

Sealing Ring, Neoprene

Material:
Neoprene, black

Characteristic feature:
PG and metric thread

Connecting thread	External diameter mm	Internal diameter mm	Thickness mm	Cat. No.	Std. Pk.
PG					
PG 7	17	11.3	1.2	8113301	100
PG 9	20	13.9	1.2	8113302	100
PG 11	23	17.1	1.2	8113303	100
PG 13.5	25	19	1.2	8113304	100
PG 16	27	21	1.2	8113305	100
PG 21	34	26.6	1.5	8113306	50
PG 29	45	35.2	1.5	8113307	50
PG 36	56	45.2	1.5	8113308	50
PG 42	67	52.2	1.5	8113309	50
PG 48	72	57.7	1.5	8113310	50
Metric					
M 12	15	10	1.2	8113490	100
M 16	20	14	1.2	8113302	100
M 20	24	18	1.2	8113492	100
M 25	30	23	1.2	8113493	100
M 32	40	30	1.5	8113494	100

Temperature Range
-25 to 100° C (-13 to 212° F)



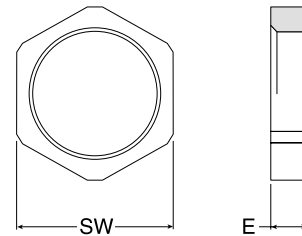
Lock Nuts, Polyamide

Material:
Polyamide 6
25 % Glass fiber Reinforced

Characteristic feature:
PG and metric thread

Thread	Thickness (E) mm	SW mm	Cat. No. Black	Std. Pk.
PG (DIN 46 320)				
PG 7	5	19	7211851	50
PG 9	5	22	7211852	50
PG 11	5	24	7211853	50
PG 13.5	6	27	7211854	50
PG 16	6	30	7211855	50
PG 21	6.5	36	7211856	20
PG 29	7.5	46	7211857	20
PG 36	8	60	7211858	10
PG 42	9	65	7211859	5
PG 48	9.5	70	7211860	5
Metric				
M 12 x 1.5	5	19	7211974	50
M 16 x 1.5	5	22	7211975	50
M 20 x 1.5	5	24	7211976	50
M 25 x 1.5	6	30	7211977	50
M 32 x 1.5	7.5	38	7211978	50

Temperature Range PA
-30 to 120° C (-22 to 248° F)



O-Ring

Material:

Perbunan

Characteristic feature:

Shore: 70 ± 5

Feature:

The O-ring must be mounted into the first groove of the corrugated tube

The Corrugated tube, with its pre-mounted sealing ring, must be inserted into the SEM gland and simply twisted into the end.

Temperature Range
-25 to 100° C (-13 to 212° F)

Fits for NW	Internal Diameter mm	Thickness mm	Cat. No.	Std. Pk.
8.5	9.0	1.0	8112600	100
10	8.9	1.25	8112601	100
12	8.5	1.5	8112602	100
13	8.1	1.6	8112603	100
14	12.5	1.5	8112604	100
17	15.0	1.5	8112605	100
22	15.0	1.5	8112606	100
23	17.0	2.5	8112607	100
29	23.0	2.5	8112608	100
37	23.0	2.5	8112609	100
50	31.0	2.5	8112610	100



Clamping clip for corrugated tubes

Material:

Polyamide

Color:

Black

Temperature Range
-25 to 100° C (-13 to 212° F)

Suitable for NW	L mm	H mm	D mm	Cat. No.	Std. Pk.
8.5/10	30.0	23.0	13.0	8218102	100
12/13	30.0	23.0	13.0	8218137	100
14	31.0	24.0	13.0	8218140	100
17	35.0	30.0	15.0	8218170	100
22/23/26	42.0	38.0	16.0	8218234	100
29	51.0	49.0	16.0	8218293	50
37	61.0	51.0	18.0	8218374	50
50	74.0	64.0	19.0	8218501	50

