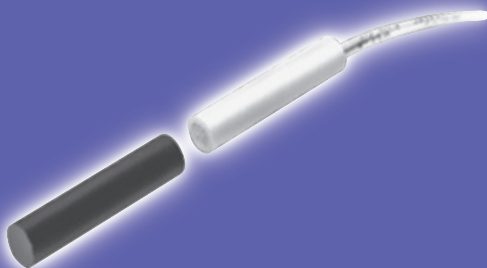




## GE Magnetic Contacts

### 1055/58 Series

1/4" Diameter Recessed with Wire Leads



<b>Gap Distance</b>	<b>Closed Loop</b>
<i>Regular (up to 1/2")</i>	1055
<i>Wide (up to 1 1/4")</i>	1055W
<i>Stubby (up to 1/2")</i>	1058 (not CUL Listed)

<b>Color</b>	White, Mahogany Brown
<b>Quantity</b>	10

100% **TESTED**



604S

Connectors and Switches

1055-N



# 1055/58 Series

1/4" Diameter Recessed with Wire Leads

## Installation Instructions

### Mounting on Wood

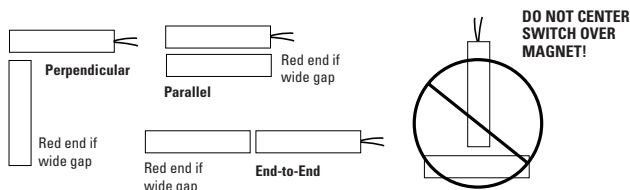
- 1: Slightly overdrill a 1/4" diameter hole for the contact and coat the outside of the contact with RTV mounting compound (part number 1905); press into hole.
- 2: Drill a 1/4" x 1/4" hole for the magnet (3/8" x 1 1/2" for 1056 magnet) and press into hole.
- 3: To improve appearance or to camouflage the contact, a wood filler of the same color as the surrounding wood can be used to cover the hole after the contact is inserted.

### Mounting on Aluminum Sliding Windows and Doors

- 1: Attach the contact and magnet with RTV mounting compound (part number 1905) or epoxy.

NOTE: With wide gap contacts (1055W), be certain that the red end of the magnet is away from the contact.

### Mounting Positions



## UL Specifications

Part Number	Loop Type	Electrical Configuration	Gap Distance (Up to)*
1055	Closed	N.O.	1/2"
1055W	Closed	N.O.	1 1/4"
1058 (not CUL listed)	Closed	N.O.	1/2"

\*\* European Union Specifications: 48 V AC/DC Max., 0.5 Amp

### \*\* FORM A

Voltage: 100 V AC/DC Max

Current: 0.5 A Max

Power: 7.5 W Max

\*Gap specifications are nominal and may vary  $\pm 20\%$  due to temperature. Gap specifications are for switch to make. Break distance is approximately 1.1 to 1.5 times make.

## CUL Specifications

All Contacts: 30 VDC, 50 mA max

Gap Specifications:\* See UL Gap Specifications



GE Interlogix

Phone: 800.894.0412 - Fax: 888.723.4773 - Web: www.clrwr.com - Email: info@clrwr.com