



GE Magnetic Contacts

1078C Series

3/4" Diameter Steel Door



| Gap Distance | | Loop | SPDT |
|--------------|---------|---------------------------------------------------------|-----------------------------------------------------|
| In Steel | In Wood | Closed/Open | |
| Up to 3/8" | 7/8" | 1078C | 1076C |
| Up to 3/4" | 2" | 1078CW / 1077CW <small>(no Canadian listing)</small> | 1076CW |
| Up to 3/8" | 5/8" | | 1076CD DPDT <small>(no Canadian listing)</small> |

| | |
|-----------------|-----------------------|
| Color | White, Mahogany, Grey |
| Quantity | 10 |

100% **TESTED**



604S
Connectors and Switches

1078C-M

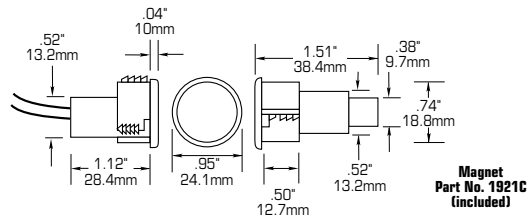


1078C Series

3/4" Diameter Steel Door with Wire Leads

Installation Instructions

1. Drill appropriate diameter and depth holes for contact and magnet. Hole saw arbors available from GE.
 Holes required except for 1076CD: Contact-3/4" x 1 1/8"
 Magnet-3/4" x 1 1/2"
 Holes required for 1076CD: Contact-3/4" x 1 1/2"
 Magnet-3/4" x 1 1/2"
2. Connect contact leads to security system loop and test for continuity.
3. Lightly coat the contact and magnet with RTV mounting compound (part number 1905) and insert into respective holes.



| Part Number | Loop Type | Electrical Configuration | Gap Distance | |
|---------------------------------|----------------|--------------------------|--------------|---------|
| | | | In Steel | In Wood |
| 1076C | Open or Closed | SPDT | Up to 3/8" | 7/8" |
| 1076CW | Open or Closed | SPDT | Up to 3/4" | 2" |
| 1076CD (no Canadian listing) | Open or Closed | DPDT | Up to 3/8" | 5/8" |
| 1077CW (no Canadian listing) | Open | N/C | Up to 3/4" | 2" |
| 1078C | Closed | N/O | Up to 3/8" | 7/8" |
| 1078CW | Closed | N/O | Up to 3/4" | 2" |

** FORM A (1078, 1078W)

Voltage: 100V AC/DC max
 Current: 0.5A max
 Power: 7.5W max

FORM B (1077CW)

Voltage: 30V AC/DC max
 Current: 0.25A max
 Power: 3.0W max

FORM C (1076C, 1076CW)

Voltage: 30V AC/DC max
 Current: 0.25A max
 Power: 3.0W max

* Gap specifications are nominal and may vary $\pm 20\%$. Gap specifications are for switch to make. Break distance is approximately 1.1 to 1.5 times make.

** European Union Specifications: 48V AC/DC Max., 0.5 Amp

WARNING: Each electrical rating is an individual maximum and cannot be exceeded!

C-UL Specifications

All Contacts: 30V DC, 50 mA max

Gap Specifications:
 See UL Gap Specifications

