



GE Magnetic Contacts

1125 Series

3/8" Diameter Stubby Press Fit with Wire Leads



Gap Distance	Closed Loop
<i>Regular 1/4"</i>	1125
<i>Wide 3/4"</i>	1125W

Color	<i>White, Mahogany Brown</i>
Quantity	10

100% **TESTED**



1125 Series

3/8" Diameter Stubby Press Fit with Wire Leads

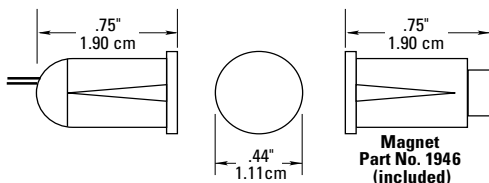
Installation Instructions

Drill Mounting in Wood

Drill 3/8" diameter holes 3/4" deep for both the contact and the magnet. Press them into their respective holes.

Mounting in Aluminum Sliding Windows and Doors

Do not overdrill. Attach contact and magnet with RTV mounting compound or epoxy.



UL Specifications

Part Number	Loop Type	Electrical Configuration	Gap Distance (Up To)*	Magnet Length
1125	Closed	N.O.	1/4"	3/4"
1125W	Closed	N.O.	3/4"	3/4"

* Gap Specifications are nominal and may vary $\pm 20\%$. Gap Specifications are for switch to make. Break distance is approximately 1.1 to 1.5 times make.

** European Union Specifications: 48 V AC/DC max, 0.5 Amp

** FORM A (1125, 1125W)

Voltage: 100 V AC/DC max

Current: 0.5 A max

Power: 7.5 W max

WARNING: Each electrical rating is an individual maximum and cannot be exceeded!

C-UL Specifications

All Contacts: 30 VDC, 50 mA max

Gap Specifications:*
See UL Gap Specifications

