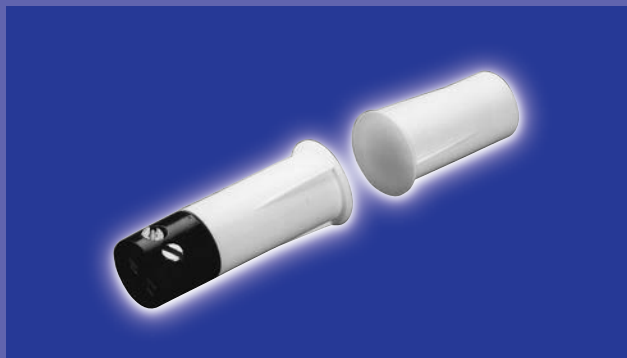




GE Magnetic Contacts

1125T Series

3/8" Diameter Stubby Recessed



Gap Distance	Closed Loop
<i>Regular 3/8"</i>	1125T
<i>Wide 3/4"</i>	1125TW

Color	<i>White, Mahogany</i>
Quantity	10

100% **TESTED**



604S

Connectors and Switches



1125T Series

3/8" Diameter Stubby Recessed with Terminals

Installation Instructions

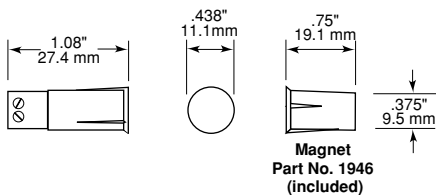
Drill Mounting in Wood

Drill 3/8" diameter holes 1" deep for the contact and 3/4" deep for the magnet (1 1/4" deep for the 1125TW magnets). Strip wire from security system loop, insert into terminal block and tighten. Test for continuity. Press them into their respective holes.

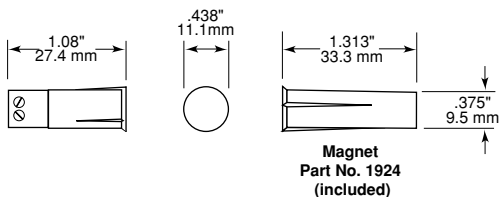
Mounting in Aluminum Sliding Windows and Doors

Do not overdrill. Attach contact and magnet with RTV mounting compound or epoxy.

1125T



1125TW



UL Specifications

Part Number	Loop Type	Electrical Configuration	Gap Distance (Nominal/Min. make/Max. break)*
1125T	Closed	N.O.	3/8" / 1/4" / 1"
1125TW	Closed	N.O.	3/4" / 1/2" / 2"

** European Union Specifications: 48 V AC/DC max, 0.5 Amp

** FORM A (1125T, 1125TW)

Voltage: 100 V AC/DC max

Current: 0.5 A max

Power: 7.5 W max

WARNING: Each electrical rating is an individual maximum and cannot be exceeded!

C-UL Specifications

All Contacts: 30 VDC, 50 mA max

Gap Specifications:
See UL Gap Specifications

