



Non-Contact Interlock Position/Switch

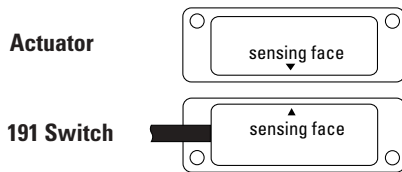
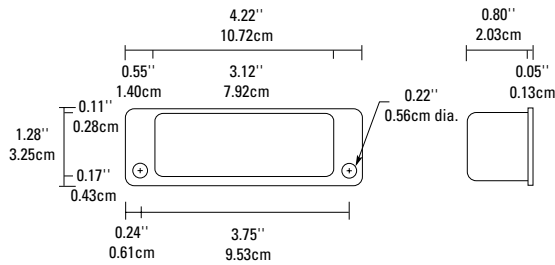
191 GuardSwitch

Applications

- USDA approved
- Food Processing Machines
- Chemical Industry Machinery
- Wash-down Environments

General Specifications

Enclosure	Seamless 304 Stainless Steel
Temperature Range	-40°F to 180°F (-40°C to 80°C)
Environmental	Hermetically Sealed Contact Switch Encapsulated in Polyurethane
NEMA Rating	1, 2, 3, 4, 4X, 5, 6, 12, 12K
Protection Class	IP 67
Response Time	1 msec; 10 msec (150VA)
Life Cycles	100,000 Under Full Load; Up to 200,000,000 Under Dry Circuit
Lead Types/O.D.	18/2 SJTOW (K) / 0.30" (0.76cm) 18/4 SJTOW (K) / 0.34" (0.86cm)
UL/CSA	All Models



INTERLOCK SWITCH
100 SERIES

Part Number	Contact ¹ Config.		Load Rating		Switching Voltage, Max.		Switching Current, Max.		Contact Resistance	Sense Range ²		Break Range Nominal	Lead Length
	AC	DC	AC	DC	AC	DC	AC	DC		Nominal	Nominal		
191-6Z-12K	N.O.	25VA	25W	120V (@0.2A)	120V (@0.2A)	0.7A (@35V)	1.0A (@25V)	0.2 Ohms	1.0" (2.5cm)	2.0" (5.1cm)	12' (3.6m)		
191-7Z-06K	N.O.	100VA	84W	120V (@0.8A)	28V(@3.0A)	3.0A (@34V)	3.0A (@28V) ³	1.0 Ohms	0.5" (1.3cm)	1.8" (4.6cm)	6' (1.8m)		
191-7Z-12K-D3	DPST ³	100VA	84W	120V (@0.8A)	28V(@3.0A)	3.0A (@34V)	3.0A (@28V) ³	1.0 Ohms	0.5" (1.3cm)	1.8" (4.6cm)	12' (3.6m)		
191-7Z-12K	N.O.	100VA	84W	120V (@0.8A)	28V(@3.0A)	3.0A (@34V)	3.0A (@28V) ³	1.0 Ohms	0.5" (1.3cm)	1.8" (4.6cm)	12' (3.6m)		

Warning— Each electrical rating is an individual maximum and cannot be exceeded!

¹ Configuration with actuator away from the switch

² Proximity of ferrous materials usually reduces sense range — typically by 50%. The shape and type of material cause a wide diversity of effects. Testing is required to determine actual sense range for specific applications.

³ DPST: 1 N.O., 1 N.C