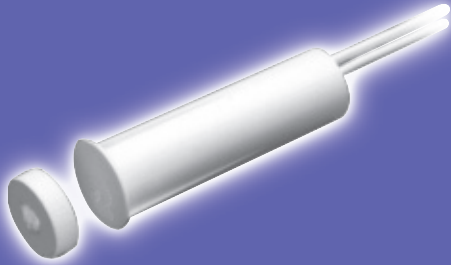




GE Magnetic Contacts

R1075 Series

3/8" Diameter Press Fit with Wire Leads



Gap Distance	Closed Loop
<i>1/2"</i>	<i>R1075</i>
Color	<i>White</i>
Quantity	<i>10</i>

100% **TESTED**



604S

Connectors and Switches

R1075-N



0 46188 06998 9

R1075 Mini-Max Magnetic Contacts

3/8" Diameter Press Fit with Wire Leads

Installation Instructions

Switch

- 1: Drill 3/8" dia. hole 1 1/8" deep for the contact.
- 2: Connect contact leads to security system loop and test for continuity.
- 3: Lightly coat the contact RTV mounting compound (Sentalor part number 1905) and insert into hole.

Magnet

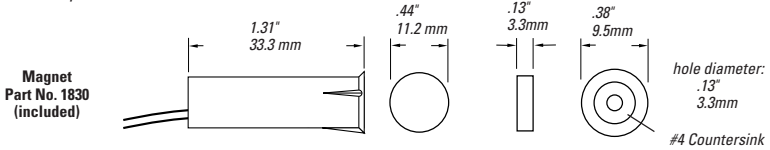
- 1: Mount magnet to double-sided tape (included) and affix to window frame.
- 2: Or, if using stainless steel screw (included), drill 1/16" dia. (using magnet center hole as a guide) and mount using #4 x 1/2" stainless steel screw (included). Use caution if using screw other than the one provided, as it will effect the gap performance.
- 3: Care should be taken not to over tighten screw to avoid damaging magnet or stripping hole.

Recess/Flush Mount Magnet

- 1: Drill 7/16" dia. by approximately 1/8" deep.
- 2: Coat magnet with RTV silicon adhesive and mount into hole.

NOTE: When surface mounting magnet be sure there is enough clearance to prevent the magnet from becoming damaged when closing the window or door.

Standard Gap



C-UL-US Specifications

Part Number	Loop Type	Electrical Configuration	Gap Distance
R1075	Closed	N/O	1/2"

** European Union Specifications: 48 VAC/DC Max., 0.5 Amp

** FORM A (R1075)

Voltage: 100 VAC/DC Max

Current: 0.5 A Max

Power: 7.5 W Max

WARNING: Each electrical rating is an individual maximum and cannot be exceeded!

ULC Specifications

All Contacts: 30 VDC, 50 mA max

Gap Specifications:*



GE Interlogix