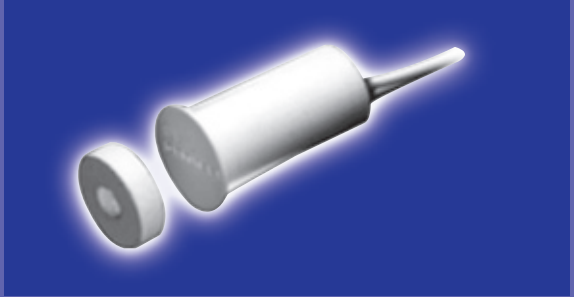




GE Magnetic Contacts

R1125 Series

3/8" Diameter Stubby Press Fit with Mini-Max



Gap Distance	Closed Loop
Regular 1/2"	R1125
Wide 7/8"	R1125W

Color	White
Quantity	10

100% **TESTED**



604S
Connectors and Switches



R1125 Series

³/₈" Diameter Stubby Press Fit with Mini-Max

Installation Instructions

Switch

- 1: Drill ³/₄" dia. hole ¹/₈" deep for the contact.
- 2: Connect contact leads to security system loop and test for continuity.
- 3: Lightly coat the contact RTV mounting compound (GE part number 1905) and insert into respective hole.

Magnet

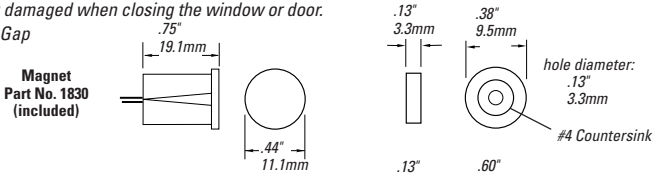
- 1: Mount magnet to double-sided tape (included) and affix to window frame.
- 2: Or, if using stainless steel screw (included), drill ¹/₁₆" dia. (using magnet center hole as a guide) and mount using #4 x ¹/₂" stainless steel screw (included). Use caution if using screw other than the one provided, as it will effect the gap performance.
- 3: Care should be taken not to over tighten screw to avoid damage to magnet or stripping hole.

Recess/Flush Mount Magnet

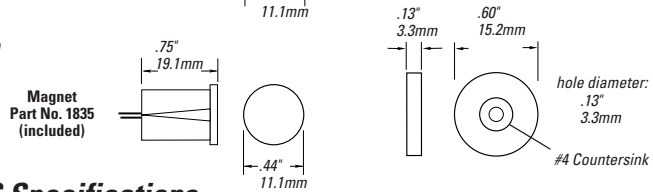
- 1: Drill ⁷/₁₆" dia. hole (standard gap) or ⁵/₈" dia. hole (wide gap) by approximately ¹/₈" deep .
- 2: Coat magnet with RTV silicon adhesive and mount into hole.

NOTE: When surface mounting magnet be sure there is enough clearance to prevent the magnet from becoming damaged when closing the window or door.

Standard Gap



Wide Gap



C-UL-US Specifications

Part Number	Loop Type	Electrical Configuration	Gap Distance
R1125	Closed	N.O.	¹ / ₂ "
R1125W	Closed	N.O.	⁷ / ₈ "

** European Union Specifications: 48 V AC/DC max, 0.5 Amp

** **FORM A (R1125, R1125W)**
 Voltage: 100 V AC/DC max
 Current: 0.5 A max
 Power: 7.5 W max

WARNING: Each electrical rating is an individual maximum and cannot be exceeded!

C-UL Specifications

