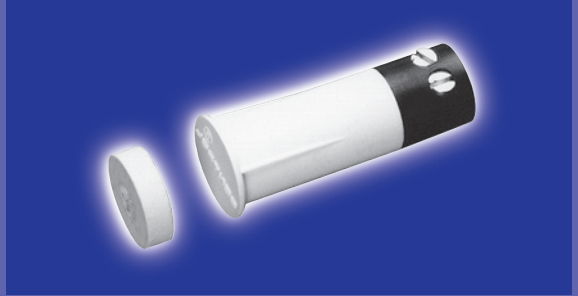




GE Magnetic Contacts

R1125T Series

3/8" Diameter Press Fit with Mini-Max Magnets



Gap Distance	Closed Loop
Regular 1/2"	R1125T
Wide 7/8"	R1125TW

Color	White
Quantity	10

100% **TESTED**



604S

Connectors and Switches



R1125T Series

$\frac{3}{8}$ " Diameter Press Fit with Mini-Max Magnets

Installation Instructions

Switch

- 1: Drill $\frac{3}{8}$ " dia. hole $\frac{1}{8}$ " deep for the contact.
- 2: Strip wire from security system loop, insert into terminal block and tighten. Test for continuity.
- 3: Lightly coat the contact RTV mounting compound (GE part number 1905) and insert into respective hole.

Magnet

- 1: Mount magnet to double-sided tape (included) and affix to window frame.
- 2: Or, if using stainless steel screw (included), drill $\frac{1}{16}$ " dia. (using magnet center hole as a guide) and mount using #4 x $\frac{1}{2}$ " stainless steel screw (included). Use caution if using screw other than the one provided, as it will effect the gap performance.
- 3: Care should be taken not to over tighten screw to avoid damage to magnet or stripping hole.

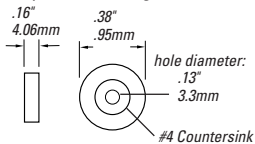
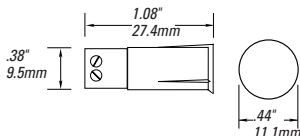
Recess/Flush Mount Magnet

- 1: Drill $\frac{7}{16}$ " dia. hole (standard gap) or $\frac{5}{8}$ " dia. hole (wide gap) by approximately $\frac{1}{8}$ " deep .
- 2: Coat magnet with RTV silicon adhesive and mount into hole.

NOTE: When surface mounting magnet be sure there is enough clearance to prevent the magnet from becoming damaged when closing the window or door.

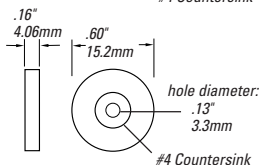
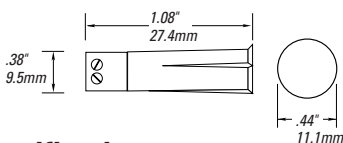
Standard Gap

Magnet
Part No. 1830
(included)



Wide Gap

Magnet
Part No. 1835
(included)



C-UL-US Specifications

Part Number	Loop Type	Electrical Configuration	Gap Distance
R1125T	Closed	N.O.	$\frac{1}{2}$ "
R1125TW	Closed	N.O.	$\frac{7}{8}$ "

** European Union Specifications: 48 V AC/DC max, 0.5 Amp

** FORM A (R1125T, R1125TW)

Voltage: 100 V AC/DC max
Current: 0.5 A max
Power: 7.5 W max

WARNING: Each electrical rating is an individual maximum and cannot be exceeded!

C-UL Specifications

