



**R1275 Series
Mini-Max™
Magnetic Contacts**
3/8" Dia. Wing-Fit™
Recessed with Wire Leads

100% TESTED



Gap distance

Closed loop

Open loop

SPDT

Regular 1/2"

R1275

Wide 1"

R1275W

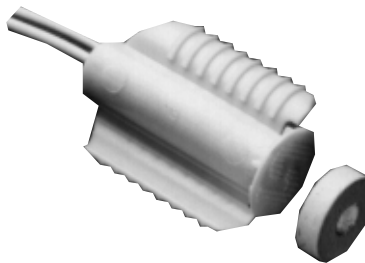
Color

White

Mahogany
brown

Quantity

10



SENTROL

R1275-N



0 46188 06597 4

SENTROL

R1275 Series Wing Fit™ Magnetic Contacts with Mini-Max™ Magnets

Installation Instructions

Switch

- Step 1: Drill 0.375" x 1.00" hole for contact.
- Step 2: Connect contact leads to security system loop and test for continuity.
- Step 3: Lightly coat wings with RTV mounting compound (Sentrol part number 1905) and insert into hole.

Magnet

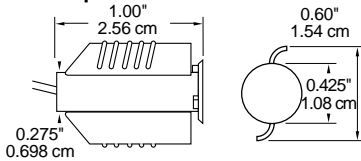
- Step 1: Mount magnet to double-sided tape (included) and affix to window frame.
- Step 2: Or, if using stainless steel screw (included), drill 1/16" diameter (using magnet center hole as a guide) and mount using #4 x 1/2" stainless steel screw (included). Use caution if using screw other than the one provided, as it will effect the gap performance.
- Step 3: Care should be taken not to overtighten screw to avoid damaging magnet or stripping hole.

Recess/Flush Mount Magnet

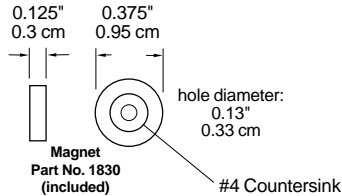
- Step 1: Drill 7/16" dia. hole (standard gap) or 5/8" dia. hole (wide gap) by approximately 1/8" deep.
- Step 2: Coat magnet with RTV or silicon adhesive and mount into hole.

NOTE: When surface mounting magnet be sure there is enough clearance to prevent the magnet from becoming damaged when closing the window or door.

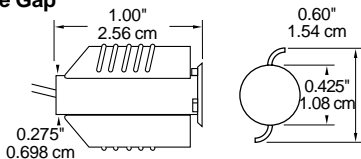
Standard Gap



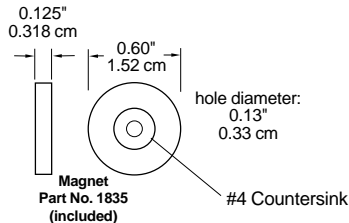
* Note: Wings compress to 0.375" dia.



Wide Gap



* Note: Wings compress to 0.375" dia.



UL LISTED UL SPECIFICATIONS

PART NUMBER	LOOP TYPE	ELECTRICAL CONFIGURATION	GAP DISTANCE (Up To)*
R1275	Closed	N.O.	1/2"
R1275W	Closed	N.O.	1"

FORM A (R1275, R1275W)
Voltage: 100 VAC/DC MAX
Current: 0.5 A MAX
Power: 7.5 W MAX

European Union Specification: 48 V AC/DC Max., 0.5 AMP

* Gap Specifications are nominal and may vary ±20%. Gap Specifications are for switch to make. Break distance is approximately 1.1 to 1.5 times make.

ULC SPECIFICATIONS

ALL CONTACTS: 30 V DC, 50 ma max.

GAP SPECIFICATIONS:*
See UL Gap Specifications



SENTROL

Sentrol reserves the right to change specifications without notice.
©1998 Sentrol

U.S. Patent No. 5,635,887
C-3562-1198
12836 Rev D