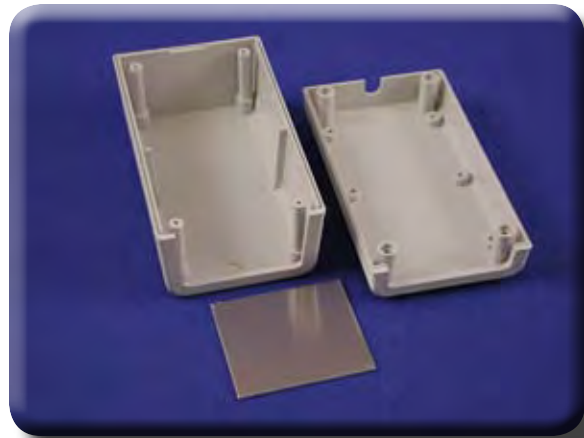


Plastic Bench Case Enclosures (1210 Series)



KEY FEATURES

- The Bench Case is a British designed plastic enclosure.
- Ideally suited for mounting printed circuit boards for use in bench top applications.
- Molded in a choice of black (RAL 9005) or grey (RAL 9018) - flame retardant ABS plastic.
- Satin texture finish.
- Complete with plastic top & bottom, removable aluminum front panel, four rubber self adhesive feet and four self tapping screws.
- The top panel & bottom halves include a flat display area, perfect for labels or silk screening.
- The base is molded with six bosses for easy P.C. board mounting.
- The removable 1.5 mm thick aluminum end pane is securely clamped by the two box halves and easily customized.
- Hole in rear of enclosure for easy cord access.

Part Number		Units	Length	Width	Height
Black	Grey				
1210BK	1210GY	inch mm	5.20 132	2.96 75	2.44 62