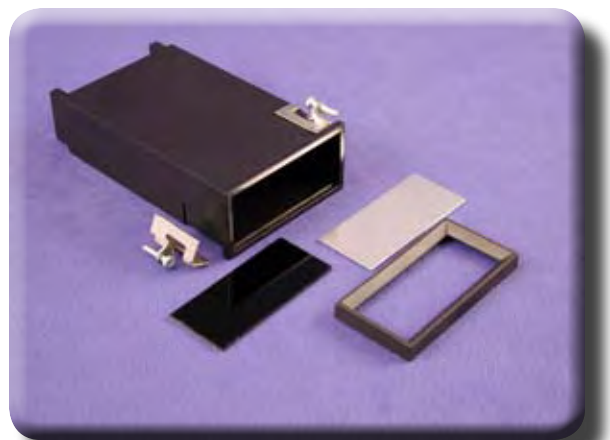


Panel Mounted DIN Enclosures (1212-1216 Series)



KEY FEATURES

- Perfect for enclosing instruments or P.C. boards that need to be panel mounted.
- Molded in black (RAL 9005) flame retardant ABS plastic.
- Conforms with DIN 43700.
- Molded guides for two horizontally mounted P.C. boards (1.6 mm thick).
- Includes two front panels - choose between natural aluminum panel or grey tinted acrylic filter panel.
- Complete with plastic bezel and two metal panel mounting clamps with screws.

Part Number	Color	Units	Length	Width	Height
1212	Black	inch mm	4.72 120	2.83 72	1.42 36
1214	Black	inch mm	2.95 75	3.78 96	1.89 48
1216	Black	inch mm	4.72 120	3.78 96	1.89 48