

## 1414 Series JIC Enclosures - NEMA 12, 13

Clamped, Lift Off Cover

Industrial Enclosures  
Junction Boxes/JIC Enclosures



### Application

- Designed for use as instrument enclosures, electric, hydraulic or pneumatic control housings, electrical junction boxes or terminal wiring enclosures.
- Provides a degree of protection from falling dirt, dust, oil and water.

### Standards

- UL 508 Type 12 and 13
- CSA Type 12 and 13
- **Complies with**
  - NEMA Type 12 and 13
  - JIC EGP-1-1967 unless marked<sup>1</sup>
  - IEC 529, IP65

### Construction

- Body formed from 16 gauge or 14 gauge steel. Covers are formed from 14 gauge steel.
- Smooth, continuously welded seams without knockouts, cutouts or holes.
- Welded brackets provide for enclosure mounting.
- Lift off cover is secured with stainless steel clamps and plated steel screws and retained with a plated chain when open.
- Oil resistant gaskets are permanently secured.
- Models larger than 4" x 4" include a removable 14 gauge inner panel.
- Weldnuts are provided for mounting inner panels.
- A grounding stud is provided in the enclosure.

### Finish

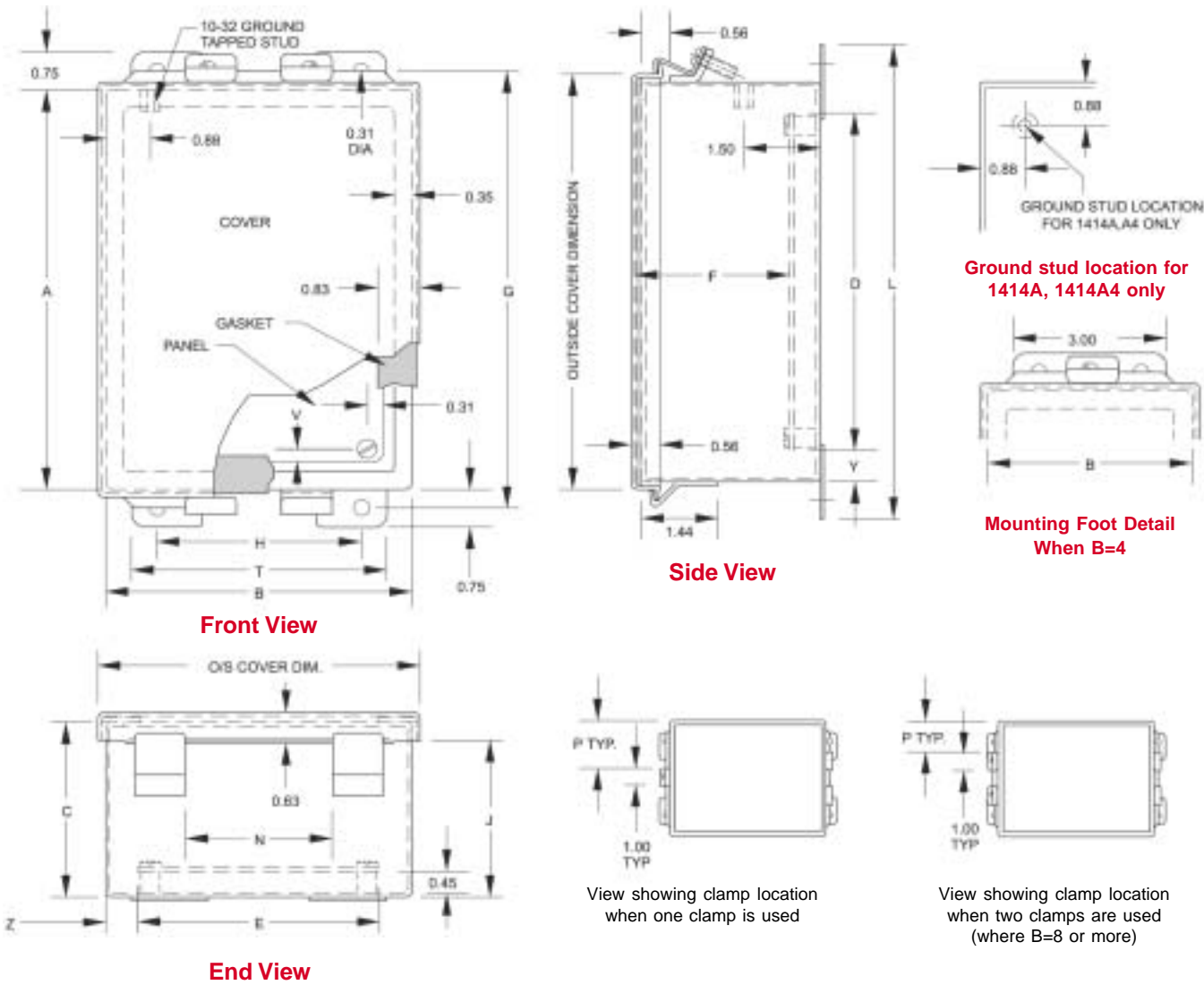
- Cover and enclosure are phosphatized and finished in ANSI/ASA 61 gray recoatable powder coating.
- Removable inner panel is finished in white powder coating.

### Accessories

- Additional inner panels...*see page 384*
- Breather kits...*see page 374*
- Door clamping hardware...*see page 378*
- Filter fans...*see page 360-367*
- Heaters...*see page 369-371*
- Louvered ventilating plates...*see page 396*
- Terminal kit assemblies...*see page 386*
- Thermostats...*see page 374*
- Window kits...*see page 391*

# 1414 Series JIC Enclosures - NEMA 12, 13

## Clamped, Lift Off Cover



**Industrial Enclosures**  
 Junction Boxes/JIC Enclosures

Part No.	Panel Size			Centers				Cover Dimensions							Ship Wt. Lbs.				
	A	B	C	D	E	F	G	H	J	L	N	P	T	V		Y	Z		
1414A <sup>1</sup>	4	4	3.0	—	—	—	4.75	2	2.64	5.5	1.31	4.31	4.31	1.5	3	—	—	—	2
1414C <sup>1</sup>	6	4	3.0	4.88	2.88	2.51	6.75	2	2.64	7.5	1.31	6.31	4.31	1.5	3	0.31	0.56	0.56	3
1414G	8	6	3.5	6.75	4.88	3.01	8.75	4	3.14	9.5	2.88	8.31	6.31	2.5	5	0.25	0.63	0.56	7
1414A4 <sup>1</sup>	4	4	4.0	—	—	—	4.75	2	3.64	5.5	1.31	4.31	4.31	1.5	3	—	—	—	3
1414C4 <sup>1</sup>	6	4	4.0	4.88	2.88	3.51	6.75	2	3.64	7.5	1.31	6.31	4.31	1.5	3	0.31	0.56	0.56	4
1414E	6	6	4.0	4.88	4.88	3.51	6.75	4	3.64	7.5	2.88	6.31	6.31	2.5	5	0.31	0.56	0.56	5
1414I	10	8	4.0	8.75	6.88	3.51	10.75	6	3.64	11.5	4.00	10.31	8.31	1.0	7	0.25	0.63	0.56	10
1414K	12	10	5.0	10.75	8.88	4.51	12.75	8	4.64	13.5	6.00	12.31	10.31	1.0	9	0.25	0.63	0.56	13
1414M6	14	12	6.0	12.75	10.88	5.51	14.75	10	5.64	15.5	8.00	14.31	12.31	1.0	11	0.25	0.63	0.56	19
1414O6	16	14	6.0	14.75	12.88	5.51	16.75	12	5.64	17.5	10.00	16.31	14.31	1.0	13	0.25	0.63	0.56	23
1414M8	14	12	8.0	12.75	10.88	7.51	14.75	10	7.64	15.5	8.00	14.31	12.31	1.0	11	0.25	0.63	0.56	20
1414O10	16	14	10.0	14.75	12.88	9.51	16.75	12	9.64	17.5	10.00	16.31	14.31	1.0	13	0.25	0.63	0.56	25

<sup>1</sup> Does not meet JIC requirements

## 1414 N4 PH Series JIC Enclosures - NEMA 12, 13, 4 Continuous Hinge, Clamped Cover

Industrial Enclosures  
Junction Boxes/JIC Enclosures



### Application

- Designed for use as instrument enclosures, electric, hydraulic or pneumatic control housings, electrical junction boxes or terminal wiring enclosures.
- Provides protection where equipment may be hosed down or otherwise be very wet, or in outdoor applications for full weather protection.

### Standards

- UL 508 Type 3R, 4, 12 and 13
- CSA Type 3R, 4, 12 and 13
- **Complies with**
  - NEMA Type 3R, 4, 12 and 13
  - JIC EGP-1-1967 unless marked<sup>1</sup>
  - IEC 529, IP66

### Construction

- Body formed from 16 or 14 gauge steel. Covers are formed from 14 gauge steel.
- Smooth, continuously welded seams without knockouts, cutouts or holes.
- Welded brackets provide for enclosure mounting.
- Continuous hinged cover is secured with stainless steel clamps and screws.
- Stainless steel continuous hinge on door may be removed by pulling the stainless steel hinge pin.
- Oil resistant gaskets are permanently secured.
- All models larger than 4" x 4" include a removable 14 gauge inner panel.
- Weldnuts are provided for mounting inner panels.
- A bonding stud is provided on the door and a grounding stud is provided in the enclosure.

### Finish

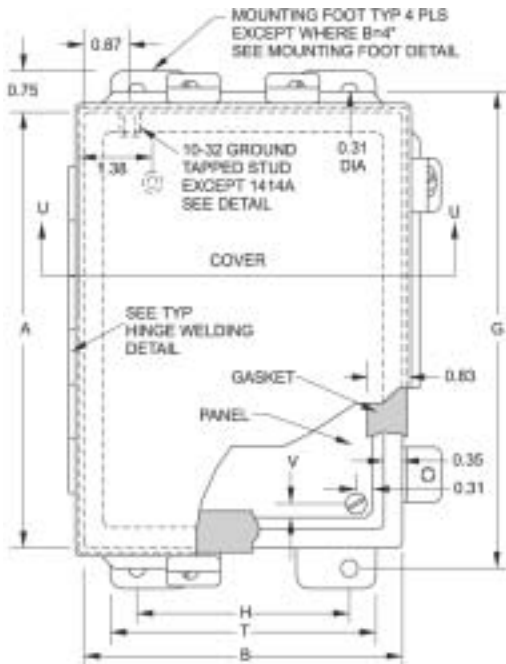
- Cover and enclosure are phosphatized, primed and finished in recoatable smooth ANSI/ASA 61 gray powder coating.
- Removable inner panel is finished in white powder coating.

### Accessories

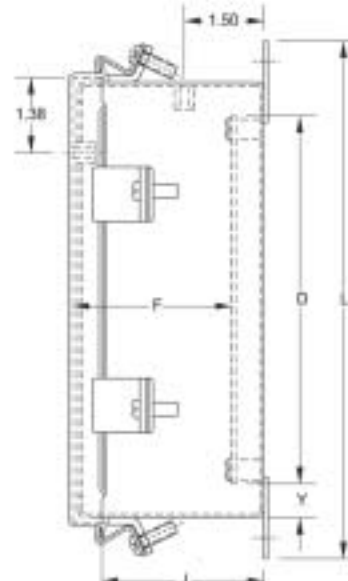
- Additional inner panels...see page [384](#)
- Breather kits...see page [374](#)
- Door clamping hardware...see page [378](#)
- Filter fans...see page [360-367](#)
- Heaters...see page [369-371](#)
- Louvered ventilating plates...see page [396](#)
- Terminal kit assemblies...see page [386](#)
- Thermostats...see page [374](#)
- Window kits...see page [391](#)

# 1414 N4 PH Series JIC Enclosures - NEMA 12, 13, 4

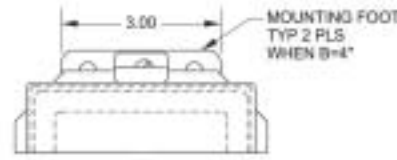
## Continuous Hinge, Clamped Cover



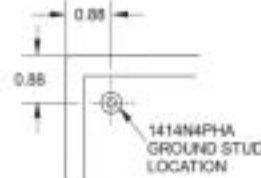
**Front View**



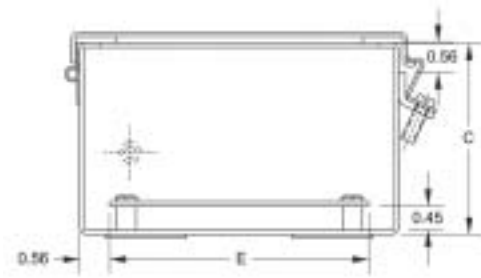
**Side View**



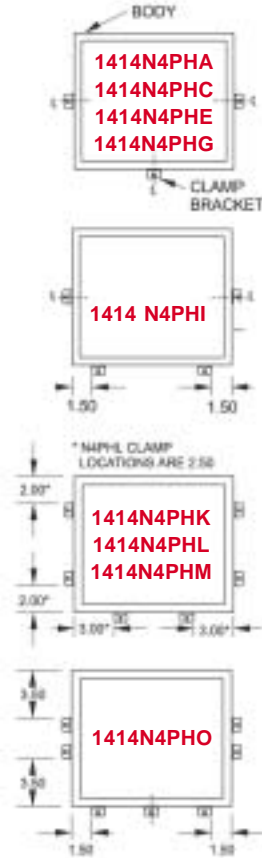
**Mounting Foot Detail  
When B=4**



**Ground stud location  
for 1414N4PHA**



**Cross Section U-U**



**Industrial Enclosures**  
Junction Boxes/JIC Enclosures

Part No.	Part No. without Inner Panel	A	B	C	Panel Dimensions		Centers					Cover Dimensions			Ship Wt. (lbs.) with panel out			
					D	E	F	G	H	J	L	T	V	Y				
—	1414N4PHA <sup>1</sup>	4	4	3.0	—	—	—	4.75	2	2.6	5.5	4.31	4.31	3	—	2	1	
1414N4PHC <sup>1</sup>	1414N4PHCLP <sup>1</sup>	6	4	3.0	4.88	2.88	2.5	6.75	2	2.6	7.5	6.31	4.31	3	.31	.56	3	2
1414N4PHG	1414N4PHGLP	8	6	3.5	6.75	4.88	3.0	8.75	4	3.1	9.5	8.31	6.31	5	.25	.63	6	5
1414N4PHE	1414N4PHELP	6	6	4.0	4.88	4.88	3.5	6.75	4	3.6	7.5	6.31	6.31	5	.31	.56	5	4
1414N4PHI	1414N4PHILP	10	8	4.0	8.75	6.88	3.5	10.75	6	3.6	11.5	10.31	8.31	7	.25	.63	10	9
1414N4PHI6	1414N4PHI6LP	10	8	6.0	8.75	6.88	5.5	10.75	6	5.6	11.5	10.31	8.31	7	.25	.63	12	11
1414N4PHK	1414N4PHKLP	12	10	5.0	10.75	8.88	4.5	12.75	8	4.6	13.5	12.31	10.31	9	.25	.63	15	14
1414N4PHL6	1414N4PHL6LP	12	12	6.0	10.75	10.88	5.5	12.75	10	5.6	13.5	12.31	12.31	11	.25	.63	25	24
1414N4PHM6	1414N4PHM6LP	14	12	6.0	12.75	10.88	5.5	14.75	10	5.6	15.5	14.31	12.31	11	.25	.63	21	20
1414N4PHO6	1414N4PHO6LP	16	14	6.0	14.75	12.88	5.5	16.75	12	5.6	17.5	16.31	14.31	13	.25	.63	26	24
1414N4PHM8	1414N4PHM8LP	14	12	8.0	12.75	10.88	7.5	14.75	10	7.6	15.5	14.31	12.31	11	.25	.63	22	20
1414N4PHO10	1414N4PHO10LP	16	14	10.0	14.75	12.88	9.5	16.75	12	9.6	17.5	16.31	14.31	13	.25	.63	28	26

<sup>1</sup> Does not meet JIC requirements

## 1414 N4 Series JIC Enclosures - NEMA 12, 13, 4 Clamped, Lift Off Cover

Industrial Enclosures  
Junction Boxes/JIC Enclosures



### Application

- Designed for use as instrument enclosures, electric, hydraulic or pneumatic control housings, electrical junction boxes or terminal wiring enclosures.
- Provides protection where equipment may be hosed down or otherwise be very wet, or in outdoor applications for full weather protection.

### Standards

- UL 508 Type 3R, 4, 12 and 13
- CSA Type 3R, 4, 12 and 13
- **Complies with**
  - NEMA Type 3R, 4, and 12
  - JIC EGP-1-1967
  - IEC 529, IP66

### Construction

- Body formed from 16 or 14 gauge steel. Covers are formed from 14 gauge steel.
- Smooth, continuously welded seams without knockouts, cutouts or holes.
- Welded brackets provide for enclosure mounting.
- Lift off cover is secured with stainless steel clamps and screws.
- Oil resistant gaskets are permanently secured.
- All models larger than 4" x 4" include a removable 14 gauge inner panel.
- Weldnuts are provided for mounting inner panels.
- A grounding stud is provided in the enclosure.

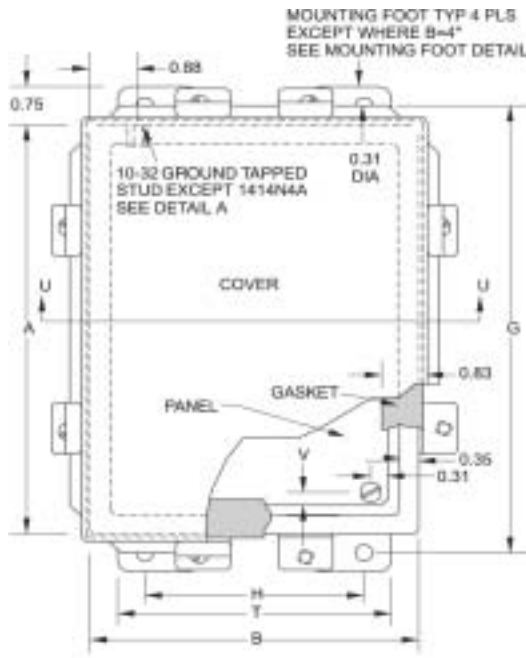
### Finish

- Cover and enclosure are phosphatized, primed and finished in recoatable smooth ANSI/ASA 61 gray powder coating.
- Removable inner panel is finished in white powder coating.

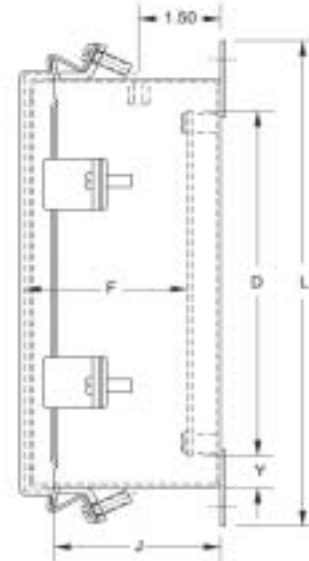
### Accessories

- Additional inner panels...see page [384](#)
- Breather kits...see page [374](#)
- Door clamping hardware...see page [378](#)
- Filter fans...see page [360-367](#)
- Heaters...see page [369-371](#)
- Louvered ventilating plates...see page [396](#)
- Terminal kit assemblies...see page [386](#)
- Thermostats...see page [374](#)
- Window kits...see page [391](#)

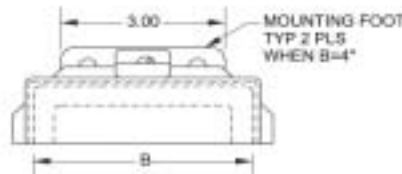
# 1414 N4 Series JIC Enclosures -NEMA 12, 13, 4 Clamped, Lift Off Cover



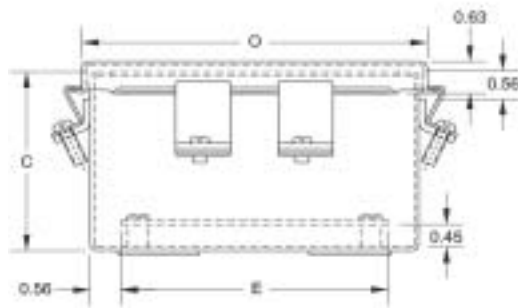
**Front View**



**Side View**



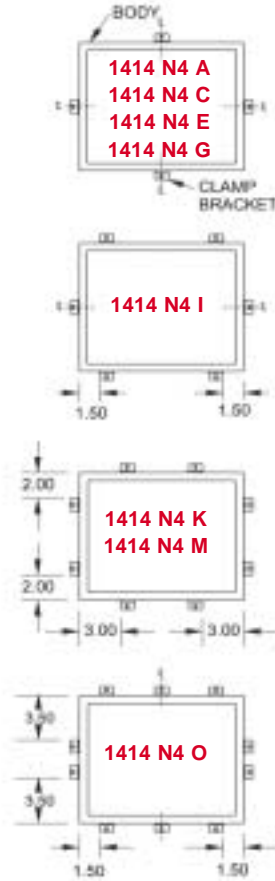
**Mounting Foot Detail  
When B=4**



**Top View**



**Ground stud location  
for 1414N4A**



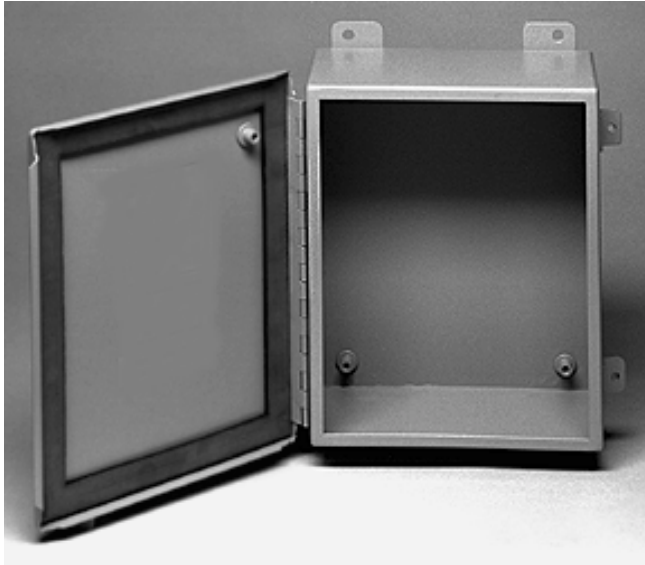
**Industrial Enclosures**  
Junction Boxes/JIC Enclosures

Part No.	Panel Dimensions						Centers				Cover Dimensions			Ship Wt. lbs.		
	A	B	C	D	E	F	G	H	J	L	T	V	Y			
1414N4A <sup>1</sup>	4	4	3.0	—	—	—	4.75	2	2.60	5.5	4.31	4.31	3	—	—	2
1414N4C	6	4	3.0	4.88	2.88	2.50	6.75	2	2.60	7.5	6.31	4.31	3	.31	.56	3
1414N4G	8	6	3.5	6.75	4.88	3.00	8.75	4	3.10	9.5	8.31	6.31	5	.25	.63	6
1414N4E	6	6	4.0	4.88	4.88	3.50	6.75	4	3.60	7.5	6.31	6.31	5	.31	.56	6
1414N4I	10	8	4.0	8.75	6.88	3.50	10.75	6	3.60	11.5	10.31	8.31	7	.25	.63	10
1414N4K	12	10	5.0	10.75	8.88	4.50	12.75	8	4.60	13.5	12.31	10.31	9	.25	.63	15
1414N4M6	14	12	6.0	12.75	10.88	5.50	14.75	10	5.60	15.5	14.31	12.31	11	.25	.63	20
1414N4O6	16	14	6.0	14.75	12.88	5.50	16.75	12	5.60	17.5	16.31	14.31	13	.25	.63	26
1414N4M8	14	12	8.0	12.75	10.88	7.50	14.75	10	7.60	15.5	14.31	12.31	11	.25	.63	22
1414N4O10	16	14	10.0	14.75	12.88	9.50	16.75	12	9.60	17.5	16.31	14.31	13	.25	.63	30

<sup>1</sup> Panel not included

## 1414 PH Series JIC Enclosures - NEMA 12, 13

### Continuous Hinge, Clamped Cover



Industrial Enclosures  
Junction Boxes/JIC Enclosures

#### Application

- Designed for use as instrument enclosures, electric, hydraulic or pneumatic control housings, electrical junction boxes or terminal wiring enclosures.
- Provides a degree of protection from falling dirt, dust, oil and water.

#### Standards

- UL 508 Type 12, 13
- CSA Type 12, 13
- **Complies with**
  - NEMA Type 12 and 13
  - JIC EGP-1-1967 unless marked<sup>1</sup>
  - IEC 529, IP65

#### Construction

- Body formed from 16 gauge or 14 gauge steel. Covers are formed from 14 gauge steel.
- Smooth, continuously welded seams without knockouts, cutouts or holes.
- Welded brackets provide for enclosure mounting.
- Continuously hinged cover is secured with stainless steel clamps and plated steel screws.
- Oil resistant gaskets are permanently secured.
- Models larger than 4" x 4" include a removable 14 gauge inner panel.
- Weldnuts are provided for mounting inner panels.
- A bonding stud is provided on the door and a grounding stud is provided in the enclosure.

#### Finish

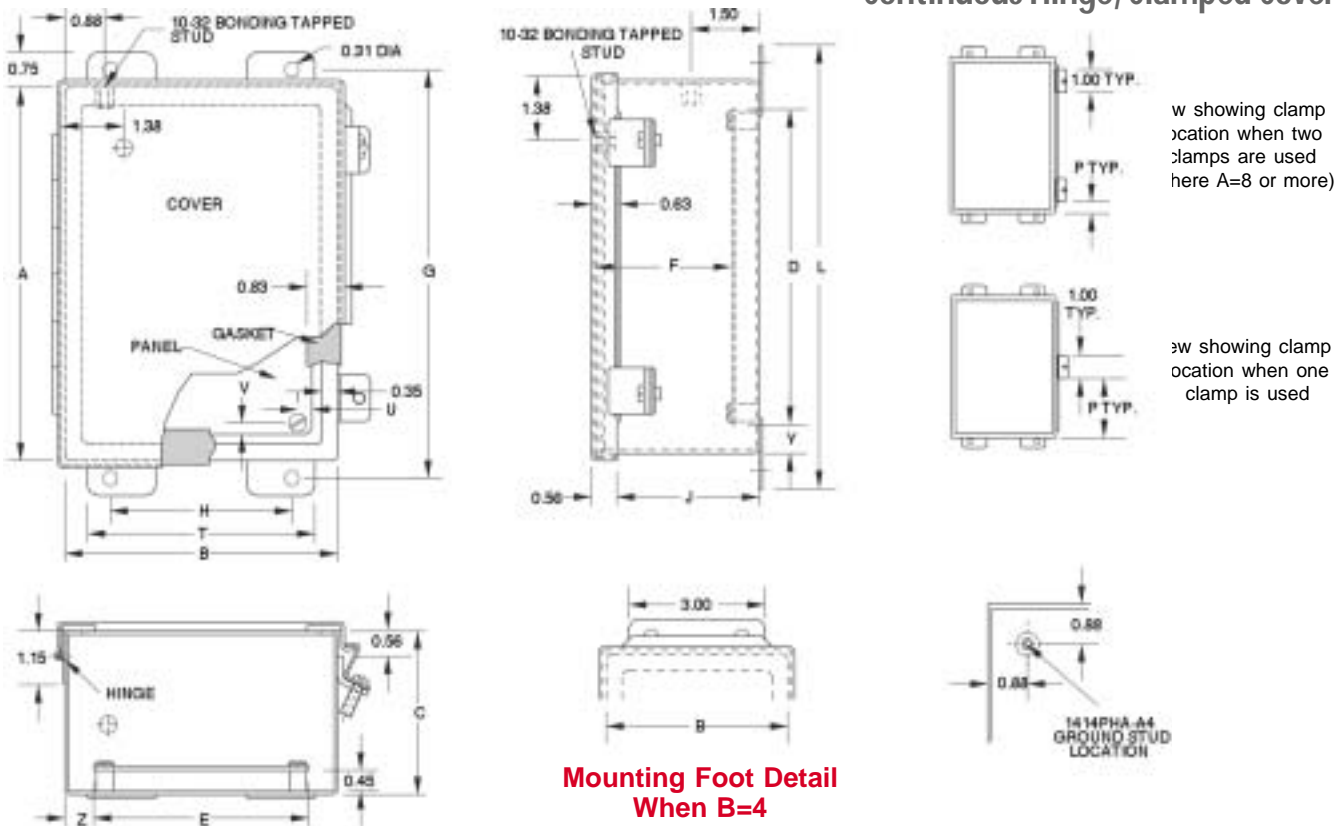
- Cover and enclosure are phosphatized and finished in ANSI/ASA 61 gray recoatable powder coating.
- Removable inner panel is finished in white powder coating.

#### Accessories

- Additional inner panels...see page [384](#)
- Breather kits...see page [374](#)
- Door clamping hardware...see page [378](#)
- Filter fans...see page [360-367](#)
- Heaters...see page [369-371](#)
- Louvered ventilating plates...see page [396](#)
- Te6
- Thermostats...see page [374](#)
- Window kits...see page [391](#)

# 1414 PH Series JIC Enclosures - NEMA 12, 13

## Continuous Hinge, Clamped Cover



Industrial Enclosures  
Junction Boxes/JIC Enclosures

Part No.	Part No. Without Inner Panel	A	B	C	Panel Size		Centers				Cover Dimensions					Ship Wt. lbs with panel	Ship Wt. lbs without panel				
Part No.	Part No. Without Inner Panel	A	B	C	D	E	F	G	H	J	L	P	T	U	V	Y	Z				
—	1414PHA <sup>1</sup>	4	4	3.0	—	—	—	4.75	2	2.64	5.5	4.31	4.31	1.5	3	—	—	—	2	2	
1414PHC <sup>1</sup>	1414PHCLP <sup>1</sup>	6	4	3.0	4.88	2.88	2.51	6.75	2	2.64	7.5	6.31	4.31	2.5	3	.31	.31	.56	.56	3	2
1414PHG	1414PHGLP	8	6	3.5	6.75	4.88	3.01	8.75	4	3.14	9.5	8.31	6.31	1.0	5	.31	.25	.63	.56	6	5
1414PHRG	1414PHRGLP	6	8	3.5	4.88	6.75	3.01	6.75	6	3.14	7.5	6.31	8.31	2.5	7	.25	.31	.56	.63	6	5
—	1414PHA4 <sup>1</sup>	4	4	4.0	—	—	—	4.75	2	3.64	5.5	4.31	4.31	1.5	3	—	—	—	—	3	3
1414PHC4 <sup>1</sup>	1414PHC4LP <sup>1</sup>	6	4	4.0	4.88	2.88	3.51	6.75	2	3.64	7.5	6.31	4.31	2.5	3	.31	.31	.56	.56	4	3
1414PHE	1414HELP	6	6	4.0	4.88	4.88	3.51	6.75	4	3.64	7.5	6.31	6.31	2.5	5	.31	.31	.56	.56	5	4
1414PHH4	1414PHH4LP	8	8	4.0	6.75	6.88	3.51	8.75	6	3.64	9.5	8.31	8.31	1.0	7	.31	.25	.63	.56	8	7
1414PHI	1414PHILP	10	8	4.0	8.75	6.88	3.51	10.75	6	3.64	11.5	10.31	8.31	1.0	7	.31	.25	.63	.56	10	8
1414PHRI	1414PHRILP	8	10	4.0	6.88	8.75	3.51	8.75	8	3.64	9.5	8.31	10.31	1.0	9	.25	.31	.56	.63	10	8
1414PHKC4	1414PHKC4LP	12	6	4.0	10.75	4.88	3.51	12.75	4	3.64	13.5	12.31	6.31	1.0	5	.31	.25	.63	.56	10	8
1414PHK	1414PHKLP	12	10	5.0	10.75	8.88	4.51	12.75	8	4.64	13.5	12.31	10.31	1.0	9	.31	.25	.63	.56	13	10
1414PHRK	1414PHRKLP	10	12	5.0	8.88	10.75	4.51	10.75	10	4.64	11.5	10.31	12.31	1.0	11	.25	.31	.56	.63	13	12
1414PHG6	1414PHG6LP	8	6	6.0	6.75	4.88	5.51	8.75	4	5.64	9.5	8.31	6.31	1.0	5	.31	.25	.63	.56	8	7
1414PHI6	1414PHI6LP	10	8	6.0	8.75	6.88	5.51	10.75	6	5.64	11.5	10.31	8.31	1.0	7	.31	.25	.63	.56	12	10
1414PHJ6	1414PHJ6LP	10	10	6.0	8.75	8.88	5.51	10.75	8	5.64	11.5	10.31	10.31	1.0	9	.31	.25	.63	.56	14	12
1414PHL6	1414PHL6LP	12	12	6.0	10.75	10.88	5.51	12.75	10	5.64	13.5	12.31	12.31	1.0	11	.31	.25	.63	.56	17	15
1414PHMH6	1414PHMH6LP	14	8	6.0	12.75	6.88	5.51	14.75	6	5.64	15.5	14.31	8.31	1.0	7	.31	.25	.63	.56	12	10
1414PHM6	1414PHM6LP	14	12	6.0	12.75	10.88	5.51	14.75	10	5.64	15.5	14.31	12.31	1.0	11	.31	.25	.63	.56	19	17
1414PHRM6	1414PHRM6LP	12	14	6.0	10.88	12.75	5.51	12.75	12	5.64	13.5	12.31	14.31	1.0	13	.25	.31	.56	.63	19	17
1414PHN6	1414PHN6LP	16	10	6.0	14.75	8.88	5.51	16.75	8	5.64	17.5	16.31	10.31	1.0	9	.31	.25	.63	.56	18	15
1414PHO6	1414PHO6LP	16	14	6.0	14.75	12.88	5.51	16.75	12	5.64	17.5	16.31	14.31	1.0	13	.31	.25	.63	.56	23	21
1414PHRO6	1414PHRO6LP	14	16	6.0	12.88	14.75	5.51	14.75	14	5.64	15.5	14.31	16.31	1.0	15	.25	.31	.56	.63	23	21
1414PHK8	1414PHK8LP	12	10	8.0	10.75	8.88	7.51	12.75	8	7.64	13.5	12.31	10.31	1.0	9	.31	.25	.63	.56	18	15
1414PHM8	1414PHM8LP	14	12	8.0	12.75	10.88	7.51	14.75	10	7.64	15.5	14.31	12.31	1.0	11	.31	.25	.63	.56	20	18
1414PHO8	1414PHO8LP	16	14	8.0	14.75	12.88	7.51	16.75	12	7.64	17.5	16.31	14.31	1.0	13	.31	.25	.63	.56	25	22
1414PHO10	1414PHO10LP	16	14	10.0	14.75	12.88	9.51	16.75	12	9.64	17.5	16.31	14.31	1.0	13	.31	.25	.63	.56	26	23

<sup>1</sup> Does not meet JIC requirements.

## 1414 SC Series JIC Enclosures - NEMA 12, 13

Lift Off, Screw Cover

Industrial Enclosures  
Junction Boxes/JIC Enclosures



### Application

- Designed for use as instrument enclosures, electric, hydraulic or pneumatic control housings, electrical junction boxes or terminal wiring enclosures.
- Provides a degree of protection from falling dirt, dust, oil and water.

### Standards

- UL 508 Type 12 and 13
- CSA Type 12 and 13
- **Complies with**
  - NEMA Type 12 and 13
  - JIC EGP-1-1967 unless marked<sup>1</sup>
  - IEC 529, IP65

### Construction

- Body formed from 16 gauge or 14 gauge steel. Covers are formed from 14 gauge steel.
- Smooth, continuously welded seams without knockouts, cutouts or holes.
- Welded brackets provide for enclosure mounting.
- Cover is secured with captive, plated steel screws, threaded into sealed wells.
- Oil resistant gaskets are permanently secured.
- Models larger than 4" x 4" include a removable 14 gauge inner panel.
- Weldnuts are provided for mounting inner panels.
- A grounding stud is provided in the enclosure.

### Finish

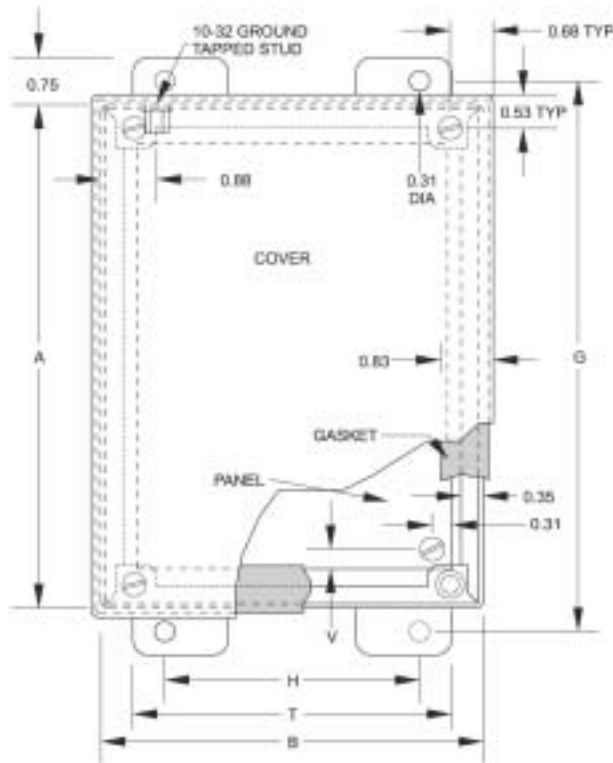
- Cover and enclosure are phosphatized and finished in ANSI/ASA 61 gray recoatable powder coating.
- Removable inner panel is finished in white powder coating.

### Accessories

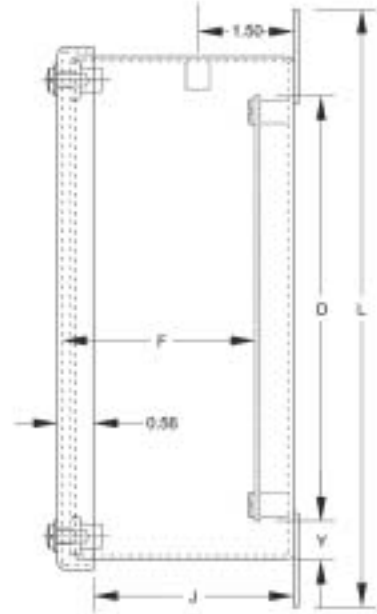
- Additional inner panels...see page [384](#)
- Breather kits...see page [374](#)
- Filter fans...see page [360-367](#)
- Heaters...see page [369-371](#)
- Louvered ventilating plates...see page [396](#)
- Terminal kit assemblies...see page [386](#)
- Thermostats...see page [374](#)
- Window kits...see page [391](#)

# 1414 SC Series JIC Enclosures - NEMA 12, 13

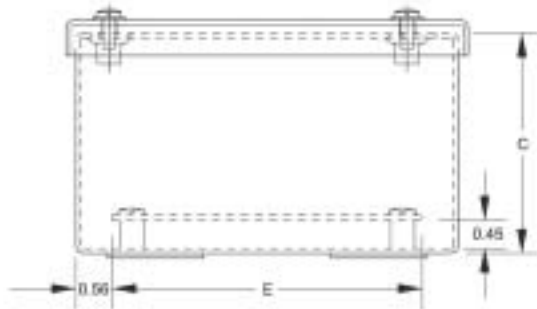
Lift Off, Screw Cover



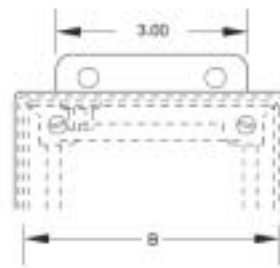
**Front View**



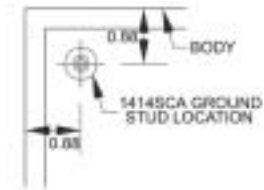
**Side View**



**Top View**



**Mounting Detail  
When B=4**



Part No.	Panel Size			Centers				Cover Dimensions				V	Y	Ship Wt.lbs.		
	A	B	C	D	E	F	G	H	J	L	T					
1414SCA <sup>1</sup>	4	4	3.0	—	—	—	4.75	2	2.64	5.5	3	4.31	4.31	—	—	2
1414SCC <sup>1</sup>	6	4	3.0	4.87	2.87	2.51	6.75	2	2.64	7.5	3	6.31	4.31	0.31	0.56	3
1414SCG	8	6	3.5	6.75	4.87	3.01	8.75	4	3.14	9.5	5	8.31	6.31	0.25	0.63	6
1414SCE	6	6	4.0	4.87	4.87	3.51	6.75	4	3.64	7.5	5	6.31	6.31	0.31	0.56	5
1414SCI	10	8	4.0	8.75	6.87	3.51	10.75	6	3.64	11.5	7	10.31	8.31	0.25	0.63	10
1414SCK	12	10	5.0	10.75	8.87	4.51	12.75	8	4.64	13.5	9	12.31	10.31	0.25	0.63	14
1414SCM6	14	12	6.0	12.75	10.87	5.51	14.75	10	5.64	15.5	11	14.31	12.31	0.25	0.63	19
1414SCO6	16	14	6.0	14.75	12.87	5.51	16.75	12	5.64	17.5	13	16.31	14.31	0.25	0.63	24
1414SCM8	14	12	8.0	12.75	10.87	7.51	14.75	10	7.64	15.5	11	14.31	12.31	0.25	0.63	22
1414SCO10	16	14	10.0	14.75	12.87	9.51	16.75	12	9.64	17.5	13	16.31	14.31	0.25	0.63	29

<sup>1</sup> Does not meet JIC requirements

**Industrial Enclosures**  
Junction Boxes/JIC Enclosures