

Eclipse Command System - NEMA 12

Command Enclosure

Operator Interface Enclosure



Note: Shown with optional red handle

Panel
Sold
Separately



Application

- Designed to enclose electronic controls, instruments and components in indoor environments where dirt, dust, oil and water may be present.
- Ideal for use with suspension systems.
- Multiple mounting provisions and full front mounting space provide for ideal operator interface.
- Smooth flush surfaces and attractive finishes compliment high tech equipment.

Standards

- UL 508 type 12
- CSA type 12
- **Complies with**
 - NEMA Type 12 and 13
 - IEC 60529 IP54

Construction

- Formed from 16 gauge steel.
- Smooth, continuously welded seams ground smooth.
- Door stiffeners are designed to also permit additional mounting options.
- Formed lip on enclosure to exclude flowing liquids and contaminants.
- Reversible rear door is secured with slotted quarter turn fasteners.
- Door frames have zinc die-cast corners with extrusion pressed aluminum profiles.
- Door front panels are 3mm aluminum.
- Oil resistant gaskets are permanently secured.
- Bonding stud provided on door and grounding stud installed in enclosure.
- Quarter turn latches formed from mild steel.
- Formed steel hinge with stainless steel hinge pins.
- Fastening is recommended with optional Tara Plus or 50/80 suspension systems
...see page **286-297**
- Optional red handle easily mounts horizontally to bottom of enclosure front frame. Order separately
...see page **285**
- Heavy duty re-inforcing plate included.

Finish

- Finished in RAL 7040 gray powder coating.
- Door panel is natural aluminum.

Accessories

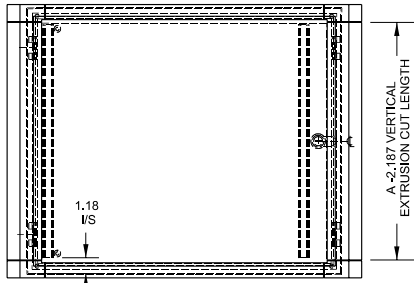
- Tara Plus suspension system...see page **286-291**
- 50 mm heavy duty suspension system...see page **286-297**
- 80 mm heavy duty suspension system...see page **286-297**
- Inner panels...see page **285**

Suspension System

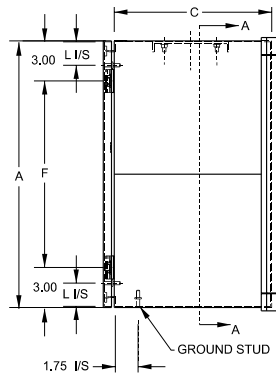
Eclipse Command System - NEMA 12

Command Enclosure

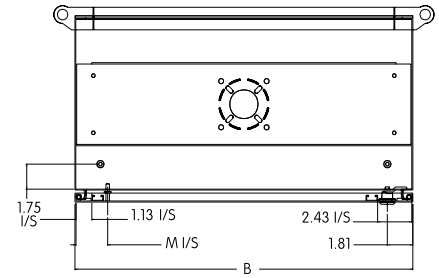
Operator Interface Enclosure



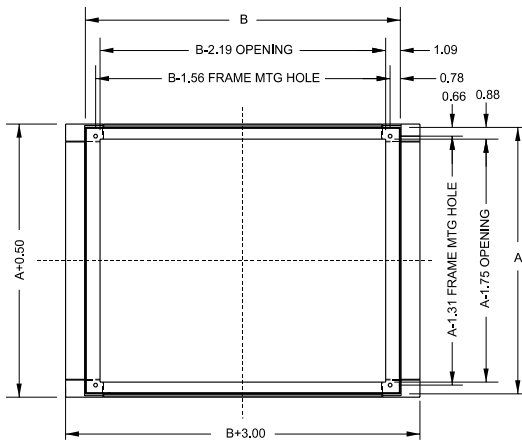
Front View



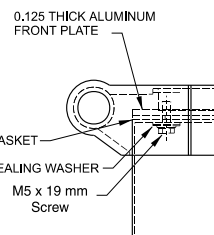
Side View - Hinge Side



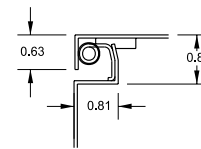
End View Section



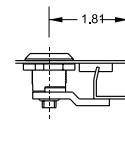
Section A-A



Corner Detail
Typ. 4 Places



Cross Section of 16 Gauge Body and Door

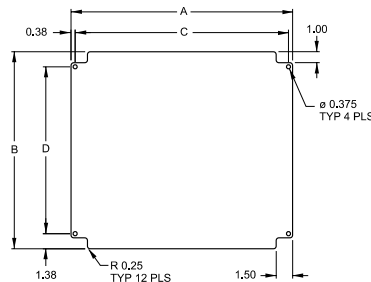


Lock Section

| Part No. | Overall Dimensions | | | | | | Optional Handle Part No. | Optional Panel Part No. | Ship Wt. lbs. |
|-----------|--------------------|----|----|------|------|------|--------------------------|-------------------------|---------------|
| | A | B | C | F | L | M | | | |
| ECP12126 | 12 | 12 | 6 | 6.0 | 1.50 | 2.25 | ECPH12 | ECPP1212 | 17 |
| ECP12168 | 12 | 16 | 8 | 6.0 | 1.50 | 2.25 | ECPH16 | ECPP1216 | 21 |
| ECP161610 | 16 | 16 | 10 | 10.0 | 1.50 | 2.25 | ECPH16 | ECPP1616 | 29 |
| ECP162010 | 16 | 20 | 10 | 10.0 | 1.50 | 2.25 | ECPH20 | ECPP1620 | 32 |
| ECP20246 | 20 | 24 | 6 | 14.0 | 1.50 | 2.25 | ECPH24 | ECPP2024 | 34 |
| ECP202412 | 20 | 24 | 12 | 14.0 | 1.50 | 2.25 | ECPH24 | ECPP2024 | 43 |

Optional Inner Panel

- Panel mounts on the rear door of command enclosures.
- Unfinished aluminum is 0.08" thick.



| Part No. | A | B | C | D |
|----------|-------|-------|-------|-------|
| ECPP1212 | 8.25 | 10.00 | 7.50 | 7.25 |
| ECPP1216 | 12.25 | 10.00 | 11.50 | 7.25 |
| ECPP1616 | 12.25 | 14.00 | 11.50 | 11.25 |
| ECPP1620 | 16.25 | 14.00 | 15.50 | 11.25 |
| ECPP2024 | 20.25 | 18.00 | 19.50 | 15.25 |

Optional Handle

- Easily mounts horizontally to bottom of enclosure front frame.
- Finished in red.



| Part No. | Fits Enclosure |
|----------|---------------------|
| ECPH12 | ECP12126 |
| ECPH16 | ECP12168, ECP161610 |
| ECPH20 | ECP1620 |
| ECPH24 | ECP202412, ECP20246 |

Suspension System