

Eclipse Series - NEMA 4, 12

Accessories

Industrial Enclosures
Wallmount Enclosures



Eclipse Inner Panel

- Larger than standard NEMA panel used in same sized enclosure.
- 12 or 14 gauge steel construction (see chart below).
- Larger sizes have 2 or 4 formed flanges for added strength.
- Slotted corner design for easier mounting.
- Finished in white or unpainted galvanized.

Mild Steel Part No.	Galvanized Part No.	Size		
		D	E	Gauge
EP1212	EPG1212	10.2	10.2	14
EP1612	EPG1612	14.2	10.2	14
EP1616	EPG1616	14.2	14.2	12
EP1620	EPG1620	14.2	18.2	12
EP2016	EPG2016	18.2	14.2	12
EP2020	EPG2020	18.2	18.2	12
EP2024	EPG2024	18.2	22.2	12
EP2416	EPG2416	22.2	14.2	12
EP2420	EPG2420	22.2	18.2	12
EP2424	EPG2424	22.2	22.2	12
EP2430	EPG2430	22.2	28.2	12
EP2442	EPG2442	22.2	40.2	12
EP3020	EPG3020	28.2	18.2	12

Mild Steel Part No.	Galvanized Part No.	Size		
		D	E	Gauge
EP3024	EPG3024	28.2	22.2	12
EP3030	EPG3030	28.2	28.2	12
EP3048	EPG3048	28.2	46.2	12
EP3060	EPG3060	28.2	58.2	12
EP3624	EPG3624	34.2	22.2	12
EP3630	EPG3630	34.2	28.2	12
EP3636	EPG3636	34.2	34.2	12
EP3648	EPG3648	34.2	46.2	12
EP3660	EPG3660	34.2	58.2	12
EP4236	EPG4236	40.2	34.2	12
EP4824	EPG4824	46.2	22.2	12
EP4836	EPG4836	46.2	34.2	12
EP6036	EPG6036	58.2	34.2	12

For sizing, refer to master selection table...see page 38



Eclipse Swing Panel

- Hinged panel allows access to internally mounted equipment.
- 12 gauge steel construction.
- Slotted quarter turn latches provide closure.
- Adding optional locking quarter turn latches (Part Number **EQTRL**...see page 36) convert this to a dead front panel.
- Complete with 4-6" depth adjustment channels.
- Hardware kit maintains UL, CSA and NEMA ratings when field installed.
- Finished in white.



Part No.	Fits Enclosure Size (A x B)
ESP1212	12 x 12
ESP1612	16 x 12
ESP1616	16 x 16
ESP2016	20 x 16
ESP2416	24 x 16
ESP1620	16 x 20
ESP2020	20 x 20
ESP2420	24 x 20
ESP3020	30 x 20
ESP2024	20 x 24
ESP2424	24 x 24
ESP3024	30 x 24
ESP3624	36 x 24
ESP3030	30 x 30
ESP3630	36 x 30
ESP3636	36 x 36

For sizing, refer to master selection table...see page 38



Eclipse Replacement Hinge Pins

- These are supplied with enclosure but offered here as replacements should originals be misplaced.
- Packaged in quantities of 5.

Part No.	Material
EPINS	Zinc plated steel hinge pin
EPINSS	Stainless steel hinge pin

Eclipse Series - NEMA 4, 12 Accessories

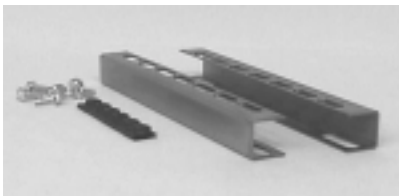


Eclipse Swing Frame

- Provides 19" rack mounting with full EIA spacing (punched holes).
- Hinges allow easy equipment access.
- Slotted quarter turn latches provide closure.
- Adding optional locking quarter turn latches (**EQTRL**...see page 36) provides added security.
- Complete with 4-6" depth adjustment channels.
- Order package of 25 clip nuts separately (Part No. **1421N25**...see page 387).
- Hardware kit maintains UL, CSA and NEMA ratings when field installed.
- Finished in black.

Part No.	Fits Enclosure Size (A x B)	Rack Spacing Width	Rack Spacing Height (Units)
ESF2424	24 x 24	19	11
ESF3024	30 x 24	19	14
ESF3624	36 x 24	19	17

For sizing, refer to master selection table...see page 38

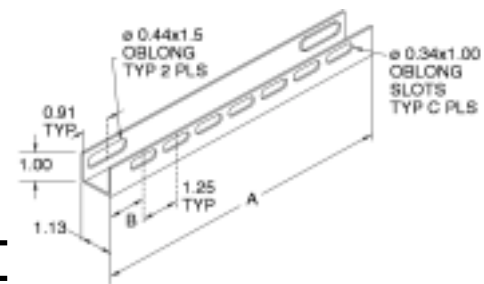


DIN Rail Mounting Kit

- Field installable.
- Mounts directly to panel collar studs (panel not required).
- Accepts optional DIN rails, see below.
- DIN rails available separately.
- Zinc plated, yellow dichromate.

Part No.	A	B	C
2DMK12	10	1.25	7
2DMK16	14	0.75	11
2DMK20	18	0.88	14
2DMK24	22	1.00	17
2DMK30	28	0.88	22

For sizing, refer to master selection table...see page 38

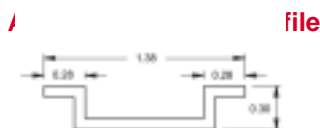
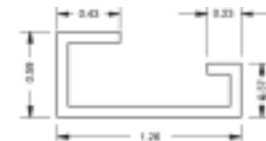


DIN Rails

- Field installable.
- Includes a set of 3 plated rails.
- Available in 3 industry standard profiles - DIN 1, DIN 3, and CENELEC.
- DIN rail mounting kit required for installation (see above).
- Rails have a 0.28 x 1.25 oblong slot on each end.
- Zinc plated, yellow dichromate.

Asymmetric Din 1 Profile Part No.	Symmetric Din 3 Profile Part No.	Cenelec Profile Part No.	Length
2D1K12	2D2K12	2DCK12	9.25
2D1K16	2D2K16	2DCK16	13.25
2D1K20	2D2K20	2DCK20	17.25
2D1K24	2D2K24	2DCK24	21.25
2D1K30	2D2K30	2DCK30	27.25

For sizing, refer to master selection table...see page 38



CENELEC Profile

Eclipse Series- NEMA 4, 12

Accessories



Quarter Turn Inserts and Keys

- Field installable inserts replace standard quarter turn slot.
- Available in 7mm square and triangle formats, as well as slotted.
- Square and triangle inserts provide extra security since standard screw drivers cannot open.
- Keys sold separately from inserts.
- Maintains NEMA, UL and CSA 12, 4 and 4X ratings.

Part No.	Description
2SQI7	7mm square insert, black
2SQK7	7mm square key, fits 2SQI7
2TRI7	7mm triangle insert, black
2TRK7	7mm triangle key, fits 2TRI7
2SLI	Slotted insert, black



Replacement Quarter Turn Assemblies

- Field installable.
- Interchangeable with standard quarter turn latches.
- Maintains NEMA, UL and CSA ratings as noted.

Part No.	Description	Material	NEMA Rating
EQTRL¹	Locking Qtr Turn	Zinc Die/Chrome	n/a (internal use only)
2QTR	Slotted Qtr Turn	Zinc Die/Black	12, 4
2SSQTR	Slotted Qtr Turn	Stainless steel	12, 4, 4X
2WKL	Wing knob lock	Zinc Die/Black	12, 4
2QPPL	Padlockable quarter turn latch	Zinc Die/Black	12, 4

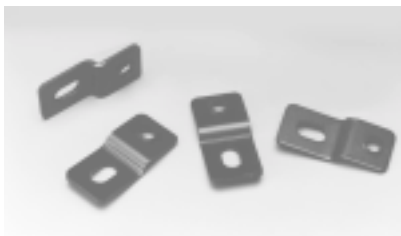
¹ For use with Swing Frame/Panel. ...see page 35. All others for use with enclosures.



Handles

- Field installable.
- Interchangeable with standard quarter turn latches.
- Maintain NEMA, UL and CSA ratings as noted.

Part No.	Description	Material	NEMA Rating
EHTL	Locking T Handle	Zinc Die/Black	12, 4
EHLL	Locking L Handle	Zinc Die/Black	12, 4
EHLPL	Padlockable L Handle	Zinc Die/Black	12
EHLPLSS	Padlockable L Handle	Stainless Steel	12, 4, 4X
EHLNLSS	Non Locking L Handle	Stainless Steel	12, 4, 4X



Eclipse Mounting Foot Kit

- Maintains UL, CSA and NEMA ratings.
- Field installable.
- Pilot sits squarely into enclosure mounting holes for horizontal or vertical positioning.
- Available in plated black and stainless steel.
- Packaged in quantities of four.

Part No.	Material
EZPMF	Mild Steel
ESSMF	Type 304 Stainless
ES16MF	Type 316 Stainless

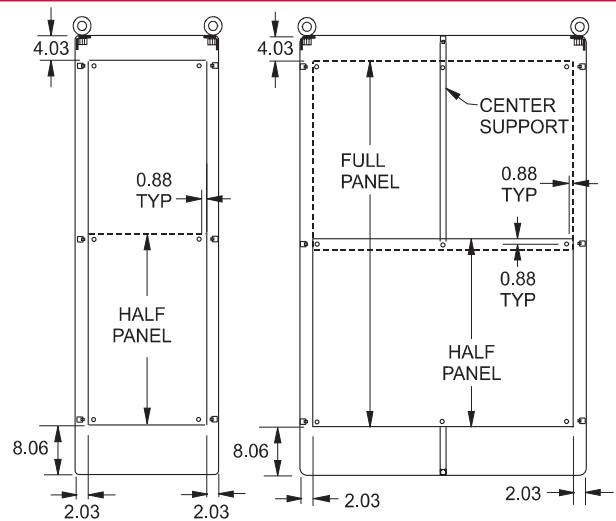


1418 Series Freestanding Enclosures - NEMA 4, 12

Accessories

Inner Panels

- Formed from 10 gauge or 12 gauge steel.
- All double door width panels are 10 gauge steel.
- Width panels are available in full or half height.
- Depth panels are available in full height only.
- Depth and width panels are provided with all mounting hardware and center support where required.
- Half panel can be mounted in the top or bottom half of the enclosure.
- Finished in white.



**Front View
Single Door**

**Front View
Double Door**

Depth Panels

Side Mounted Panels for Single and Double Door Enclosures

Part No.	Encl. Height	Panel Width	Panel Height
60FD14	60	14	48
72FD9	72	9	60
72FD14	72	14	60
72FD20	72	20	60
72FD26	72	26	60
90FD9	90	9	78
90FD14	90	14	78
90FD20	90	20	78
90FD26	90	26	78

Double Door Width Panels

Part No.	Description	Enclosure	Panel Size
60AWFW	Full Panel	60 x 48	48.00 x 44
60AWHW	Half Panel		24.88 x 44
72ZFW	Full Panel	72 x 48	60.00 x 44
72ZHW	Half Panel		30.88 x 44
72ZFW	Full Panel	72 x 60	60.00 x 56
72ZHW	Half Panel		30.88 x 56
72ZFW	Full Panel	72 x 72	60.00 x 68
72ZHW	Half Panel		30.88 x 68
90BFW	Full Panel	90 x 48	78.00 x 44
90BHW	Half Panel		39.88 x 44
90BFW	Full Panel	90 x 72	78.00 x 68
90BHW	Half Panel		39.88 x 68

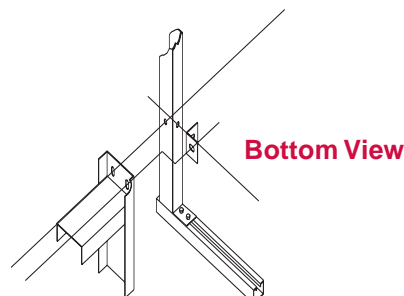
Single Door Width Panels

Part No.	Description	Enclosure	Panel Size
60TFW	Full Panel	60 x 24	48.00 x 20
60TWH	Half Panel		24.87 x 20
72TFW	Full Panel	72 x 24	60.00 x 20
72TWH	Half Panel		30.87 x 20
90TFW	Full Panel	90 x 24	78.00 x 20
90TWH	Half Panel		39.87 x 20
72XFW	Full Panel	72 x 30	60.00 x 26
72XHW	Half Panel		30.87 x 26
60TYFW	Full Panel	60 x 36	48.00 x 32
60TYHW	Half Panel		24.87 x 32
72TYFW	Full Panel	72 x 36	60.00 x 32
72TYHW	Half Panel		30.87 x 32
90TYFW	Full Panel	90 x 36	78.00 x 32
90TYHW	Half Panel		39.87 x 32

1418 CS Series Center Panel Supports

- Adapts panels, swing frames, and panel rails from single door enclosures so they can be used on double door enclosures.
- Suitable for single or dual access double door enclosures.
- Center panel support mounts into front to back mounting channels (top and bottom) found in two door enclosures.
- Allows a combination of two 20" panels in a 48" wide enclosure, two 26" panels in a 60" wide enclosure, or two 32" panels in a 72" wide enclosure.
- Width is adjustable from 1.91" to 2.34".
- Support may be positioned at any depth within the enclosure.
- Finished in white.

Part No.	Enclosure Ht.
1418ACS	60
1418ZCS	72
1418BCS	90



Bottom View

1418 Series Freestanding Enclosures - NEMA 4, 12

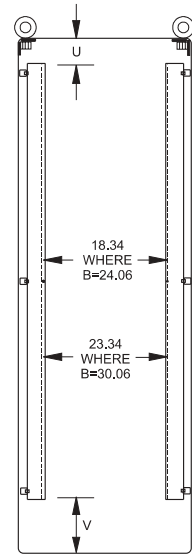
Accessories

Panel Rails

- Provides 19" or 24" mounting capability.
- Sold in **pairs**.
- Formed from 10 gauge steel.
- Drilled and tapped 10-32 to EIA spacing of 0.5" - 0.63" - 0.63" - 0.5".
- Finished in white.

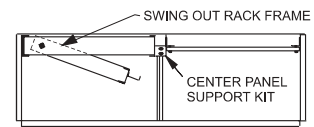
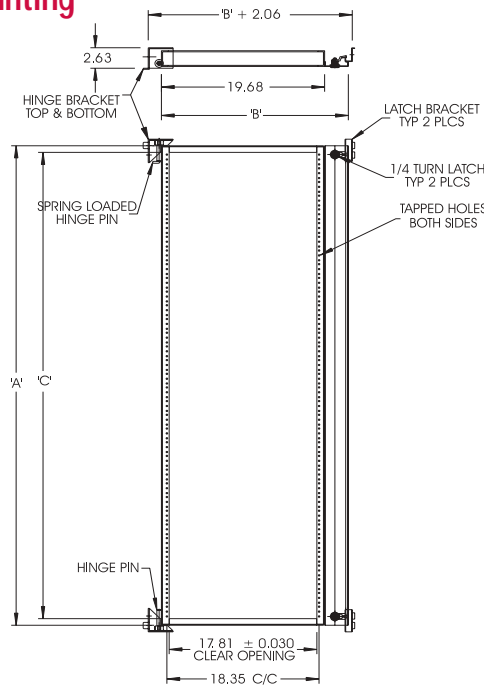


Part No.	Panel Description	Angle Enclosure	Width	Panel Height	U	V
1418TFHP	Full Height	60 x 24	19	49.00	3.78	7.78
1418THHP	Half Height			26.25	3.59	7.59
1418WFHP	Full Height	72 x 24	19	61.25	3.66	7.66
1418WHHP	Half Height			31.50	3.97	7.67
1418XFHP	Full Height	72 x 30	24	61.25	3.66	7.66
1418XHHP	Half Height			31.50	3.97	7.67
1418YFHP	Full Height	90 x 24	19	78.75	3.91	7.91
1418YHHP	Half Height			40.25	4.09	8.09



Swing Out Frames For 19" Rack Mounting

- Formed from 10 gauge steel, frames are drilled and tapped to EIA requirements for mounting standard 19" rack accessories.
- Designed for installation in 72" and 90" high enclosures. The swing frame pivots on 0.5" pins within the enclosure for easy access to the rear of rack mounted equipment.
- The frame positions at any depth within the enclosure and is fastened in the closed position with quarter turn fasteners.
- Swing frames may be mounted in 30" and 36" wide enclosures, or in 60" and 72" wide enclosures with an optional center panel support...see page 64.
- One or two frames may be mounted in 30" and 36" wide enclosures with dual access, and 1,2,3 or 4 frames may be mounted in 60" and 72" wide dual access enclosures.
- Finished in black.



Section View from Top of Cabinet

Part No.	A	B	C	D	E	Enclosure Height	Width Single Door	Width Double Door	Center Support
1418SFYY	87.86	33.72	4.28	78.5	75.31	90	36	72	1418 BCS
1418SFY	69.86	33.72	4.28	60.5	57.81	72	36	72	1418 ZCS
1418SFX	69.86	27.72	4.28	60.5	57.81	72	30	60	1418 ZCS

Note: When using a swing out frame on a double door enclosure, a Center Panel Support must also be used and ordered separately...see previous page.

Industrial Enclosures
Freestanding Enclosures

Series 2000 - NEMA 4 Accessories

Series 2000 Inner Panel

- 12 gauge steel.
- Larger panels have two or four formed flanges.
- Some larger panels are 10 gauge.
- Hardware to mount inner panels is included with Series 2000 enclosures.
- Finished in white.

Part No.	Height	Width
18P0909	9	9
18P1309	13	9
18P1313	13	13
18P1713	17	13
18P1717	17	17
18P2113	21	13
18P2117	21	17
18P2121	21	21
18P2717	27	17

Part No.	Height	Width
18P2721	27	21
18P2727	27	27
18P3321	33	21
18P3327	33	27
18P3933	39	33
18P4521	45	21
18P4533	45	33

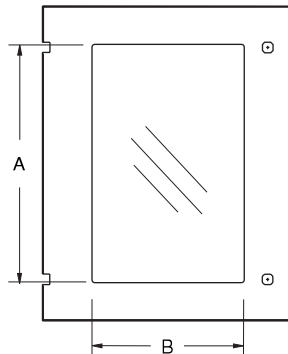
For sizing, refer to master selection table...see page 46.

Industrial Enclosures
Wallmount Enclosures



Window Door

- Lexan window doors are field installable
- Maintains NEMA rating.
- Use mounting hardware supplied with standard door to install window door.



Type 4

Part No.	A	B
2PW1212	5.25	5.25
2PW1612	9.25	5.25
2PW1616	9.25	9.25
2PW1620	9.25	13.25
2PW2016	13.25	9.25
2PW2020	13.25	13.25
2PW2024	12.75	16.75
2PW2416	16.75	8.75
2PW2420	16.75	12.75
2PW2424	16.75	16.75
2PW3020	22.75	12.75
2PW3024	22.25	16.25
2PW3030	22.25	22.25
2PW3624	28.25	16.25
2PW3630	28.25	22.25
2PW4236	34.25	28.25
2PW4824	40.25	16.25
2PW4836	40.25	28.25

For sizing, refer to master selection table...see page 46.



Depth Extension Ring Kit

- Formed 14 gauge steel.
- Adds 8 inches to enclosure depth.
- Maintains NEMA rating (silicone seal is required to maintain rating - not supplied).
- Type 4 finished in gray.

Type 4

Part No.	A	B
2PX2024	20	24
2PX2424	24	24
2PX3024	30	24
2PX3624	36	24
2PX3630	36	30

For sizing, refer to master selection table...see page 46.

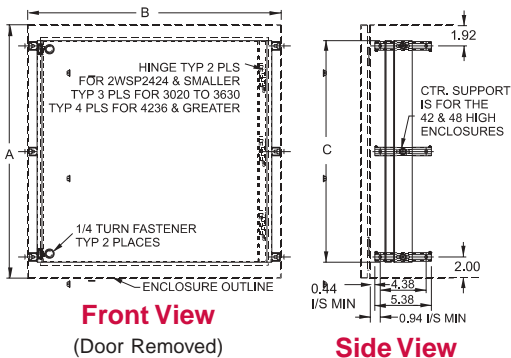
Series 2000 - NEMA 4 Accessories

Industrial Enclosures
Wallmount Enclosures

Swing Panel

- Hinged panel allows access to internally mounted equipment.
- Slotted quarter turn latches provide closure.
- 12 gauge steel construction.
- Adding optional locking quarter turn latches (Part Number **EQTRL**...see page 45) convert this to a dead front panel.
- Complete with 4-6" depth adjustment channels.
- Hardware kit maintains UL, CSA and NEMA ratings when field installed.
- Finished in white.

Part No.	A	B	C	D
2WSP1212	12	12	9	9.29
2WSP1612	16	12	13	9.29
2WSP1616	16	16	13	13.29
2WSP1620	16	20	13	17.29
2WSP2016	20	16	17	13.29
2WSP2020	20	20	17	17.29
2WSP2024	20	24	17	21.29
2WSP2416	24	16	21	13.29
2WSP2420	24	20	21	17.29
2WSP2424	24	24	21	21.29
2WSP3020	30	20	27	17.29
2WSP3024	30	24	27	21.29
2WSP3030	30	30	27	27.29
2WSP3624	36	24	33	21.29
2WSP3630	36	30	33	27.29
2WSP4236	42	36	39	33.29
2WSP4824	48	24	45	21.29
2WSP4836	48	36	45	33.29



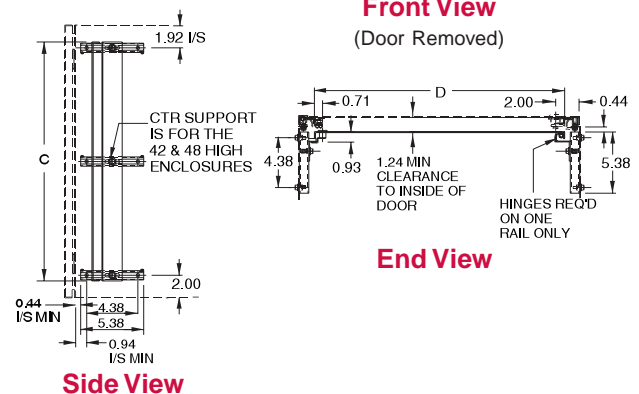
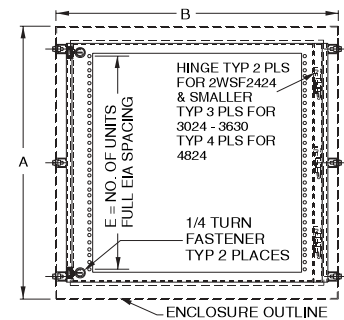
For sizing, refer to master selection table...see page 46.

Swing Frame

- Provides 19" or 24" rack mounting with full EIA spacing (punched holes).
- Hinges allow easy equipment access.
- Slotted quarter turn latches provide closure.
- Adding optional locking quarter turn latches (**EQTRL**...see page 45) provides added security.
- Complete with 4-6" depth adjustment channels.
- Order package of 25 clip nuts separately (Part No. **1421N25**...see page 381).
- Hardware kit maintains UL, CSA and NEMA ratings when field installed.
- Finished in black.

Part No.	A	B	C	D	E	Rack Mt.
2WSF2024	20	24	17	21.29	9	19"
2WSF2424	24	24	21	21.29	11	19"
2WSF3024	30	24	27	21.29	15	19"
2WSF3030	30	30	27	27.29	15	24"
2WSF3624	36	24	33	21.29	17	19"
2WSF3630	36	30	33	27.29	17	24"
2WSF4824	48	24	45	21.29	25	19"

For sizing, refer to master selection table...see page 46.



Series 2000- NEMA 4

Accessories

Industrial Enclosures
Wallmount Enclosures

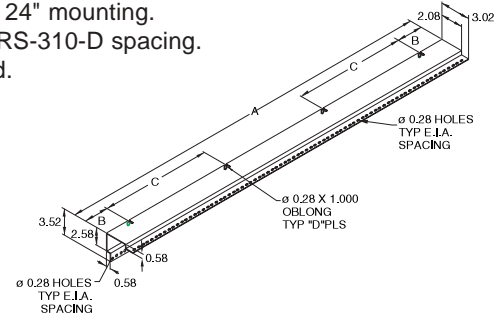


Fixed Rack Mounting Kit

- Formed 14 gauge steel.
- Reversible angles provide for mounting of 19" or 24" rack equipment.
- 24" overall width enclosure allows 19" mounting, 30" overall width enclosure allows 19 or 24" mounting.
- 0.28" diameter holes with standard RS-310-D spacing.
- Field installable - no drilling required.
- Finished in black.

Part No.	A	B	C	D
2FR20	17.50	3.00	—	2
2FR24	21.00	2.75	—	2
2FR30	28.00	3.25	—	3
2FR36	33.25	2.88	—	3
2FR48	45.50	3.00	13.67	4

Part No. reflects overall height of enclosure.

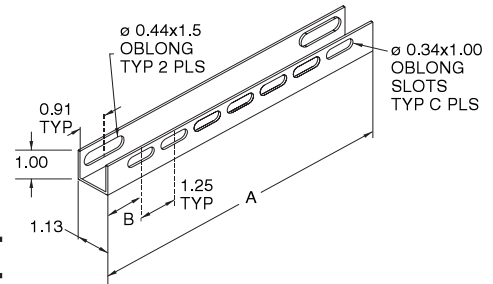


DIN Rail Mounting Kit

- Field installable.
- Mounts directly to panel collar studs (panel not required).
- Accepts optional DIN rails (see below).
- DIN rails available separately.
- Finished in black.

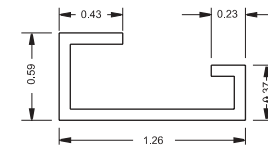
Part No.	A	B	C
2DMK12	10	1.25	7
2DMK16	14	0.75	11
2DMK20	18	0.88	14
2DMK24	22	1.00	17
2DMK30	28	0.88	22

For sizing, refer to master selection table...see page 46.

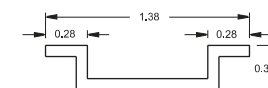


DIN Rails

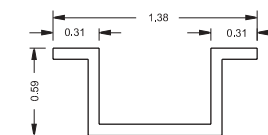
- Field installable.
- Includes a set of 3 plated rails.
- Available in 3 industry standard profiles - DIN 1, DIN 3, and CENELEC.
- DIN rail mounting kit required for installation (see above).
- Rails have a 0.28 x 1.25 oblong slot on each end.
- Finished in black.



Asymmetric DIN 1 Profile



Symmetric DIN 3 Profile



CENELEC Profile

Asymmetric Din 1 Profile Part No.	Symmetric Din 3 Profile Part No.	Cenelec Profile Part No.	Length
2D1K12	2D2K12	2DCK12	9.25
2D1K16	2D2K16	2DCK16	13.25
2D1K20	2D2K20	2DCK20	17.25
2D1K24	2D2K24	2DCK24	21.25
2D1K30	2D2K30	2DCK30	27.25

For sizing, refer to master selection table...see page 46.



Quarter Turn Inserts and Keys

- Field installable inserts replace standard slot.
- Available in 7mm square and triangle formats, as well as slotted.
- Square and triangle inserts provide extra security since standard screw drivers cannot open.
- Keys sold separately from inserts.
- Maintains NEMA, UL and CSA 12, 4 and 4X ratings.

Part No.	Description
2SQI7	7mm square insert, black
2SQK7	7mm square key, fits 2SQI7
2TRI7	7mm triangle insert, black
2TRK7	7mm triangle key, fits 2TRI7
2SLI	Slotted insert, black



Replacement Quarter Turn Assemblies

- Field installable.
- Interchangeable with standard quarter turn latches.
- Maintains NEMA, UL and CSA ratings as noted.

Part No.	Description	Material	NEMA Rating
EQTRL¹	Locking Qtr Turn	Zinc Die/Chrome	n/a (internal use only)
2QTR	Slotted Qtr Turn	Zinc Die/Black	12, 4
2SSQTR	Slotted Qtr Turn	Stainless steel	12, 4, 4X
2WKL	Wing knob lock	Zinc Die/Black	12, 4
2QPL	Padlockable quarter turn latch	Zinc Die/Black	12, 4

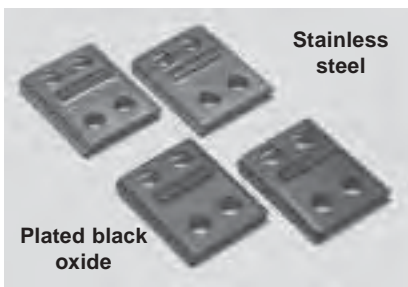
¹ For use with Swing Frame/Panel. ..see page 43. All others for use with enclosures.



Handles

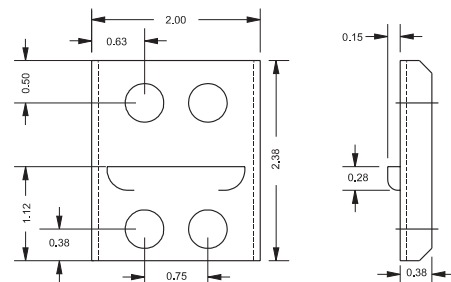
- Field installable.
- Interchangeable with standard quarter turn latches.
- Maintain NEMA, UL and CSA ratings as noted.

Part No.	Description	Material	NEMA Rating
EHTL	Locking T Handle	Zinc Die/Black	12, 4
EHLL	Locking L Handle	Zinc Die/Black	12, 4
EHLPL	Padlockable L Handle	Zinc Die/Chrome	12
EHLPLSS	Padlockable L Handle	Stainless Steel	12, 4, 4X
EHLNLSS	Non Locking L Handle	Stainless Steel	12, 4, 4X



Series 2000 Mounting Foot Kit

- Field installable.
- Available in plated black oxide and stainless steel.
- Packaged in quantities of four.
- Maintains NEMA, UL and CSA Type rating as shown.



Part No.	Material	For Nema Rating
2ZPMF	Steel black oxide	NEMA 12,13
2SSMF	Stainless steel	NEMA 3R, 4, 4X, 12, 13