

Accessories

Encoder mounting attachments



Fig.	Example of use	Use	Order code:	Pitch circle diameter	Suitable for encoders	Page
		For applications with high axial play	8.0010.4K00.0000 Long spring element	cylindrical pin 110 mm	A020, A02H 9080, 9081	262
		For applications with reduced mounting space	8.0010.4J00.0000 Short spring element	cylindrical pin 76 mm	A020, 9080, 9081	262
		For applications with axial and radial play with low dynamics for constant rotary movements	8.0010.4G00.0000 Tether square	A02X: 65 mm 9080: 60 mm 9081: 60 mm 1 screw	A020, A02H, 9080, 9081	262
		For applications with fastening points located on variable pitch circle diameters	8.0010.4E00.0000 Tether arm large	104 mm – 206 mm 1 screw	A020, A02H, 9080, 9081	263
		For applications with axial play	8.0010.4T00.0000 Tether arm short	149 mm 1 screw	A020, A02H, 9080, 9081	263
		For applications with axial and radial play, and high dynamics	8.0010.40V0.0000 Stator coupling	119 mm 2 screws	A020, A02H	264
		For applications with low axial and radial play, flexible in use	Tether arm Length = 70 mm 8.0010.40S0.0000 Length = 100 mm 8.0010.40T0.0000 Length = 150 mm 8.0010.40U0.0000	Flexible 262 ... 422 mm 1 screw	A020, A02H, 9080, 9081	263

Accessories

Encoder mounting attachments



Fig.	Example of use	Use	Order code:	Pitch circle diameter	Suitable for encoders	Page
		For applications with axial play and low dynamics	8.0010.4I00.0000 Spring element	3620: 60 mm 3720: 63 mm 5020: 44 mm 58XX: 65 mm Cylindric pin	3620,3720, 5020,582X, 587X,588X	264
		For standard applications with axial and radial play, and high dynamics	8.0010.1602.0000	65 mm	5020, 582X, 587X, 588X	265
		For standard applications with axial and radial play, and high dynamics	8.0010.1602.0000	65 mm	582X, 587X, 588X	265
		For applications with axial and radial play, and high dynamics	8.0010.4R00.0000 Flexible fastening arm	80 mm – 170 mm 1 screw	5020,582X, 587X,588X	266
		For applications with axial and radial play, and high dynamics	8.0010.40L0.0000 Stator coupling	65 mm 3 screws	5020,582X, 587X,588X	266
		For applications with axial and radial play, for constant rotary movements	8.0010.40E0.0000 Flexible fastening arm	65 mm – 91,5 mm 1 screw	5020,582X, 587X,588X	266
		For applications with axial and radial play, for constant rotary movements	8.0010.40E0.0000 Flexible fastening arm	65 mm – 91,5 mm 1 screw	5020,582X, 587X,588X	267
		For applications with axial and radial play, and high dynamics	8.0010.4C00.0000 Double-winged stator coupling	46 mm 2 screws	3720, 3620	267
		For applications with limited axial play and low dynamics, and reduced mounting space	8.0010.4H00.0000 Spring element	3620: 42 mm 3720: 40 mm 5020: 58XX: 42 mm Cylindric pin	3620, 3720, 5020,582X, 587X,588X	267

Accessories

Encoder mounting attachments



Mounting attachments

Mounting kit for large hollow shaft encoders

These attachments allow a wide range of mounting variants.

Suitable for the A02X and 908X encoders

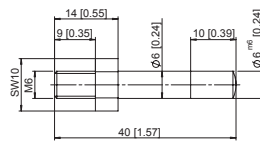
Supplied as a comprehensive set: Order code 8.0010.4A00.0000

The kit includes the following individual elements, which may also be ordered separately.

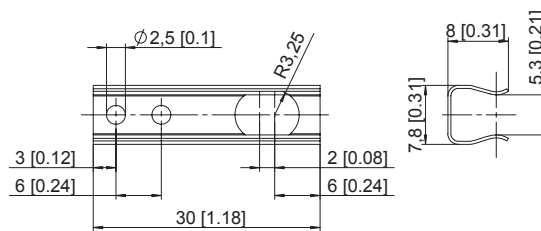
1 x long cylindrical pin with fastening thread
Order code 8.0010.4700.0003

1 x long spring element
Order code 8.0010.4K00.0000
(The set includes the screws)

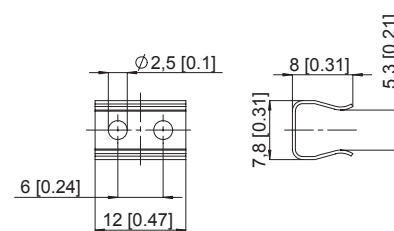
1 x short spring element
Order code 8.0010.4J00.0000



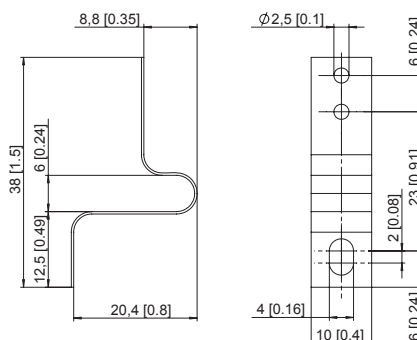
1 x long spring element
Order code 8.0010.4K00.0000



1 x short spring element
Order code 8.0010.4J00.0000



Tether square
Order code 8.0010.4G00.0000



Accessories

Encoder mounting attachments

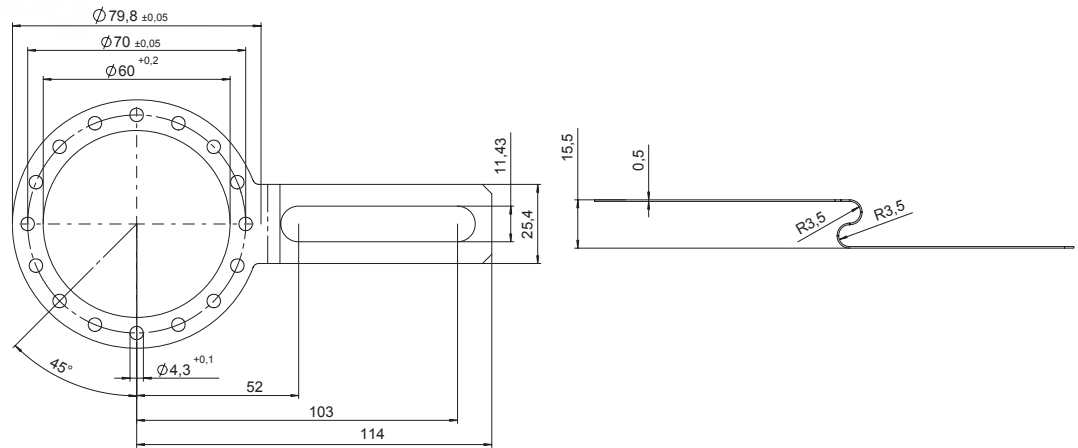


Tether arm large

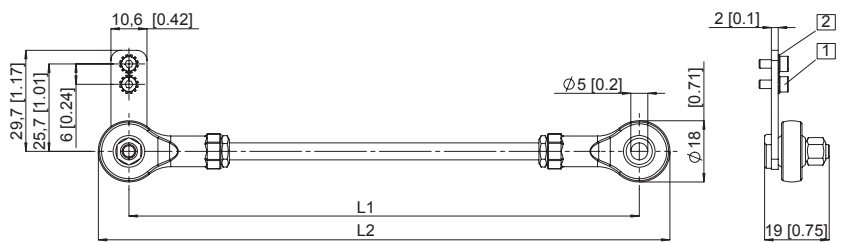


- For encoder types A020 and 908X
- Prevents radial play of the encoder
- The necessary axial play remains unchanged
- Material:
 - Mounting flange: stainless steel
 - Screws: steel, galvanized

Delivery includes:
 – Flexed spring device
 – 3 screws
Order code: 8.0010.4E00.0000



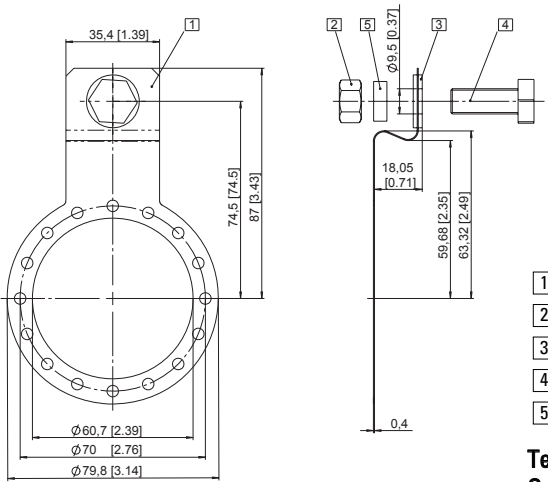
Tether arm large, flexible



Tether arm			
Length L	L1	L2	Order code
70 mm	70 [2.76]	88 [3.46]	8.0010.40S0.0000
100 mm	100 [3.94]	118 [4.65]	8.0010.40T0.0000
150 mm	150 [5.91]	168 [6.61]	8.0010.40U0.0000

- 1 Socket cap screw M2.6x6
- 2 Lock washer

Tether arm short



- 1 Curved spring element
- 2 Hexagonal nut 3/8 - 16 UNC
- 3 Washer (isolating)
- 4 Hexagonal screw 3/8 16 UNC x 1"
- 5 Washer D10,4 x 15 x 15

Tether arm short
Order code: 8.0010.4T00.0000

Accessories

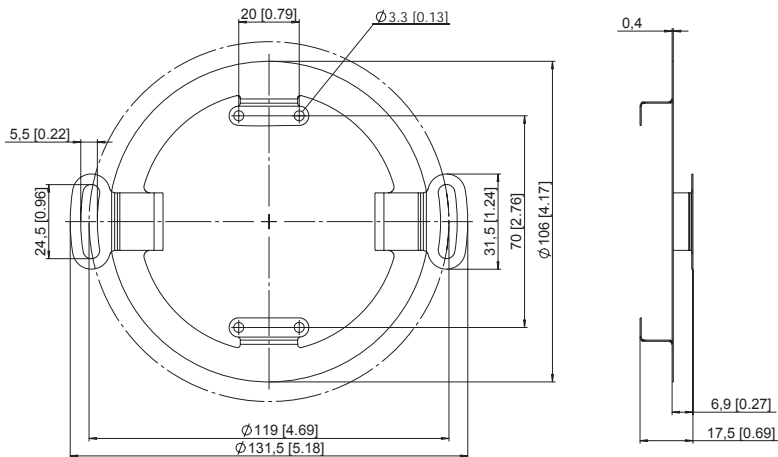
Encoder mounting attachments



Stator coupling



Stator coupling
Order code: **8.0010.40V0.0000**



Mounting set for hollow shaft encoders 58 mm



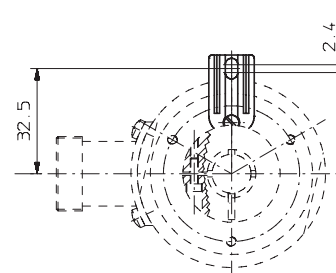
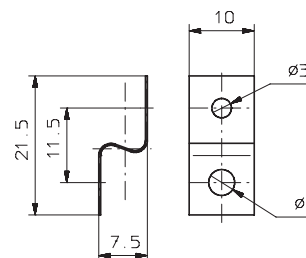
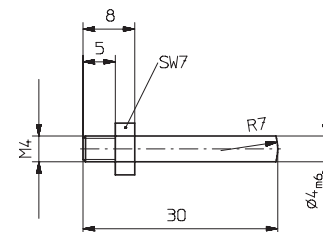
Various mounting variants can be supplied

Delivery includes:
1 x cylindrical pin with thread
Order code 8.0010.4700.0000

1 x mounting flange
Order code T.035.009
incl. screw M3x5
Order code N.630.305

1 x long torque support slot
Order code 8.0010.4100.0000

Complete set:
Order code 8.0010.4600.0000



Accessories

Encoder mounting attachments

Mounting attachments

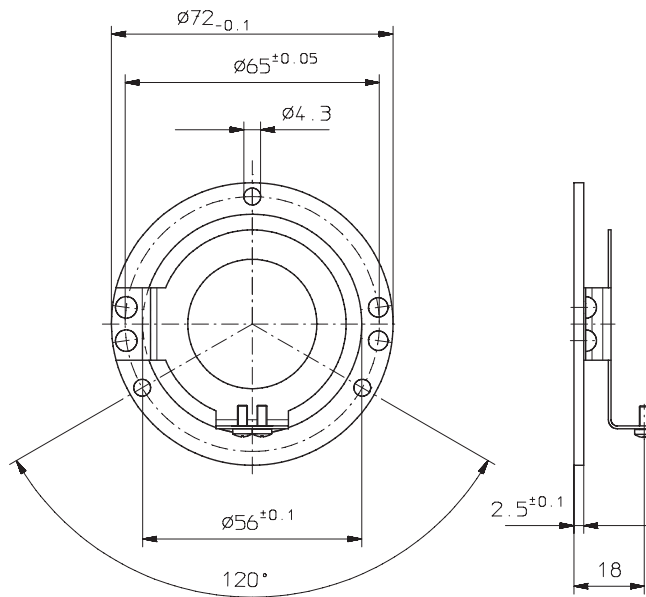


- Stator coupling for hollow shaft encoders
- Mounting kit for hollow shaft encoder

Stator coupling for hollow shaft encoders:

For hollow shaft encoders type series 582X, 587X, 588X, 7030 or 7031

Delivered as a kit with 2 fixing screws
Order code 8.0010.1602.0000



Double-winged stator coupling

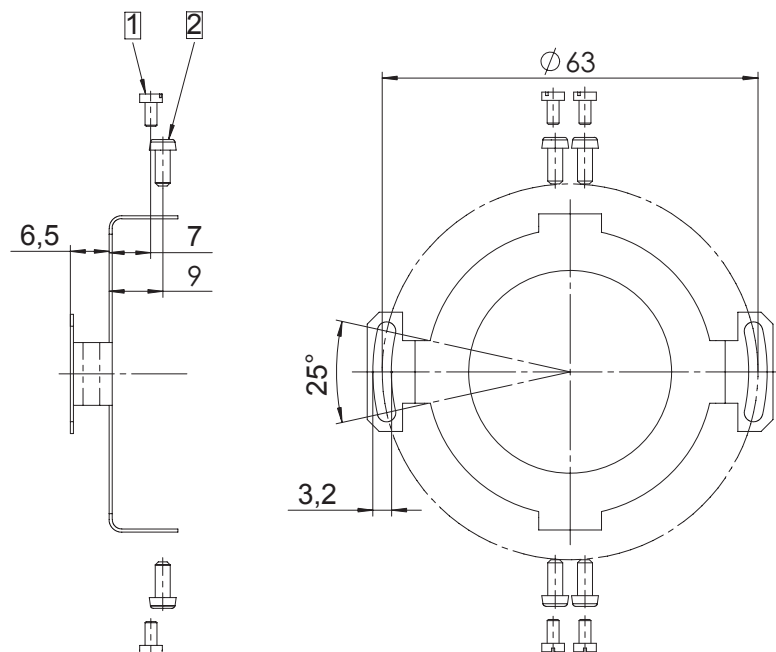
- For increased torsional strength
- For increased dynamic loads

Kit for hollow shaft encoders type 58XX comprising:

- 1 x stator coupling, double-winged
- 2 x 2 screws

Complete kit:

Order code 8.0010.4D00.0000



- 1 Fixing screw for 5882
- 2 Fixing screw for 582X, 587X

Accessories

Encoder mounting attachments

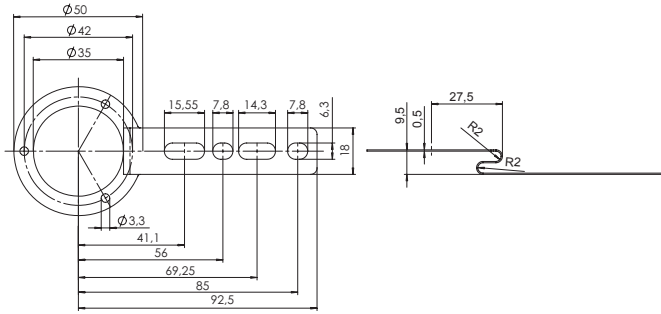


Mounting attachments



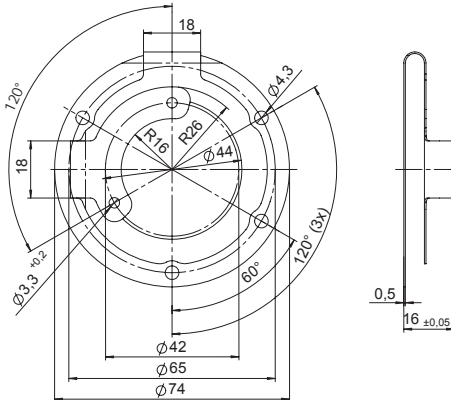
8.0010.4R00.0000
Flexible fastening arm

Suitable for:
5020,582X,
587X,588X



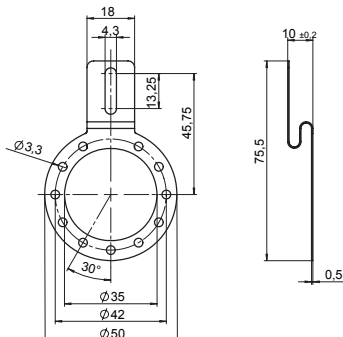
8.0010.40L0.0000
Stator coupling (The kit includes the screws)

Suitable for:
5020,582X,
587X,588X



8.0010.40E0.0000
Flexible fastening arm

Suitable for:
5020,582X,
587X,588X



Accessories

Encoder mounting attachments

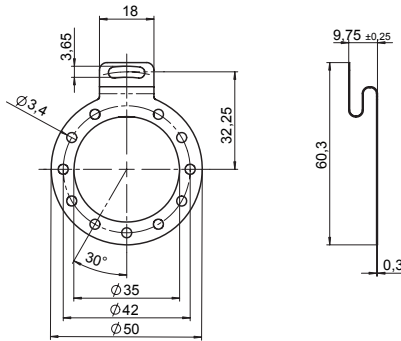


Mounting attachments



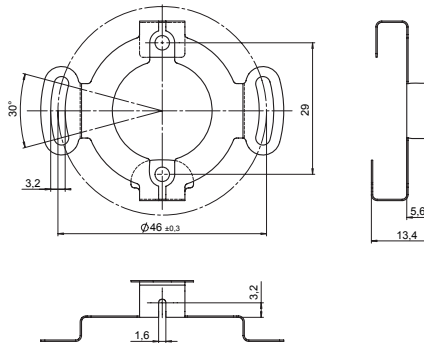
8.0010.40M0.0000
Flexible fastening arm

Suitable for:
5020,582X,
587X,588X



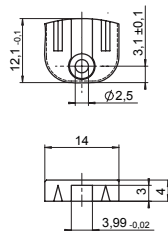
8.0010.4C00.0000
Double-winged stator coupling

Suitable for:
3720, 3620



8.0010.4H00.0000
Spring element

Suitable for:
3620, 3720,
5020,582X,
587X,588X



Accessories

Encoder mounting attachments



Flanges



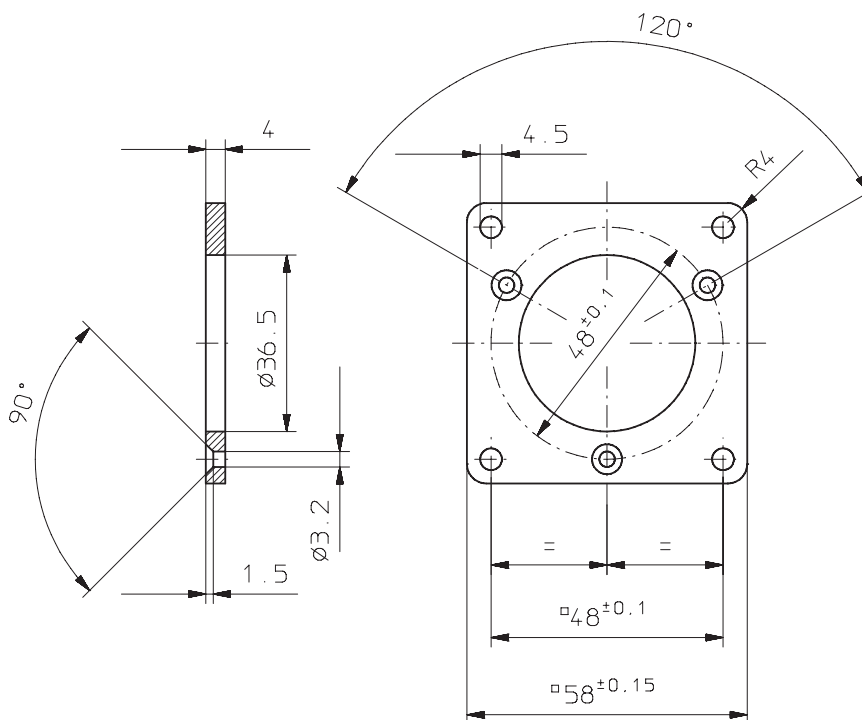
- Suitable for shaft encoders with clamping flange
- Mounting screws included
- Material aluminium

Square flange:

Suitable for shaft encoders type series 580X and 5000 with clamping flange

Order code
8.0010.2100.0000 (Kit)

Includes flange and screws for encoder mounting.

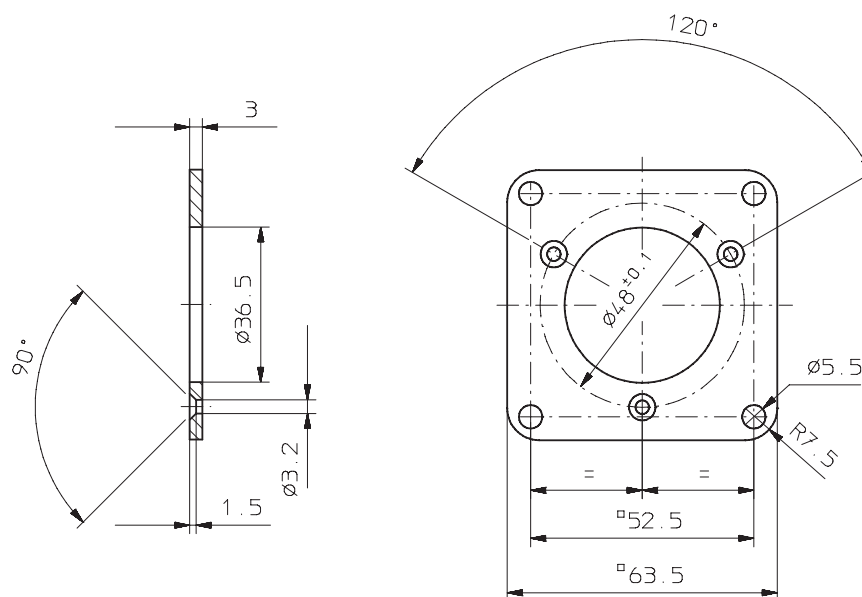


Square flange:

Suitable for shaft encoders type series 580X and 5000 with clamping flange

Order code
8.0010.2120.0000 (Kit)

Includes flange and screws for encoder mounting.



Accessories

Encoder mounting attachments



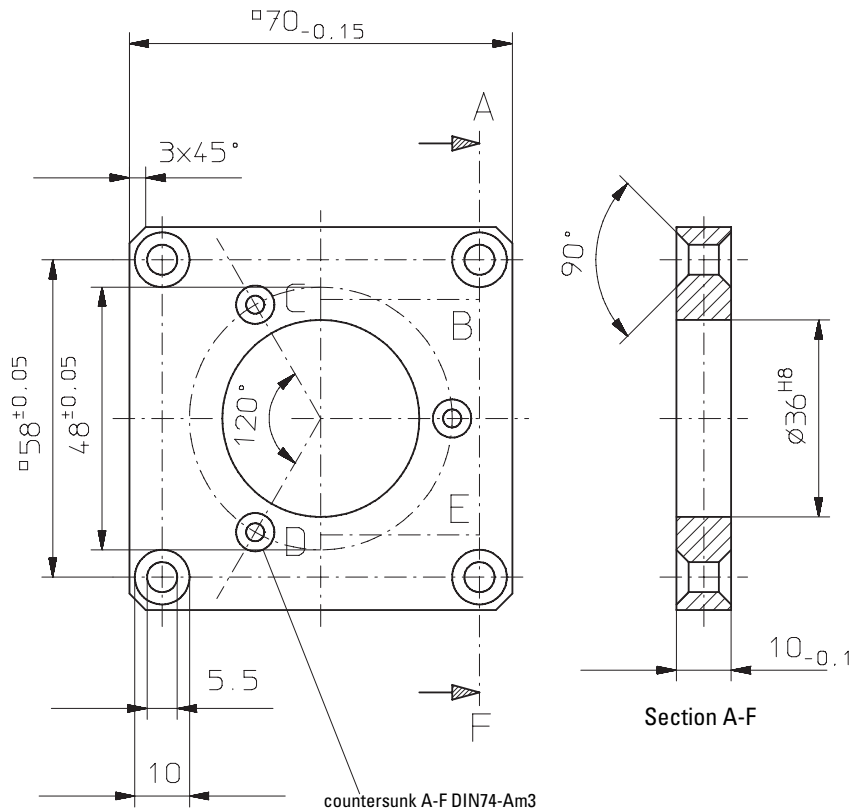
Flanges

Square flange:

Suitable for shaft encoders type series 580X and 5000 with clamping flange
Material: aluminium

Order code
8.0010.2600.0000 (Kit)

Includes flange and screws for encoder mounting.

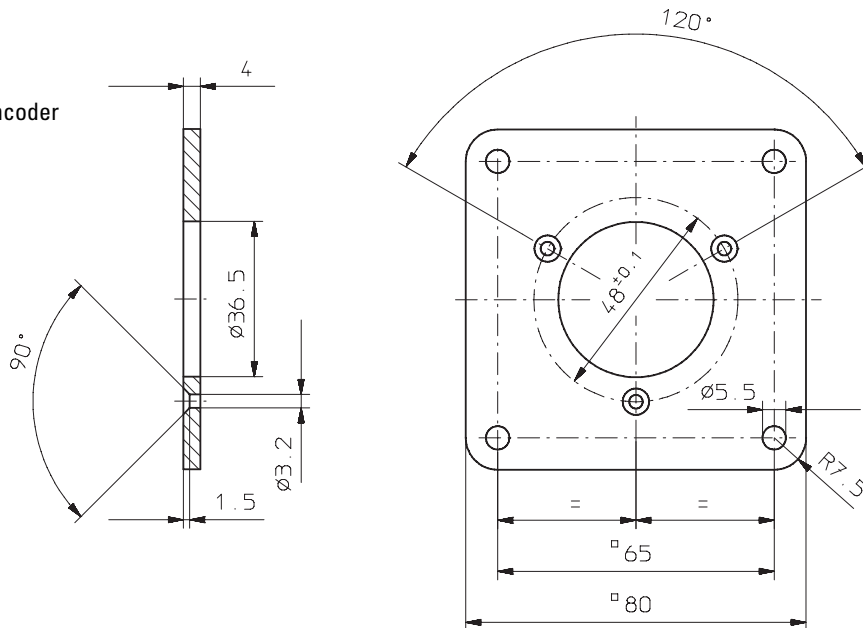


Square flange:

Suitable for encoders type series 580X and 5000 with clamping flange

Order code
8.0010.2800.0000 (Kit)

Includes flange and screws for encoder mounting.



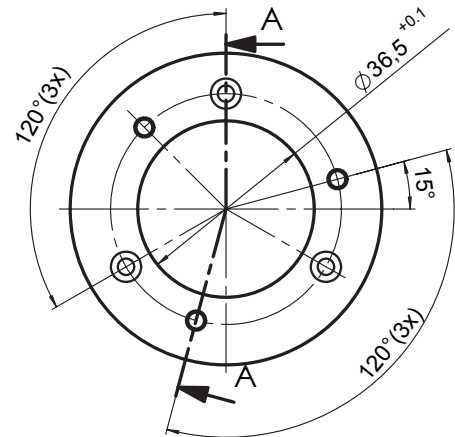
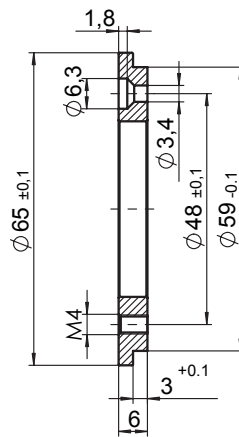
Accessories

Encoder mounting attachments

Adapter flange 65



- Suitable for encoders of the 580X and 5000 series with clamping flange
- With this adapter flange, Kübler encoders with size 58 mm can replace encoders with diameter 65 and pitch circle diameter 48 mm
- Screws are included in delivery
- Material: aluminium



Order code
8.0010.2230.0000 (Set)
Includes flange and screws
for encoder mounting.

Accessories

Encoder mounting attachments



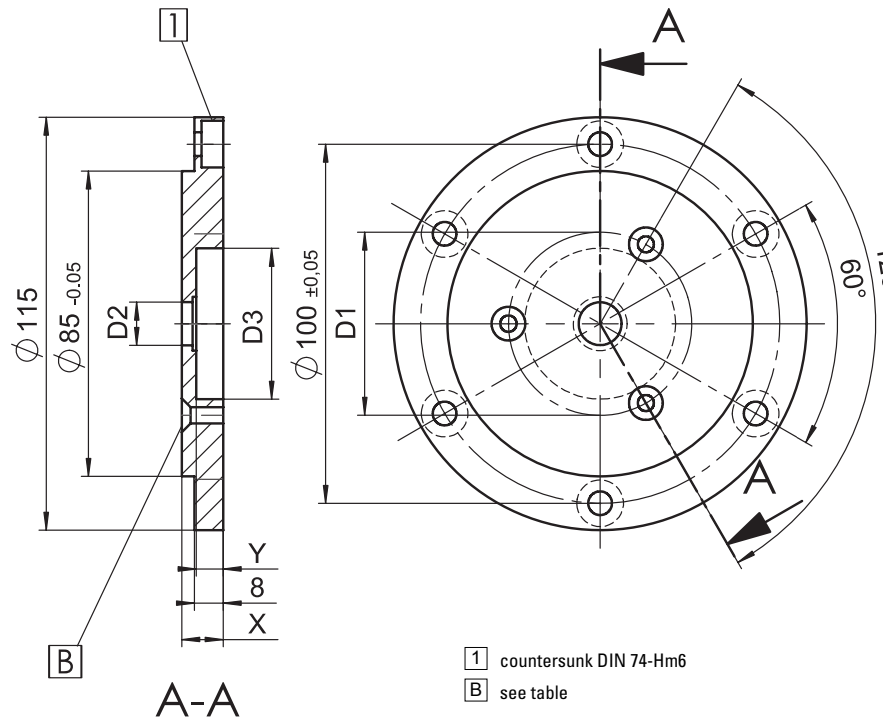
Flanges

Round flange (Euro REO 444):

Suitable for shaft encoders
 type series 580X and 5000
 703X
 9000

Order code
 see table (Kit)

Includes flange and screws for encoder
 mounting.



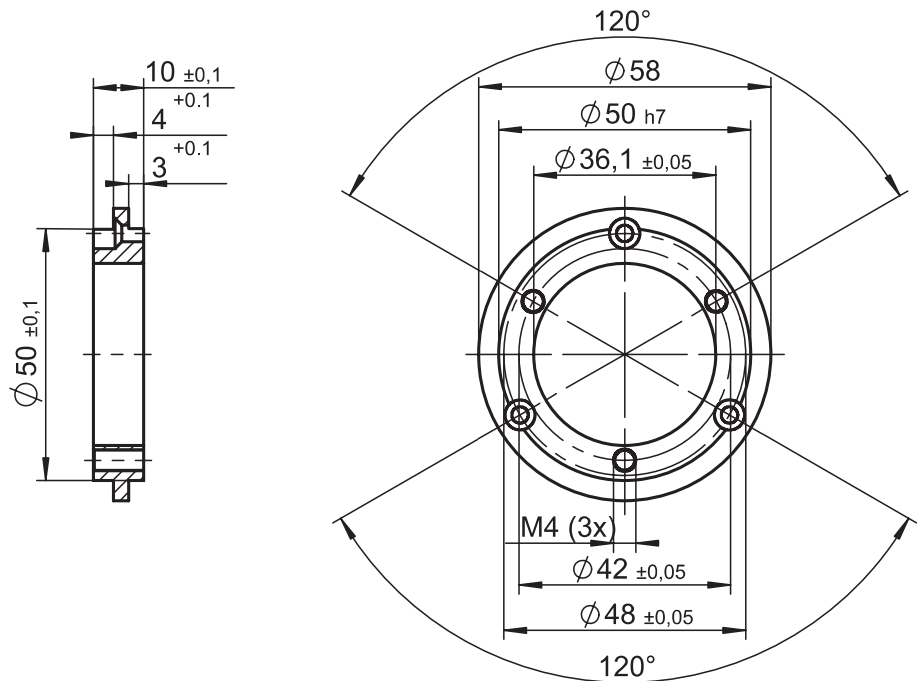
Encoder type	Order code	D1	D2	D3	X	Y	B
580X/5000	8.0010.2160.0000	48	36	58	11	1	DIN 74-BM3
703X	8.0010.2170.0000	51	12	42	11,5	7,5	DIN 74-BM4
9000	8.0010.2130.0000	60	40	90	11,5	6,5	DIN 74-BM6

Adapter flange

For type series 580X and 5000 encoder
 To mount encoders with clamping flange
 using the fastening eccentrics.

Includes flange and screws for encoder
 mounting.

Order code 8.0010.2180.0000 (Kit)



Accessories

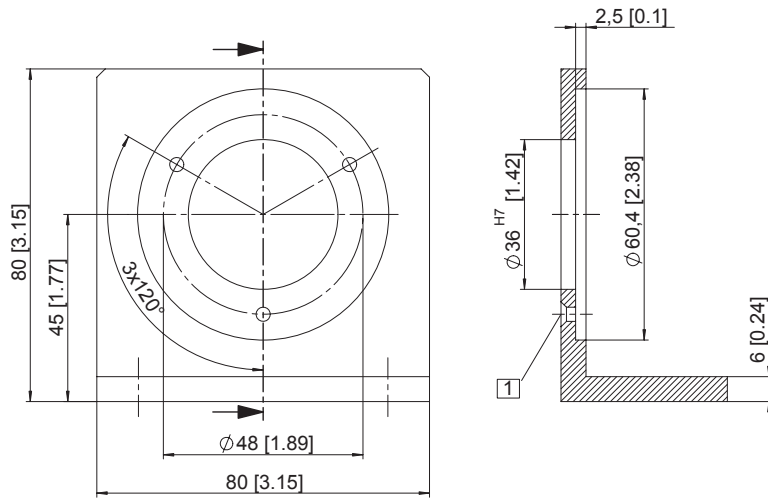
Encoder mounting attachments



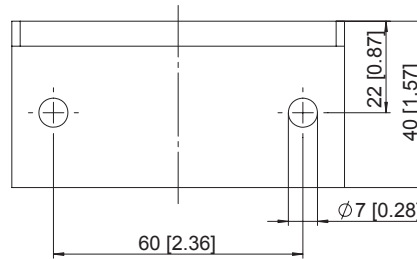
Mounting attachment

Angular flange:
 Suitable for shaft encoders type series 580X
 and 5000 with clamping flange

Order code
 8.0010.2300.0000 (KIT)
 Includes flange and screws for encoder
 mounting.



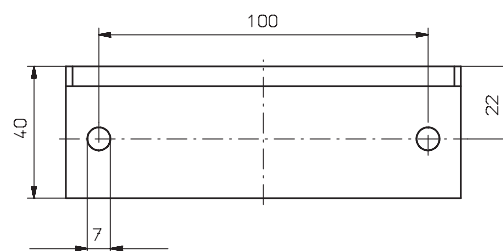
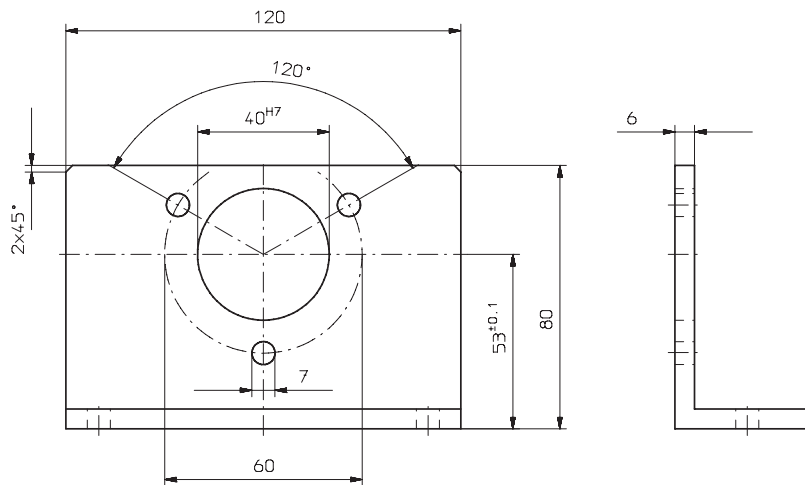
1 countersunk DIN74-Am3



Angular flange:
 Suitable for shaft encoder 8.90XX
 Material: aluminium

Order code
 8.0010.2400.0000 (Kit)

Includes flange and screws for encoder
 mounting.



Accessories

Encoder mounting attachments

Mounting attachment

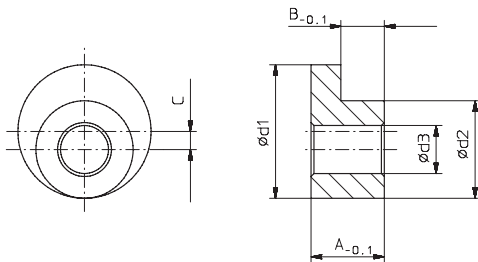


- Fastening eccentrics for rotary encoders with synchronous flange
- Including screws
- Material: ACu Zn 39 Pb 3
- Surface finish: galvanized Ni

Fastening eccentrics for shaft encoders with synchronous flange

Note:

Use at least three fastening eccentrics to mount the encoder.



Application example



Dimensions table

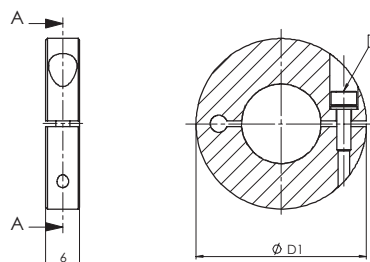
d ₁	d ₂	d ₃	A	B	C	For encoder type	Order code (set)
6,8	5	2,8	3,5	2,25	0,9	8.3600.1XXX.XXXX	8.0010.4200.0000
8,9	6,5	3,2	5,6	2,9	1,2	8.58XX.2XXX.XXXX	8.0010.4100.0000
14	9	5,3	10	4,9	2,5	8.90X0.1XXX.XXXX	8.0010.4300.0000

(set includes 3 eccentrics and 3 screws)

Mounting attachments for hollow shaft encoders

Clamping ring, stainless steel

Stainless steel, balanced clamping ring for high rotational speeds.



- 1 Screw DIN 912 A2 M2.5, maximum tightening torque 0.45 Nm.

Ordering designations

Order code:	For encoders with hollow shaft diameter
8.0000.4T00.0000	6,0 mm
8.0000.4U00.0000	8,0 mm
8.0000.4V00.0000	10,0 mm
8.0000.4W00.0000	12,0 mm