



Signature Series **ODP GENERAL PURPOSE**
115, 208 AND 230 VOLTS • 1-PHASE
FOOT MOUNT AND C-FACE
1/4 TO 10 HP

Features:

- Durable rolled steel frame construction
- NEMA Design B performance
- Meet or exceed NEMA Service Factors
- Maintenance-free double sealed ball bearings
- Continuous Duty
- Premium Class B Insulation system
- Durable, easy-to-read mylar nameplate
- UL Recognized Component Listing and CSA certified
- Warranty - 18 months from date of manufacture and 12 months from date of installation which ever period expires first.
- Made in U.S.A.



Applications:

For use where water and dust exposure is moderate. Ideally suited for use on pumps, compressors, blowers, fans and other standard industrial applications.

See Page 302 for ODP Single Phase motors with built-in overload protection.

FOOT MOUNT

| HP | SYN RPM | Frame | SF | Volts | Model Number | Product Number | Notes (see page 442) | Approx Shpg Wght (lbs) | List Price | Mult Sym |
|-------|---------|-------|------|-------------|--------------------|----------------|----------------------|------------------------|------------|----------|
| 1/4 | 1800 | 48 | 1.35 | 115/208-230 | SPD4S0.25T1C6028 | LM24457 | | 17 | \$239 | SP-1 |
| | 1200 | 56 | 1.35 | 115/208-230 | SRD6S0.25T1C6028 | LM24541 | | 17 | 392 | SP-1 |
| 1/3 | 3600 | 48 | 1.15 | 115/208-230 | SPD2S0.33T1C6028 | LM24467 | | 16 | 197 | SP-1 |
| | 1800 | 56 | 1.35 | 115/208-230 | SRD4S0.33T1C6028 | LM24570 | | 18 | 251 | SP-1 |
| | 1200 | 56 | 1.15 | 115/208-230 | SRD6S0.33T1C6028 | LM24540 | | 24 | 361 | SP-1 |
| 1/2 | 3600 | 48 | 1.25 | 115/208-230 | SPD2S0.5T1C6028 | LM24465 | | 18 | 217 | SP-1 |
| | 1800 | 56 | 1.25 | 115/208-230 | SRD4S0.5T1C6028 | LM24551 | | 22 | 277 | SP-1 |
| | 1200 | 56 | 1.25 | 115/208-230 | SRD6S0.5T1C6028 | LM24542 | | 30 | 546 | SP-1 |
| 3/4 | 3600 | 56 | 1.25 | 115/208-230 | SRD2S0.75T1C6028 | LM24674 | | 21 | 267 | SP-1 |
| | 1800 | 56 | 1.25 | 115/208-230 | SRD4S0.75T1B6028 | LM24502 | | 26 | 342 | SP-1 |
| | 1200 | 56 | 1.15 | 115/208-230 | SRD6S0.75T1C6028 | LM24543 | | 38 | 616 | SP-1 |
| 1 | 3600 | 56 | 1.25 | 115/208-230 | SRD2S1T1B6028 | LM24525 | | 23 | 281 | SP-1 |
| | 1800 | 56 | 1.15 | 115/208-230 | SRD4S1T1C6028 | LM24580 | | 30 | 372 | SP-1 |
| | 1800 | 143T* | 1.15 | 115/208-230 | SSD4S1T1C6028 | LM24675 | | 33 | 416 | SP-1 |
| 1 1/2 | 3600 | 56 | 1.15 | 115/208-230 | SRD2S1.5T1B6028 | LM24524 | | 25 | 397 | SP-1 |
| | 3600 | 143T* | 1.15 | 115/208-230 | SSD2S1.5T1C6028 | LM24676 | | 30 | 397 | SP-1 |
| | 1800 | 56H* | 1.15 | 115/208-230 | SRD4S1.5T1C6028 | LM24583 | | 40 | 484 | SP-1 |
| | 1800 | 145T* | 1.15 | 115/208-230 | SSD4S1.5T1C6028 | LM24687 | | 41 | 460 | SP-1 |
| 2 | 3600 | 56H* | 1.15 | 115/208-230 | SRD2S2T1B6028 | LM24624 | | 35 | 528 | SP-1 |
| | 3600 | 145T* | 1.15 | 115/208-230 | SSD2S2T1B6028 | LM24806 | | 40 | 566 | SP-1 |
| | 1800 | 145T* | 1.15 | 115/208-230 | SSD4S2T1B6028 | LM24677 | | 49 | 548 | SP-1 |
| | 1800 | 182T | 1.15 | 115/208-230 | SS182D4S2T1C6028 | LM24678 | | 65 | 561 | SP-1 |
| 3 | 3600 | 182T | 1.15 | 115/208-230 | SS182D2S3T1C6028 | LM24679 | | 57 | 638 | SP-1 |
| | 1800 | 184T | 1.15 | 115/208-230 | SS184D4S3T1C6028 | LM24680 | | 78 | 603 | SP-1 |
| 5 | 3600 | 184T | 1.15 | 208-230 | SS184D2S5T1C6008 | LM24681 | | 78 | 761 | SP-1 |
| | 1800 | 184T | 1.15 | 208-230 | SSD4S5T1B6008 | LM24682 | | 87 | 720 | SP-1 |
| 7 1/2 | 1800 | 215T | 1.15 | 208-230 | SS215D4S7.5T1B6008 | LM24683 | | 118 | 1,056 | SP-1 |
| 10 | 1800 | 215T | 1.15 | 208-230 | SSD4S10T1B6008 | LM24684 | | 140 | 1,498 | SP-1 |

* 56H, 143T and 145T Combination Base with 12 mounting holes.

Prices and data subject to change without notice.

Product numbers in red are STOCK items.

Signature Series **ODP GENERAL PURPOSE**
 115, 208 AND 230 VOLTS • 1-PHASE
 FOOT MOUNT AND C-FACE
 1/4 TO 10 HP



C-FACE WITH FEET

| HP | SYN RPM | Frame | SF | Volts | Model Number | Product Number | Notes (see page 442) | Approx Shpg Wght (lbs) | List Price | Mult Sym |
|-------|---------|-------|------|-------------|--------------------|----------------|----------------------|------------------------|------------|----------|
| 1/2 | 1800 | 56C | 1.25 | 115/208-230 | SRD4S0.5TLC1C6028 | LM24697 | | 22 | \$342 | SP-1 |
| 3/4 | 1800 | 56C | 1.25 | 115/208-230 | SRD4S0.75TLC1B6028 | LM24699 | | 26 | 395 | SP-1 |
| 1 | 1800 | 56C | 1.15 | 115/208-230 | SRD4S1TLC1C6028 | LM24700 | | 30 | 452 | SP-1 |
| 1 1/2 | 1800 | 56HC | 1.15 | 115/208-230 | SRD4S1.5TLC1C6028 | LM24701 | | 40 | 484 | SP-1 |
| 2 | 1800 | 145TC | 1.15 | 115/208-230 | SSD4S2TLC1B6028 | LM24698 | | 50 | 519 | SP-1 |

C-FACE FOOTLESS

| HP | SYN RPM | Frame | SF | Volts | Model Number | Product Number | Notes (see page 442) | Approx Shpg Wght (lbs) | List Price | Mult Sym |
|-------|---------|-------|-------------|------------------|---------------------|----------------|----------------------|------------------------|------------|----------|
| 1/4 | 1800 | 56C | 1.35 | 115/208-230 | SRD4S0.25TLCN1C6028 | LM24569 | | 17 | \$238 | SP-1 |
| 1/3 | 3600 | 56C | 1.15 | 115/208-230 | SRD2S0.33TLCN1C6028 | LM24688 | | 16 | 208 | SP-1 |
| | 1800 | 56C | 1.35 | 115/208-230 | SRD4S0.33TLCN1C6028 | LM24571 | | 17 | 274 | SP-1 |
| 1/2 | 3600 | 56C | 1.25 | 115/208-230 | SRD2S0.5TLCN1C6028 | LM24689 | | 17 | 217 | SP-1 |
| | 1800 | 56C | 1.25 | 115/208-230 | SRD4S0.5TLCN1C6028 | LM24555 | | 21 | 312 | SP-1 |
| | 1200 | 56C | 1.25 | 115/208-230 | SRD6S0.5TLCN1C6028 | LM24544 | | 33 | 567 | SP-1 |
| 3/4 | 3600 | 56C | 1.25 | 115/208-230 | SRD2S0.75TLCN1C6028 | LM24690 | | 19 | 282 | SP-1 |
| | 1800 | 56C | 1.25 | 115/208-230 | SRD4S0.75TLCN1B6028 | LM24505 | | 25 | 378 | SP-1 |
| | 1200 | 56C | 1.15 | 115/208-230 | SRD6S0.75TLCN1C6028 | LM24691 | | 37 | 634 | SP-1 |
| 1 | 3600 | 56C | 1.25 | 115/208-230 | SRD2S1TLCN1B6028 | LM24526 | | 24 | 299 | SP-1 |
| | 1800 | 56C | 1.15 | 115/208-230 | SRD4S1TLCN1C6028 | LM24586 | | 29 | 399 | SP-1 |
| | 1800 | 143TC | 1.15 | 115/208-230 | SSD4S1TLCN1C6028 | LM24692 | | 32 | 434 | SP-1 |
| 1 1/2 | 3600 | 56C | 1.15 | 115/208-230 | SRD2S1.5TLCN1B6028 | LM24523 | | 26 | 414 | SP-1 |
| | 1800 | 56HC | 1.15 | 115/208-230 | SRD4S1.5TLCN1C6028 | LM24587 | | 39 | 484 | SP-1 |
| 2 | 3600 | 56HC | 1.15 | 115/208-230 | SRD2S2TLCN1B6028 | LM24527 | | 35 | 542 | SP-1 |
| | 3600 | 145TC | 1.15 | 115/208-230 | SSD2S2TLCN1B6028 | LM24693 | | 40 | 548 | SP-1 |
| 1800 | 56C | 1.15 | 115/208-230 | SRD4S2TLCN1B6028 | LM24507 | | 45 | 545 | SP-1 | |
| | 145TC | 1.15 | 115/208-230 | SSD4S2TLCN1B6028 | LM24694 | | 50 | 549 | SP-1 | |
| 3 | 1800 | 184TC | 1.15 | 115/208-230 | SS184D4S3TLCN1C6028 | LM24695 | | 85 | 623 | SP-1 |
| 5 | 1800 | 184TC | 1.15 | 208-230 | SSD4S5TLCN1B6008 | LM24696 | | 94 | 873 | SP-1 |

* 56H, 143T and 145T Combination Base with 12 mounting holes.

Prices and data subject to change without notice.

Product numbers in red are STOCK items.



Signature Series **ODP GENERAL PURPOSE
OVERLOAD PROTECTION**

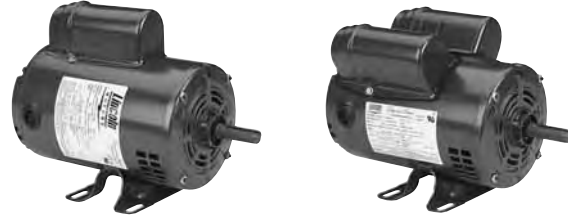
**115, 208 AND 230 VOLTS • 1-PHASE
FOOT MOUNT
1/4 TO 2 HP**

Features:

- Built-in thermal overload protection
- Durable rolled steel frame construction
- NEMA Design B performance
- Meet or exceed NEMA Service Factors
- Maintenance-free double sealed ball bearings
- Continuous Duty
- Premium Class B Insulation system
- Durable, easy-to-read mylar nameplate
- UL Recognized Component Listing and CSA certified
- Warranty - 18 months from date of manufacture and 12 months from date of installation which ever period expires first.
- Made in U.S.A.

Applications:

For use where water and dust exposure is moderate. Ideally suited for use on pumps, compressors, blowers, fans and other standard industrial applications where thermal overload protection is desired.



CAUTION A motor with an auto reset protector (TP2 suffix) must not be used where automatic restarting (after motor cool-down) would endanger personnel or equipment. Such applications should use a manual reset protector (TP1).

FOOT MOUNT

| HP | SYN RPM | Frame | SF | Volts | Model Number | Product Number | Notes (see page 442) | Approx Shpg Wght (lbs) | List Price | Mult Sym |
|-------|---------|-----------|-------------|--------------------|----------------------------|----------------|----------------------|------------------------|------------|-------------|
| 1/4 | 1800 | 48 | 1.35 | 115/208-230 | SPD4S0.25T1C6028TP1 | LM24458 | ML | 17 | \$242 | SP-1 |
| 1/3 | 1800 | 56 | 1.35 | 115/208-230 | SRD4S0.33T1C6028TP1 | LM24550 | ML | 18 | 285 | SP-1 |
| | 1800 | 56 | 1.35 | 115/208-230 | SRD4S0.33T1C6028TP2 | LM24549 | AT | 18 | 282 | SP-1 |
| 1/2 | 1800 | 56 | 1.25 | 115/208-230 | SRD4S0.5T1C6028TP1 | LM24553 | ML | 23 | 339 | SP-1 |
| | 1800 | 56 | 1.25 | 115/208-230 | SRD4S0.5T1C6028TP2 | LM24552 | AT | 22 | 322 | SP-1 |
| 3/4 | 1800 | 56 | 1.25 | 115/208-230 | SRD4S0.75T1B6028TP1 | LM24504 | ML | 25 | 427 | SP-1 |
| | 1800 | 56 | 1.25 | 115/208-230 | SRD4S0.75T1B6028TP2 | LM24503 | AT | 25 | 393 | SP-1 |
| 1 | 1800 | 56 | 1.15 | 115/208-230 | SRD4S1T1C6028TP1 | LM24582 | ML | 29 | 437 | SP-1 |
| | 1800 | 56 | 1.15 | 115/208-230 | SRD4S1T1C6028TP2 | LM24581 | AT | 29 | 418 | SP-1 |
| 1 1/2 | 1800 | 56H* | 1.15 | 115/208-230 | SRD4S1.5T1C6028TP1 | LM24585 | ML | 40 | 528 | SP-1 |
| 2 | 1800 | 145T* | 1.15 | 115/208-230 | SSD4S2T1B6028TP1 | LM24685 | ML | 50 | 608 | SP-1 |

* 56H, 143T and 145T Combination Base with 12 mounting holes.

Prices and data subject to change without notice.

Product numbers in red are STOCK items.