

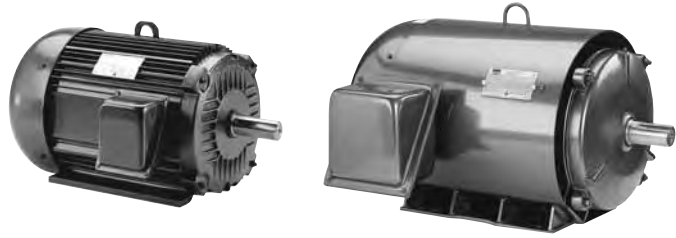


TEFC 15 TO 60 HZ CONSTANT TORQUE INVERTER DUTY

230/460 & 460 VOLTS • 3-PHASE
FOOT MOUNT & C-FACE
1/3 TO 400 HP

Features:

- 4:1 Constant torque speed range at continuous duty of 15-60 Hz.
- Variable torque speed range with open loop drive of 0-60 Hz.
- Constant horsepower speed range of 2x base speed (56-256T frames) or 1.5x base speed* (284T-449T frames).
- Wider speed ranges possible on intermittent duty
- Ultimate Spike Defense™ Insulation System
- 1.00 service factor on PWM waveform, 1.15 service factor or better on sine-wave power.
- Precision dynamic balanced rotor assembly
- Thermal overload protection (Class F thermostats)
- Warranty: 42 months from date of manufacture and 36 months from date of installation which ever period expires first.
- Made in the U.S.A.



Applications:

For use in constant torque (conveyors, machine tools) or variable torque (pumps, fans) variable speed applications within the stated speed range of the motor.

In a very small percentage of installations, bearing currents can develop in motors operated by PWM-based adjustable-speed drives. Contact your local sales office to review ways of eliminating bearing currents.

* Actual speed not to exceed "RPM MAX" listed for specific motor.

FOOT MOUNT

| HP | SYN RPM @ 60 Hz | RPM Max | Frame | FL Nom Eff (%) | Volts | Model Number | Product Number | Notes (see page 306) | Approx Shpg Wght (lbs) | List Price | Mult Sym |
|-------|-----------------|---------|-------|----------------|---------|-----------------|----------------|----------------------|------------------------|------------|----------|
| 1/3 | 1800 | 4000 | 56 | 72.0 | 230/460 | SRF4S0.33T61Q40 | LM22644 | | 28 | \$458 | LS-1 |
| 1/2 | 3600 | 4000 | 56 | 70.0 | 230/460 | SRF2S0.5T61Q40 | LM22646 | | 28 | 442 | LS-1 |
| | 1800 | 4000 | 56 | 74.0 | 230/460 | SRF4S0.5T61Q40 | LM22648 | | 28 | 527 | LS-1 |
| | 1200 | 4000 | 56 | 70.0 | 230/460 | SRF6S0.5T61Q40 | LM22650 | | 28 | 629 | LS-1 |
| 3/4 | 3600 | 4000 | 56 | 74.0 | 230/460 | SRF2S0.75T61Q40 | LM22652 | | 28 | 470 | LS-1 |
| | 1800 | 4000 | 56 | 77.0 | 230/460 | SRF4S0.75T61Q40 | LM22654 | | 28 | 536 | LS-1 |
| | 1200 | 4000 | 56 | 72.0 | 230/460 | SRF6S0.75T61Q40 | LM22656 | | 36 | 637 | LS-1 |
| 1 | 3600 | 4000 | 56 | 75.5 | 230/460 | SRF2S1T61Q40 | LM22658 | | 28 | 536 | LS-1 |
| | 1800 | 4000 | 56 | 78.5 | 230/460 | SRF4S1T61Q40 | LM22660 | | 28 | 553 | LS-1 |
| | 1800 | 4000 | 143T | 82.5 | 230/460 | SSF4P1T61Q40 | LM26097 | | 46 | 621 | LS-1 |
| | 1200 | 4000 | 145T | 80.0 | 230/460 | SSF6P1T61Q40 | LM26383 | | 51 | 747 | LS-1 |
| 1 1/2 | 3600 | 4000 | 56 | 78.5 | 230/460 | SRF2S1.5T61Q40 | LM22662 | | 28 | 574 | LS-1 |
| | 3600 | 4000 | 143T | 82.5 | 230/460 | SSF2P1.5T61Q40 | TBD | | 46 | 688 | LS-1 |
| | 1800 | 4000 | 56H | 80.0 | 230/460 | SRF4S1.5T61Q40 | LM22664 | | 28 | 610 | LS-1 |
| | 1800 | 4000 | 145T | 84.0 | 230/460 | SSF4P1.5T61Q40 | LM26098 | | 51 | 628 | LS-1 |
| | 1200 | 4000 | 182T | 85.5 | 230/460 | AAF6P1.5T61Q40 | LM21188 | | 83 | 841 | LS-1 |
| 2 | 3600 | 4000 | 56H | 78.5 | 230/460 | SRF2S2T61Q40 | LM22666 | | 36 | 618 | LS-1 |
| | 3600 | 4000 | 145T | 84.0 | 230/460 | SSF2P2T61Q40 | TBD | | 51 | 729 | LS-1 |
| | 1800 | 4000 | 145T | 84.0 | 230/460 | SSF4P2T61Q40 | LM25991 | | 51 | 654 | LS-1 |
| | 1200 | 4000 | 184T | 86.5 | 230/460 | AAF6P2T61Q40 | LM21191 | | 92 | 902 | LS-1 |
| 3 | 3600 | 4000 | 182T | 85.5 | 230/460 | AAF2P3T61Q40 | LM21189 | | 83 | 861 | LS-1 |
| | 1800 | 4000 | 182T | 87.5 | 230/460 | AAF4P3T61Q40 | LM21190 | | 83 | 793 | LS-1 |
| | 1200 | 4000 | 213T | 87.5 | 230/460 | AF6P3T61Q40 | LM21194 | | 127 | 1141 | LS-1 |
| 5 | 3600 | 4000 | 184T | 87.5 | 230/460 | AAF2P5T61Q40 | LM21192 | | 92 | 1001 | LS-1 |
| | 1800 | 4000 | 184T | 87.5 | 230/460 | AAF4P5T61Q40 | LM21193 | | 92 | 884 | LS-1 |
| | 1200 | 4000 | 215T | 87.5 | 230/460 | AAF6P5T61Q40 | LM21197 | | 138 | 1522 | LS-1 |

Prices and data subject to change without notice.

Product numbers in red are STOCK items.

TEFC 15 TO 60 HZ CONSTANT TORQUE INVERTER DUTY



**230/460 & 460 VOLTS • 3-PHASE
FOOT MOUNT & C-FACE
1/3 TO 400 HP**

FOOT MOUNT (cont'd)

| HP | SYN RPM @ 60 Hz | RPM Max | Frame | FL Nom Eff (%) | Volts | Model Number | Product Number | Notes (see page 306) | Approx Shpg Wght (lbs) | List Price | Mult Sym |
|-------|-----------------|---------|-------|----------------|---------|-----------------|----------------|----------------------|------------------------|------------|----------|
| 7 1/2 | 3600 | 4600 | G213T | 88.5 | 230/460 | AF2P7.5T61Q40 | LM21195 | | 127 | \$1353 | LS-1 |
| | 1800 | 4600 | 213T | 89.5 | 230/460 | AF4P7.5T61Q40 | LM21196 | | 127 | 1166 | LS-1 |
| | 1200 | 4400 | 254T | 89.5 | 230/460 | AAF6P7.5T61Q40 | LM21200 | | 209 | 1937 | LS-1 |
| 10 | 3600 | 4600 | G215T | 89.5 | 230/460 | AF2P10T61Q40 | LM21198 | | 138 | 1480 | LS-1 |
| | 1800 | 4600 | 215T | 89.5 | 230/460 | AF4P10T61Q40 | LM21199 | | 138 | 1303 | LS-1 |
| | 1200 | 4400 | 256T | 89.5 | 230/460 | AAF6P10T61Q40 | LM21203 | | 236 | 2483 | LS-1 |
| 15 | 3600 | 4400 | G254T | 90.2 | 230/460 | AAF2P15T61Q40 | LM21201 | | 209 | 1976 | LS-1 |
| | 1800 | 4400 | 254T | 91.0 | 230/460 | AF4P15T61Q40 | LM21202 | | 209 | 1873 | LS-1 |
| | 1200 | 4200 | 284T | 90.2 | 230/460 | AF6P15T61YQ40 | LM21206 | | 363 | 3274 | LS-1 |
| 20 | 3600 | 4400 | 256T | 90.2 | 230/460 | AF2P20T61Q40 | LM21204 | | 236 | 2295 | LS-1 |
| | 1800 | 4400 | 256T | 91.0 | 230/460 | AF4P20T61Q40 | LM21205 | | 236 | 2169 | LS-1 |
| | 1200 | 4200 | 286T | 90.2 | 230/460 | AF6P20T61YQ40 | LM21209 | | 408 | 3792 | LS-1 |
| 25 | 3600 | 4200 | 284TS | 91.0 | 230/460 | AF2P25TS61YQ40 | LM21207 | | 363 | 3076 | LS-1 |
| | 1800 | 4200 | 284T | 92.4 | 230/460 | AF4P25T61YQ40 | LM21208 | | 363 | 2849 | LS-1 |
| | 1200 | 4000 | 324T | 91.7 | 230/460 | SF6P25T61YQ40 | LM21212 | | 504 | 4761 | LS-1 |
| 30 | 3600 | 4200 | 286TS | 91.0 | 230/460 | AF2P30TS61YQ40 | LM21210 | | 408 | 3553 | LS-1 |
| | 1800 | 4200 | 286T | 92.4 | 230/460 | AF4P30T61YQ40 | LM21211 | | 408 | 3333 | LS-1 |
| | 1200 | 4000 | 326T | 91.7 | 230/460 | SF6P30T61YQ40 | LM21215 | | 570 | 5810 | LS-1 |
| 40 | 3600 | 4000 | 324TS | 91.7 | 230/460 | SF2P40TS61YQ40 | LM21213 | | 504 | 4477 | LS-1 |
| | 1800 | 4000 | 324T | 93.0 | 230/460 | SF4P40T61YQ40 | LM21214 | | 504 | 4321 | LS-1 |
| | 1200 | 3800 | 364T | 93.0 | 230/460 | SF6P40T61YQ40 | LM21218 | | 765 | 6092 | LS-1 |
| 50 | 3600 | 4000 | 326TS | 92.4 | 230/460 | SF2P50TS61YQ40 | LM21216 | | 558 | 5574 | LS-1 |
| | 1800 | 4000 | 326T | 93.0 | 230/460 | SF4P50T61YQ40 | LM21217 | | 558 | 4636 | LS-1 |
| | 1200 | 3800 | 365T | 93.0 | 230/460 | SF6P50T61YQ40 | LM21221 | | 822 | 7556 | LS-1 |
| 60 | 3600 | 3800 | 364TS | 93.0 | 230/460 | SF2P60TS61YQ40 | LM21219 | | 765 | 8309 | LS-1 |
| | 1800 | 3800 | 364T | 93.6 | 230/460 | SF4P60T61YQ40 | LM21220 | | 765 | 6718 | LS-1 |
| | 1200 | 3600 | 404T | 93.6 | 230/460 | SF6P60T61YQ40 | LM21224 | | 918 | 8696 | LS-1 |
| 75 | 3600 | 3800 | 365TS | 93.0 | 230/460 | SF2P75TS61YQ40 | LM21222 | | 822 | 8685 | LS-1 |
| | 1800 | 3800 | 365T | 94.1 | 230/460 | SF4P75T61YQ40 | LM21223 | | 822 | 8535 | LS-1 |
| | 1200 | 3600 | 405T | 93.6 | 230/460 | SF6P75T61YQ40 | LM21225 | | 1002 | 11134 | LS-1 |
| 100 | 3600 | 3600 | 405TS | 93.6 | 230/460 | SF2P100TS61YQ40 | LM21226 | | 1002 | 11825 | LS-1 |
| | 1800 | 3600 | 405T | 94.5 | 230/460 | SF4P100T61YQ40 | LM21227 | | 1002 | 11056 | LS-1 |
| | 1200 | 3000 | 444T | 94.1 | 460 | SF6P100T64YQ40 | LM21228 | | 1351 | 14023 | LS-1 |
| 125 | 3600 | 3600 | 444TS | 94.5 | 460 | SF2P125TS64YQ40 | LM21229 | | 1351 | 14740 | LS-1 |
| | 1800 | 3000 | 444T | 94.5 | 460 | SF4P125T64YQ40 | LM21230 | | 1351 | 13735 | LS-1 |
| | 1200 | 3000 | 445T | 94.1 | 460 | SF6P125T64YQ40 | LM21231 | | 1504 | 16532 | LS-1 |
| 150 | 3600 | 3600 | 445TS | 94.5 | 460 | SF2P150TS64YQ40 | LM21232 | | 1504 | 17982 | LS-1 |
| | 1800 | 3000 | 445T | 95.0 | 460 | SF4P150T64YQ40 | LM21233 | | 1504 | 15889 | LS-1 |
| | 1200 | 3000 | 445T | 95.0 | 460 | SF6P150T64YQ40 | LM21234 | | 1504 | 19188 | LS-1 |
| 200 | 3600 | 3600 | 445TS | 95.0 | 460 | SF2P200TS64YQ40 | LM21235 | | 1504 | 22490 | LS-1 |
| | 1800 | 3000 | 445T | 95.0 | 460 | SF4P200T64YQ40 | LM21236 | | 1504 | 18902 | LS-1 |
| | 1200 | 3000 | 447T | 95.0 | 460 | SF6P200T64YQ40 | LM21237 | | 1812 | 22172 | LS-1 |
| 250 | 3600 | 3600 | 449TS | 95.4 | 460 | SF2P250TS64YQ40 | LM21240 | | 2185 | 29031 | LS-1 |
| | 1800 | 2800 | 447T | 95.0 | 460 | SF4P250T64YQ40 | LM21238 | | 1812 | 22746 | LS-1 |

Prices and data subject to change without notice.

Product numbers in red are STOCK items.



TEFC 15 TO 60 HZ CONSTANT TORQUE INVERTER DUTY

230/460 & 460 VOLTS • 3-PHASE
FOOT MOUNT & C-FACE
1/3 TO 400 HP

FOOT MOUNT (cont'd)

| HP | SYN RPM @ 60 Hz | RPM Max | Frame | FL Nom Eff (%) | Volts | Model Number | Product Number | Notes (see page 306) | Approx Shpg Wght (lbs) | List Price | Mult Sym |
|-----|-----------------|---------|-------|----------------|-------|-----------------|----------------|----------------------|------------------------|------------|----------|
| 300 | 3600 | 3600 | 449TS | 95.4 | 460 | SF2P300TS64YQ40 | LM21242 | | 2185 | \$33481 | LS-1 |
| | 1800 | 2800 | 449T | 95.4 | 460 | SF4P300T64YQ40 | LM21239 | | 2185 | 24618 | LS-1 |
| 350 | 3600 | 3600 | 449TS | 95.8 | 460 | SF2B350TS64YQ40 | LM21243 | | 2185 | 46127 | LS-1 |
| | 1800 | 2800 | 449T | 95.4 | 460 | SF4P350T64YQ40 | LM21244 | | 2185 | 24307 | LS-1 |
| 400 | 1800 | 2800 | 449T | 96.2 | 460 | SF4B400T64YQ40 | TBD | | TBD | 41887 | TBD |

C-FACE WITH FEET

| HP | SYN RPM @ 60 Hz | RPM Max | Frame | FL Nom Eff (%) | Volts | Model Number | Product Number | Notes (see page 306) | Approx Shpg Wght (lbs) | List Price | Mult Sym |
|-------|-----------------|---------|--------|----------------|---------|------------------|----------------|----------------------|------------------------|------------|----------|
| 1/3 | 1800 | 4000 | 56C | 72.0 | 230/460 | SRF4S0.33TC61Q40 | LM22645 | | 33 | \$499 | LS-1 |
| 1/2 | 3600 | 4000 | 56C | 70.0 | 230/460 | SRF2S0.5TC61Q40 | LM22647 | | 33 | 484 | LS-1 |
| | 1800 | 4000 | 56C | 74.0 | 230/460 | SRF4S0.5TC61Q40 | LM22649 | | 33 | 569 | LS-1 |
| | 1200 | 4000 | 56C | 70.0 | 230/460 | SRF6S0.5TC61Q40 | LM22651 | | 33 | 670 | LS-1 |
| 3/4 | 3600 | 4000 | 56C | 74.0 | 230/460 | SRF2S0.75TC61Q40 | LM22653 | | 33 | 511 | LS-1 |
| | 1800 | 4000 | 56C | 77.0 | 230/460 | SRF4S0.75TC61Q40 | LM22655 | | 33 | 577 | LS-1 |
| | 1200 | 4000 | 56C | 72.0 | 230/460 | SRF6S0.75TC61Q40 | LM22657 | | 28 | 678 | LS-1 |
| 1 | 3600 | 4000 | 56C | 75.5 | 230/460 | SRF2S1TC61Q40 | LM22659 | | 33 | 577 | LS-1 |
| | 1800 | 4000 | 56C | 78.5 | 230/460 | SRF4S1TC61Q40 | LM22661 | | 28 | 593 | LS-1 |
| | 1800 | 4000 | 143TC | 82.5 | 230/460 | SSF4P1TC61Q40 | LM26081 | | 52 | 663 | LS-1 |
| | 1200 | 4000 | 145TC | 80.0 | 230/460 | SSF6P1TC61Q40 | LM26323 | | 57 | 791 | LS-1 |
| 1 1/2 | 3600 | 4000 | 56C | 78.5 | 230/460 | SRF2S1.5TC61Q40 | LM22663 | | 28 | 615 | LS-1 |
| | 3600 | 4000 | 143TC | 82.5 | 230/460 | SSF2P1.5TC61Q40 | TBD | | 52 | 681 | LS-1 |
| | 1800 | 4000 | 56HC | 80.0 | 230/460 | SRF4S1.5TC61Q40 | LM22665 | | 36 | 650 | LS-1 |
| | 1800 | 4000 | 145TC | 84.0 | 230/460 | SSF4P1.5TC61Q40 | LM26008 | | 57 | 668 | LS-1 |
| | 1200 | 4000 | 182TC | 85.5 | 230/460 | AAF6P1.5TC61Q40 | LM22822 | | 95 | 904 | LS-1 |
| 2 | 3600 | 4000 | 56HC | 78.5 | 230/460 | SRF2S2TC61Q40 | LM22667 | | 36 | 661 | LS-1 |
| | 3600 | 4000 | 145TC | 84.0 | 230/460 | SSF2P2TC61Q40 | TBD | | 57 | 743 | LS-1 |
| | 1800 | 4000 | 145TC | 84.0 | 230/460 | SSF4P2TC61Q40 | LM25962 | | 57 | 712 | LS-1 |
| | 1200 | 4000 | 184TC | 86.5 | 230/460 | AAF6P2TC61Q40 | LM22825 | | 104 | 964 | LS-1 |
| 3 | 3600 | 4000 | 182TC | 85.5 | 230/460 | AAF2P3TC61Q40 | LM22826 | | 95 | 924 | LS-1 |
| | 1800 | 4000 | 182TC | 87.5 | 230/460 | AAF4P3TC61Q40 | LM22827 | | 95 | 858 | LS-1 |
| | 1200 | 4600 | 213TC | 87.5 | 230/460 | AF6P3TC61Q40 | LM22828 | | 138 | 1216 | LS-1 |
| 5 | 3600 | 4000 | 184TC | 87.5 | 230/460 | AAF2P5TC61Q40 | LM22829 | | 104 | 1065 | LS-1 |
| | 1800 | 4000 | 184TC | 87.5 | 230/460 | AAF4P5TC61Q40 | LM22830 | | 104 | 950 | LS-1 |
| | 1200 | 4600 | 215TC | 87.5 | 230/460 | AF6P5TC61Q40 | LM31434 | | 149 | 1594 | LS-1 |
| 7 1/2 | 3600 | 4600 | G213TC | 88.5 | 230/460 | AF2P7.5TC61Q40 | LM22832 | | 138 | 1335 | LS-1 |
| | 1800 | 4600 | 213TC | 89.5 | 230/460 | AAF4P7.5TC61Q40 | LM22833 | | 138 | 1189 | LS-1 |
| | 1200 | 4400 | 254TC | 89.5 | 230/460 | AF6P7.5TC61Q40 | LM22834 | | 221 | 2122 | LS-1 |
| 10 | 3600 | 4600 | G215TC | 89.5 | 230/460 | AF2P10TC61Q40 | LM22835 | | 149 | 1554 | LS-1 |
| | 1800 | 4600 | 215TC | 89.5 | 230/460 | AF4P10TC61Q40 | LM22836 | | 149 | 1378 | LS-1 |
| | 1200 | 4400 | 256TC | 89.5 | 230/460 | AF6P10TC61Q40 | LM22837 | | 248 | 2580 | LS-1 |
| 15 | 3600 | 4400 | G254TC | 90.2 | 230/460 | AF2P15TC61Q40 | LM22838 | | 221 | 2074 | LS-1 |
| | 1800 | 4400 | 254TC | 91.0 | 230/460 | AF4P15TC61Q40 | LM22839 | | 221 | 1970 | LS-1 |
| 20 | 3600 | 4400 | 256TC | 90.2 | 230/460 | AF2P20TC61Q40 | LM22840 | | 248 | 2391 | LS-1 |
| | 1800 | 4400 | 256TC | 91.0 | 230/460 | AF4P20TC61Q40 | LM22841 | | 248 | 2268 | LS-1 |

Prices and data subject to change without notice.

Product numbers in red are STOCK items.