



ODP

**208, 230/460 & 460 VOLTS • 3-PHASE
FOOT MOUNT AND C-FACE
1/4 TO 500 HP**

Signature Series **MOTORS**

Frames 48 - 256T

Features:

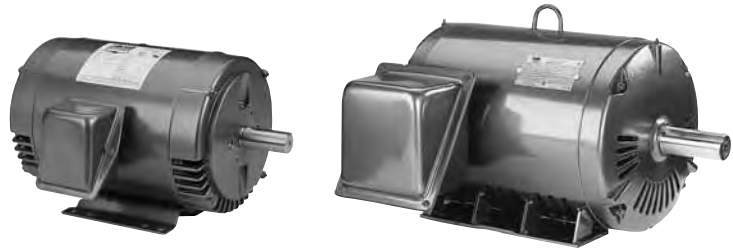
- Industry leading 1.25 service factor*
- Two levels of premium efficiency - P efficiency codes meet and B efficiency codes exceed the energy efficiency requirements of the United States and Canada.
- Nameplated for 50 Hz and 208 V/60 Hz Operation – See “Notes” column.
- Continuous Duty
- Inverter-Rated
- Premium Insulation Systems –
48 & 56 frames: Class B
143T-215T frames: Class F
- UL Recognized Component Listing and CSA
- Warranty (sine-wave power & inverter power) –
48 & 56 frames: 18 months from date of manufacture and 12 months from date of installation which ever period expires first.
143T-256T frames: 30 months from date of manufacture and 24 months from date of installation which ever period expires first.

Applications:

For use where water and dust exposure is minimal. Ideally suited for use on pumps, compressors, blowers, fans and other standard industrial applications.



* P and B efficiency codes. Information subject to change without notice.



ULTIMATE E® MOTORS

Frames 284T - 449T

Features:

- Industry leading 1.25 service factor through 200 HP*
- Superior speed-torque curves - most models* nameplated Design B & C - see “Notes” column.
- Two levels of premium efficiency - P efficiency codes meet and B efficiency codes exceed the energy efficiency requirements of the United States and Canada.
- Nameplated for 50 Hz and 208 V/60 Hz Operation – See “Notes” column.
- Continuous Duty
- Inverter-Rated
- Premium Class F Plus Insulation system
- Y-delta start capability frames 284T-449T
- UL Recognized Component Listing and CSA certified
- Warranty (sine-wave power) –
284T-449T frames: 60 months from date of manufacture and 54 months from date of installation which ever period expires first.
Inverter Power: 30 months from date of manufacture and 24 months from date of installation which ever period expires first.
- Shielded ball bearing for direct coupled applications. Contact your local sales office for belted applications.

FOOT MOUNT

HP	SYN RPM	Frame	FL Nom Eff (%)	SF	Volts	Model Number	Product Number	Notes (see page 442)	Approx Shpg Wght (lbs)	List Price	Mult Sym
1/4	1800	48	62.0	1.35	230/460	SPD4S0.25T61	LM24866	H, V	19	\$213	LT-1A
1/3	3600	56	66.0	1.35	230/460	SRD2S0.33T61	LM24867	H, V	18	217	LT-1A
	1800	56	67.0	1.35	230/460	SRD4S0.33T61	LM24152	H, W	15	231	LT-1A
	1200	56	62.0	1.35	230/460	SRD6S0.33T61	LM24868	H, W	19	366	LT-1A
1/2	3600	56	66.0	1.25	230/460	SRD2S0.5T61	LM24869	H, V	22	231	LT-1A
	1800	56	70.0	1.25	230/460	SRD4S0.5T61	LM24098	H, W	17	265	LT-1A
	1200	56	68.0	1.25	230/460	SRD6S0.5T61	LM24146	H	22	404	LT-1A
3/4	3600	56	74.0	1.25	230/460	SRD2S0.75T61	LM24870	H, V	21	272	LT-1A
	1800	56	75.5	1.25	230/460	SRD4S0.75T61	LM24099	H, V	20	295	LT-1A
	1200	56	76.5	1.15	230/460	SRD6S0.75T61	LM24162	H, W	26	437	LT-1A
1	3600	56	74.0	1.25	230/460	SRD2S1T61	LM24155	H, W	24	315	LT-1A
	1800	56	76.5	1.15	230/460	SRD4S1T61	LM24111	H	22	306	LT-1A
	1800	143T	84.0	1.15	230/460	SSD4B1T61	LM24871	H, V	35	446	LT-1E
	1800	143T	82.5	1.25	230/460	SSD4P1T61	LM24116	H, W	34	319	LT-1B
	1200	56H	75.5	1.15	230/460	SRD6S1T61	LM24872	H, W	29	416	LT-1A
	1200	145T	80.0	1.25	230/460	SSD6P1T61	LM24123	K, V	48	452	LT-1B
	900	182T	72.0	1.15	230/460	SSD8S1T61	LM24873	H	55	563	LT-1A
1 1/2	3600	56	80.0	1.15	230/460	SRD2S1.5T61	LM24874	H, W	23	353	LT-1A
	3600	143T	82.5	1.25	230/460	SSD2P1.5T61	LM24150	H, V	28	380	LT-1B
	1800	56H	80.0	1.15	230/460	SRD4S1.5T61	LM24117	H, W	28	324	LT-1A
	1800	145T	85.5	1.15	230/460	SSD4B1.5T61	LM24875	H, V	45	467	LT-1E
	1800	145T	84.0	1.25	230/460	SSD4P1.5T61	LM24101	H, V	40	337	LT-1B
	1200	182T	84.0	1.15	230/460	SSD6P1.5T61	LM24876	H, V	80	533	LT-1B
	900	184T	77.0	1.15	230/460	SSD8S1.5T61	LM24238	K	88	682	LT-1A

Prices and data subject to change without notice.

**208, 230/460 & 460 VOLTS • 3-PHASE
FOOT MOUNT AND C-FACE
1/4 TO 500 HP**

FOOT MOUNT (cont'd)

HP	SYN RPM	Frame	FL Nom Eff (%)	SF	Volts	Model Number	Product Number	Notes (see page 442)	Approx Shpg Wght (lbs)	List Price	Mult Sym	
2	3600	56H	80.0	1.15	230/460	SRD2S2T61	LM24877	H	25	\$412	LT-1A	
	3600	145T	84.0	1.25	230/460	SSD2P2T61	LM24100	H	28	448	LT-1B	
	1800	56H	81.5	1.15	230/460	SRD4S2T61	LM24106	H	36	349	LT-1A	
	1800	145T	85.5	1.25	230/460	SSD4B2T61	LM24169	C, H, W	48	528	LT-1E	
	1800	145T	84.0	1.25	230/460	SSD4P2T61	LM24082	H, W	44	363	LT-1B	
	1200	184T	85.5	1.25	230/460	SSD6P2T61	LM24237	K, V	74	521	LT-1B	
	900	213T	80.0	1.15	230/460	SSD8S2T61	LM24225	H	106	898	LT-1A	
3	3600	56H	84.0	1.15	230/460	SRD2S3T61	LM24878	H	33	393	LT-1A	
	3600	145T	84.0	1.25	230/460	SSD2P3T61	LM24120	H, W	33	410	LT-1B	
	1800	182T	89.5	1.25	230/460	SSD4B3T61	LM24222	H, V	56	540	LT-1E	
	1800	182T	86.5	1.25	230/460	SSD4P3T61AP21	LM24177	X	83	396	LT-1B	
	1200	213T	86.5	1.25	230/460	SSD6P3T61	LM24200	K, V	104	613	LT-1B	
5	900	215T	78.5	1.15	230/460	SSD8S3T61	LM24228	H, Q	134	1,069	LT-1A	
	3600	182T	86.6	1.25	230/460	SSD2P5T61	LM24239	H, V	88	461	LT-1B	
	1800	184T	89.5	1.25	230/460	SSD4B5T61	LM24202	H, W	91	605	LT-1E	
	1800	184T	87.5	1.25	230/460	SSD4P5T61AP21	LM24172	K, V	87	439	LT-1B	
	1200	215T	87.5	1.25	230/460	SSD6P5T61	LM24244	K, V	135	805	LT-1B	
7 1/2	900	254T	82.5	1.15	230/460	SSD8S5T61	LM24241		175	1,477	LT-1A	
	3600	184T	87.5	1.15	230/460	SSD2P7.5T61	LM24181	J, Y	88	635	LT-1B	
	1800	213T	91.0	1.25	230/460	SSD4B7.5T61	LM24194	H, V	125	771	LT-1E	
	1800	213T	88.5	1.15	230/460	SSD4P7.5T61AP21	LM24173	H, V	121	623	LT-1B	
	1200	254T	88.5	1.25	230/460	SSD6P7.5T61	LM24214	K, V	150	995	LT-1B	
10	900	256T	84.0	1.15	230/460	SSD8S7.5T61	LM24243	H	167	1,878	LT-1A	
	3600	213T	88.5	1.25	230/460	SSD2P10T61	LM24174	H, W	138	796	LT-1B	
	1800	215T	91.0	1.25	230/460	SSD4B10T61	LM24193	H, V	155	910	LT-1E	
	1800	215T	89.5	1.15	230/460	SSD4P10T61AP21	LM24171	H	138	765	LT-1B	
	1200	256T	90.2	1.25	230/460	SSD6P10T61	LM24233	K, W	221	1,286	LT-1B	
15	3600	215T	90.2	1.25	230/460	SSD2P15T61	LM24178	H, W	135	1,064	LT-1B	
	1800	254T	93.0	1.25	230/460	CCD4B15T61	LM24190	H, V	300	1,323	LT-1E	
	1800	254T	91.0	1.25	230/460	SSD4P15T61	LM24175	H, W	215	1,106	LT-1B	
	1200	284T	91.7	1.25	230/460	CCD6B15T61Y	LM31244		420	2,145	LT-1E	
	1200	284T	90.2	1.25	230/460	SD6P15T61Y	LM13956+		348	1,783	LT-1C	
	1200	284T	90.2	1.25	230/460	CCD6P15T61Y	LM29574		350	1,783	LT-1C	
	20	3600	254T	91.0	1.25	230/460	SSD2P20T61	LM24187	H, W	161	1,340	LT-1B
20	1800	256T	92.4	1.25	230/460	CCD4B20T61	LM24199	H, V	350	1,610	LT-1E	
	1800	256T	91.0	1.25	230/460	SSD4P20T61	LM24179	A, H, W	233	1,389	LT-1B	
	1200	286T	91.0	1.25	230/460	CCD6P20T61Y	LM29575		375	2,523	LT-1C	
	1200	286T	91.0	1.25	230/460	SD6P20T61Y	LM13959+		389	2,523	LT-1C	
	1200	286T	92.4	1.25	230/460	CCD6B20T61Y	LM30273		462	2,575	LT-1E	
	25	3600	256T	91.0	1.25	230/460	SSD2P25T61	LM24184	H, Q	200	1,632	LT-1B
	25	1800	284T	93.0	1.25	230/460	CCD4B25T61Y	LM29576		350	2,259	LT-1E
1800		284T	91.7	1.25	230/460	CCD4P25T61Y	LM30118		348	1,867	LT-1C	
1800		284TS	91.7	1.25	230/460	CCD4P25TS61Y	LM29937		348	1,867	LT-1C	
1200		324T	92.4	1.25	230/460	SD6B25T61Y	LM13809	C, K	469	3,413	LT-1E	
1200		324T	91.7	1.25	230/460	SD6P25T61Y	LM13749	C, K	469	2,767	LT-1C	
30		3600	284TS	93.0	1.25	230/460	SD2B30TS61Y	LM13966	H, M	348	2,608	LT-1E
30		3600	284TS	91.0	1.25	230/460	SD2P30TS61Y	LM13954	H, Q	348	2,165	LT-1C
	3600	284T	91.0	1.25	230/460	SD2P30T61Y	LM20099	H, Q	348	2,165	LT-1C	
	1800	286T	93.6	1.25	230/460	CCD4B30T61Y	LM29577		400	2,607	LT-1	
	1800	286T	92.4	1.25	230/460	CCD4P30T61Y	LM29923		400	2,165	LT-1C	
	1800	286TS	92.4	1.25	230/460	CCD4P30TS61Y	LM29935		400	2,165	LT-1C	
	1200	326T	93.6	1.25	230/460	SD6B30T61Y	LM13810	C, K, Q	522	3,852	LT-1E	
	1200	326T	92.4	1.25	230/460	SD6P30T61Y	LM13750	C, K, Q	522	3,165	LT-1C	

Prices and data subject to change without notice.

+ Discontinued



ODP

**208, 230/460 & 460 VOLTS • 3-PHASE
FOOT MOUNT AND C-FACE
1/4 TO 500 HP**

FOOT MOUNT (cont'd)

HP	SYN RPM	Frame	FL Nom Eff (%)	SF	Volts	Model Number	Product Number	Notes (see page 442)	Approx Shpg Wght (lbs)	List Price	Mult Sym	
40	3600	286TS	93.6	1.25	230/460	SD2B40TS61Y	LM13969	H, N	389	\$3,293	LT-1E	
	3600	286TS	91.7	1.25	230/460	SD2P40TS61Y	LM13957	H, Q	389	2,798	LT-1C	
	3600	286T	91.7	1.25	230/460	SD2P40T61Y	LM18536	H, Q	389	2,798	LT-1C	
	1800	324T	93.6	1.25	230/460	SD4B40T61Y	LM13811	C, P	469	3,235	LT-1E	
	1800	324T	93.0	1.25	230/460	SD4P40T61Y	LM13751	C, H, M	469	2,798	LT-1C	
	1800	324TS	93.0	1.25	230/460	SD4P40TS61Y	LM18540	C, H, M	469	2,798	LT-1C	
	1200	364T	94.1	1.25	230/460	SD6B40T61Y	LM13924	C, P	712	5,428	LT-1E	
	1200	364T	93.0	1.25	230/460	SD6P40T61Y	LM14804	C, K, Q	712	4,374	LT-1C	
	50	3600	324TS	94.1	1.25	230/460	SD2B50TS61Y	LM13812	H, M	469	4,044	LT-1E
		3600	324TS	92.4	1.25	230/460	SD2P50TS61Y	LM13752	H, P	469	3,499	LT-1C
		3600	324T	92.4	1.25	230/460	SD2P50T61Y	LM20098	H, P	469	3,499	LT-1C
		1800	326T	95.0	1.25	230/460	SD4B50T61Y	LM13813	C, P	522	3,774	LT-1E
1800		326T	93.0	1.25	230/460	SD4P50T61Y	LM12831	C, H, M	522	3,165	LT-1C	
1800		326TS	93.0	1.25	230/460	SD4P50TS61Y	LM18542	C, H, M	522	3,165	LT-1C	
1200		365T	94.5	1.25	230/460	SD6B50T61Y	LM13927	K	763	6,127	LT-1E	
1200		365T	93.0	1.25	230/460	SD6P50T61Y	LM14807	C, K, Q	763	5,103	LT-1C	
60		3600	326TS	94.5	1.25	230/460	SD2B60TS61Y	LM13814	H, M	522	4,398	LT-1E
		3600	326TS	93.0	1.25	230/460	SD2P60TS61Y	LM13753	H, P	522	3,814	LT-1C
		3600	326T	93.0	1.25	230/460	SD2P60T61Y	LM18543	H, P	522	3,814	LT-1C
		1800	364T	95.0	1.25	230/460	SD4B60T61Y	LM14813	C, V	712	4,724	LT-1E
	1800	364T	93.6	1.25	230/460	SD4P60T61Y	LM14803	H, N	712	3,944	LT-1C	
	1800	364TS	93.6	1.25	230/460	SD4P60TS61Y	LM18725	H, N	712	3,944	LT-1C	
	1200	404T	94.5	1.25	230/460	SD6B60T61Y	LM13944	C, K, P	882	7,029	LT-1E	
	1200	404T	93.6	1.25	230/460	SD6P60T61Y	LM13934	K	882	6,156	LT-1D	
	75	3600	364TS	94.5	1.25	230/460	SD2B75TS61Y	LM14812	H	712	5,964	LT-1E
		3600	364TS	93.0	1.25	230/460	SD2P75TS61Y	LM14802	H, Q	712	5,144	LT-1C
		3600	364T	93.0	1.25	230/460	SD2P75T61Y	LM18731	H, Q	712	5,144	LT-1C
		1800	365T	95.0	1.25	230/460	SD4B75T61Y	LM14815	C, H, M	763	5,136	LT-1E
1800		365T	94.1	1.25	230/460	SD4P75T61Y	LM14806	H, Q	763	4,286	LT-1C	
1800		365TS	94.1	1.25	230/460	SD4P75TS61Y	LM18727	H, Q	763	4,286	LT-1C	
1200		405T	94.5	1.25	230/460	SD6B75T61Y	LM13947	P	958	9,012	LT-1E	
1200		405T	93.6	1.25	230/460	SD6P75T61Y	LM13937	K, Q	958	7,328	LT-1D	
100		3600	365TS	95.0	1.25	230/460	SD2B100TS61Y	LM14814	H, M	763	7,427	LT-1E
		3600	365TS	93.0	1.25	230/460	SD2P100TS61Y	LM14805	H, Q	763	6,223	LT-1C
		3600	365T	93.0	1.25	230/460	SD2P100T61Y	LM20096	H, Q	763	6,223	LT-1C
		1800	404T	95.4	1.25	230/460	SD4B100T61Y	LM13943	P	882	6,366	LT-1E
	1800	404T	94.1	1.25	230/460	SD4P100T61Y	LM13933	H, M	882	5,421	LT-1D	
	1800	404TS	94.1	1.25	230/460	SD4P100TS61Y	LM18729	H, M	882	5,421	LT-1D	
	1200	444T	95.4	1.15	460	SD6B100T64Y	LM13815	C, U	1277	10,332	LT-1E	
	1200	444T	94.1	1.15	460	SD6P100T64Y	LM13754	U	1277	8,182	LT-1D	
	125	3600	404TS	95.0	1.25	230/460	SD2B125TS61Y	LM13942	H, M	882	9,546	LT-1E
		3600	404TS	93.6	1.25	230/460	SD2P125TS61Y	LM13932	H, M	882	7,557	LT-1D
		3600	404T	93.6	1.25	230/460	SD2P125T61Y	LM20097	H, M	882	7,557	LT-1D
		1800	405T	95.4	1.25	230/460	SD4B125T61Y	LM13946	C, H, M	958	7,709	LT-1E
1800		405T	94.5	1.25	230/460	SD4P125T61Y	LM13936	C, H, N	958	6,242	LT-1D	
1800		405TS	94.5	1.25	230/460	SD4P125TS61Y	LM18748	C, H, N	958	6,242	LT-1D	
1200		445T	95.4	1.15	460	SD6B125T64Y	LM13816	C, U	1438	11,203	LT-1E	
1200		445T	94.1	1.15	460	SD6P125T64Y	LM13755	C, U	1938	8,871	LT-1D	
150		3600	405TS	95.4	1.25	230/460	SD2B150TS61Y	LM13945	H	958	11,315	LT-1E
		3600	405TS	93.6	1.25	230/460	SD2P150TS61Y	LM13935	H, N	958	8,773	LT-1D
		1800	444T	95.8	1.25	460	SD4B150T64Y	LM13817	C, M	1277	10,299	LT-1E
		1800	444T	95.0	1.25	460	SD4P150T64Y	LM13756	C, T	1277	8,402	LT-1D
	1800	444TS	95.0	1.25	460	SD4P150TS64Y	LM18752	C, T	1277	8,402	LT-1D	
	1200	447T	95.8	1.15	460	SD6B150T64Y	LM16236	C, T	1745	14,050	LT-1E	
	1200	445T	95.4	1.15	460	SD6B150T64Y	LM13818	C, U	1438	13,781	LT-1E	
	1200	445T	94.5	1.15	460	SD6P150T64Y	LM13757	C	1438	10,598	LT-1D	

Prices and data subject to change without notice.
+ Discontinued

Product numbers in red are STOCK items.

ODP
208, 230/460 & 460 VOLTS • 3-PHASE
FOOT MOUNT AND C-FACE
1/4 TO 500 HP



FOOT MOUNT (cont'd)

HP	SYN RPM	Frame	FL Nom Eff (%)	SF	Volts	Model Number	Product Number	Notes (see page 442)	Approx Shpg Wght (lbs)	List Price	Mult Sym	
200	3600	444TS	95.8	1.25	460	SD2B200TS64Y	LM13819	M	1277	\$13,867	LT-1E	
	3600	444TS	94.5	1.25	460	SD2P200TS64Y	LM13758	N	1277	10,981	LT-1D	
	1800	445T	96.2	1.25	460	SD4B200T64Y	LM13820	C, T	1438	12,667	LT-1E	
	1800	445T	95.0	1.25	460	SD4P200T64Y	LM13759	C, N	1449	9,837	LT-1D	
	1800	445TS	95.0	1.25	460	SD4P200TS64Y	LM18724	C, N	1449	9,837	LT-1D	
	1200	449T	95.8	1.15	460	SD6B200T64Y	LM16239	C, U	2112	16,503	LT-1E	
	1200	447T	95.4	1.15	460	SD6B200T64Y	LM13821	C, U	1745	15,716	LT-1E	
	1200	447T	94.5	1.15	460	SD6P200T64Y	LM13760	C	1745	12,445	LT-1D	
	1200	449T	94.5	1.15	460	SD6P200T64Y	LM16228	C, U	2112	12,445	LT-1D	
	250	3600	445TS	95.8	1.15	460	SD2B250TS64Y	LM13822	N	1438	18,491	LT-1E
3600		445TS	94.5	1.15	460	SD2P250TS64Y	LM13761	U	1438	14,788	LT-1D	
1800		445T	96.2	1.15	460	SD4B250T64Y	LM13823	N	1438	17,738	LT-1E	
1800		447T	96.2	1.15	460	SD4B250T64Y	LM16235	M	1745	18,082	LT-1E	
1800		445T	95.4	1.15	460	SD4P250T64Y	LM13762		1438	13,639	LT-1D	
1800		445TS	95.4	1.15	460	SD4P250TS64Y	LM15466		1438	13,639	LT-1D	
1800		445T	94.5	1.15	460	SD4S250T64Y	LM04479		1380	10,428	LT-1A	
1200		447T	95.4	1.00	460	SD6B250T64Y	LM13824		1745	21,159	LT-1E	
1200		449T	95.4	1.15	460	SD6B250T64Y	LM17958		2112	22,219	LT-1E	
1200		447T	95.4	1.00	460	SD6P250T64Y	LM13763		1745	16,758	LT-1D	
1200		449T	95.4	1.15	460	SD6P250T64Y	LM17955		2112	17,597	LT-1D	
300		3600	447TS	95.8	1.15	460	SD2B300TS64Y	LM13825		1745	21,783	LT-1E
		3600	447TS	95.0	1.15	460	SD2P300TS64Y	LM13764		1745	17,250	LT-1D
		1800	447T	96.2	1.15	460	SD4B300T64Y	LM13826	N	1745	18,359	LT-1E
	1800	449T	96.5	1.15	460	SD4B300T64Y	LM16238	N	2112	19,276	LT-1E	
	1800	447T	95.4	1.15	460	SD4P300T64Y	LM13765		1745	14,399	LT-1D	
	1800	449T	95.4	1.15	460	SD4P300T64Y	LM16227	N	2112	15,438	LT-1D	
	1800	447TS	95.4	1.15	460	SD4P300TS64Y	LM22758		1745	14,399	LT-1D	
	1200	449T	95.4	1.00	460	SD6B300T64Y	LM13827		2112	26,194	LT-1E	
	1200	449T	95.4	1.00	460	SD6P300T64Y	LM13766		2112	21,557	LT-1D	
	350	3600	447TS	95.8	1.15	460	SD2B350TS64Y	LM13828	N	1745	24,658	LT-1E
3600		449TS	95.8	1.15	460	SD2B350TS64Y	LM16237	N	2112	25,891	LT-1E	
3600		447TS	95.0	1.15	460	SD2P350TS64Y	LM13767	U	1745	19,527	LT-1D	
3600		449TS	95.0	1.15	460	SD2P350TS64Y	LM16226	U	2112	20,505	LT-1D	
1800		447T	96.2	1.15	460	SD4B350T64Y	LM13829		1745	23,056	LT-1E	
1800		449T	96.2	1.15	460	SD4B350T64Y	LM17957	U	2112	24,211	LT-1E	
1800		447T	95.0	1.00	460	SD4P350T64Y	LM13768		1745	16,570	LT-1D	
1800		449T	95.4	1.15	460	SD4P350T64Y	LM17954	U	2112	17,734	LT-1D	
1800		447TS	95.0	1.00	460	SD4P350TS64Y	LM15159		1745	16,570	LT-1D	
400		3600	449TS	96.2	1.15	460	SD2B400TS64Y	LM13831	N	2112	28,502	LT-1E
	3600	449TS	95.4	1.15	460	SD2P400TS64Y	LM13770		2112	22,089	LT-1D	
	1800	449T	95.8	1.15	460	SD4B400T64Y	LM13832	U	2112	27,659	LT-1E	
	1800	449T	95.4	1.15	460	SD4P400T64Y	LM13771		2112	20,701	LT-1D	
	1800	449TS	95.4	1.15	460	SD4P400TS64Y	LM22759		2112	20,701	LT-1D	
450	3600	449TS	95.8	1.15	460	SD2B450TS64Y	LM13833		2112	33,989	LT-1E	
	3600	449TS	95.8	1.00	460	SD2P450TS64Y	LM13772		2112	22,969	LT-1D	
	1800	449T	96.2	1.00	460	SD4B450T64Y	LM13834		2112	33,989	LT-1E	
	1800	449T	95.8	1.00	460	SD4P450T64Y	LM13773		2112	22,969	LT-1D	
500	3600	449TS	96.5	1.15	460	SD2B500TS64Y	LM23787		2147	41,122	LT-1E	

C-FACE WITH FEET

HP	SYN RPM	Frame	FL Nom Eff (%)	SF	Volts	Model Number	Product Number	Notes (see page 442)	Approx Shpg Wght (lbs)	List Price	Mult Sym
1/3	1800	56C	67.0	1.35	230/460	SRD4S0.33TC61	LM24277	H, W	15	\$263	LT-1A
1/2	3600	56C	66.0	1.25	230/460	SRD2S0.5TC61	LM24879	H, V	18	265	LT-1A
	1800	56C	70.0	1.25	230/460	SRD4S0.5TC61	LM24880	H, W	17	299	LT-1A
	1200	56C	68.0	1.25	230/460	SRD6S0.5TC61	LM24881	H	33	438	LT-1A

Prices and data subject to change without notice.

Product numbers in red are STOCK items.



ODP

**208, 230/460 & 460 VOLTS • 3-PHASE
FOOT MOUNT AND C-FACE
1/4 TO 500 HP**

C-FACE WITH FEET (cont'd)

HP	SYN RPM	Frame	FL Nom Eff (%)	SF	Volts	Model Number	Product Number	Notes (see page 442)	Approx Shpg Wght (lbs)	List Price	Mult Sym
3/4	3600	56C	74.0	1.25	230/460	SRD2S0.75TC61	LM24882	H, V	21	\$307	LT-1A
	1800	56C	75.5	1.25	230/460	SRD4S0.75TC61	LM24267	H, V	20	329	LT-1A
	1200	56C	76.5	1.15	230/460	SRD6S0.75TC61	LM24883	H, W	26	471	LT-1A
1	3600	56C	74.0	1.25	230/460	SRD2S1TC61	LM24884	H, W	24	350	LT-1A
	1800	56C	76.5	1.15	230/460	SRD4S1TC61	LM24346	H	22	340	LT-1A
	1800	143TC	82.5	1.25	230/460	SSD4P1TC61	LM24344	H, W	34	378	LT-1B
	1200	56HC	75.5	1.15	230/460	SRD6S1TC61	LM24885	H, W	29	451	LT-1A
	1200	145TC	80.0	1.25	230/460	SSD6P1TC61	LM24886	K, V	48	486	LT-1B
1 1/2	3600	56C	80.0	1.15	230/460	SRD2S1.5TC61	LM24887	H, W	23	387	LT-1A
	3600	143TC	82.5	1.25	230/460	SSD2P1.5TC61	LM24888		28	414	LT-1B
	1800	56HC	80.0	1.15	230/460	SRD4S1.5TC61	LM24889	H, W	28	358	LT-1A
	1800	145TC	84.0	1.15	230/460	SSD4P1.5TC61	LM24343	H, V	40	397	LT-1B
	1200	182TC	84.0	1.15	230/460	SSD6P1.5TC61	LM24890	H, V	80	585	LT-1B
2	3600	56HC	80.0	1.15	230/460	SRD2S2TC61	LM24891	H	25	427	LT-1A
	3600	145TC	84.0	1.25	230/460	SSD2P2TC61	LM24892	H	28	482	LT-1B
	1800	56HC	81.5	1.15	230/460	SRD4S2TC61	LM24345	H	36	425	LT-1A
	1800	145TC	84.0	1.25	230/460	SSD4P2TC61	LM24272	H, W	44	425	LT-1B
	1200	184TC	85.5	1.25	230/460	SSD6P2TC61	LM24893	H, V	74	574	LT-1B
3	3600	56HC	84.0	1.15	230/460	SRD2S3TC61	LM24894	H	33	427	LT-1A
	3600	145TC	84.0	1.25	230/460	SSD2P3TC61	LM24895	H, W	33	444	LT-1B
	1800	182TC	86.5	1.25	230/460	SSD4P3TC61	LM24896		83	499	LT-1B
	1200	213TC	86.5	1.25	230/460	SSD6P3TC61	LM24897	K, V	104	674	LT-1B
5	3600	182TC	85.5	1.15	230/460	SSD2P5TC61	LM24898	H, V	83	514	LT-1B
	1800	184TC	87.5	1.25	230/460	SSD4P5TC61	LM24206	H, Q	93	568	LT-1B
	1200	215TC	87.5	1.25	230/460	SSD6P5TC61	LM24899	K, V	135	865	LT-1B
7 1/2	3600	184TC	87.5	1.15	230/460	SSD2P7.5TC61	LM24205	J, Q	105	776	LT-1B
	1800	213TC	88.5	1.25	230/460	SSD4P7.5TC61	LM24240	H, V	115	733	LT-1B
	1200	254TC	88.5	1.25	230/460	SSD6P7.5TC61	LM24900	K, V	150	1,074	LT-1B
10	3600	213TC	88.5	1.25	230/460	SSD2P10TC61	LM24901	H, W	138	856	LT-1B
	1800	215TC	89.5	1.25	230/460	SSD4P10TC61	LM24902		138	901	LT-1B
	1200	256TC	90.2	1.25	230/460	SSD6P10TC61	LM24903	K	221	1,366	LT-1B
15	3600	215TC	90.2	1.15	230/460	SSD2P15TC61	LM24904	H	135	1,124	LT-1B
	1800	254TC	91.0	1.25	230/460	SSD4P15TC61	LM24905		215	1,185	LT-1B
	1200	284TC	91.7	1.25	230/460	CCD6B15TC61Y	LM31247		420	2,283	LT-1E
	1200	284TC	90.2	1.25	230/460	SD6P15TC61Y	LM17036	C, K, Q	355	1,921	LT-1C
20	3600	254TC	91.0	1.25	230/460	SSD2P20TC61	LM24906	H, V	161	1,419	LT-1B
	1800	256TC	91.0	1.25	230/460	SSD4P20TC61	LM24907	A	233	1,469	LT-1B
	1200	286TC	92.4	1.25	230/460	CCD6B20TC61Y	LM31248		462	2,713	LT-1E
	1200	286TC	91.0	1.25	230/460	SD6P20TC61Y	LM17039+	C, K, Q	396	2,261	LT-1C
	1200	286TC	90.1	1.25	230/460	CCD6P20TC61Y	LM29938		375	2,261	LT-1C
25	3600	256TC	91.0	1.25	230/460	SSD2P25TC61	LM24908	H, Q	207	1,711	LT-1B
	1800	284TC	93.0	1.25	230/460	CCD4B25TC61Y	LM31245		430	2,425	LT-1E
	1800	284TC	91.7	1.25	230/460	CCD4P25TC61Y	LM29580		350	2,026	LT-1C
	1800	284TSC	91.7	1.25	230/460	CCD4P24TSC61Y	LM29934		350	2,026	LT-1C
	1200	324TC	92.4	1.25	230/460	SD6B25TC61Y	LM14535	C, K, N	479	3,684	LT-1E
	1200	324TC	92.4	1.25	230/460	SD6P25TC61Y	LM13774	C	479	3,032	LT-1C
30	3600	284TSC	93.0	1.25	230/460	SD2B30TSC61Y	LM17382	H, M	355	2,776	LT-1E
	3600	284TSC	91.0	1.25	230/460	SD2P30TSC61Y	LM15548	H, Q	355	2,329	LT-1C
	1800	286TC	93.6	1.25	230/460	SD4B30TC61Y	LM31246		489	2,776	LT-1E
	1800	286TSC	92.4	1.25	230/460	CCD4P30TC61Y	LM29940		396	2,329	LT-1C
	1800	286TC	92.4	1.25	230/460	CCD4P30TSC61Y	LM29578		400	2,329	LT-1C
	1200	326TC	93.6	1.25	230/460	SD6B30TC61Y	LM13836	C, K, Q	532	4,229	LT-1E
	1200	326TC	92.4	1.25	230/460	SD6P30TC61Y	LM13775	C, K, Q	532	4,270	LT-1C

Prices and data subject to change without notice.
+ Discontinued



C-FACE WITH FEET (cont'd)

HP	SYN RPM	Frame	FL Nom Eff (%)	SF	Volts	Model Number	Product Number	Notes (see page 442)	Approx Shpg Wght (lbs)	List Price	Mult Sym
40	3600	286TSC	93.6	1.25	230/460	SD2B40TSC61Y	LM17384	H, N	396	\$3,577	LT-1E
	3600	286TSC	91.7	1.25	230/460	SD2P40TSC61Y	LM15595	H, Q	396	3,467	LT-1C
	1800	324TC	94.1	1.25	230/460	SD4B40TC61Y	LM13837	C, H, M	479	3,504	LT-1E
	1800	324TC	93.0	1.25	230/460	SD4P40TC61Y	LM13776	C, H, M	479	3,035	LT-1C
	1800	324TSC	93.0	1.25	230/460	SD4P40TSC61Y	LM16050	C, H, M	479	3,035	LT-1C
	1200	364TC	94.1	1.25	230/460	SD6B40TC61Y	LM15571	C, P	724	5,863	LT-1E
1200	364TC	93.0	1.25	230/460	SD6P40TC61Y	LM15559	C, K, Q	724	4,798	LT-1C	
50	3600	324TSC	94.1	1.25	230/460	SD2B50TSC61Y	LM13838	H, M	479	4,322	LT-1E
	3600	324TSC	92.4	1.25	230/460	SD2P50TSC61Y	LM13777	H, P	479	3,770	LT-1C
	1800	326TC	94.5	1.25	230/460	SD4B50TC61Y	LM13839	C, H, M	532	4,049	LT-1E
	1800	326TC	93.0	1.25	230/460	SD4P50TC61Y	LM13778	C, H, M	532	3,433	LT-1C
	1800	326TSC	93.0	1.25	230/460	SD4P50TSC61Y	LM16054	C, H, M	532	3,433	LT-1C
	1200	365TC	94.5	1.25	230/460	SD6B50TC61Y	LM15574	C, K, M	775	6,568	LT-1E
1200	365TC	93.0	1.25	230/460	SD6P50TC61Y	LM15561	C, K, Q	775	5,535	LT-1C	
60	3600	326TSC	94.5	1.25	230/460	SD2B60TSC61Y	LM13840	H	532	4,551	LT-1E
	3600	326TSC	93.0	1.25	230/460	SD2P60TSC61Y	LM13779	H, P	532	3,979	LT-1C
	1800	364TC	95.0	1.25	230/460	SD4B60TC61Y	LM15570	C, H, M, V	724	5,863	LT-1E
	1800	364TC	93.6	1.25	230/460	SD4P60TC61Y	LM15558	H, N	724	4,333	LT-1C
	1800	364TSC	93.6	1.25	230/460	SD4P60TSC61Y	LM16057	H, N	724	4,333	LT-1C
	1200	404TC	94.5	1.25	230/460	SD6B60TC61Y	LM17385	C, K, P	898	7,277	LT-1E
1200	404TC	93.6	1.25	230/460	SD6P60TC61Y	LM17043	K, Q	898	6,492	LT-1D	
75	3600	364TSC	95.0	1.25	230/460	SD2B75TSC61Y	LM15569	H, M	724	6,214	LT-1E
	3600	364TSC	93.0	1.25	230/460	SD2P75TSC61Y	LM15490	Q	724	5,427	LT-1C
	1800	365TC	95.0	1.25	230/460	SD4B75TC61Y	LM15573	C, H, M	775	5,420	LT-1E
	1800	365TC	94.1	1.25	230/460	SD4P75TC61Y	LM15560	H, Q	775	4,674	LT-1C
	1800	365TSC	94.1	1.25	230/460	SD4P75TSC61Y	LM16061	H, Q	775	4,674	LT-1C
	1200	405TC	95.4	1.25	230/460	SD6B75TC61Y	LM17386	K, P	974	9,293	LT-1E
1200	405TC	93.6	1.25	230/460	SD6P75TC61Y	LM17044	K, Q	974	7,642	LT-1D	
100	3600	365TSC	95.0	1.25	230/460	SD2B100TSC61Y	LM15572	H	775	7,808	LT-1E
	3600	365TSC	93.0	1.25	230/460	SD2P100TSC61Y	LM15062	H, Q	775	6,604	LT-1C
	1800	404TC	95.4	1.25	230/460	SD4B100TC61Y	LM17387	Q	898	6,819	LT-1E
	1800	404TC	94.1	1.25	230/460	SD4P100TC61Y	LM17045	H, M	898	5,874	LT-1D
	1800	404TSC	94.1	1.25	230/460	SD4P100TSC61Y	LM18751	H, M	898	5,874	LT-1D
	1200	444TC	95.4	1.15	460	SD6B100TC64Y	LM13791	C, U	1298	10,894	LT-1E
1200	444TC	94.1	1.15	460	SD6P100TC64Y	LM13780		1298	8,743	LT-1D	
125	3600	404TSC	95.0	1.25	230/460	SD2B125TSC61Y	LM17388	H, M	898	9,998	LT-1E
	3600	404TSC	93.6	1.25	230/460	SD2P125TSC61Y	LM17046	H, M	898	8,010	LT-1D
	1800	405TC	95.4	1.25	230/460	SD4B125TC61Y	LM17389	C, H, M	974	8,161	LT-1E
	1800	405TC	94.5	1.25	230/460	SD4P125TC61Y	LM17047	C, H, N	974	6,695	LT-1D
	1800	405TSC	94.5	1.25	230/460	SD4P125TSC61Y	LM18746	C, H, N	974	6,695	LT-1D
	1200	445TC	95.4	1.15	460	SD6B125TC64Y	LM13792	C	1459	11,765	LT-1E
150	3600	405TSC	95.4	1.25	230/460	SD2B150TSC61Y	LM17390	H	974	11,767	LT-1E
	3600	405TSC	93.6	1.25	230/460	SD2P150TSC61Y	LM17048	H, N	974	9,488	LT-1D
	1800	444TC	95.8	1.25	460	SD4B150TC64Y	LM13793	C, M	1298	11,169	LT-1E
	1800	444TC	95.0	1.25	460	SD4P150TC64Y	LM13782	C, T	1298	8,962	LT-1D
	1800	444TSC	95.0	1.25	460	SD4P150TSC64Y	LM18753	C, T	1298	8,962	LT-1D
	1200	445TC	95.4	1.15	460	SD6B150TC64Y	LM13794	C, U	1459	13,941	LT-1E
200	3600	444TSC	95.8	1.25	460	SD2B200TSC64Y	LM13795	M	1298	14,423	LT-1E
	3600	444TSC	94.5	1.25	460	SD2P200TSC64Y	LM13784	N	1298	11,537	LT-1D
	1800	445TC	96.2	1.25	460	SD4B200TC64Y	LM13796	C, M	1459	13,098	LT-1E
	1800	445TC	95.0	1.25	460	SD4P200TC64Y	LM13785	C, N	1470	10,386	LT-1D
	1800	445TSC	95.0	1.25	460	SD4P200TSC64Y	LM18754	C, N	1470	10,386	LT-1D
	1200	447TC	95.4	1.15	460	SD6B200TC64Y	LM13797	C, U	1766	16,472	LT-1E
1200	447TC	94.5	1.15	460	SD6P200TC64Y	LM13786		1766	13,168	LT-1D	

Prices and data subject to change without notice.
+ Discontinued



ODP

**208, 230/460 & 460 VOLTS • 3-PHASE
FOOT MOUNT AND C-FACE
1/4 TO 500 HP**

C-FACE WITH FEET (cont'd)

HP	SYN RPM	Frame	FL Nom Eff (%)	SF	Volts	Model Number	Product Number	Notes (see page 442)	Approx Shpg Wght (lbs)	List Price	Mult Sym	
250	3600	445TSC	95.8	1.15	460	SD2B250TSC64Y	LM13798	N	1459	\$19,045	LT-1E	
	3600	445TSC	94.5	1.15	460	SD2P250TSC64Y	LM13787		1459	15,348	LT-1D	
	1800	445TC	96.2	1.15	460	SD4B250TC64Y	LM13799	N	1459	18,289	LT-1E	
	1800	445TC	95.4	1.15	460	SD4P250TC64Y	LM13788		1459	14,182	LT-1D	
	1800	445TSC	95.4	1.15	460	SD4P250TSC64Y	LM20695		1459	14,182	LT-1D	
	1200	447TC	95.4	1.00	460	SD6B250TC64Y	LM13841		1766	21,760	LT-1E	
	1200	447TC	95.4	1.00	460	SD6P250TC64Y	LM13789		1766	17,360	LT-1D	
	300	3600	447TSC	95.8	1.15	460	SD2B300TSC64Y	LM13842	N	1766	22,383	LT-1E
		3600	447TSC	95.0	1.15	460	SD2P300TSC64Y	LM13790	U	1766	17,851	LT-1D
		1800	447TC	96.2	1.15	460	SD4B300TC64Y	LM13843	N	1766	18,959	LT-1E
1800		447TC	95.4	1.15	460	SD4P300TC64Y	LM15312	U	1766	14,994	LT-1D	
1200		449TC	95.4	1.00	460	SD6B300TC64Y	LM13844		2133	27,051	LT-1E	
1200		449TC	95.4	1.00	460	SD6P300TC64Y	LM13801		2133	21,339	LT-1D	
350		3600	447TSC	95.8	1.15	460	SD2B350TSC64Y	LM13845	N	1766	25,277	LT-1E
		3600	447TSC	95.0	1.15	460	SD2P350TSC64Y	LM13802	U	1766	20,145	LT-1D
	1800	447TC	96.2	1.15	460	SD4B350TC64Y	LM13846	U	1766	23,675	LT-1E	
	1800	447TC	95.4	1.15	460	SD4P350TC64Y	LM13803		1766	17,188	LT-1D	
	400	3600	449TSC	96.2	1.15	460	SD2B400TSC64Y	LM13848	N	2133	28,297	LT-1E
		3600	449TSC	95.4	1.15	460	SD2P400TSC64Y	LM13805		2133	22,064	LT-1D
1800		449TC	95.8	1.15	460	SD4B400TC64Y	LM13849	U	2133	27,476	LT-1E	
1800		449TC	95.4	1.15	460	SD4P400TC64Y	LM13806		2133	21,302	LT-1D	
450		3600	449TSC	95.8	1.15	460	SD2B450TSC64Y	LM13850		2133	34,572	LT-1E
		3600	449TSC	95.8	1.00	460	SD2P450TSC64Y	LM13807		2133	23,552	LT-1D
	1800	449TC	96.2	1.15	460	SD4B450TC64Y	LM13718		2133	34,571	LT-1E	
	1800	449TC	95.8	1.00	460	SD4P450TC64Y	LM13808		2133	23,552	LT-1D	
	500	3600	449TSC	96.5	1.15	460	SD2B500TSC64Y	TBD		2170	41,706	LT-1E

C-FACE FOOTLESS

HP	SYN RPM	Frame	FL Nom Eff (%)	SF	Volts	Model Number	Product Number	Notes (see page 442)	Approx Shpg Wght (lbs)	List Price	Mult Sym
1/3	3600	56C	66.0	1.35	230/460	SRD2S0.33TCN61	LM24909	H, V	19	\$222	LT-1A
	1800	56C	67.0	1.35	230/460	SRD4S0.33TCN61	LM24910	H, W	15	244	LT-1A
1/2	3600	56C	66.0	1.25	230/460	SRD2S0.5TCN61	LM24911	H, V	19	234	LT-1A
	1800	56C	70.0	1.25	230/460	SRD4S0.5TCN61	LM24912	H, W	17	281	LT-1A
	1200	56C	68.0	1.25	230/460	SRD6S0.5TCN61	LM24913	H	21	408	LT-1A
3/4	3600	56C	74.0	1.25	230/460	SRD2S0.75TCN61	LM24914	H, V	20	277	LT-1A
	1800	56C	75.5	1.15	230/460	SRD4S0.75TCN61	LM24915		20	314	LT-1A
1	3600	56C	74.0	1.25	230/460	SRD2S1TCN61	LM24916		22	319	LT-1A
	1800	56C	76.5	1.15	230/460	SRD4S1TCN61	LM24917	H	22	340	LT-1A
	1800	143TC	77.0	1.15	230/460	SSD4S1TCN61	LM24918	H, W	27	340	LT-1A
1 1/2	3600	56C	80.0	1.15	230/460	SRD2S1.5TCN61	LM24919	H, W	23	369	LT-1A
	1800	56HC	80.0	1.15	230/460	SRD4S1.5TCN61	LM24160	H, W	27	397	LT-1A
	1800	145TC	80.0	1.15	230/460	SSD4S1.5TCN61	LM24920	H, W	29	397	LT-1A
2	3600	56HC	80.0	1.15	230/460	SRD2S2TCN61	LM24921	H	25	426	LT-1A
	1800	56HC	81.5	1.15	230/460	SRD4S2TCN61	LM24131	H	33	426	LT-1A
	1800	145TC	81.5	1.15	230/460	SSD4S2TCN61	LM24922	H	35	426	LT-1A
3	3600	56HC	84.0	1.15	230/460	SRD2S3TCN61	LM24923	H	31	455	LT-1A
	3600	145TC	84.0	1.15	230/460	SSD2S3TCN61	LM24924	H	33	455	LT-1A
	1800	182TC	81.5	1.15	230/460	SSD4S3TCN61	LM24925	H	63	443	LT-1A
5	1800	184TC	85.5	1.25	230/460	SSD4S5TCN61	LM24926	H, W	84	485	LT-1A
	1800	184TC	87.5	1.25	230/460	SSD4P5TCN61	LM24234	H, U	93	545	LT-1B
7 1/2	1800	213TC	84.0	1.15	230/460	SSD4S7.5TCN61	LM24927	H, Y	95	687	LT-1A
10	1800	215TC	87.5	1.15	230/460	SSD4S10TCN61	LM24928	H, W	128	865	LT-1A

Prices and data subject to change without notice.