

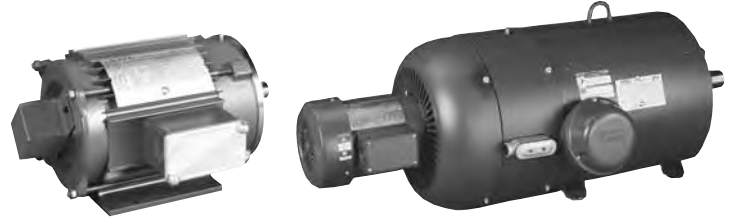
# TOTALLY ENCLOSED • 0 TO 60 HZ CONSTANT TORQUE INVERTER DUTY CTAC®



230/460 & 460 VOLTS • 3-PHASE  
FOOT MOUNT & C-FACE  
1/3 TO 200 HP

## Features:

- 2000:1 constant torque speed range of 0-60 Hz at continuous duty (range on RF models is 6-60Hz).
- Variable torque speed range of 0-60 Hz.
- Constant horsepower speed range of 2x base speed (56-256T frames) or 1.5x base speed\* (284T-445T frames).
- Wider speed ranges possible on intermittent duty
- Ultimate Spike Defense™ Insulation System
- Ideally suited for IGBT power
- 1.00 SF, 40°C ambient on PWM waveform
- C-Face standard on frames 56-256T
- Precision dynamic balanced rotor assembly
- Over temperature protection (Class F thermostat)
- Provision for mounting feedback device - Q10 models
- TEBC - 3 phase blower motor standard
- Warranty on CTAC motor, 42 months from date of manufacture and 36 months from date of installation which ever period expires first.
- Warranty on TEBC blower motor 30 months from date of manufacture and 24 months from date of installation which ever period expires first.
- Made In U.S.A.



## Applications:

Suitable for use in extruders, conveyors, machine tools and other process industries with constant torque, variable speed loads.

In a very small percentage of installations, bearing currents can develop in motors operated by PWM-based adjustable-speed drives. Contact your local sales office to review ways of eliminating bearing currents.

\* Actual speed not to exceed "RPM MAX" listed for specific motor.

## C-FACE WITH FEET (56-256T)

HP	SYN RPM @ 60 Hz	RPM Max	Frame	Enclosure	Volts	Model Number	Product Number	Notes (see page 306)	Approx Shpg Wght (lbs)	List Price	Mult Sym
1/3	1800	4000	56C	TEFC	230/460	SRF4S0.33TC61Q20	LM10336		26	\$445	LS-1
1/2	1800	4000	56C	TEFC	230/460	SRF4S0.5TC61Q20	LM10337		28	519	LS-1
	1200	4000	56HC	TEFC	230/460	SRF6S0.5TC61Q20	LM10338		41	609	LS-1
3/4	1800	4000	56HC	TEFC	230/460	SRF4S0.75TC61Q20	LM10339		36	578	LS-1
1	1800	4000	56HC	TEFC	230/460	SRF4S1TC61Q20	LM10340		41	1113	LS-1
	1800	5000	145TC	TENV	230/460	SSN4S1TC61Q10	LM26359		62	1127	LS-1
	1200	4800	182TC	TENV	230/460	AAN6S1TC61Q10	LM06103		78	1276	LS-1
	900	4800	184TC	TENV	230/460	AAN8S1TC61Q10	LM06105		90	1591	LS-1
1 1/2	1800	5000	145TC	TENV	230/460	SSN4S1.5TC61Q10	LM26233		65	1252	LS-1
	1200	4800	184TC	TENV	230/460	AAN6S1.5TC61Q10	LM06109		90	1376	LS-1
	900	4600	213TC	TENV	230/460	AN8S1.5TC61Q10	LM06111		121	2223	LS-1
2	1800	4800	182TC	TENV	230/460	AAN4S2TC61Q10	LM06113		74	1358	LS-1
	1200	4600	213TC	TENV	230/460	AN6S2TC61Q10	LM06115		121	1883	LS-1
	900	4600	215TC	TENV	230/460	AN8S2TC61Q10	LM06117		121	2504	LS-1

Prices and data subject to change without notice.

Product numbers in red are STOCK items.



# TOTALLY ENCLOSED • 0 TO 60 HZ CONSTANT TORQUE INVERTER DUTY CTAC®

230/460 & 460 VOLTS • 3-PHASE  
FOOT MOUNT & C-FACE  
1/3 TO 200 HP

## C-FACE WITH FEET (56-256T) & FOOT MOUNT (284T-445T)

HP	SYN RPM @ 60 Hz	RPM Max	Frame	Enclosure	Volts	Model Number	Product Number	Notes (see page 306)	Approx Shpg Wght (lbs)	List Price	Mult Sym
3	1800	4800	184TC	TENV	230/460	AAN4S3TC61Q10	LM06119		86	\$1580	LS-1
	1200	4600	215TC	TENV	230/460	AN6S3TC61Q10	LM06121		135	2520	LS-1
	900	4400	254TC	TENV	230/460	AN8S3TC61Q10	LM06123		186	4457	LS-1
5	1800	4600	213TC	TENV	230/460	AN4S5TC61Q10	LM06125		115	3467	LS-1
	1200	4400	254TC	TENV	230/460	AN6S5TC61Q10	LM06127		200	4042	LS-1
	900	4400	256TC	TENV	230/460	AN8S5TC61Q10	LM06129		219	5210	LS-1
7 1/2	1800	4600	215TC	TENV	230/460	AN4S7.5TC61Q10	LM06131		115	2417	LS-1
	1200	4400	256TC	TENV	230/460	AN6S7.5TC61Q10	LM06133		219	4638	LS-1
10	1800	4400	256TC	TENV	230/460	AN4S10TC61Q10	LM06135		211	2615	LS-1
15	1200	4200	284T	TEBC	230/460	SB6H15T61Q10	LM03140		350	7156	LS-1
20	1200	4200	286T	TEBC	230/460	SB6H20T61Q10	LM03156		420	8052	LS-1
25	1800	4200	284T	TEBC	230/460	SB4H25T61Q10	LM03188		350	4540	LS-1
	1200	4000	324T	TEBC	230/460	SB6H25T61Q10	LM03204		490	9254	LS-1
30	1800	4200	286T	TEBC	230/460	SB4H30T61Q10	LM03236		420	5218	LS-1
	1200	4000	326T	TEBC	230/460	SB6H30T61Q10	LM03252		550	10285	LS-1
40	1800	4000	324T	TEBC	230/460	SB4H40T61Q10	LM03284		420	7029	LS-1
	1200	3800	364T	TEBC	230/460	SB6H40T61Q10	LM03300		670	12314	LS-1
50	1800	4000	326T	TEBC	230/460	SB4H50T61Q10	LM03332		490	7893	LS-1
	1200	3800	365T	TEBC	230/460	SB6H50T61Q10	LM03348		740	15056	LS-1
60	1800	3800	364T	TEBC	230/460	SB4H60T61Q10	LM03376		670	9257	LS-1
	1200	3600	404T	TEBC	230/460	SB6H60T61Q10	LM03396		880	15806	LS-1
75	1800	3800	365T	TEBC	230/460	SB4H75T61Q10	LM03424		740	10909	LS-1
	1200	3600	405T	TEBC	230/460	SB6H75T61Q10	LM03444		1000	19894	LS-1
100	1800	3600	405T	TEBC	230/460	SB4H100T61Q10	LM03472		1000	16496	LS-1
	1200	3000	444T	TEBC	460	SB6H100T64YQ10	LM03490		1290	21061	LS-1
125	1800	3000	444T	TEBC	460	SB4H125T64YQ10	LM03516		1290	21935	LS-1
	1200	3000	445T	TEBC	460	SB6H125T64YQ10	LM03536		1480	26845	LS-1
150	1800	3000	445T	TEBC	460	SB4H150T64YQ10	LM03564		1480	26144	LS-1
200	1800	3000	445T	TEBC	460	SB4H200T64YQ10	LM03596		1480	27645	LS-1

Prices and data subject to change without notice.

Product numbers in red are STOCK items.

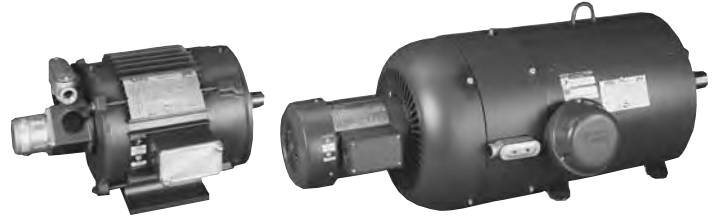
# TOTALLY ENCLOSED • 0 TO 60 HZ CONSTANT TORQUE VECTOR DUTY CTAC®



FOOT MOUNT & C-FACE  
1/3 TO 200 HP

## Features:

- 2000:1 constant torque speed range of 0-60 Hz at continuous duty with closed-loop drive.
- Variable torque speed range of 0-60 Hz.
- Constant horsepower speed range of 2x base speed (56-256T frames) or 1.5x base speed\* (284T-445T frames).
- Ultimate Spike Defense™ Insulation System
- Ideally suited for IGBT power
- 1.00 SF, 40°C ambient on PWM waveform
- C-Face standard on frames 56-256T
- Precision dynamic balanced rotor assembly
- Over temperature protection (Class F thermostat)
- 1024 ppr encoder with differential line driver
- Separate terminal box or conduit with terminal block for feedback termination
- TEBC – 3 phase blower motor standard
- Warranty: (CTAC motor) 42 months from date of manufacture and 36 months from date of installation which ever period expires first. Feedback device and blower motor (TEBC) 30 months from date of manufacture and 24 months from date of installation which ever period expires first.
- Made In U.S.A.



## Applications:

For use in demanding industrial applications where premium construction and performance are required. Suitable for use in extruders, conveyors, machine tools and other process industries with constant torque, variable speed loads.

In a very small percentage of installations, bearing currents can develop in motors operated by PWM-based adjustable-speed drives. Contact your local sales office to review ways of eliminating bearing currents.

\* Actual speed not to exceed "RPM MAX" listed for specific motor.

## C-FACE WITH FEET (56-256T)

HP	SYN RPM @ 60 Hz	RPM Max	Frame	Enclosure	Volts	Model Number	Product Number	Notes (see page 306)	Approx Shpg Wght (lbs)	List Price	Mult Sym
1/3	1800	5000	56C	TENV	230/460	SRN4S0.33TC61Q15	LM10346		43	\$1681	LS-1
1/2	1800	5000	56C	TENV	230/460	SRN4S0.5TC61Q15	LM10347		43	1756	LS-1
	1200	5000	56HC	TENV	230/460	SRN6S0.5TC61Q15	LM10348		43	1844	LS-1
3/4	1800	5000	56HC	TENV	230/460	SRN4S0.75TC61Q15	LM10349		54	1816	LS-1
1	1800	5000	56HC	TENV	230/460	SRN4S1TC61Q15	LM10350		54	2476	LS-1
	1800	5000	145TC	TENV	230/460	SSN4S1TC61Q15	LM26109		82	2476	LS-1
	1200	4800	182TC	TENV	230/460	AAN6S1TC61Q15	LM03973		98	3033	LS-1
	900	4800	184TC	TENV	230/460	AAN8S1TC61Q15	LM03975		110	2974	LS-1
1 1/2	1800	5000	145TC	TENV	230/460	SSN4S1.5TC61Q15	LM26278		85	2660	LS-1
	1200	4800	184TC	TENV	230/460	AAN6S1.5TC61Q15	LM03981		110	2762	LS-1
	900	4600	213TC	TENV	230/460	AN8S1.5TC61Q15	LM03983		141	3607	LS-1
2	1800	4800	182TC	TENV	230/460	AAN4S2TC61Q15	LM03987		98	2741	LS-1
	1200	4600	213TC	TENV	230/460	AN6S2TC61Q15	LM03989		141	3270	LS-1
	900	4600	215TC	TENV	230/460	AAN8S2TC61Q15	LM03991		141	3889	LS-1

Prices and data subject to change without notice.

Product numbers in red are STOCK items.



# TOTALLY ENCLOSED • 0 TO 60 HZ CONSTANT TORQUE VECTOR DUTY CTAC®

FOOT MOUNT & C-FACE  
1/3 TO 200 HP

## C-FACE WITH FEET (56-256T) & FOOT MOUNT (284T-445T)

HP	SYN RPM @ 60 Hz	RPM Max	Frame	Enclosure	Volts	Model Number	Product Number	Notes (see page 306)	Approx Shpg Wght (lbs)	List Price	Mult Sym
3	1800	4800	184TC	TENV	230/460	AAN4S3TC61Q15	LM03995		110	\$2965	LS-1
	1200	4600	215TC	TENV	230/460	AN6S3TC61Q15	LM03997		155	3904	LS-1
	900	4400	254TC	TENV	230/460	AN8S3TC61Q15	LM03999		206	5841	LS-1
5	1800	4600	213TC	TENV	230/460	AAN4S5TC61Q15	LM04003		115	3198	LS-1
	1200	4400	254TC	TENV	230/460	AN6S5TC61Q15	LM04005		220	5427	LS-1
	900	4400	256TC	TENV	230/460	AN8S5TC61Q15	LM04007		239	6597	LS-1
7 1/2	1800	4600	215TC	TENV	230/460	AN4S7.5TC61Q15	LM31463		155	3802	LS-1
	1200	4400	256TC	TENV	230/460	AN6S7.5TC61Q15	LM04013		239	6024	LS-1
10	1800	4400	256TC	TENV	230/460	AN4S10TC61Q15	LM30572		235	4000	LS-1
15	1200	4200	284T	TEBC	230/460	CCB6S15T61Q15	LM31961		490	8518	LS-1
20	1200	4200	286T	TEBC	230/460	SB6H20T61Q15	LM03157		420	9413	LS-1
25	1800	4200	284T	TEBC	230/460	SB4H25T61Q15	LM03189		350	5901	LS-1
	1200	4000	324T	TEBC	230/460	SB6H25T61Q15	LM03205		490	10617	LS-1
30	1800	4200	286T	TEBC	230/460	SB4H30T61Q15	LM03237		420	6579	LS-1
	1200	4000	326T	TEBC	230/460	SB6H30T61Q15	LM03253		550	11647	LS-1
40	1800	4000	324T	TEBC	230/460	SB4H40T61Q15	LM03285		550	8391	LS-1
	1200	3800	364T	TEBC	230/460	SB6H40T61Q15	LM03301		670	13674	LS-1
50	1800	4000	326T	TEBC	230/460	SB4H50T61Q15	LM03333		550	9256	LS-1
	1200	3800	365T	TEBC	230/460	SB6H50T61Q15	LM03349		740	16416	LS-1
60	1800	3800	364T	TEBC	230/460	SB4H60T61Q15	LM03377		690	10620	LS-1
	1200	3600	404T	TEBC	230/460	SB6H60T61Q15	LM03397		1000	17169	LS-1
75	1800	3800	365T	TEBC	230/460	SB4H75T61Q15	LM03425		740	12273	LS-1
	1200	3600	405T	TEBC	230/460	SB6H75T61Q15	LM03445		1000	21257	LS-1
100	1800	3600	405T	TEBC	230/460	SB4H100T61Q15	LM03473		1000	17857	LS-1
	1200	3000	444T	TEBC	460	SB6H100T64YQ15	LM03491		1290	22425	LS-1
125	1800	3000	444T	TEBC	460	SB4H125T64YQ15	LM03517		1290	23296	LS-1
	1200	3000	445T	TEBC	460	SB6H125T64YQ15	LM03537		1480	28209	LS-1
150	1800	3000	445T	TEBC	460	SB4H150T64YQ15	LM03565		1490	27508	LS-1
200	1800	3000	445T	TEBC	460	SB4H200T64YQ15	LM03597		1500	29005	LS-1

Prices and data subject to change without notice.

Product numbers in red are STOCK items.