

# HARSH ENVIRONMENTS WASH-THRU™ MOTORS

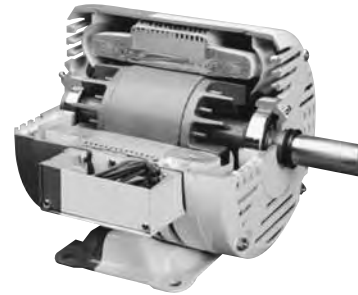


240/460 VOLTS • 3-PHASE  
FOOT MOUNT & C-FACE

Lincoln's revolutionary Wash-Thru™ design utilizes **Pressure Encapsulation Technology** for unbeatable winding protection and unsurpassed motor life in many harsh environments. Wash-Thru™ motors can provide an improvement in plant efficiency and a reduction in maintenance costs due to an increase in process up-time.

#### Features:

- Pressure Encapsulation Technology – thermosetting polyester-based resin is forced into and around the motor windings impregnating and encapsulating coil noses and filling stator slots. A silicone-based coating on stator bore surfaces completes the process. The result is unbeatable protection from excessive moisture, chemical action and vibration.
- Full length 303 stainless steel shaft.
- Double-sealed bearings and v-ring shaft slinger.
- Laser etched, stainless steel nameplate for permanent motor identification.
- Premium Class F Insulation system
- FDA approved white finish coat
- Warranty (sine-wave and inverter power) – 18 months from date of manufacture and 12 months from date of installation which ever period expires first.
- Made in U.S.A.



Cutaway model shows encapsulated windings.

#### Applications:

Exceptional choice for demanding uses in poultry, seafood, meat and other food processing plants. Other applications include areas where a high degree of dust, moisture, and vibration exist.

#### Supporting Information:

Dimensions: 56-56H-143T – Contact your local sales office  
Performance: Contact your local sales office

Speed ranges (continuous duty) on variable-frequency electronic speed controls (inverters):

- Constant Torque: 45 to 60 Hz
- Variable Torque: 6 to 60 Hz

## FOOT MOUNT

HP	SYN RPM	Frame	FL Nom Eff (%)	SF	Volts	Model Number	Product Number	Notes (see page 306)	Approx Shpg Wght (lbs)	List Price	Mult Sym
1/2	3600	56	70.0	1.00	230/460	SREW2S0.5T61	LM21031		30	\$767	LT-1A
	1800	56	68.0	1.00	230/460	SREW4S0.5T61	LM20655		26	827	LT-1A
	1200	56	70.0	1.00	230/460	SREW6S0.5T61	LM25419		28	1027	LT-1A
3/4	3600	56	74.0	1.00	230/460	SREW2S0.75T61	LM21034		30	814	LT-1A
	1800	56	75.5	1.00	230/460	SREW4S0.75T61	LM20658		24	858	LT-1A
	1200	56	77.5	1.00	230/460	SREW6S0.75T61	LM22163		33	1052	LT-1A
1	3600	56	78.5	1.00	230/460	SREW2S1T61	LM21037		30	885	LT-1A
	1800	56	77.0	1.00	230/460	SREW4S1T61	LM21061		30	898	LT-1A
	1800	143T	77.0	1.00	230/460	SSEW4S1T61	LM20667		35	898	LT-1A
	1200	56H	72.0	1.00	230/460	SREW6S1T61	LM25420		34	1159	LT-1A
	1200	145T	75.5	1.00	230/460	SSEW6S1T61	LM24280		34	1160	LT-1A
1 1/2	3600	K56	78.5	1.00	230/460	SREW2S1.5T61	LM21040		30	944	LT-1A
	3600	143T	78.5	1.00	230/460	SREW2S1.5T61	LM21046		35	981	LT-1A
	1800	56H	80.0	1.00	230/460	SREW4S1.5T61	LM21062		30	936	LT-1A
	1800	145T	80.0	1.00	230/460	SSEW4S1.5T61	LM20670		35	936	LT-1A
	1200	182T	81.5	1.00	230/460	SSEW6S1.5T61	LM25421		35	1691	LT-1A
2	3600	56H	78.5	1.00	230/460	SREW2S2T61	LM21043		34	1051	LT-1A
	3600	145T	82.5	1.00	230/460	SSEW2S2T61	LM21049		35	1094	LT-1A
	1800	56H	81.5	1.00	230/460	SREW4S2T61	LM21063		34	1148	LT-1A
	1800	145T	81.5	1.00	230/460	SSEW4S2T61	LM20673		35	1120	LT-1A
	1200	184T	80.0	1.00	230/460	SSEW6S2T61	LM25422		70	1868	LT-1A

Prices and data subject to change without notice.

Product numbers in red are STOCK items.



# HARSH ENVIRONMENTS WASH-THRU™ MOTORS

240/460 VOLTS • 3-PHASE  
FOOT MOUNT & C-FACE

## FOOT MOUNT (cont'd)

HP	SYN RPM	Frame	FL Nom Eff (%)	SF	Volts	Model Number	Product Number	Notes (see page 306)	Approx Shpg Wght (lbs)	List Price	Mult Sym
3	3600	182T	81.5	1.00	230/460	SSEW2S3T61	<b>LM21052</b>		64	\$1306	LT-1A
	1800	182T	89.5	1.00	230/460	SSEW4S3T61	<b>LM20676</b>		64	1462	LT-1A
	1200	213T	78.5	1.00	230/460	SSEW6S3T61	<b>LM25423</b>		109	2345	LT-1A
5	3600	184T	81.5	1.00	230/460	SSEW2S5T61	<b>LM21055</b>		70	1849	LT-1A
	1800	184T	87.5	1.00	230/460	SSEW4S5T61	<b>LM20679</b>		70	1663	LT-1A
	1200	215T	82.5	1.00	230/460	SSEW6S5T61	<b>LM25424</b>		125	3087	LT-1A
7 1/2	3600	213T	81.5	1.00	230/460	SSEW2S7.5T61	<b>LM22423</b>		109	2301	LT-1A
	1800	213T	81.5	1.00	230/460	SSEW4S7.5T61	<b>LM22435</b>		109	2116	LT-1A
	1200	254T	86.5	1.00	230/460	SSEW6S7.5T61	<b>LM23931</b>		208	4577	LT-1A
10	3600	215T	84.0	1.00	230/460	SSEW2S10T61	<b>LM22426</b>		125	2746	LT-1A
	1800	215T	84.0	1.00	230/460	SSEW4S10T61	<b>LM22438</b>		125	2417	LT-1A

## C-FACE WITH FEET

HP	SYN RPM	Frame	FL Nom Eff (%)	SF	Volts	Model Number	Product Number	Notes (see page 306)	Approx Shpg Wght (lbs)	List Price	Mult Sym
1/2	3600	56C	70.0	1.00	230/460	SREW2S0.5TC61	<b>LM21032</b>		35	\$808	LT-1A
	1800	56C	68.0	1.00	230/460	SREW4S0.5TC61	<b>LM20656</b>		35	869	LT-1A
3/4	3600	56C	74.0	1.00	230/460	SREW2S0.75TC61	<b>LM21035</b>		35	856	LT-1A
	1800	56C	75.5	1.00	230/460	SREW4S0.75TC61	<b>LM20659</b>		35	899	LT-1A
1	3600	56C	78.5	1.00	230/460	SREW2S1TC61	<b>LM21038</b>		35	929	LT-1A
	1800	56C	77.0	1.00	230/460	SREW4S1TC61	<b>LM20661</b>		35	938	LT-1A
	1800	143TC	77.0	1.00	230/460	SSEW4S1TC61	<b>LM20668</b>		40	938	LT-1A
1 1/2	3600	56C	81.5	1.00	230/460	SREW2S1.5TC61	<b>LM21041</b>		35	987	LT-1A
	3600	143TC	78.5	1.00	230/460	SSEW2S1.5TC61	<b>LM21047</b>		40	1021	LT-1A
	1800	56HC	80.0	1.00	230/460	SREW4S1.5TC61	<b>LM20663</b>		35	979	LT-1A
	1800	145TC	80.0	1.00	230/460	SSEW4S1.5TC61	<b>LM20671</b>		40	979	LT-1A
2	3600	56HC	82.5	1.00	230/460	SREW2S2TC61	<b>LM21044</b>		40	1092	LT-1A
	3600	145TC	78.5	1.00	230/460	SSEW2S2TC61	<b>LM21050</b>		40	1135	LT-1A
	1800	56HC	81.5	1.00	230/460	SREW4S2TC61	<b>LM20665</b>		40	1189	LT-1A
	1800	145TC	81.5	1.00	230/460	SSEW4S2TC61	<b>LM20674</b>		40	1162	LT-1A
3	3600	182TC	81.5	1.00	230/460	SSEW2S3TC61	<b>LM21053</b>		73	1369	LT-1A
	1800	182TC	81.5	1.00	230/460	SSEW4S3TC61	<b>LM20677</b>		73	1526	LT-1A
5	3600	184TC	81.5	1.00	230/460	SSEW2S5TC61	<b>LM21056</b>		79	1911	LT-1A
	1800	184TC	81.5	1.00	230/460	SSEW4S5TC61	<b>LM20680</b>		79	1726	LT-1A
7 1/2	3600	213TC	81.5	1.00	230/460	SSEW2S7.5TC61	<b>LM22424</b>		121	2374	LT-1A
	1800	213TC	81.5	1.00	230/460	SSEW4S7.5TC61	<b>LM22436</b>		121	2189	LT-1A
10	3600	215TC	84.0	1.00	230/460	SSEW2S10TC61	<b>LM22427</b>		139	2818	LT-1A
	1800	215TC	84.0	1.00	230/460	SSEW4S10TC61	<b>LM22439</b>		139	2490	LT-1A

Prices and data subject to change without notice.

Product numbers in red are STOCK items.

# HARSH ENVIRONMENTS WASH-THRU™ MOTORS



240/460 VOLTS • 3-PHASE  
FOOT MOUNT & C-FACE

## C-FACE FOOTLESS

HP	SYN RPM	Frame	FL Nom Eff (%)	SF	Volts	Model Number	Product Number	Notes (see page 306)	Approx Shpg Wght (lbs)	List Price	Mult Sym
1/2	3600	56C	70.0	1.00	230/460	SREW2S0.5TCN61	<b>LM21033</b>		35	\$808	LT-1A
	1800	56C	74.0	1.00	230/460	SREW4S0.5TCN61	<b>LM20657</b>		35	869	LT-1A
3/4	3600	56C	74.0	1.00	230/460	SREW2S0.75TCN61	<b>LM21036</b>		35	856	LT-1A
	1800	56C	77.0	1.00	230/460	SREW4S0.75TCN61	<b>LM20660</b>		35	899	LT-1A
1	3600	56C	75.5	1.00	230/460	SREW2S1TCN61	<b>LM21039</b>		35	927	LT-1A
	1800	56C	78.5	1.00	230/460	SREW4S1TCN61	<b>LM20662</b>		35	938	LT-1A
	1800	143TC	78.5	1.00	230/460	SSEW4S1TCN61	<b>LM20669</b>		40	938	LT-1A
1 1/2	3600	56C	78.5	1.00	230/460	SREW2S1.5TCN61	<b>LM21042</b>		35	987	LT-1A
	3600	143TC	78.5	1.00	230/460	SSEW2S1.5TCN61	<b>LM21048</b>		40	1021	LT-1A
	1800	56HC	80.0	1.00	230/460	SREW4S1.5TCN61	<b>LM20664</b>		35	979	LT-1A
	1800	145TC	80.0	1.00	230/460	SSEW4S1.5TCN61	<b>LM20672</b>		40	979	LT-1A
2	3600	56HC	78.5	1.00	230/460	SREW2S2TCN61	<b>LM21045</b>		40	1092	LT-1A
	3600	145TC	78.5	1.00	230/460	SSEW2S2TCN61	<b>LM21051</b>		40	1135	LT-1A
	1800	56HC	81.5	1.00	230/460	SREW4S2TCN61	<b>LM20666</b>		40	1189	LT-1A
	1800	145TC	81.5	1.00	230/460	SSEW4S2TCN61	<b>LM20675</b>		40	1161	LT-1A
3	3600	182TC	81.5	1.00	230/460	SSEW2S3TCN61	<b>LM21054</b>		73	1369	LT-1A
	1800	182TC	81.5	1.00	230/460	SSEW4S3TCN61	<b>LM20678</b>		73	1526	LT-1A
5	3600	184TC	81.5	1.00	230/460	SSEW2S5TCN61	<b>LM21057</b>		79	1911	LT-1A
	1800	184TC	81.5	1.00	230/460	SSEW4S5TCN61	<b>LM20681</b>		79	1726	LT-1A
7 1/2	3600	213TC	81.5	1.00	230/460	SSEW2S7.5TCN61	<b>LM22425</b>		121	2374	LT-1A
	1800	213TC	81.5	1.00	230/460	SSEW4S7.5TCN61	<b>LM22437</b>		121	2189	LT-1A
10	3600	215TC	84.0	1.00	230/460	SSEW2S10TCN61	<b>LM22428</b>		139	2818	LT-1A
	1800	215TC	84.0	1.00	230/460	SSEW4S10TCN61	<b>LM22440</b>		139	2490	LT-1A

Prices and data subject to change without notice.

Product numbers in red are STOCK items.