

2230MKII / 2330MKII

DRIVES FOR EVERY INDUSTRY

Single Phase DC Drives

FEATURES

- ▶ AC Line Fusing
- ▶ Chassis and Nema 4
- ▶ UL, cUL
- ▶ Dual Field Supply
- ▶ Tachometer or Voltage Feedback
- ▶ Dual AC Supply 120/240
- ▶ Speed or Torque Control
- ▶ MOV and DV / DT Protection
- ▶ Overload, 150% 1 Minute
- ▶ Isolator Regulator
- ▶ NEC and NEMA Compliance
- ▶ Speed and Current Outputs (2230MKII + 2610MKII only)

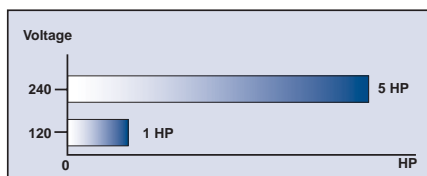
TWO YEAR WARRANTY
if purchased with motor



2330 MKII Non-REGENERATIVE

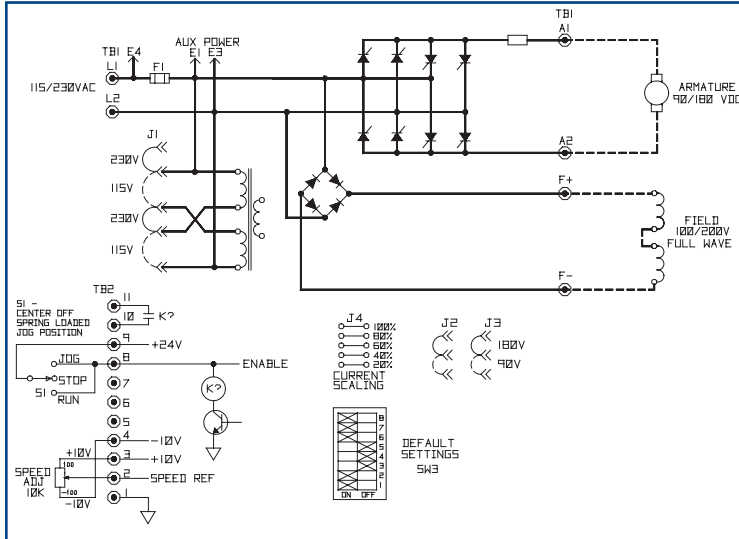


2230 MKII REGENERATIVE

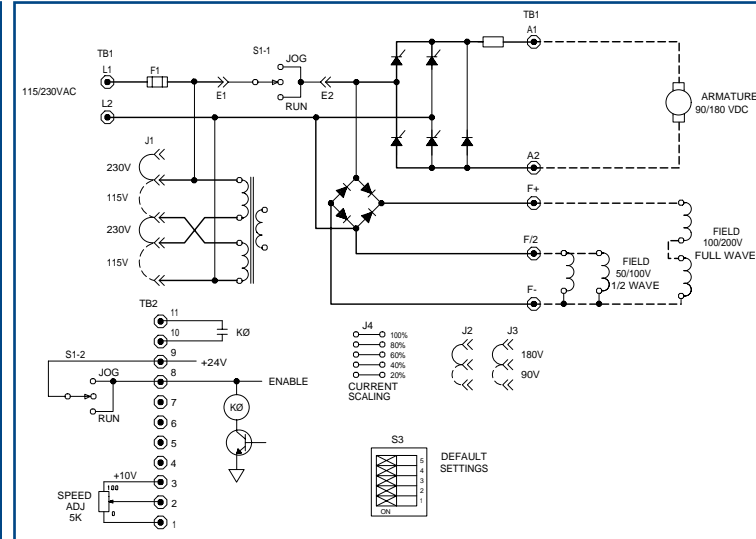


The Saftronics Family of Single Phase DC Drive Controllers

TERMINAL LAYOUTS



2230 MKII Regenerative



2330 MKII Non-Regenerative

DIMENSIONS

MODEL	CHASSIS		NEMA 4/12		VOLTAGE	HP
	DIMENSIONS (inches) (H x W x D)	WEIGHT (lbs)	DIMENSIONS (inches) (H x W x D)	WEIGHT (lbs)		
2230/2330/2610	9.5 x 5 x 4.3	3.25	9.5 x 5 x 5.25	6.05	115/230	1/3
2235/2335/2615	8.88 x 1.75 x 4.25	2.25			115/230	1/2
2240/2600	12.1 x 9 x 6.5	7.7	12.1 x 9 x 8.55	12.1	115/230	1/5

ADJUSTMENTS

- ▶ Acceleration/Deceleration (separate adjustments)
- ▶ Current Limit
- ▶ IR Comp
- ▶ Minimum Speed (0-40%)
- ▶ Maximum Speed (50-100% Base Speed)
- ▶ Dead Band to eliminate zero speed creeping (2230 MKII only)

SPECIFICATIONS

ITEM	RATINGS
Input Voltage Tolerance	+/- 10% of Rated
Input Frequency Tolerance	+/- 2Hz
Ambient Temperature	Chassis 0-55 °C / Nema 4 0-40 °C
O / L	150% / One Minute
Duty	Continuous
Service Factor	1.0
Speed Range	Armature Feedback = 50:1 Tachometer Feedback = 200:1
AC Line Interrupt Capacity	100,000 Amps
Speed Regulation	Voltage Feedback = 2% Tachometer Feedback = 0.5%

