

Liquid Level Control

LLC2 Series

Dual Probe



- Dual Probe Level Control for Conductive Liquids
- Isolated AC Voltage on the Probes
- Adjustable or Fixed Sensing up to 100K Ω
- Terminal Block or Quick Connect Terminals
- Fill or Drain Operation Available
- 24, 120, or 230 V AC Models are Available
- 10 A SPDT Isolated Contacts

Approvals:

Accessories

Electrode
P/N: PHST-38QTN

Female quick connect
P/Ns:
P1015-13 (AWG 10/12)
P1015-64 (AWG 14/16)
P1015-14 (AWG 18/22)

Quick connect to screw adaptor
P/N: P1015-18

Level probe
P/N: LLP-24

See accessory pages for specifications.

Description

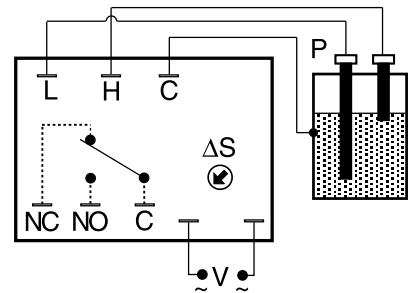
The LLC2 Series is a dual probe conductive liquid level control designed for OEM equipment and commercial appliance applications. Models are available for fill or drain operation. Transformer isolated 12 V AC is provided at the probes to prevent electrolysis. A trickle current of less than 1 mA determines the presence or absence of liquid between the probes and common. On adjustable units, the sensitivity adjustment allows accurate level sensing while ignoring foaming agents and floating debris. The LLC2 Series printed circuit board is conformal coated to resist moisture and corrosion.

Operation

Drain: When the liquid level rises and touches the high probe, the output relay energizes and remains energized until the liquid level falls below the low probe. The output relay then de-energizes and remains de-energized until the liquid again touches the high probe.

Fill: When the liquid level falls below the low probe, the output relay energizes and remains energized until the liquid level rises and touches the high probe. The output relay then de-energizes and remains de-energized until the liquid level again falls below the low probe.

Connection



Connect common to conductive tank. Additional probe is necessary for non-conductive or insulated tanks.

V = Voltage L = Low Probe H = High Probe
C = Probe Common Δ S = Sensitivity Adjustment
NC = Normally Closed NO = Normally Open

Ordering Table

LLC2 Series	X Input	X Operation	X Termination	X Sense Resistance	X Mounting Dimension
	-2 - 24 V AC	-A - Drain	-1 - 0.25 Quick Connect	-A - Adjustable to 100K Ω	-N
	-4 - 120 V AC	-B - Fill	-2 - Terminal Block	-F - Fixed	-C
	-6 - 230 V AC			Specify fixed resistance (1 ... 100) in 1K Ω increments	

Example P/N: LLC26B1AN Fixed – LLC26B1F100N

Liquid Level Control

LLC2 Series

Dual Probe

Liquid level controls

Technical Data

Control			
Type		Resistance sensing for high and low level detection of conductive liquids	
Sense Voltage		12 V AC at probe terminals	
Sense Resistance		Factory fixed or adjustable to 100K Ω	
Sense Resistance Tolerance		Adjustable - guaranteed range Factory fixed +/-10%	
Input			
Voltage		24, 120, or 230 V AC	
Tolerance	24 V AC	-15% ... +20%	
	120 & 230 V AC	-20% ... +10%	
Frequency		50 ... 60 Hz	
Output			
Type		Electromechanical relay	
Form		Isolated single pole double throw (SPDT)	
Rating		10 A resistive at 120/240 V AC & 28 V DC; 1/3 hp at 120/240 V AC	
Life		Mechanical - 1×10^7 ; Electrical - 1×10^5	
Protection			
Isolation Voltage		≥ 1500 V RMS between input, output, & probe	
Mechanical			
Mounting		Surface mount with two or four #6 (M3.5 x 0.6) screws	
Termination		0.25 in. (6.35 mm) duplex male quick connect terminals Terminal blocks for up to #14 AWG (2.5 mm ²) wire	
Package (Open Board)		4 x 3 x 2 in. (101.6 x 76.2 x 50.8 mm)	
Environmental			
Operating Temperature		-20°C ... +55°C	
Storage Temperature		-40°C ... +80°C	
Protection		Printed circuit board is conformal coated to resist moisture and corrosion	
Weight		≈ 9 oz (255 g)	

Mechanical View

