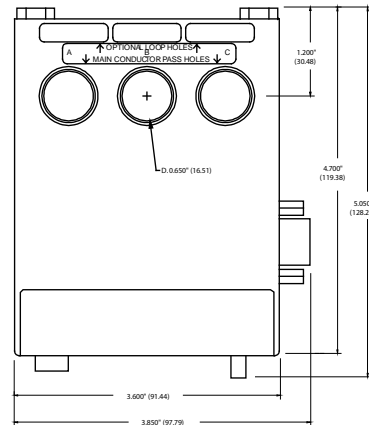
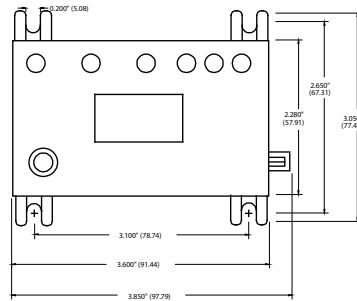


Overload Relays

Model 777VA-03



The SymCom 777VA-03 is an electronic overload relay with the same features as a 777-P, but is designed to work with single-phase to three-phase converters. It is designed to ignore the voltage on L3, which is usually the high leg of a phase converter. It will use the two phases of incoming voltage on L1 and L2 to monitor for voltage fluctuations (while ignoring L3) and use the current draws from the load side of the contactor through the A, B and C holes in the back of the unit to check for unbalance and single phasing.



Specifications

Functional Specifications	
Programmable Operating Points LV-Low Voltage Threshold HV-High Voltage Threshold VUB-Voltage Unbalance Threshold MULT-# of Conductors or CT Ratio (xxx:5) OC-Overcurrent Threshold UC-Undercurrent Threshold CUB-Current Unbalance Threshold TC-Overcurrent Trip Class and Linear Overcurrent Trip Delay RD1-Rapid-cycle Timer RD2-Restart Delay after all faults except undercurrent (motor cool-down timer) RD3-Restart Delay after undercurrent (dry-well recovery timer) #RU- Number of restarts after all undercurrent ADDR-RS485 Address #RF-Number of restarts after all faults except undercurrent UCTD-Undercurrent Trip Delay GF-Ground Fault Current Threshold	170-524V 172-528V N/A 1-10, 100, 150, 200, 300, 400, 500, 600, 700, 800 (20-100A) ÷ MULT of 80-140% of CT Primary (0, 10-98A) ÷ MULT or 40-140% of CT Primary 2-25% or 999 (disabled) 02-30, J02-J30; L00-L60 or oFF 0-500 seconds (standard) 2-500 minutes (standard) 2-500 minutes (standard), A (automatic) 0, 1, 2, 3, 4, A (automatic) A01-A99 0, 1, oc1, 2, oc2, 3, oc3, 4, oc4, A, ocA (automatic) 2-255 seconds (standard) (3-20A) ÷ MULT or 12-80% of CT Primary or OFF
Input Characteristics	
Supply Voltage Frequency Motor Full Load Amp Range	200-480VAC 50/60Hz 2-25A, (looped conductors required); 25-90A (direct); 80-800A (external CTs required)
Output Characteristics	
Output Contact Rating - SPDT (Form C) Pilot Duty General Purpose Expected Life Mechanical Electrical	480VA@240VAC 10A@240VAC 1 x 10 ⁶ operations 1 x 10 ⁵ operations at rated load
General Characteristics	
Operating Temperature Ambient Operating Ambient Storage Accuracy Voltage Current GF Current Timing Repeatability Voltage Current Power Consumption Pollution Degree Class of Protection Relative Humidity Terminal Torque Standards Passed Electrostatic Discharge (ESD) Radio Frequency Immunity (RFI), Conducted Radio Frequency Immunity (RFI), Radiated Fast Transient Burst Short Circuit Surge IEC ANSI/IEEE Hi-potential Test Vibration Shock Safety Marks UL CE Max Conductor Size through 777-P Dimensions Weight Mounting Method	-20° to 70° C (-4° to 158° F) -40° to 80° C (-40° to 176° F) ± 1% ± 3% (<100A direct) ± 15% 5% ± 1 second ± 0.5% of nominal voltage ± 1% (<100A direct) 10 Watts (max.) 3 IP20, NEMA 1 10-95%, non-condensing per IEC 68-2-3 7 in.-lbs. IEC 1000-4-2, Level 3, 6kV contact, 8kV air IEC 1000-4-6, Level 3 10V IEC 1000-4-3, Level 3 10 V/m IEC 1000-4-4, Level 3, 3.5 kV input power 1000-4-5 Level 3, 2kV line-to-line; Level 4, 4kV line-to-ground C62.41 Surge and Ring Wave Compliance to a level of 6kV line-to-line Meets UL508 (2 x rated V + 1000V for 1 minute) IEC 68-2-6, 10-55Hz, 1mm peak-to-peak, 2 hours, 3 axis IEC 68-2-27, 30g, 3 axis, 11ms duration, half-sine pulse UL508, UL1053 IEC 60947-1, IEC 60947-5-1 0.65" with insulation 3.0" H x 5.1" D x 3.6" W 1.2 lbs. Surface mount (4 - #8 screws) or DIN Rail Mount

How to order:

777VA-03

