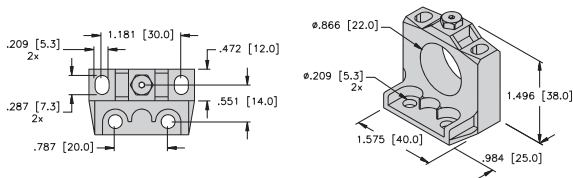


Inductive
Rectangular Sensors

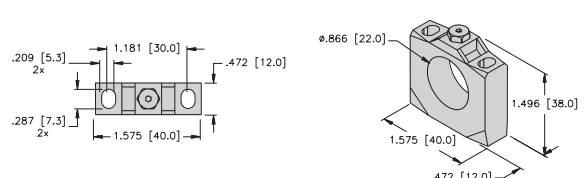


Housing Style - Rectangular	Part Number	ID Number	Features	Embeddable	Sensing Range (mm)	Output
CA40 - Embeddable, eurofast® Connector 	Bi20U-CA40-AN6X2-H1141 W/BS2.1	M1627390	<i>Uprox</i>	•	20	3-Wire DC NPN
	Bi20U-CA40-AP6X2-H1141 W/BS2.1	M1627290	<i>Uprox</i>	•	20	
	Bi20U-CA40-AP6X2-H1141/S1590 W/BS2.0	M1627297	<i>weldguard®</i>	•	20	
	Bi20U-CA40-AP6X2-H1141/S1591 W/BS2.0	M1627296	<i>armorguard®</i>	•	20	
	Bi20U-CA40-AP6X2-H1141/S1591 W/BS2.1	M1627294	<i>armorguard</i>	•	20	
CA40 - Embeddable, minifast® Connector 	Bi20U-CA40-ADZ30X2-B1131 W/BS2.1	M4283290	<i>Uprox</i>	•	20	2-Wire AC/DC Short-Circuit Protected
	Bi20U-CA40-ADZ30X2-B1131/S1669	M4283205	<i>Stoneface®</i>	•	20	
	Bi20-CA40-ADZ30X2-B1131/S34/S1590	M4283593	<i>weldguard</i>	•	20	
	Bi20-CA40-ADZ30X2-B1131/S34/S1591 W/BS2.1	M4283595	<i>armorguard</i>	•	20	
CA40 - Embeddable, microfast® Connector 	Bi20U-CA40-ADZ30X2-B3131 W/BS2.1	M4283292	<i>Uprox</i>	•	20	2-Wire AC/DC Short-Circuit Protected
	Bi20-CA40-ADZ30X2-B3131/S34 W/BS2.1	M4283590		•	20	
	Bi20-CA40-ADZ30X2-B3131/S34/S1590	M4283594	<i>weldguard</i>	•	20	
	Bi20-CA40-ADZ30X2-B3131/S34/S1591 W/BS2.1	M4283596	<i>armorguard</i>	•	20	

Note: 1. BS2.1 is the standard mounting bracket for CA40 unless noted differently.



BS 2.1 Mounting Bracket



BS 2.0 Mounting Bracket

TURCK mold-on connectors available on all cable sensors. See page M25.



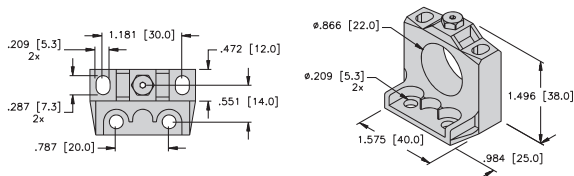
Voltage	Switching Freq. (Hz)	Operating Current (mA)	Operating Temp. (°C)	Protection	Housing	Front Cap/Face	Power LED	Output LED	Mating Cord, Cable Length/Jacket	Wiring Diagram #	Wiring Diagrams
10-30 VDC	250	≤200	-30 to +85	IP 67	AL	TP	GN	YE	RK 4T-*	1	<p>Diagram 1</p>
10-30 VDC	250	≤200	-30 to +85	IP 67	AL	TP	GN	YE	RK 4T-*	2	<p>Diagram 2</p>
	250	≤200	-30 to +85	IP 67	AL	WG	GN	YE	RK 4T-*	2	
	250	≤200	-30 to +85	IP 67	AG	WG	GN	YE	RK 4T-*	2	
	250	≤200	-30 to +85	IP 67	AG	WG	GN	YE	RK 4T-*	2	
10-300 VDC 20-250 VAC	20	≤400/300	-30 to +85	IP 67	AL	TP	GN	YE	RKM 30-*M	3	<p>Diagram 3</p>
	20	≤400/300	-30 to +85	IP 67	AL	SF	GN	YE	RKM 30-*M	3	
	20	≤400/300	-25 to +70	IP 67	AL	WG	GN	YE	RKM 30-*M	3	
	20	≤400/300	-25 to +70	IP 67	AG	WG	GN	YE	RKM 30-*M	3	
10-300 VDC 20-250 VAC	20	≤400/300	-30 to +85	IP 67	AL	TP	GN	YE	KB 3T-*	4	<p>Diagram 4</p>
	20	≤400/300	-25 to +70	IP 67	AL	TP	GN	YE	KB 3T-*	4	
	20	≤400/300	-25 to +70	IP 67	AL	WG	GN	YE	KB 3T-*	4	
	20	≤400/300	-25 to +70	IP 67	AG	WG	GN	YE	KB 3T-*	4	

Rectangular

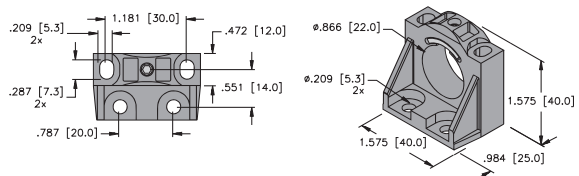


Housing Style - Rectangular	Part Number	ID Number	Features	Embeddable	Sensing Range (mm)	Output	
	Bi 15-CK40-AD4X-H1141 W/BS 2.1	M4465090		•	15	2-Wire DC	
	Ni 20-CK40-AD4X-H1141 W/BS 2.1	M4465290			20		
	Bi 15U-CK40-AN6X2-H1141 W/BS 2.1	M1625690	<i>Uprox</i>	•	15	3-Wire DC NPN	
	Bi 15-CK40-AN6X2-H1141 W/BS 2.1	M1625190		•	15		
	Ni 20-CK40-AN6X2-H1141 W/BS 2.1	M1625390			20		
	Ni 25U-CK40-AN6X2-H1141 W/BS 2.1	M1625789	<i>Uprox</i>		25		
	Ni 35U-CK40-AN6X2-H1141 W/BS 4	M1625810	<i>Uprox</i>		35		
	Bi 15U-CK40-AP6X2-H1141 W/BS 2.1	M1625689	<i>Uprox</i>	•	15	3-Wire DC PNP	
	Bi 15-CK40-AP6X2-H1141 W/BS 2.1	M1625090		•	15		
	Ni 20-CK40-AP6X2-H1141 W/BS 2.1	M1625290			20		
	Ni 25U-CK40-AP6X2-H1141 W/BS 2.1	M1625790	<i>Uprox</i>		25		
	Ni 35U-CK40-AP6X2-H1141 W/BS 4	M1625800	<i>Uprox</i>		35		
	Bi 15-CK40-VN4X2-H1141 W/BS 2.1	M1550190	<i>Comp. Outputs</i>	•	15	4-Wire DC NPN	
	Ni 20-CK40-VN4X2-H1141 W/BS 2.1	M1550390	<i>Comp. Outputs</i>		20		
	Bi 15-CK40-VP4X2-H1141 W/BS 2.1	M1550091	<i>Comp. Outputs</i>	•	15	4-Wire DC PNP	
	Ni 20-CK40-VP4X2-H1141 W/BS 2.1	M1550290	<i>Comp. Outputs</i>		20		
	Ni 35U-CK40-VP6X2-H1141	M1625815	<i>Uprox</i>		35		
	Bi 15-CK40-Y1X-H1141	M4065000			•	15	2-Wire DC NAMUR

Note: 1. BS2.1 is the standard mounting bracket for CK40 unless noted differently.



BS 2.1 Mounting Bracket



BS 4 Mounting Bracket

TURCK mold-on connectors available on all cable sensors. See page M25.

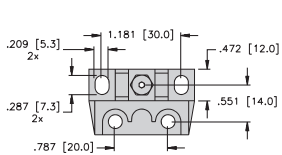


Voltage	Switching Freq. (Hz)	Operating Current (mA)	Operating Temp. (°C)	Protection	Housing	Front Cap/Face	Power LED	Output LED	Mating Cord, Cable Length/Jacket	Wiring Diagram #	Wiring Diagrams
10-65 VDC	150	≤100	-25 to +70	IP 67	PBT	PBT	GN	YE	RK 4.2T-*	1	Diagram 1
	200	≤100	-25 to +70	IP 67	PBT	PBT	GN	YE	RK 4.2T-*	1	
10-30 VDC	250	≤200	-30 to +85	IP 68	PBT	PBT	GN	YE	RK 4T-*	2	Diagram 2
	150	≤200	-25 to +70	IP 67	PBT	PBT	GN	YE	RK 4T-*	2	
	150	≤200	-25 to +70	IP 67	PBT	PBT	GN	YE	RK 4T-*	2	
	250	≤200	-30 to +85	IP 68	PBT	PBT	GN	YE	RK 4T-*	2	
	250	≤200	-30 to +85	IP 67	PBT	PBT	GN	YE	RK 4T-*	2	
10-30 VDC	250	≤200	-30 to +85	IP 68	PBT	PBT	GN	YE	RK 4T-*	3	Diagram 3
	150	≤200	-25 to +70	IP 67	PBT	PBT	GN	YE	RK 4T-*	3	
	150	≤200	-25 to +70	IP 67	PBT	PBT	GN	YE	RK 4T-*	3	
	250	≤200	-30 to +85	IP 68	PBT	PBT	GN	YE	RK 4T-*	3	
	250	≤200	-30 to +85	IP 67	PBT	PBT	GN	YE	RK 4T-*	3	
10-65 VDC	250	≤200	-25 to +70	IP 67	PBT	PBT	GN	YE	RK 4.4T-*	4	Diagram 4
	250	≤200	-25 to +70	IP 67	PBT	PBT	GN	YE	RK 4.4T-*	4	
10-65 VDC	250	≤200	-25 to +70	IP 67	PBT	PBT	GN	YE	RK 4.4T-*	5	Diagram 5
	250	≤200	-25 to +70	IP 67	PBT	PBT	GN	YE	RK 4.4T-*	5	
	250	≤200	-25 to +70	IP 67	PBT	PBT	GN	YE	RK 4.4T-*	5	
5-30 VDC	150	Remote	-25 to +70	IP 67	PBT	PBT	N/A	YE	RK 4.21T-*	6	Diagram 6

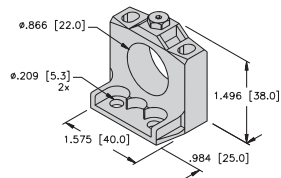
Rectangular



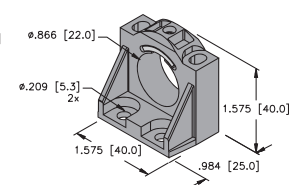
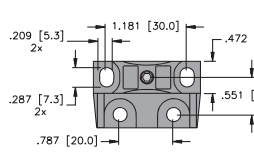
Housing Style - Rectangular	Part Number	ID Number	Features	Embeddable	Sensing Range (mm)	Output	
CK40 - Embeddable/Nonembeddable, minifast® Connector 	Bi15U-CK40-ADZ30X2-B1131 W/BS 2.1	M4280090	<i>Uprox</i>	•	15	2-Wire AC/DC Short-Circuit Protected	
	Ni25U-CK40-ADZ30X2-B1131 W/BS 2.1	M4280290	<i>Uprox</i>		25		
	Ni35U-CK40-ADZ30X2-B1131 W/BS 4	M4280410	<i>Uprox</i>		35		
	Bi15-CK40-ADZ30X2-B1131/S34 W/BS 2.1	M4244090		WFI	•	15	2-Wire AC/DC Short-Circuit Protected
	Bi15-CK40-AZ3X2-B1131 W/BS 2.1	M1335091			•	15	2-Wire AC/DC
	Ni20-CK40-AZ3X2-B1131 W/BS 2.1	M1335291				20	
CK40 - Embeddable/Nonembeddable, microfast® Connector 	Bi15U-CK40-ADZ30X2-B3131 W/BS 2.1	M4280091	<i>Uprox</i>	•	15	2-Wire AC/DC Short-Circuit Protected	
	Ni25U-CK40-ADZ30X2-B3131 W/BS 2.1	M4280291	<i>Uprox</i>		25		
	Ni35U-CK40-ADZ30X2-B3131 W/BS 4	M4280430	<i>Uprox</i>		35		
	Bi15-CK40-ADZ30X2-B3131/S34 W/BS 2.1	M4244290		WFI	•	15	2-Wire AC/DC Short-Circuit Protected
	Bi15-CK40-AZ3X2-B3131 W/BS 2.1	M1335095			•	15	2-Wire AC/DC
	Ni20-CK40-AZ3X2-B3131 W/BS 2.1	M1335290				20	



BS 2.1 Mounting Bracket



BS 4 Mounting Bracket



TURCK mold-on connectors available on all cable sensors. See page M25.



Voltage	Switching Freq. (Hz)	Operating Current (mA)	Operating Temp. (°C)	Protection	Housing	Front Cap/Face	Power LED	Output LED	Mating Cord, Cable Length/Jacket	Wiring Diagram #	Wiring Diagrams
10-300 VDC 20-250 VAC	60	≤400/300	-30 to +85	IP 68	PBT	PBT	GN	YE	RKM 30-*M	1	<p>Diagram 1</p> <p>Diagram 2</p>
	60	≤400/300	-30 to +85	IP 67	PBT	PBT	GN	YE	RKM 30-*M	1	
	60	≤400/300	-30 to +85	IP 68	PBT	PBT	GN	YE	RKM 30-*M	1	
10-300 VDC 20-250 VAC	30	≤400/300	-25 to +70	IP 67	PBT	PBT	GN	YE	RKM 30-*M	1	
	20	≤400/300	-25 to +70	IP 67	PBT	PBT	GN	YE	RKM 30-*M	1	
10-300 VDC 20-250 VAC	20	≤400/300	-25 to +70	IP 67	PBT	PBT	GN	YE	RKM 30-*M	1	
	20	≤400/300	-25 to +70	IP 67	PBT	PBT	GN	YE	RKM 30-*M	1	
	60	≤400/300	-30 to +85	IP 68	PBT	PBT	GN	YE	KB 3T-*	2	
10-300 VDC 20-250 VAC	60	≤400/300	-30 to +85	IP 67	PBT	PBT	GN	YE	KB 3T-*	2	
	60	≤400/300	-30 to +85	IP 68	PBT	PBT	GN	YE	KB 3T-*	2	
	30	≤400/300	-25 to +70	IP 67	PBT	PBT	GN	YE	KB 3T-*	2	
10-300 VDC 20-250 VAC	20	≤400/300	-25 to +70	IP 67	PBT	PBT	GN	YE	KB 3T-*	2	
	20	≤400/300	-25 to +70	IP 67	PBT	PBT	GN	YE	KB 3T-*	2	

Rectangular



Housing Style - Rectangular	Part Number	ID Number	Features	Embeddable	Sensing Range (mm)	Output
	Bi 15-CP40-AD4X	M4477000		•	15	2-Wire DC
	Ni 20-CP40-AD4X	M4477100			20	
	Bi 15U-CP40-AN6X2	M1623512	<i>Uprox</i>	•	15	3-Wire DC NPN
	Bi 15-CP40-AN6X2	M1623000		•	15	
	Ni 20-CP40-AN6X2	M1623100			20	
	Ni 25U-CP40-AN6X2	M1623711	<i>Uprox</i>		25	
	Ni 40U-CP40-AN6X2	M1623610	<i>Uprox, Ext. Range</i>		40	
	Bi 15-CP40-AN6X2/S97	M1623001	<i>Low Temp -40° C</i>	•	15	
	Bi 15U-CP40-AP6X2	M1623502	<i>Uprox</i>	•	15	3-Wire DC PNP
	Bi 15-CP40-AP6X2	M1603000		•	15	
	Ni 20-CP40-AP6X2	M1603100			20	
	Ni 25U-CP40-AP6X2	M1623701	<i>Uprox</i>		25	
	Ni 40U-CP40-AP6X2	M1623602	<i>Uprox</i>		40	
	Ni 50U-CP40-AP6X2	M1625842	<i>Uprox, Ext. Range</i>		50	
	Bi 15U-CP40-VN4X2	M1540511	<i>Uprox</i>	•	15	4-Wire NPN
	Bi 15-CP40-VN4X2	M1525000	<i>Comp. Outputs</i>	•	15	
	Bi 15-CP40-VN4X2/S100	M1514400	<i>High Temp. 100°C</i>	•	15	
	Bi 20-CP40-VN4X2	M1579221	<i>Ext. Range</i>	•	20	
	Ni 20-CP40-VN4X2	M1525100	<i>Comp. Outputs</i>		20	
	Ni 20-CP40-VN4X2/S100	M1527200	<i>High Temp. 100°C</i>		20	
	Ni 35-CP40-VN4X2	M1525400	<i>Comp. Outputs</i>		35	
	Ni 40U-CP40-VN4X2	M1540611	<i>Uprox, Ext. Range</i>		40	
	Ni 50U-CP40-VN4X2	M1625807	<i>Uprox</i>		50	
	Bi 15U-CP40-VP4X2	M1540501	<i>Uprox</i>	•	15	4-Wire PNP
	Bi 15-CP40-VP4X2	M1501000	<i>Comp. Outputs</i>	•	15	
	Bi 15-CP40-VP4X2/S100	M1501900	<i>High Temp. 100°C</i>	•	15	
	Bi 20-CP40-VP4X2	M1501200	<i>Ext. Range</i>	•	20	
	Ni 20-CP40-VP4X2	M1501100	<i>Comp. Outputs</i>		20	
	Ni 20-CP40-VP4X2/S100	M1502000	<i>High Temp. 100°C</i>		20	
	Ni 35-CP40-VP4X2	M1501400	<i>Comp. Outputs</i>		35	
Ni 40U-CP40-VP4X2	M1540601	<i>Uprox, Ext. Range</i>		40		
Ni 50U-CP40-VP4X2	M1538303	<i>Uprox</i>		50		

TURCK mold-on connectors available on all cable sensors. See page M25.



Voltage	Switching Freq. (Hz)	Operating Current (mA)	Operating Temp. (°C)	Protection	Housing	Front Cap/Face	Power LED	Output LED	Mating Cord, Cable Length/Jacket	Wiring Diagram #	Wiring Diagrams
10-65 VDC	150	≤100	-25 to +70	IP 67	PBT	PBT	N/A	YE	- - - -	1	Diagram 1
	150	≤100	-25 to +70	IP 67	PBT	PBT	N/A	YE	- - - -	1	
10-30 VDC	250	≤200	-30 to +85	IP 68	PBT	PBT	GN	YE	- - - -	2	Diagram 2
	150	≤200	-25 to +70	IP 67	PBT	PBT	GN	YE	- - - -	2	
	150	≤200	-25 to +70	IP 67	PBT	PBT	GN	YE	- - - -	2	
	250	≤200	-30 to +85	IP 67	PBT	PBT	GN	YE	- - - -	2	
	250	≤200	-30 to +85	IP 67	PBT	PBT	GN	YE	- - - -	2	
	250	≤200	-40 to +70	IP 67	PBT	PBT	GN	YE	- - - -	2	
10-30 VDC	250	≤200	-30 to +85	IP 68	PBT	PBT	GN	YE	- - - -	3	Diagram 3
	150	≤200	-25 to +70	IP 67	PBT	PBT	GN	YE	- - - -	3	
	150	≤200	-25 to +70	IP 67	PBT	PBT	GN	YE	- - - -	3	
	250	≤200	-30 to +85	IP 67	PBT	PBT	GN	YE	- - - -	3	
	250	≤200	-30 to +85	IP 68	PBT	PBT	GN	YE	- - - -	3	
	250	≤200	-30 to +85	IP 68	PBT	PBT	GN	YE	- - - -	3	
10-65 VDC	250	≤200	-30 to +85	IP 68	PBT	PBT	GN	YE	- - - -	4	Diagram 4
	150	≤200	-25 to +70	IP 67	PBT	PBT	GN	YE	- - - -	4	
	150	≤200	-25 to +100	IP 67	PBT	PBT	GN	YE	- - - -	4	
	100	≤200	-25 to +70	IP 67	PBT	PBT	GN	YE	- - - -	4	
	150	≤200	-25 to +70	IP 67	PBT	PBT	GN	YE	- - - -	4	
	150	≤200	-25 to +100	IP 67	PBT	PBT	GN	YE	- - - -	4	
	150	≤200	-25 to +70	IP 67	PBT	PBT	GN	YE	- - - -	4	
	250	≤200	-30 to +85	IP 68	PBT	PBT	GN	YE	- - - -	4	
	250	≤200	-30 to +85	IP 68	PBT	PBT	GN	YE	- - - -	4	
10-65 VDC	250	≤200	-30 to +85	IP 67	PBT	PBT	GN	YE	- - - -	5	Diagram 5
	150	≤200	-25 to +70	IP 67	PBT	PBT	GN	YE	- - - -	5	
	150	≤200	-25 to +100	IP 67	PBT	PBT	GN	YE	- - - -	5	
	100	≤200	-25 to +70	IP 67	PBT	PBT	GN	YE	- - - -	5	
	150	≤200	-25 to +70	IP 67	PBT	PBT	GN	YE	- - - -	5	
	150	≤200	-25 to +100	IP 67	PBT	PBT	GN	YE	- - - -	5	
	150	≤200	-25 to +70	IP 67	PBT	PBT	GN	YE	- - - -	5	
	250	≤200	-30 to +85	IP 68	PBT	PBT	GN	YE	- - - -	5	
	250	≤200	-30 to +85	IP 68	PBT	PBT	GN	YE	- - - -	5	

Rectangular



Housing Style - Rectangular	Part Number	ID Number	Features	Embeddable	Sensing Range (mm)	Output
	Bi15-CP40-VN4X2/S109	M1526900	Time Delay	•	15	4-Wire NPN
	Ni20-CP40-VN4X2/S109	M1527100	Time Delay		20	
	Bi15-CP40-VP4X2/S109	M1504721	Time Delay	•	15	4-Wire PNP
	Ni30-CP40-VP4X2/S109	M1512521	Time Delay		30	
	Bi15-CP40-VN4X2/S110	M1527000	Time Delay	•	15	4-Wire NPN
	Ni20-CP40-VN4X2/S110	M1527300	Time Delay		20	
	Bi15-CP40-VP4X2/S110	M1509821	Time Delay	•	15	4-Wire PNP
	Ni20-CP40-VP4X2/S110	M1509921	Time Delay		20	
	Bi15-CP40-FDZ30X2	M4224100	Prog. Outputs	•	15	2-Wire AC/DC
	Bi15-CP40-FDZ30X2/S34	M4226100	WFI	•	15	
	Bi15-CP40-FDZ30X2/S97	M4226600	Low Temp. -40°C	•	15	
	Bi15U-CP40-FDZ30X2	M4280601	Uprox	•	15	
	Ni20-CP40-FDZ30X2	M4224200	Prog. Outputs		20	
	Ni35-CP40-FDZ30X2	M4224500	Prog. Outputs		35	
	Ni40U-CP40-FDZ30X2	M4280801	Uprox		40	
	Bi15-CP40-FZ3X2	M1341000	Prog. Outputs	•	15	2-Wire AC/DC
	Bi15-CP40-FZ3X2/S97	M1341010	Low Temp. -40°C	•	15	
	Bi15-CP40-FZ3X2/S100	M1377600	High Temp. 100°C	•	15	
	Ni20-CP40-FZ3X2	M1341100	Prog. Outputs		20	
	Ni20-CP40-FZ3X2/S100	M1377500	High Temp. 100°C		20	
	Ni35-CP40-FZ3X2	M1341300	Prog. Outputs		35	
	Ni40-CP40-FZ3X2/S100	M1374802	High Temp. 100°C		40	
	Bi15-CP40-FZ3X2/S109	M1373700	Time Delay	•	15	2-Wire AC
	Bi15-CP40-FZ3X2/S110	M1373500	Time Delay	•	15	
	Ni20-CP40-FZ3X2/S109	M1374500	Time Delay		20	
	Ni20-CP40-FZ3X2/S110	M1374600	Time Delay		20	
	Ni30-CP40-FZ3X2/S109	M1374700	Time Delay		30	
	Ni30-CP40-FZ3X2/S110	M1374400	Time Delay		30	
Bi15-CP40-VDZ3X2	M4222700	Comp. Outputs	•	15	4-Wire AC/DC	
Bi15-CP40-Y1X	M1012000		•	15	NAMUR	
Ni20-CP40-Y1X	M1012100			20		

WFI = Weld-Field Immune Sensors.
 "/S109" Designates on Delay.
 "/S110" Designates off Delay.

TURCK mold-on connectors available on all cable sensors. See page M25.



Voltage	Switching Freq. (Hz)	Operating Current (mA)	Operating Temp. (°C)	Protection	Housing	Front Cap/Face	Power LED	Output LED	Mating Cord/ Cable Length/Jacket	Wiring Diagram #	Wiring Diagrams
10-65 VDC	- -	≤200	-25 to +70	IP 67	PBT	PBT	GN	YE	- - - -	1	Diagram 1
	- -	≤200	-25 to +70	IP 67	PBT	PBT	GN	YE	- - - -	1	
10-65 VDC	- -	≤200	-25 to +70	IP 67	PBT	PBT	GN	YE	- - - -	2	Diagram 2
	- -	≤200	-25 to +70	IP 67	PBT	PBT	GN	YE	- - - -	2	
10-65 VDC	- -	≤200	-25 to +70	IP 67	PBT	PBT	GN	YE	- - - -	1	Diagram 3
	- -	≤200	-25 to +70	IP 67	PBT	PBT	GN	YE	- - - -	1	
10-300 VDC 20-250 VAC	60	≤400/300	-25 to +70	IP 67	PBT	PBT	GN	YE	- - - -	3	Diagram 4
	30	≤400/300	-25 to +70	IP 67	PBT	PBT	GN	YE	- - - -	3	
	60	≤400/300	-40 to +70	IP 67	PBT	PBT	GN	YE	- - - -	3	
	60	≤400/300	-30 to +85	IP 67	PBT	PBT	GN	YE	- - - -	3	
	60	≤400/300	-25 to +70	IP 67	PBT	PBT	GN	YE	- - - -	3	
	60	≤400/300	-25 to +70	IP 67	PBT	PBT	GN	YE	- - - -	3	
10-300 VDC 20-250 VAC	20	≤400/300	-25 to +70	IP 67	PBT	PBT	GN	YE	- - - -	3	Diagram 5
	20	≤400/300	-40 to +70	IP 67	PBT	PBT	GN	YE	- - - -	3	
	20	≤400/300	-25 to +100	IP 67	PBT	PBT	GN	YE	- - - -	3	
	20	≤400/300	-25 to +70	IP 67	PBT	PBT	GN	YE	- - - -	3	
	20	≤400/300	-25 to +100	IP 67	PBT	PBT	GN	YE	- - - -	3	
	20	≤400/300	-25 to +70	IP 67	PBT	PBT	GN	YE	- - - -	3	
	20	≤400/300	-25 to +100	IP 67	PBT	PBT	GN	YE	- - - -	3	
20-250 VAC	20	≤400/300	-25 to +70	IP 67	PBT	PBT	GN	YE	- - - -	3	Diagram 6
	20	≤400/300	-25 to +70	IP 67	PBT	PBT	GN	YE	- - - -	3	
	20	≤400/300	-25 to +70	IP 67	PBT	PBT	GN	YE	- - - -	3	
	20	≤400/300	-25 to +70	IP 67	PBT	PBT	GN	YE	- - - -	3	
	20	≤400/300	-25 to +70	IP 67	PBT	PBT	GN	YE	- - - -	3	
	20	≤400/300	-25 to +70	IP 67	PBT	PBT	GN	YE	- - - -	3	
20-250 VAC 20-320 VDC	30	≤400/300	-25 to +70	IP 67	PBT	PBT	GN	YE	- - - -	4	Diagram 7
5-30 VDC	150	Remote	-25 to +70	IP 67	PBT	PBT	N/A	YE	- - - -	5	
	150	Remote	-25 to +70	IP 67	PBT	PBT	N/A	YE	- - - -	5	

Rectangular