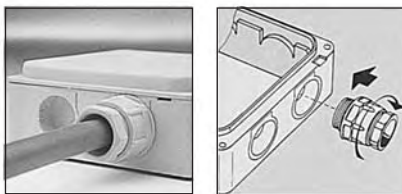


FLEX O BOX

Features

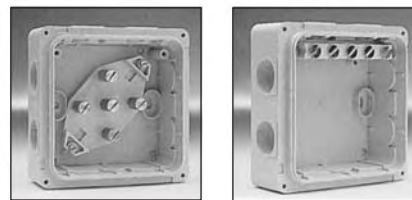
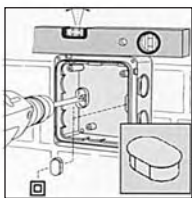
- Flexible entries make cutting and breaking unnecessary. Cables or tubes can be inserted into them directly.
- Cables glands can be screwed directly into the entries without any joints or lockout being necessary.
- Nine entries: 7xPG16 in the side walls and two 20-cm holes in the backwall.
- Substantial space for wiring
- The double-wall base makes the box extremely rigid. Oval fastening points facilitate levelling.
- Terminal blocks are available for making rapid, safe connections.
- CEBC, KEMA and VDE approved
- Safe and reliable entries, even years later
- IP65 protection degree
- Total insulation
- Manufactured in high quality thermoplastic material
- Resistant in tests to heat from a 750°C incandescent wire
- Halogen-free



FIXING HOLES

These are easily accessible and facilitate levelling.

The insulation caps ensure total insulation.



TERMINAL BLOCKS

Two models are available, i.e. pin-type and hole-type.

The latter can be screwed diagonally or along a wall.



ENTRIES and COVER

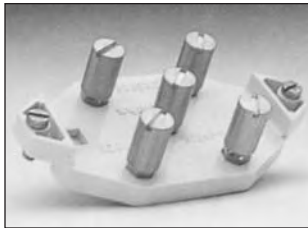
The entries are marked. A table on the inner side of the cover can be used to describe circuits.





FB442

Flex-O-Box
6 mm² junction box
Color: RAL 7035
Halogen-free



FBTB

6 mm² 500 V
pin-type 5-terminal block
Halogen-free
Possible connections per terminal
6 x 1.5 mm² 3 x 4 mm²
4 x 2.5 mm² 2 x 6 mm²



FBTS

6 mm² 500 V
hole-type 5-terminal strip
Possible connections per terminal
6 x 1.5 mm² 3 x 4 mm²
4 x 2.5 mm² 2 x 6 mm²



PG16SE

PG16 cable seal, grey



PG165058

PG16 entry socket for 5/8 inch tube, grey



PG165034

PG16 entry socket for 3/4 inch tube, grey



PG16I

PG16 insulation cap, grey

FBCS

Stainless steel cover fastening screws

Technical Data

- Suitable for surface mounting
- 6mm² - 500V
- IP65 protection degree
- Standards and approval:
CEBEC: NBN C68-685-2-0
NBN C68-685-1
VDE: 0606 Teil 1
KEMA: IEC670
- Color: RAL 7035
- Material: resists the 750° C incandescent
- Halogen-free

Flexible Entries

- 7 xPG16 in the side wall
- 2 x 20 mm max. diameter entries in the back of the base
- Suitable for 20 mm max. diameter cable
- Suitable for 5/8" and 3/4" inch tubes
- Suitable for cable seals (8 mm min. thread length)

