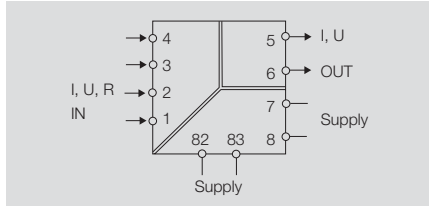


**Universal converter**

- Isolating and converting of temperature signals and DC signals
- Configuration using FDT/DTM software
- Power supply via the DIN-rail-bus
- 3 way isolation

**ACT20M-UI-AO-S**



**Technical data**

<b>Input</b>	
Sensor	
Potentiometer	
Resistance	
Input current	
Input voltage	
Sensor supply	
<b>Output</b>	
Output current	
Output voltage	
Load resistance, current	
Load resistance, voltage	
<b>General data</b>	
Supply voltage	
Ambient temperature (operational)	
Storage temperature	
Accuracy	
Temperature coefficient	
<b>Insulation coordination</b>	
Insulation voltage	
Rated voltage	
Pollution degree	
Overvoltage category	
<b>Approvals</b>	
Pending	
<b>Dimensions</b>	
Length x width x height	mm
Clamping range (nominal / min. / max.)	mm <sup>2</sup>
<b>Note</b>	

Thermocouples: B, E, J, K, L, LR, N, R, S, T, U, W3, W5
RTD: PT100, PT1000, Ni100, Ni1000
2/3/4 conductor
10 Ω...10 kΩ
10 Ω...10 kΩ
0/4...20 mA
0/2...10 V
> 15 V DC at 20 mA
0/4...20 mA
0/2...10 V
< 600 Ω
> 10 k Ω
24 V DC ± 30 %
-25 °C...+70 °C
-40 °C...+85 °C
< 0,1 % span (DC, RTD)
< 0,2 % + CJ error (TC)
< 0,01 % /K
2,5 kV
300 V
2
II
cULus 61010-1, FM Div.2, ATEX zone 2, DNV, GL

**Ordering data**

<b>Note</b>	
-------------	--

Type	Qty.	Order No.
ACT20M-UI-AO-S	1	1176030000

**Accessories**

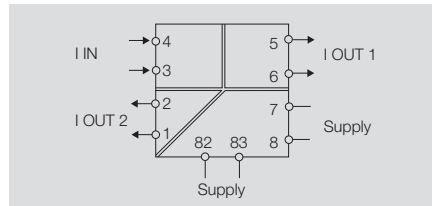
Marker	
USB interface	
<b>Note</b>	

Type	Qty.	Order No.
MF 5/7,5 MC NEUTRAL		1877680000
CBX200 USB		8978580000
DIN rail bus, refer to accessories page		

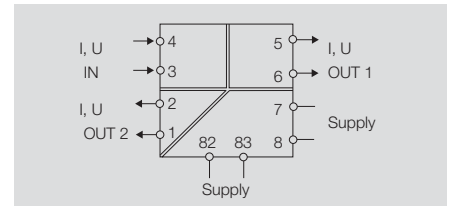
**Signal splitter**

- Isolating, converting and splitting DC signals
- Configured using DIP switch
- Power supply via the DIN-rail-bus
- 4 way isolation

**ACT20M-CI-2CO-S**



**ACT20M-AI-2AO-S**



**Technical data**

<b>Input</b>	
Input current	0/4...20 mA
Input voltage	-
Sensor supply	
-	
<b>Output</b>	
Output current	0/4...20 mA
Output voltage	-
Load resistance, current	
Load resistance, voltage	< 300 Ω > 10 k Ω
<b>General data</b>	
Supply voltage	24 V DC ± 30 %
Ambient temperature (operational)	-25 °C...+70 °C
Storage temperature	-40 °C...+85 °C
Accuracy	< 0.05 % of measurement range
Temperature coefficient	< 0.01 % /K
Cut-off-frequency	100 Hz
<b>Insulation coordination</b>	
Insulation voltage	2.5 kV
Rated voltage	300 V
Pollution degree	2
Overvoltage category	II
<b>Approvals</b>	
Pending	

<b>Input</b>		
Input current	0/4...20 mA	
Input voltage	-	
Sensor supply		
-		
<b>Output</b>		
Output current	0/4...20 mA	
Output voltage	-	
Load resistance, current		
Load resistance, voltage	< 300 Ω > 10 k Ω	
<b>General data</b>		
Supply voltage	24 V DC ± 30 %	
Ambient temperature (operational)	-25 °C...+70 °C	
Storage temperature	-40 °C...+85 °C	
Accuracy	< 0.05 % of measurement range	
Temperature coefficient	< 0.01 % /K	
Cut-off-frequency	100 Hz	
<b>Insulation coordination</b>		
Insulation voltage	2.5 kV	
Rated voltage	300 V	
Pollution degree	2	
Overvoltage category	II	
<b>Approvals</b>		
cULus 61010-1, FM Div.2, ATEX zone 2, DNV, GL		

<b>Input</b>		
Input current	0/4...20 mA	
Input voltage	0/2...10 V 0/1...5 V > 17 V DC at 20 mA	
Sensor supply		
-		
<b>Output</b>		
Output current	0/4...20 mA	
Output voltage	0/2...10 V 0/1...5 V < 300 Ω > 10 k Ω	
Load resistance, current		
Load resistance, voltage	< 300 Ω > 10 k Ω	
<b>General data</b>		
Supply voltage	24 V DC ± 30 %	
Ambient temperature (operational)	-25 °C...+70 °C	
Storage temperature	-40 °C...+85 °C	
Accuracy	< 0.05 % of measurement range	
Temperature coefficient	< 0.01 % /K	
Cut-off-frequency	100 Hz	
<b>Insulation coordination</b>		
Insulation voltage	2.5 kV	
Rated voltage	300 V	
Pollution degree	2	
Overvoltage category	II	
<b>Approvals</b>		
cULus 61010-1, FM Div.2, ATEX zone 2, DNV, GL		

<b>Dimensions</b>	
Length x width x height	mm 114.3 x 6.1 x 112.5
Clamping range (nominal / min. / max.)	mm <sup>2</sup> 2.5 / 0.5 / 2.5
<b>Note</b>	

<b>Dimensions</b>		
Length x width x height	mm 114.3 x 6.1 x 112.5	
Clamping range (nominal / min. / max.)	mm <sup>2</sup> 2.5 / 0.5 / 2.5	
<b>Note</b>		

<b>Dimensions</b>		
Length x width x height	mm 114.3 x 6.1 x 112.5	
Clamping range (nominal / min. / max.)	mm <sup>2</sup> 2.5 / 0.5 / 2.5	
<b>Note</b>		

**Ordering data**

<b>Type</b>	
ACT20M-CI-2CO-S	
<b>Qty.</b>	
1	
<b>Order No.</b>	
1175990000	
<b>Note</b>	

<b>Type</b>		
ACT20M-CI-2CO-S		
<b>Qty.</b>		
1		
<b>Order No.</b>		
1175990000		
<b>Note</b>		

<b>Type</b>	
ACT20M-AI-2AO-S	
<b>Qty.</b>	
1	
<b>Order No.</b>	
1176020000	
<b>Note</b>	

**Accessories**

<b>Type</b>	
MF 5/7.5 MC NEUTRAL	
<b>Qty.</b>	
1	
<b>Order No.</b>	
1877680000	
<b>Note</b>	
DIN rail bus, refer to accessories page	

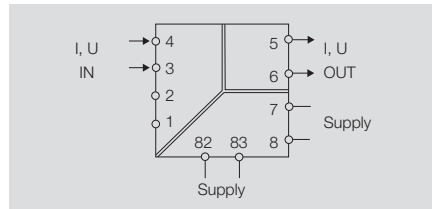
<b>Type</b>		
MF 5/7.5 MC NEUTRAL		
<b>Qty.</b>		
1		
<b>Order No.</b>		
1877680000		
<b>Note</b>		
DIN rail bus, refer to accessories page		

<b>Type</b>	
MF 5/7.5 MC NEUTRAL	
<b>Qty.</b>	
1	
<b>Order No.</b>	
1877680000	
<b>Note</b>	
DIN rail bus, refer to accessories page	

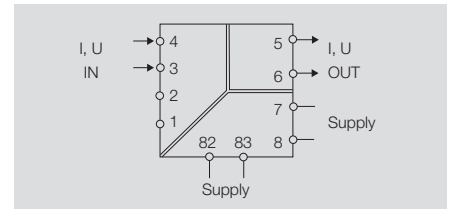
**Universal DC converter**

- Isolating and converting DC signals
- Configured using DIP switch
- Power supply via the DIN-rail-bus
- 3 way isolation

**ACT20M-AI-AO-S**



**ACT20M-AI-AO-E-S**



**Technical data**

<b>Input</b>	
Input current	0/4...20 mA
Input voltage	0/2...10 V
Sensor supply	0/1...5 V
Sensor supply	> 17 V DC at 20 mA
<b>Output</b>	
Output current	0/4...20 mA
Output voltage	0/2...10 V
Load resistance, current	0/1...5 V
Load resistance, voltage	< 600 Ω
	> 10 k Ω
<b>General data</b>	
Supply voltage	24 V DC ± 30 %
Ambient temperature (operational)	-25 °C...+70 °C
Storage temperature	-40 °C...+85 °C
Accuracy	< 0.05 % of measurement range
Temperature coefficient	< 0.01 % /K
Cut-off-frequency	100 Hz
<b>Insulation coordination</b>	
Insulation voltage	2.5 kV
Rated voltage	300 V
Pollution degree	2
Overvoltage category	II
<b>Approvals</b>	
Pending	cULus 61010-1, FM Div.2, ATEX zone 2, DNV, GL

Input current	0/4...20 mA
Input voltage	0/2...10 V
Sensor supply	0/1...5 V
Sensor supply	> 17 V DC at 20 mA
Output current	0/4...20 mA
Output voltage	0/2...10 V
Load resistance, current	0/1...5 V
Load resistance, voltage	< 600 Ω
	> 10 k Ω
Supply voltage	24 V DC ± 30 %
Ambient temperature (operational)	-25 °C...+70 °C
Storage temperature	-40 °C...+85 °C
Accuracy	< 0.05 % of measurement range
Temperature coefficient	< 0.01 % /K
Cut-off-frequency	100 Hz
Insulation voltage	2.5 kV
Rated voltage	300 V
Pollution degree	2
Overvoltage category	II
Approvals	cULus 61010-1, FM Div.2, ATEX zone 2, DNV, GL

Input current	0/4...20 mA
Input voltage	0/2...10 V
Sensor supply	0/1...5 V
Sensor supply	-
Output current	0/4...20 mA
Output voltage	0/2...10 V
Load resistance, current	0/1...5 V
Load resistance, voltage	< 600 Ω
	> 10 k Ω
Supply voltage	24 V DC ± 30 %
Ambient temperature (operational)	0 °C...+70 °C
Storage temperature	-40 °C...+85 °C
Accuracy	< 0.2 % of measurement range
Temperature coefficient	< 0.015 % /K
Cut-off-frequency	100 Hz
Insulation voltage	2.5 kV
Rated voltage	300 V
Pollution degree	2
Overvoltage category	II
Approvals	cULus 61010-1, DNV, GL

<b>Dimensions</b>	
Length x width x height	mm 114.3 x 6.1 x 112.5
Clamping range (nominal / min. / max.)	mm <sup>2</sup> 2.5 / 0.5 / 2.5
<b>Note</b>	

Length x width x height	mm 114.3 x 6.1 x 112.5
Clamping range (nominal / min. / max.)	mm <sup>2</sup> 2.5 / 0.5 / 2.5
<b>Note</b>	

Length x width x height	mm 114.3 x 6.1 x 112.5
Clamping range (nominal / min. / max.)	mm <sup>2</sup> 2.5 / 0.5 / 2.5
<b>Note</b>	

**Ordering data**

<b>Type</b>	
ACT20M-AI-AO-S	
<b>Note</b>	

Type	Qty.	Order No.
ACT20M-AI-AO-S	1	117600000
<b>Note</b>		

Type	Qty.	Order No.
ACT20M-AI-AO-E-S	1	117601000
<b>Note</b>		

**Accessories**

<b>Type</b>	
Marker	
<b>Note</b>	

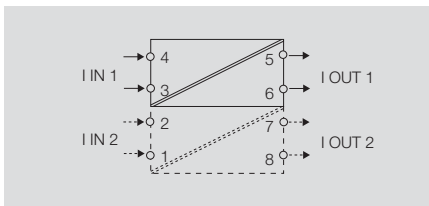
Type	Qty.	Order No.
MF 5/7.5 MC NEUTRAL		1877680000
DIN rail bus, refer to accessories page		

Type	Qty.	Order No.
MF 5/7.5 MC NEUTRAL		1877680000
DIN rail bus, refer to accessories page		

**Passive isolator**

- Isolation of DC signals without a separate power supply
- Supplied with power from the input measuring circuit
- Available as either single channel or double channel version
- 2 way isolation

**ACT20M-CI-CO-ILP-S**



**Technical data**

<b>Input</b>	
Input current	0/4...20 mA
<b>Output</b>	
Output current	0/4...20 mA
Load resistance, current	< 600 Ω
<b>General data</b>	
Voltage drop	≤ 1.2 V
Ambient temperature (operational)	-25 °C...+70 °C
Storage temperature	-40 °C...+85 °C
Accuracy	< 0.1 % of measurement range
Temperature coefficient	< 0.01 % /K
Cut-off-frequency	100 Hz
<b>Insulation coordination</b>	
Insulation voltage	2.5 kV
Rated voltage	300 V
Pollution degree	2
Overvoltage category	II
<b>Approvals</b>	
Pending	cULus 61010-1, FM Div.2, ATEX zone 2, DNV, GL

<b>Dimensions</b>	
Length x width x height	mm 114.3 x 6.1 x 112.5
Clamping range (nominal / min. / max.)	mm <sup>2</sup> 2.5 / 0.5 / 2.5
<b>Note</b>	

**Ordering data**

Single-channel version	Type	Qty.
Double-channel version	ACT20M CI-CO-ILP-S	1
	ACT20M 2CI-2CO-ILP-S	1
		Order No.
		1176070000
		1176080000
<b>Note</b>		

**Accessories**

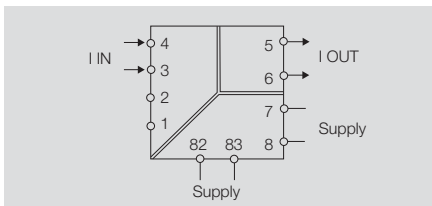
Marker	Type	Qty.
	MF 5/7.5 MC NEUTRAL	1
		Order No.
		1877680000
<b>Note</b>		



**DC isolator**

- Isolating DC signals
- Power supply via the DIN-rail-bus
- 3 way isolation

**ACT20M-CI-CO-S**



**Technical data**

<b>Input</b>	
Input current	0/4...20 mA
<b>Output</b>	
Output current	0/4...20 mA
Load resistance, current	< 600 Ω
<b>General data</b>	
Supply voltage	24 V DC ± 30 %
Ambient temperature (operational)	-25 °C...+70 °C
Storage temperature	-40 °C...+85 °C
Accuracy	< 0.05 % of measurement range
Temperature coefficient	< 0.01 % span/K
Cut-off-frequency	100 Hz
<b>Insulation coordination</b>	
Insulation voltage	2.5 kV
Rated voltage	300 V
Pollution degree	2
Overvoltage category	II
<b>Approvals</b>	
Pending	cULus 61010-1, FM Div.2, ATEX zone 2, DNV, GL

<b>Dimensions</b>	
Length x width x height	mm 114.3 x 6.1 x 112.5 mm
Clamping range (nominal / min. / max.)	mm² 2.5 / 0.5 / 2.5 mm²
<b>Note</b>	

**Ordering data**

Type	Qty.	Order No.
ACT20M-CI-CO-S	1	1175980000
<b>Note</b>		

**Accessories**

Type	Qty.	Order No.
MF 5/7.5 MC NEUTRAL		1877680000
<b>Note</b>		
DIN rail bus, refer to accessories page		

Rail bus accessories

Preliminary product data!

**CH20M BUS-PROFIL TS35x7.5/1000**

Support section for bus PCB



- Support section for TS35 x 7.5
- Length: 250, 500 or 750 mm

Ordering data

Type	Qty.	Order No.
CH20M BUS-PROFIL TS35x7.5/250	10	1248150000
CH20M BUS-PROFIL TS35x7.5/500	10	1248160000
CH20M BUS-PROFIL TS35x7.5/750	5	1248170000

**CH20M BUS-PROFIL TS35x15/1000**

Support section for bus PCB



- Support section for TS35 x 15
- Length: 250, 500 or 750 mm

Ordering data

Type	Qty.	Order No.
CH20M BUS-PROFIL TS35x15/250	5	1248180000
CH20M BUS-PROFIL TS35x15/500	5	1248190000
CH20M BUS-PROFIL TS35x15/750	5	1248210000

**CH20M BUS 4.50/05 AU/1000**

Bus PCB



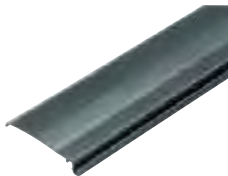
- Bus PCB for use on TS35 x 7.5 and TS 35 x 15
- Length: 250, 500 or 750 mm
- Five conductor paths, gold plated
- Electrical rating: 63 V AC, 5 A/conductor path

Ordering data

Type	Qty.	Order No.
CH20M BUS 4.50/05 AU/250	10	1248220000
CH20M BUS 4.50/05 AU/500	10	1248230000
CH20M BUS 4.50/05 AU/750	5	1248240000

**CH20M BUS-ADP TS35/1000**

Cover plate



- Cover plate for rail bus
- Length: 250, 500 or 750 mm

Ordering data

Type	Qty.	Order No.
CH20M BUS-ADP TS35/250	10	1248250000
CH20M BUS-ADP TS35/500	10	1248260000
CH20M BUS-ADP TS35/750	5	1248270000

**CH20M BUS-AP LI TS35x7.5 & 15**

End plate



- End plate for rail bus
- Fits on TS35 x 7.5 and TS 35 x 15
- left

Ordering data

Type	Qty.	Order No.
CH20M BUS-AP LI TS35x7.5 & 15	50	1193160000

**CH20M BUS-AP RE TS35x7.5 & 15**

End plate



- End plate for rail bus
- Fits on TS35 x 7.5 and TS 35 x 15
- right

Ordering data

Type	Qty.	Order No.
CH20M BUS-AP RE TS35x7.5 & 15	50	1193170000