

DC/DC 2-way isolator

Power supply on the output side

- Signal conversion
- Galvanic isolation between input/output signal
- Power supply can be cross-connected via plug-in jumpers

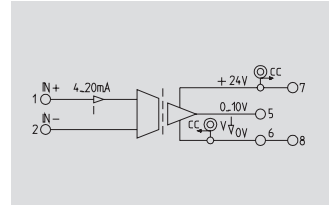
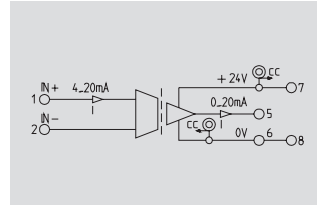
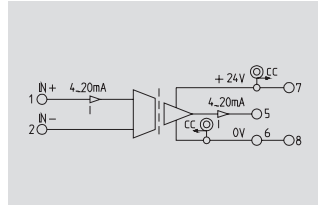
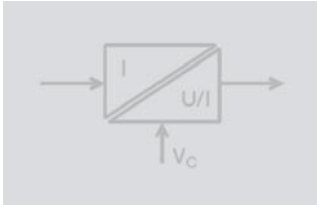
4...20mA/4...20mA



4...20mA/0...20mA



4...20mA/0...10V



Technical data

Input

Input voltage/Input current
Max. voltage
Max. current

Output

Output voltage/Output current
Load resistance voltage/Current
Accuracy
Temperature coefficient
Step response time
Cut-off freq. (-3dB)

General data

Supply voltage
Current consumption
Current-carrying cap. of cross-connect.
Operation temperature
Storage temperature
Approvals

Insulation coordinates

Standards
EMC standards
Rated voltage
Impulse withstand voltage
Isolation voltage Input, output/
Overvoltage category
Pollution severity
Clearance & creepage path

/4...20 mA (current loop)
7 V
25 mA

/4...20 mA
<math>< /math>
+/- 0.2% of final value
<math>< /math>
>= 15 Hz (typically 20 Hz)

24 Vdc +/- 20 %
< 32 mA at Iout = 20 mA
<math>< /math>
0 °C...+55 °C (fitted)
-20 °C...+85 °C
CSA / UL/UR / CE / ESD

EN 50178
EN 50081, EN50082, EN55011

300 V
4 kV
1.2 kVeff / 5s/
III
2
>= 3 mm

/4...20 mA (current loop)
7 V
25 mA

/0...20 mA
<math>< /math>
+/- 0.2% of final value
<math>< /math>
>= 15 Hz (typically 20 Hz)

24 Vdc +/- 20 %
< 32 mA at Iout = 20 mA
<math>< /math>
0 °C...+55 °C (fitted)
-20 °C...+85 °C
CSA / UL/UR / CE / ESD

EN 50178
EN 50081, EN50082, EN55011

300 V
4 kV
1.2 kVeff / 5s/
III
2
>= 3 mm

/4...20 mA (current loop)
7 V
25 mA

0...10 V/
>= 1 kΩ/
+/- 0.2% of final value
<math>< /math>
>= 15 Hz (typically 20 Hz)

24 Vdc +/- 20 %
< 20 mA at Iout = 10 mA
<math>< /math>
0 °C...+55 °C (fitted)
-20 °C...+85 °C
CSA / UL/UR / CE / ESD

EN 50178
EN 50081, EN50082, EN55011

300 V
4 kV
1.2 kVeff / 5s/
III
2
>= 3 mm

Dimensions

Clamping range (rating- / min. / max.) mm²
Length x width x height mm

Information

Screw connection	Tension clamp c.
2.50 / 0.50 / 2.50	1.50 / 0.50 / 2.50
92.4 x 12.5 x 112.4	92.4 x 12.5 x 112.4

Tu=23°C, single module

Screw connection	Tension clamp c.
2.50 / 0.50 / 2.50	1.50 / 0.50 / 2.50
92.4 x 12.5 x 112.4	92.4 x 12.5 x 112.4

Tu=23°C, single module

Screw connection	Tension clamp c.
2.50 / 0.50 / 2.50	1.50 / 0.50 / 2.50
92.4 x 12.5 x 112.4	92.4 x 12.5 x 112.4

Tu=23°C, single module

Ordering data

Type of connection

Screw connection
Tension clamp c.

Type	(Qty.=1)	Order No.
WAS4 CCC DC 4-20/4-20MA		8444980000
WAZ4 CCC DC 4-20/4-20MA		8444990000

Type	(Qty.=1)	Order No.
WAS4 CCC DC 4-20/0-20MA		8445010000
WAZ4 CCC DC 4-20/0-20MA		8445020000

Type	(Qty.=1)	Order No.
WAS4 CVC DC 4-20/0-10V		8445040000
WAZ4 CVC DC 4-20/0-10V		8445050000

Information

Accessories

Information

Voltage supply 24V and 0V with ZQV 2.5N/2 cross-connection

Voltage supply 24V and 0V with ZQV 2.5N/2 cross-connection

Voltage supply 24V and 0V with ZQV 2.5N/2 cross-connection

Articles with coloured order number are kept permanently in stock at the central warehouse in Germany.
Delivery times see page X.2

DC/DC 2-way isolator

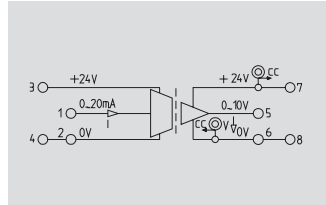
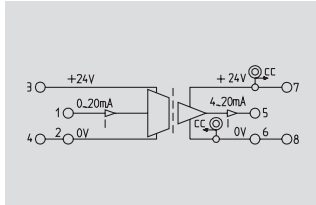
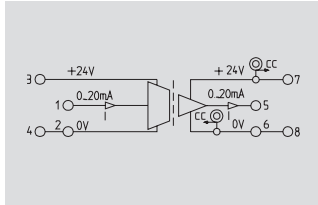
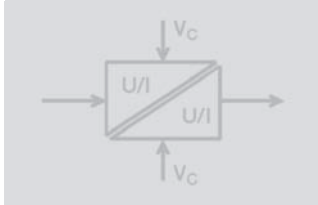
Double sided power supply

- Signal conversion
- Galvanic isolation between input/output signal
- Power supply can be cross-connected via plug-in jumpers

0...20mA/0...20mA

0...20mA/4...20mA

0...20mA/0...10V



Technical data

Input

Input voltage/Input current
Max. voltage/Max. current
Input resistance voltage/Current

Output

Output voltage/Output current
Load resistance voltage/Current
Accuracy
Temperature coefficient
Step response time
Cut-off freq. (-3dB)

General data

Supply voltage
Current consumption input
Current consumption output
Current-carrying cap. of cross-connect.
Operation temperature
Storage temperature
Approvals

Insulation coordinates

Standards
EMC standards
Rated voltage
Impulse withstand voltage
Isolation voltage Input, output
Overvoltage category
Pollution severity
Clearance & creepage path

/0...20 mA
/25 mA
/50 Ω

/0...20 mA
/< = 500 Ω
+/- 0.2% of final value
≤ 250 ppm/K of final value
≤ 30 ms (typically 16 ms)
≥ 15 Hz (typically 25 Hz)

24 Vdc +/- 20 %
< 11 mA at lin = 20 mA
< 32 mA at lout = 20 mA
≤ 2 A
0 °C...+55 °C (fitted)
-20 °C...+85 °C
CSA / UL/UR / CE / ESD

EN 50178
EN 50081, EN50082, EN55011
300 V
4 kV
1.2 kVeff / 5s
III
2
≥ 3 mm

/0...20 mA
/25 mA
/50 Ω

/4...20 mA
/< = 500 Ω
+/- 0.2% of final value
≤ 250 ppm/K of final value
≤ 30 ms (typically 16 ms)
≥ 15 Hz (typically 25 Hz)

24 Vdc +/- 20 %
< 11 mA at lin = 20 mA
< 32 mA at lout = 20 mA
≤ 2 A
0 °C...+55 °C (fitted)
-20 °C...+85 °C
CSA / UL/UR / CE / ESD

EN 50178
EN 50081, EN50082, EN55011
300 V
4 kV
1.2 kVeff / 5s
III
2
≥ 3 mm

/0...20 mA
/25 mA
/50 Ω

0...10 V/
≥ 1 kΩ/
+/- 0.2% of final value
≤ 250 ppm/K of final value
≤ 30 ms (typically 16 ms)
≥ 15 Hz (typically 25 Hz)

24 Vdc +/- 20 %
< 11 mA at lin = 20 mA
< 20 mA at lout = 10 mA
≤ 2 A
0 °C...+55 °C (fitted)
-20 °C...+85 °C
CSA / UL/UR / CE / ESD

EN 50178
EN 50081, EN50082, EN55011
300 V
4 kV
1.2 kVeff / 5s
III
2
≥ 3 mm

Dimensions

Clamping range (rating- / min. / max.) mm²
Length x width x height mm

Information

Screw connection Tension clamp c.
2.50 / 0.50 / 2.50 1.50 / 0.50 / 2.50
92.4 x 12.5 x 112.4 92.4 x 12.5 x 112.4

Tu=23°C, single module

Screw connection Tension clamp c.
2.50 / 0.50 / 2.50 1.50 / 0.50 / 2.50
92.4 x 12.5 x 112.4 92.4 x 12.5 x 112.4

Tu=23°C, single module

Screw connection Tension clamp c.
2.50 / 0.50 / 2.50 1.50 / 0.50 / 2.50
92.4 x 12.5 x 112.4 92.4 x 12.5 x 112.4

Tu=23°C, single module

Ordering data

Type of connection

Screw connection
Tension clamp c.

Type	(Qty.=1)	Order No.
WAS4 CCC DC 0-20/0-20MA		8445070000
WAZ4 CCC DC 0-20/0-20MA		8445080000

Type	(Qty.=1)	Order No.
WAS4 CCC DC 0-20/4-20MA		8446970000
WAZ4 CCC DC 0-20/4-20MA		8446990000

Type	(Qty.=1)	Order No.
WAS4 CVC DC 0-20/0-10V		8447020000
WAZ4 CVC DC 0-20/0-10V		8447030000

Information

Accessories

Information

Voltage supply 24V and 0V with ZQV 2.5N/2 cross-connection

Voltage supply 24V and 0V with ZQV 2.5N/2 cross-connection

Voltage supply 24V and 0V with ZQV 2.5N/2 cross-connection

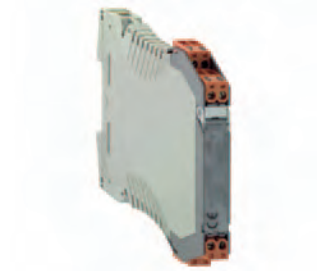
Articles with coloured order number are kept permanently in stock at the central warehouse in Germany.
Delivery times see page X.2

DC/DC 2-way isolator

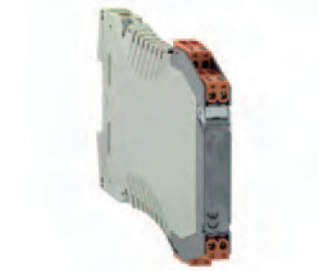
Double sided power supply

- Signal conversion
- Galvanic isolation between input/output signal
- Power supply can be cross-connected via plug-in jumpers

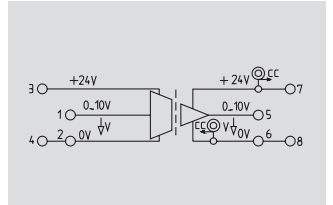
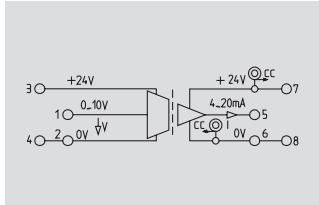
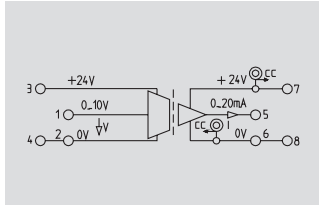
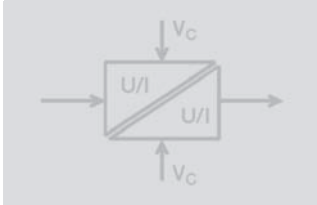
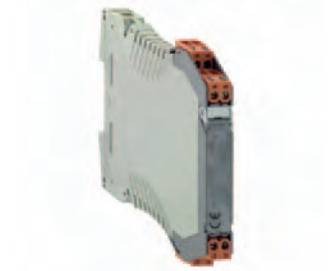
0...10V/0...20mA



0...10V/4...20mA



0...10V/0...10V



Technical data

Input

Input voltage/Input current
Max. voltage/Max. current
Input resistance voltage/Current

0...10 V/
15 V/
500 kΩ/

0...10 V/
15 V/
500 kΩ/

0...10 V/
15 V/
500 kΩ/

Output

Output voltage/Output current
Load resistance voltage/Current
Accuracy
Temperature coefficient
Step response time
Cut-off freq. (-3dB)

/0...20 mA
< = 500 Ω
+/- 0.2% of final value
<= 250 ppm/K of final value
<= 30 ms (typically 25 ms)
>= 13 Hz (typically 17 Hz)

/4...20 mA
< = 500 Ω
+/- 0.2% of final value
<= 250 ppm/K of final value
<= 30 ms (typically 25 ms)
>= 13 Hz (typically 17 Hz)

0...10 V/
>= 1 kΩ/
+/- 0.2% of final value
<= 250 ppm/K of final value
<= 30 ms (typically 25 ms)
>= 13 Hz (typically 17 Hz)

General data

Supply voltage
Current consumption input
Current consumption output
Current-carrying cap. of cross-connect.
Operation temperature
Storage temperature
Approvals

24 Vdc +/- 20 %
< 11 mA at U_{in} = 10 V
< 32 mA at I_{out} = 20 mA
<= 2 A
0 °C...+55 °C (fitted)
-20 °C...+85 °C
CSA / UL/UR / CE / ESD

24 Vdc +/- 20 %
< 11 mA at U_{in} = 10 V
< 32 mA at I_{out} = 20 mA
<= 2 A
0 °C...+55 °C (fitted)
-20 °C...+85 °C
CSA / UL/UR / CE / ESD

24 Vdc +/- 20 %
< 11 mA at U_{in} = 10 V
< 20 mA at I_{out} = 10 mA
<= 2 A
0 °C...+55 °C (fitted)
-20 °C...+85 °C
CSA / UL/UR / CE / ESD

Insulation coordinates

Standards
EMC standards
Rated voltage
Impulse withstand voltage
Isolation voltage Input, output
Overvoltage category
Pollution severity
Clearance & creepage path

EN 50178
EN 50081, EN50082, EN55011
300 V
4 kV
1.2 kVeff / 5s
III
2
>= 3 mm

EN 50178
EN 50081, EN50082, EN55011
300 V
4 kV
1.2 kVeff / 5s
III
2
>= 3 mm

EN 50178
EN 50081, EN50082, EN55011
300 V
4 kV
1.2 kVeff / 5s
III
2
>= 3 mm

Dimensions

Clamping range (rating- / min. / max.) mm²
Length x width x height mm

Screw connection **Tension clamp c.**
2.50 / 0.50 / 2.50 1.50 / 0.50 / 2.50
92.4 x 12.5 x 112.4 92.4 x 12.5 x 112.4

Screw connection **Tension clamp c.**
2.50 / 0.50 / 2.50 1.50 / 0.50 / 2.50
92.4 x 12.5 x 112.4 92.4 x 12.5 x 112.4

Screw connection **Tension clamp c.**
2.50 / 0.50 / 2.50 1.50 / 0.50 / 2.50
92.4 x 12.5 x 112.4 92.4 x 12.5 x 112.4

Information

Tu=23°C, single module

Tu=23°C, single module

Tu=23°C, single module

Ordering data

Type of connection

Screw connection
Tension clamp c.

Type	(Qty.=1)	Order No.
WAS4 VCC DC 0-10/0-20MA		8447050000
WAZ4 VCC DC 0-10/0-20MA		8447080000

Type	(Qty.=1)	Order No.
WAS4 VCC DC 0-10/4-20MA		8447100000
WAZ4 VCC DC 0-10/4-20MA		8447110000

Type	(Qty.=1)	Order No.
WAS4 VCC DC 0-10/0-10V		8447130000
WAZ4 VCC DC 0-10/0-10V		8447140000

Information

Accessories

Information

Voltage supply 24V and 0V with ZQV 2.5N/2 cross-connection

Voltage supply 24V and 0V with ZQV 2.5N/2 cross-connection

Voltage supply 24V and 0V with ZQV 2.5N/2 cross-connection

Articles with coloured order number are kept permanently in stock at the central warehouse in Germany.
Delivery times see page X.2