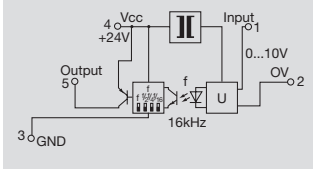
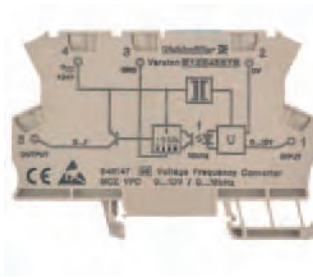


Frequency signal isolator/converter

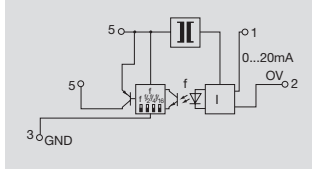
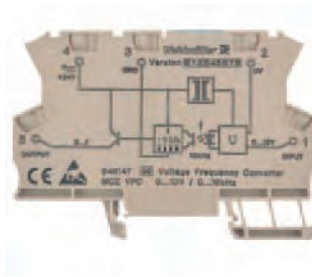
DC/f disconnecter converter

By the conversion of analog signals to frequency it is possible to read in analog signals out of the array via the counter-inputs of the controller.

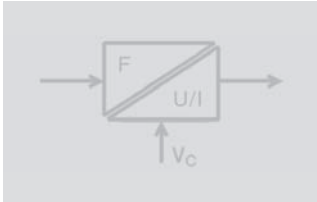
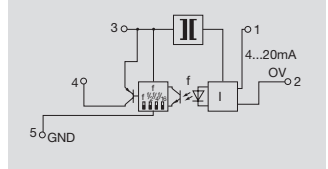
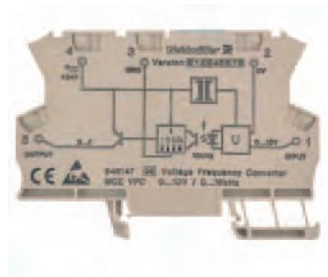
MCZ VFC



MCZ CFC



MCZ CFC



Technical data

Input

Input voltage/Input current
Max. voltage/Max. current
Input resistance voltage/Current
Voltage drop

Output

Output frequency/
Output level
Output current
Fine adjustment
Accuracy
Temperature coefficient
Status indicator

General data

Supply voltage
Current consumption
Current-carrying cap. of cross-connect.
Operation temperature
Storage temperature
Approvals

Insulation coordinates

Standards
EMC standards
Rated voltage
Impulse withstand voltage
Isolation voltage Input, output
Overvoltage category
Pollution severity
Clearance & creepage path

0...10 V/
30 V/
100 kΩ/

0...1/ 4/ 8/ 16 kHz/
PNP, Ub-0.7 V
max. 20 mA
+/- 10 %, internal
0.2% of FSR
<= 250 ppm/K
LED, pulsing

24 Vdc +/- 10 %
14 mA without load
<= 20 A
0 °C...+50 °C
-20 °C...+85 °C
CE / ESD

EN 50178
EN 50081, EN50082, EN55011
100 V
1.5 kV
1 kVdc
III
2
>= 1.5mm

Tension clamp c.

1.50 / 0.50 / 1.50
91.0 x 6.0 x 63.2

/0...20 mA
/50 mA
/50 Ω
1 V at 20 mA

0...1/ 4/ 8/ 16 kHz/
PNP, Ub-0.7 V
max. 20 mA
+/- 10 %, internal
0.2% of FSR
<= 250 ppm/K
LED, pulsing

24 Vdc +/- 10 %
14 mA without load
0 °C...+50 °C
-20 °C...+85 °C
CE / ESD

EN 50178
EN 50081, EN50082, EN55011
100 V
1.5 kV
1 kVdc
III
2
>= 1.5mm

Tension clamp c.

1.50 / 0.50 / 1.50
91.0 x 6.0 x 63.2

/4...20 mA (current loop)
/50 mA
/
5.8...6.4 V at 20 mA

0...1/ 4/ 8/ 16 kHz/
PNP, Ub-0.7 V
max. 20 mA
+/- 10 %, internal
0.15 % of FSR
<= 250 ppm/K
LED, pulsing

24 Vdc +/- 20 %
14 mA without load
0 °C...+50 °C
-20 °C...+85 °C
CE / ESD

EN 50178
EN 50081, EN50082, EN55011
150 V
2.5 kV
III
2
>= 2 mm

Tension clamp c.

1.50 / 0.50 / 1.50
91.0 x 6.0 x 63.2

Without DC/DC-converter input is current-loop-fed

Ordering data

Type of connection

Tension clamp c.

Type	(Qty.=1)	Order No.
MCZ VFC 0-10V		8461470000

Type	(Qty.=1)	Order No.
MCZ CFC 0-20MA		8461480000

Type	(Qty.=1)	Order No.
MCZ CFC 4-20MA		8461490000

Information

Accessories

Information

Voltage supply 24V,0V and GND with ZQV 4/x cross-connection

Voltage supply 24V,0V and GND with ZQV 4/x cross-connection

Voltage supply 24V,0V and GND with ZQV 4/x cross-connection

Articles with coloured order number are kept permanently in stock at the central warehouse in Germany.
Delivery times see page X.2