

Overvoltage protection for measurement and control engineering

EGU 3 50 mA

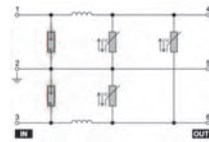
e.g. for circuit loops

Dimensions:

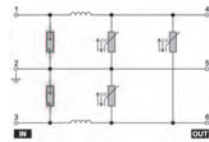
l x w x h = 58 x 95 x 22.5 mm



Main line circuit diagram



Main line circuit diagram



Data	
Current per path max	50 mA
Resistance per path max	18 Ω
Model, protection	EG 3 IP20
Screw connection	0,5 ... 4 mm ²

Type	Order no.
EGU 3, 24 Vuc	0250560000
EGU 3, 48 Vuc	0250660000
EGU 3, 115 Vuc	9311530000
EGU 3, 230 Vuc	0250860000

Order data

Technical data

Voltage, Un 1.3:	24 Vuc
Voltage, Uc 1.3:	30 Vac / 38 Vdc
Rated data of components	Gas charge eliminator: 90 V 5 kA
	Varistor: 30 V
Cut-off frequency (-3dB/load impedance):	10 kHz / 500 Ω
Leakage current, Imax. (8/20µs) typical:	6 kA
Protection level on output side, symmetrical for 1 kV/µs pulse at input, typical	55 V
for 8/20µs (rated leakage current), typical	75 V
Level of protection on output side, asymmetrical for 1 kV/µs pulse at input, typical	85 V
for 8/20 µs (rated leakage current), typical	105 V

Type	Order no.
EGU 3, 24 Vuc	0250560000
EGU 3, 48 Vuc	0250660000
EGU 3, 115 Vuc	9311530000
EGU 3, 230 Vuc	0250860000

Type	Order no.
EGU 3, 24 Vuc	0250560000
EGU 3, 48 Vuc	0250660000
EGU 3, 115 Vuc	9311530000
EGU 3, 230 Vuc	0250860000

Type	Order no.
EGU 3, 24 Vuc	0250560000
EGU 3, 48 Vuc	0250660000
EGU 3, 115 Vuc	9311530000
EGU 3, 230 Vuc	0250860000

Type	Order no.
EGU 3, 24 Vuc	0250560000
EGU 3, 48 Vuc	0250660000
EGU 3, 115 Vuc	9311530000
EGU 3, 230 Vuc	0250860000

EGU 3 1.5 A

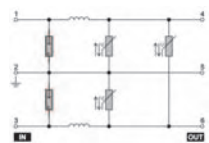
e.g. for power supply

Dimensions:

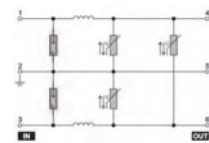
l x w x h = 58 x 95 x 22.5 mm



Main line circuit diagram



Main line circuit diagram



Data	
Current per path max	1,5 A
Resistance per path max	0,1 Ω
Model, protection	EG 3 IP20
Screw connection	0,5 ... 4 mm ²

Type	Order no.
EGU 3, 24 Vuc	1186760000
EGU 3, 48 Vuc	1186960000
EGU 3, 115 Vuc	1186860000
EGU 3, 230 Vuc	1187060000

Order data

Technical data

Voltage, Un 1.3:	24 Vuc
Voltage, Uc 1.3:	30 Vac / 38 Vdc
Rated data of components	Gas charge eliminator: 90 V 5 kA
	Varistor: 30 V
Cut-off frequency (-3dB/load impedance):	300 kHz / 16 Ω
Leakage current, Imax. (8/20µs) typical:	6 kA
Protection level on output side, symmetrical for 1 kV/µs pulse at input, typical	55 V
for 8/20µs (rated leakage current), typical	75 V
Level of protection on output side, asymmetrical for 1 kV/µs pulse at input, typical	85 V
for 8/20 µs (rated leakage current), typical	105 V

Type	Order no.
EGU 3, 24 Vuc	1186760000
EGU 3, 48 Vuc	1186960000
EGU 3, 115 Vuc	1186860000
EGU 3, 230 Vuc	1187060000

Type	Order no.
EGU 3, 24 Vuc	1186760000
EGU 3, 48 Vuc	1186960000
EGU 3, 115 Vuc	1186860000
EGU 3, 230 Vuc	1187060000

Type	Order no.
EGU 3, 24 Vuc	1186760000
EGU 3, 48 Vuc	1186960000
EGU 3, 115 Vuc	1186860000
EGU 3, 230 Vuc	1187060000

Type	Order no.
EGU 3, 24 Vuc	1186760000
EGU 3, 48 Vuc	1186960000
EGU 3, 115 Vuc	1186860000
EGU 3, 230 Vuc	1187060000

EGU 4 0.1 A

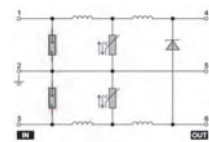
e.g. for circuit loops

Dimensions:

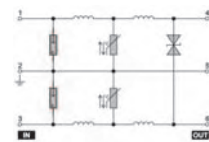
l x w x h = 58 x 95 x 22.5 mm



Main line circuit diagram



Main line circuit diagram



Data	
Current per path max	100 mA
Resistance per path max	22 Ω
Model, protection	EG 3 IP20
Screw connection	0,5 ... 4 mm ²

Type	Order no.
EGU 4, 24 Vdc	0459460000
EGU 4, 48 Vuc	0461860000
EGU 4, 115 Vuc	0461960000
EGU 4, 230 Vuc	0462060000

Order data

Technical data

Voltage, Un 1.3:	24 Vdc
Voltage, Uc 1.3:	28 Vdc
Rated data of components	Gas charge eliminator: 90 V 5 kA
	Varistor: 30 V
	Suppressor diode: 33 V
Cut-off frequency (-3dB/load impedance):	5 kHz / 240 Ω
Leakage current, Imax. (8/20µs) typical:	6 kA
Protection level on output side, symmetrical for 1 kV/µs pulse at input, typical	33 V
for 8/20µs (rated leakage current), typical	45 V
Level of protection on output side, asymmetrical for 1 kV/µs pulse at input, typical	48 V
for 8/20 µs (rated leakage current), typical	90 V

Type	Order no.
EGU 4, 24 Vdc	0459460000
EGU 4, 48 Vuc	0461860000
EGU 4, 115 Vuc	0461960000
EGU 4, 230 Vuc	0462060000

Type	Order no.
EGU 4, 24 Vdc	0459460000
EGU 4, 48 Vuc	0461860000
EGU 4, 115 Vuc	0461960000
EGU 4, 230 Vuc	0462060000

Type	Order no.
EGU 4, 24 Vdc	0459460000
EGU 4, 48 Vuc	0461860000
EGU 4, 115 Vuc	0461960000
EGU 4, 230 Vuc	0462060000

Type	Order no.
EGU 4, 24 Vdc	0459460000
EGU 4, 48 Vuc	0461860000
EGU 4, 115 Vuc	0461960000
EGU 4, 230 Vuc	0462060000

Articles with coloured order number are kept permanently in stock at the central warehouse in Germany.
Delivery times see page X.2

Overvoltage protection for measurement and control engineering

EGU 4 1.5 A

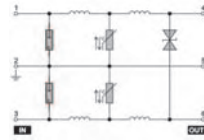
e.g. for power supply

Dimensions:

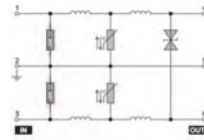
l x w x h = 58 x 95 x 22.5 mm



Main line circuit diagram



Main line circuit diagram



Data	
Current per path max	1,5 A
Resistance per path max	0,1 Ω
Model, protection	EG 3 IP20
Screw connection	0,5 ... 4 mm ²

Type	Order no.
EGU 4, 24 Vuc	1170960000
EGU 4, 48 Vuc	1171060000
EGU 4, 115 Vuc	1171160000
EGU 4, 230 Vuc	1171260000

Order data	
Technical data	
Voltage, Un 1.3:	24 Vuc
Voltage, Uc 1.3:	34 Vac / 26,5 Vdc
Rated data of components	Gas charge eliminator: 90 V 5 kA
	Varistor: 30 V
	Suppressor diode: 33 V
Cut-off frequency (-3dB/load impedance):	250 kHz / 16 Ω
Leakage current, Imax. (8/20µs) typical:	6 kA
Protection level on output side, symmetrical	
for 1 kV/µs pulse at input, typical	33 V
for 8/20µs (rated leakage current), typical	45 V
Level of protection on output side, asymmetrical	
for 1 kV/µs pulse at input, typical	48 V
for 8/20 µs (rated leakage current), typical	90 V

Type	Order no.
EGU 4, 24 Vuc	1170960000
EGU 4, 48 Vuc	1171060000
EGU 4, 115 Vuc	1171160000
EGU 4, 230 Vuc	1171260000

Type	Order no.
EGU 4, 24 Vuc	48 Vuc
EGU 4, 48 Vuc	53 Vac / 75 Vdc
EGU 4, 115 Vuc	230 V 5 kA
EGU 4, 230 Vuc	230 V 5kA
	55 V
	48 V
	500 kHz / 32 Ω
	6 kA
	82 V
	130 V
	110 V
	150 V

Type	Order no.
EGU 4, 115 Vuc	1171160000
EGU 4, 230 Vuc	1171260000
	115 Vuc
	130 Vac / 170 Vdc
	230 V 5kA
	75 V
	120 V
	800 kHz / 70 kΩ
	6 kA
	200 V
	250 V
	310 V
	350 V

Type	Order no.
EGU 4, 230 Vuc	1171260000
	230 Vuc
	250 Vac / 320 Vdc
	600 V 20 kA
	275 V
	240 V
	1 Mhz / 150 kΩ
	24 kA
	400 V
	420 V
	390 V
	480 V

EGU 4 0.1 A

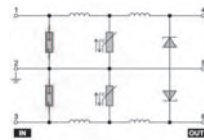
Z.B. für symmetrical loads

Abmessungen:

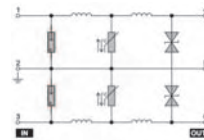
LxBxH = 58x95x22,5 mm



Main line circuit diagram



Main line circuit diagram



Data	
Current per path max	100 mA
Resistance per path max	12 Ω
Model, protection	EG 3 IP20
Screw connection	0,5 ... 4 mm ²

Type	Order no.
EGU 4, 24 Vdc	1170560000
EGU 4, 48 Vuc	1170660000
EGU 4, 115 Vuc	1170760000
EGU 4, 230 Vuc	1170860000

Order data	
Technical data	
Voltage, Un 1.3:	24 Vdc
Voltage, Uc 1.3:	31 Vdc
Rated data of components	Gas charge eliminator: 90 V 5 kA
	Varistor: 30 V
	Suppressor diode: 33 V
Cut-off frequency (-3dB/load impedance):	5 kHz / 240 Ω
Leakage current, Imax. (8/20µs) typical:	6 kA
Protection level on output side, symmetrical	
for 1 kV/µs pulse at input, typical	33 V
for 8/20µs (rated leakage current), typical	45 V
Level of protection on output side, asymmetrical	
for 1 kV/µs pulse at input, typical	66 V
for 8/20 µs (rated leakage current), typical	110 V

Type	Order no.
EGU 4, 24 Vdc	1170560000
EGU 4, 48 Vuc	1170660000
EGU 4, 115 Vuc	1170760000
EGU 4, 230 Vuc	1170860000

Type	Order no.
EGU 4, 24 Vdc	48 V uc
EGU 4, 48 Vuc	55 Vac / 75 Vdc
EGU 4, 115 Vuc	230 V 5 kA
EGU 4, 230 Vuc	230 V 5 kA
	55 V
	48 V
	20 kHz / 480 Ω
	6 kA
	82 V
	130 V
	170 V
	190 V

Type	Order no.
EGU 4, 115 Vuc	1170760000
EGU 4, 230 Vuc	1170860000
	115 Vuc
	130 Vac / 170 Vdc
	230 V 5 kA
	75 V
	120 V
	40 kHz / 1200 Ω
	6 kA
	200 V
	250 V
	400 V
	480 V

Type	Order no.
EGU 4, 230 Vuc	1170860000
	230 Vuc
	250 Vac / 320 Vdc
	600 V 20 kA
	275 V
	240 V
	80 khz / 2,2 kΩ
	24 kA
	350 V
	420 V
	700 V
	880 V

Articles with coloured order number are kept permanently in stock at the central warehouse in Germany.
Delivery times see page X.2