

# PCB Terminals and Connectors

Capabilities Brochure

Clearwater Tech - Phone: 800.894.0412 - Fax: 208.368.0415 - Web: [www.clrwtr.com](http://www.clrwtr.com) - Email: [info@clrwtr.com](mailto:info@clrwtr.com)

**Weidmüller** 

# Connectivity Solutions are a Matter of...



## Application Knowledge

With over 60 years in the industry, Weidmuller offers unmatched depth in thousands of customer applications spanning countries around the world. Not only has our close collaboration inspired new products, it has given us the knowledge to guide you in selecting the connectivity solution that most efficiently meets your needs.

## Technical Expertise

Weidmuller has a well-deserved reputation for innovative design and high-quality materials in a broad range of interface products. We are committed to bringing new technology to the marketplace, simplifying traditional tasks and creating new opportunities for our customers. Our commitment to excellence is the reason Weidmuller was the first U.S. supplier of terminal blocks and other interface products to earn ISO 9001 certification.

## Being Responsive

At Weidmuller, we are dedicated to providing our customers with the most responsive service possible. Experienced application engineers and sales representatives deployed around the country are ready to provide technical support. And thanks to our extensive distribution network, we can ensure that our customers receive the products they need when they need them.

## Value-Added Service

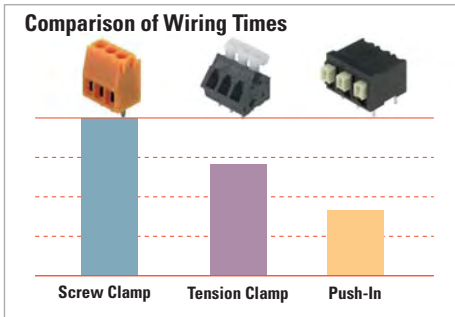
At Weidmuller, we do more than provide our customers with the highest quality products at a competitive price. Our in-house value-added group uses a range of technologies to design products that will solve your toughest printed circuit board problems. We provide an extensive array of selection guides as well as computerized and web-based tools to make it easier to design Weidmuller PCB products for your application.

## Manufacturing Expertise

Weidmuller has manufacturing facilities and warehouses located strategically throughout the world. If your projects or business expands to global markets and locations, Weidmuller is there to provide manufacturing, design and streamlined logistical support.



# Helping Customers Get Better Connected



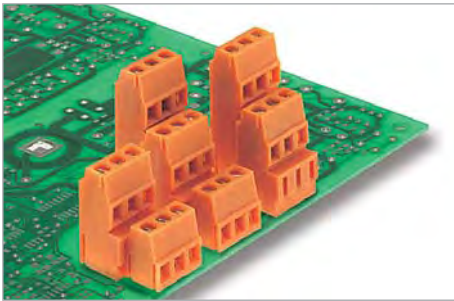
At Weidmuller, we understand the best way to help our customers is two-fold. First, we must make Printed Circuit Board products that are reliable and provide a secure connection with little to no distortion. They need to perform under all types of conditions, including high-vibration, contamination and extreme environments. And they need to be cost-effective. Second, and equally important is our need to understand our customers' application. We do this by asking our customers the right questions:

- **What type of clamping system do you need?**
- **Is board space a premium?**
- **How do you need to bring the wires to your application?**
- **What is the manufacturing process in mounting the PCB products?**
- **What is the real cost of the product from design, production, procurement, installation and support throughout the world?**
- **How do we help you make the most efficient use of board space, production time and procurement time?**



## Clamping Systems

Whether you need screw, tension clamp, or Push-in technology, Weidmuller will help solve your clamping applications. Our products feature a universal screw so that if your customer uses a Flat or Phillips screwdriver they can still use our products. No matter what your application requires, you will benefit from each of our clamping technologies.



## Board Space

With board space at a premium, we offer single row, double row and triple row products in a range of sizes and angles to fit any application. Our double row components create space-efficient configurations with a smaller footprint than fixed-pole products.

In addition, we feature connection technology that will allow you to reduce inventory. Select a 2 or 3-pole product and build the required solution, eliminating the need to stock multiple pole configurations.



## Processing Options

From through-hole reflow methods, to high temperature applications Weidmuller's PCB product line can help reduce size and packaging with our unique Tape-on-reel and tray packaging for pick and place machines. Our comprehensive portfolio of PCB components for through-hole reflow technology fulfills all the optimization requirements, creating a pure SMT assembly and soldering process. Taking advantage of this technology can lead to a reduction of manufacturing costs by up to 30%.

## Product Models

Weidmuller's PCB products offer features such as different colors, specialized marking and gold plating to help you meet your application needs into today's competitive marketplace.



## Service and Support

Weidmuller has offices throughout the globe, staffed with experienced personnel ready to provide technical knowledge and support for your design and application requirements, regardless of location. We are committed to providing you the very best connectivity solutions through careful and thorough evaluation of your needs.

**Engage Your Weidmuller Support Team Today!**

# Printed Circuit Board Terminals

PCB Terminals	3.5 mm		3.81 mm	5.00 mm			
	Screw		Push-In	Screw		Tension Clamp	Push-In
	Clamping Yoke	Leaf Spring		Clamping Yoke	Leaf Spring		
<b>Orientation</b>							
90°	● ●	●	●	●	●		●
135°	● ●		●	●	●	● ● ● ●	●
180°			●	●	●		●
<b>Additional Options</b>							
Surface Mount			●	●			●
Tape-on-Reel Packaging			●	●			●
Double Row	●				●		
Triple Row							
Operating Lever						● ● ● ●	
Raised Profile	●				●		
Fixing Flange					●		
Test Point					●		

# Printed Circuit Board Connectors

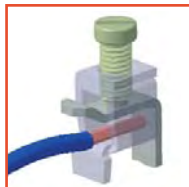
PCB Plugs	3.5 mm			3.81 mm		5.00 mm		
	Screw	Tension Clamp	Push-In	Screw	Push-In	Screw		
	Clamping Yoke			Clamping Yoke		Clamping Yoke	Leaf Spring	Tension Clamp
<b>Orientation</b>								
90°	● ●			● ●		● ●		
180°	● ●	● ●	● ●	● ●		● ●	● ●	● ●
225°								
270°	● ●			● ●		● ●		
<b>Additional Options</b>								
Screw Flange	● ●	● ●	● ●	● ●	<b>Coming Soon</b>	● ●		
Interlocking Flange								
Double Density		● ●	● ●					
LEDs			● ●					
Release Lever	● ●	● ●	● ●	● ●				
Lock & Release Lever								
Rail Mount								
Male Plug for Plug to Plug Connection								
Solder Pins on Plug								
<b>PCB Headers</b>	3.5 mm		3.81 mm		5.00 mm			
<b>Orientation</b>	Open End	Closed End	Closed End		Open End	Closed End		
90°	●	● ●	● ●	● ●	● ●			
135°		● ●			●			
180°		● ●			● ●			
270°								
<b>Additional Options</b>								
Double Row		●						
Double Density		●						
Low Level								
High Level								
Surface Mount		●		●	●			
Surface Mount with Solder Flange								
Tape-on-Reel Packaging		●		●	●			
Screw Flange		● ●		● ●				
Interlocking Flange								
Offset		●						

## Available Color Choices

- Orange
- Black
- Green
- Gray

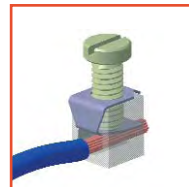
\*Additional colors available on request

## Clamping Systems



### Clamping Yoke

- Internationally established technology
- High vibration resistance
- High contact force
- Large cross section
- Consistently low transition resistance



### Leaf Spring

- Internationally established technology
- Cost effective
- Low profile



### TOP C

- Internationally established technology
- Ideal for mounting in simplified design



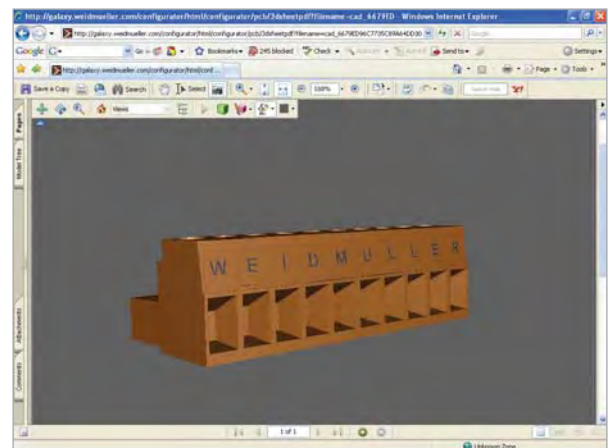
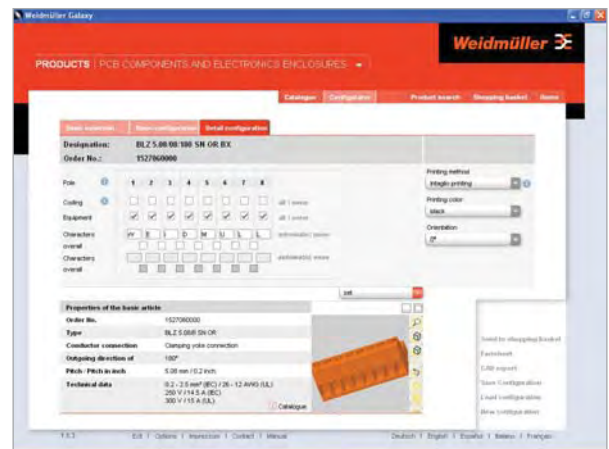
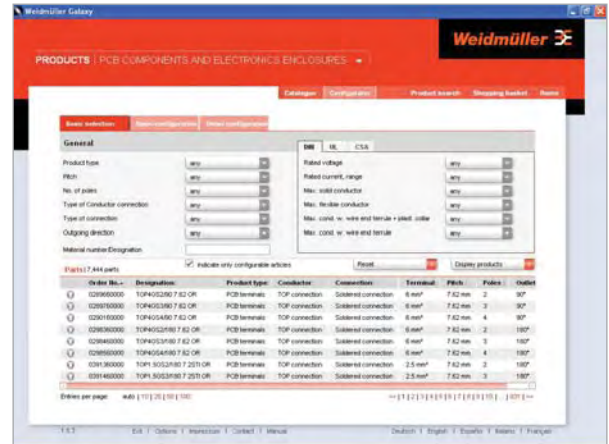


# Galaxy Configuration Software

The attached Galaxy Software CD is a valuable free tool that will help you "design in" PCB terminal and connector technology for your applications. Be sure to register your copy at [galaxy.weidmuller.com](http://galaxy.weidmuller.com) to receive updates to product and technical information.

## FEATURES

- Weidmuller's complete e-catalog of over 15,000 Printed Circuit Board Products
- Product searches in either full text or product number
- Competitor cross reference
- Simplify the product selection process through easy-to-use configuration tools
- Choose the connection technology that fits your application
- Presentations on features, functions and benefits of PCB product technologies
- Dropdown menu to search by:
  - Pitch
  - Voltage
  - Amperage
  - Wire Gauge
- Create drawings
- Generate data sheets
- 3D views of selected products
- 2D, 3D and CAD data export functions
- Real time look at custom marked products



Clearwater Tech - Phone: 800.894.0412 - Fax: 208.368.0415 - Web: [www.clrwr.com](http://www.clrwr.com) - Email: [info@clrwr.com](mailto:info@clrwr.com)