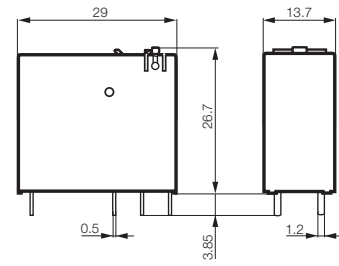


Relay couplers - RIDERSERIES

RCI relay 1 CO contact AC/DC coil

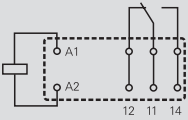
- 4000 VA breaking capacity
- Sturdy plug-in connection
- Optional test button with lock function and window
- Optional status indicator
- Optional suppressor



Circuit diagram

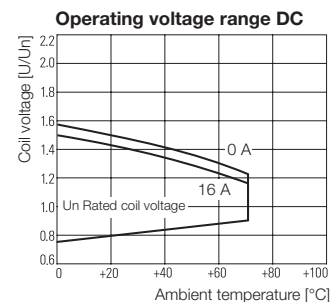
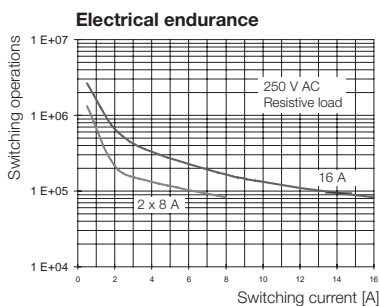
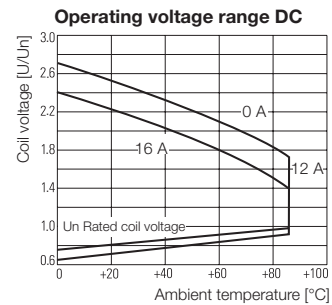
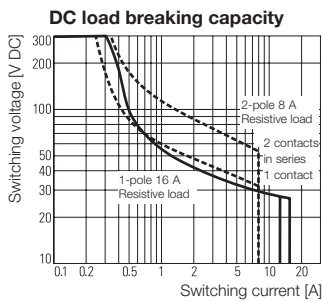
View of connections
Dimensions in mm

1 C/O changeover contact



Output	
max. switching voltage AC	250 V
Continuous current	16 A
Contact base material	AgNi 90/10
Mechanical endurance	AC coil 5x10 ⁶ / DC coil 10x10 ⁶ switching operations
Response time / Drop-out time	7 ms / 3 ms
Rated data	
Status indicator / Free wheel diode	see ordering data
Operating temperature	-40 °C...+70 °C
UL 94 flammability rating	V-0
Approvals	cURus; VDE; CE;
Insulation coordination (IEC 60664)	
Rated voltage	250 V
Creepage and clearance path input - output	8 mm
Overtoltage category	III
Pollution severity	3
Protective separation to VDE 0106 part 101	yes
Dimensions	
Length x width x height	mm 29 / 13.7 / x
Note	
x = 25.5 without test button / 26.7 with test button	

Applications



RCI relay
1 CO contact AC/DC coil

Type code

RCI				
-----	--	--	--	--

Type RIDER Control Industrial

Type of construction
3 1-pole, 16 A
4 2-pole, 8 A

Type of contact
1 1 CO contact without test button
2 2 CO contacts without test button
7 1 CO contact with test button
8 2 CO contacts with test button

Contact material
4 AgNi 90/10

Coil	
012	12 V DC
024	24 V DC
048	48 V DC
110	110 V DC
524	24 V AC
615	115 V AC
730	230 V AC
AB2	12 V DC+LED+diode
AC4	24 V DC+LED+diode
AE8	48 V DC+LED+diode
BB0	110 V DC+LED+diode
R24	24 V AC+LED
S15	115 V AC+LED
T30	230 V AC+LED

Ordering data

Input	12 V DC 1CO	24 V DC 1CO	48 V DC 1CO	110 V DC 1CO
Rated voltage	12 V DC	24 V DC	48 V DC	110 V DC
DC Response/dropout Volt	8,4 V / 1,2 V	16,8 V / 2,4 V	33,6 V / 4,8 V	77 V / 11 V
Power rating	400 mW	400 mW	400 mW	400 mW
Rated current DC	33,3 mA	16,7 mA	8,7 mA	4,1 mA
Coil resistance	360 Ω ±10%	1440 Ω ±10%	5620 Ω ±10%	26600 Ω ±12%

Ordering data
Relais

	12 V DC 1CO	24 V DC 1CO	48 V DC 1CO	110 V DC 1CO
Standard Type	RCI314012	RCI314024	RCI314048	RCI314110
Order No.	8869800000	8869810000	8869820000	8869830000
with test button Type	RCI374012	RCI374024	RCI374048	RCI374110
Order No.	8869950000	8869960000	8869970000	8869980000
with LED + protective diode* Type	RCI314AB2	RCI314AC4	RCI314AE8	RCI314BB0
Order No.	8870090000	8870100000	8870110000	8870120000
with test button + LED Type	RCI374AB2	RCI374AC4	RCI374AE8	RCI374BB0
+ protective diode* Order No.	8870240000	8870250000	8870260000	8870270000

Note
*Protective diode only with DC input

Ordering data

Input	24 V AC 1CO	115 V AC 1CO	230 V AC 1CO
Rated voltage	24 V AC	115 V AC	230 V AC
AC Response/dropout Volt	18 V / 3,6 V	86,3 V / 17,3 V	172,5 V / 34,5 V
Power rating	0,75 VA	0,75 VA	0,75 VA
Rated current AC	31,6 mA	6,6 mA	3,2 mA
Coil resistance	350 Ω ±10%	8100 Ω ±15%	32500 Ω ±15%

Ordering data
Relais

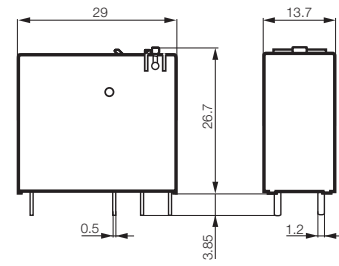
	24 V AC 1CO	115 V AC 1CO	230 V AC 1CO
Standard Type	RCI314524	RCI314615	RCI314730
Order No.	8869840000	8869850000	8869860000
with test button Type	RCI374524	RCI374615	RCI374730
Order No.	8869990000	8870000000	8870010000
with LED Type	RCI314R24	RCI314S15	RCI314T30
Order No.	8870130000	8870140000	8870150000
with test button + LED Type	RCI374R24	RCI374S15	RCI374T30
Order No.	8870280000	8870290000	8870300000

Note

Relay couplers - RIDERSERIES

RCI relay 2 CO contact AC/DC coil

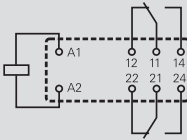
- 2000 VA breaking capacity
- Sturdy plug-in connection
- Optional test button with lock function and window
- Optional status indicator
- Optional suppressor



Circuit diagram

View of connections
Dimensions in mm

2 C/O changeover contacts



Output

max. switching voltage AC	250 V
Continuous current	8 A / 1 contact
Contact base material	AgNi 90/10
Mechanical endurance	AC coil 5x10 ⁶ / DC coil 10x10 ⁶ switching operations
Response time / Drop-out time	7 ms / 2 ms

Rated data

Status indicator / Free wheel diode	see ordering data
Operating temperature	-40 °C...+70 °C
UL 94 flammability rating	V-0
Approvals	cURus; VDE;

Insulation coordination (IEC 60664)

Rated voltage	250 V
Creepage and clearance path input - output	8 mm
Overtoltage category	III
Pollution severity	3
Protective separation to VDE 0106 part 101	yes

Dimensions

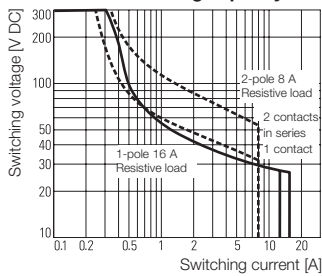
Single relay

Length x width x height	mm	29 / 13.7 / x
-------------------------	----	---------------

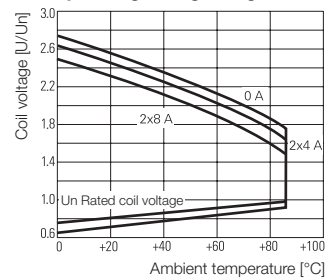
Note x = 25.5 without test button / 26.7 with test button

Applications

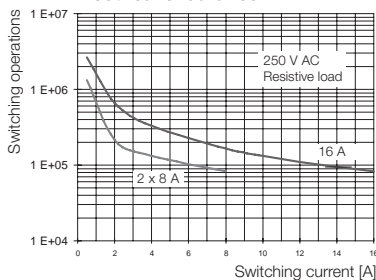
DC load breaking capacity



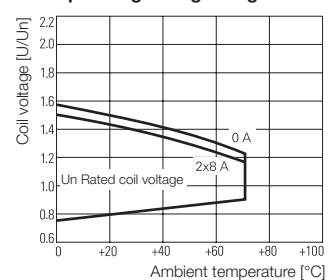
Operating voltage range DC



Electrical endurance



Operating voltage range DC



RCI relay
2 CO contact AC/DC coil

Type code

RCI				
-----	--	--	--	--

Type **RIDER Control Industrial**

Type of construction
 3 1-pole, 16 A
 4 2-pole, 8 A

Type of contact
 1 1 CO contact without test button
 2 2 CO contacts without test button
 7 1 CO contact with test button
 8 2 CO contacts with test button

Contact material
 4 AgNi 90/10

Coil	
012	12 V DC
024	24 V DC
048	48 V DC
110	110 V DC
524	24 V AC
615	115 V AC
730	230 V AC
AB2	12 V DC+LED+diode
AC4	24 V DC+LED+diode
AE8	48 V DC+LED+diode
BB0	110 V DC+LED+diode
R24	24 V AC+LED
S15	115 V AC+LED
T30	230 V AC+LED

Ordering data

Input	12 V DC 2CO	24 V DC 2CO	48 V DC 2CO	110 V DC 2CO
Rated voltage	12 V DC	24 V DC	48 V DC	110 V DC
DC Response/dropout Volt	8,4 V / 1,2 V	16,8 V / 2,4 V	33,6 V / 4,8 V	77 V / 11 V
Power rating	400 mW	400 mW	400 mW	400 mW
Rated current DC	33,3 mA	16,7 mA	8,7 mA	4,1 mA
Coil resistance	360 Ω ±10%	1440 Ω ±10%	5620 Ω ±10%	26600 Ω ±12%

Ordering data Relais				
Standard Type	RCI424012	RCI424024	RCI424048	RCI424110
Order No.	8869870000	8869890000	8869900000	8869910000
with test button Type	RCI484012	RCI484024	RCI484048	RCI484110
Order No.	8870020000	8870030000	8870040000	8870050000
with LED + protective diode* Type	RCI424AB2	RCI424AC4	RCI424AE8	RCI424BB0
Order No.	8870170000	8870180000	8870190000	8870200000
with test button + LED Type	RCI484AB2	RCI484AC4	RCI484AE8	RCI484BB0
+ protective diode* Order No.	8870310000	8870320000	8870330000	8870340000
Note				
*Protective diode only with DC input				

Ordering data

Input	24 V AC 2CO	115 V AC 2CO	230 V AC 2CO	
Rated voltage	24 V AC	115 V AC	230 V AC	
AC Response/dropout Volt	18 V / 3,6 V	86,3 V / 17,3 V	172,5 V / 34,5 V	
Power rating	0,75 VA	0,75 VA	0,75 VA	
Rated current AC	31,6 mA	6,6 mA	3,2 mA	
Coil resistance	350 Ω ±10%	8100 Ω ±15%	32500 Ω ±15%	

Ordering data Relais				
Standard Type	RCI424524	RCI424615	RCI424730	
Order No.	8869920000	8869930000	8869940000	
with test button Type	RCI484524	RCI484615	RCI484730	
Order No.	8870060000	8870070000	8870080000	
with LED Type	RCI424R24	RCI424S15	RCI424T30	
Order No.	8870210000	8870220000	8870230000	
with test button + LED Type	RCI484R24	RCI484S15	RCI484T30	
Order No.	8870350000	8870360000	8870370000	
Note				