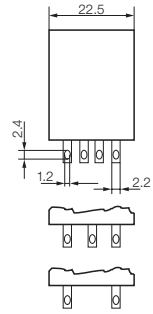


Relay couplers - RIDERSERIES

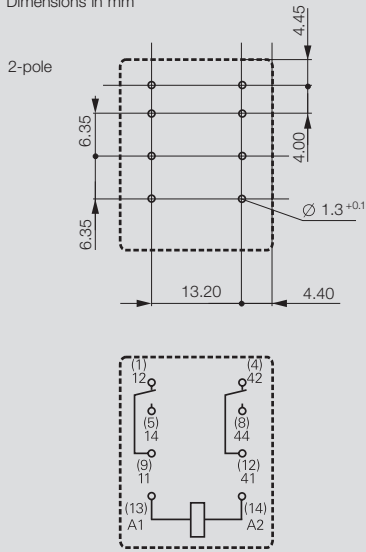
RCM relay 2 CO contact AC/DC coil

- 3000 VA switching capacity
- Solder and plug connection
- Safe-to-touch test button, selectable locking
- White labelling panel



Circuit diagram

View of connections
Dimensions in mm



Output

| | |
|-------------------------------|--|
| max. switching voltage AC | 250 V |
| Continuous current | 12 A |
| Contact base material | AgNi 90/10 |
| Mechanical endurance | AC coil 20x10 ⁶ / DC coil 30x10 ⁶ switching operations |
| Response time / Drop-out time | 15ms / 10ms |

Rated data

| | |
|-------------------------------------|-------------------|
| Status indicator / Free wheel diode | see ordering data |
| Operating temperature | -40 °C...+70 °C |
| UL 94 flammability rating | V-0 |
| Approvals | cURus; CE; VDE; |

Insulation coordination (IEC 60664)

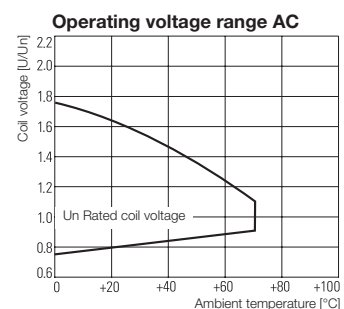
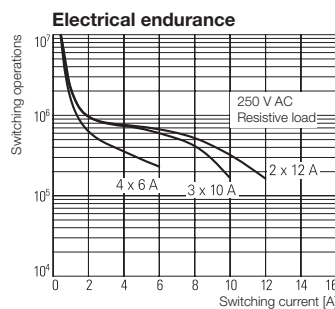
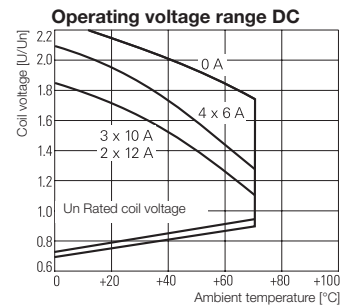
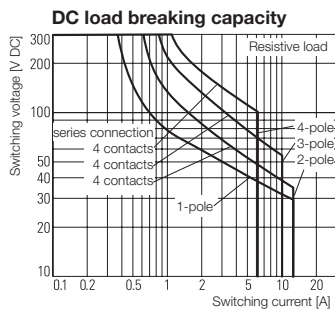
| | |
|--|-------|
| Rated voltage | 240 V |
| Creepage and clearance path input - output | ≤ 4mm |
| Overtoltage category | III |
| Pollution severity | 3 |

Dimensions

| | | |
|-------------------------|----|----------------|
| Length x width x height | mm | 28 / 22.5 / 29 |
|-------------------------|----|----------------|

Note

Applications



**RCM relay
2 CO contact
AC/DC coil**

Type code

Type RIDER Control Multiple

Contacts

- 2 2 CO contacts
- 3 3 CO contacts
- 5 4 CO contacts

Contact material

- 7 AgNi 90/10, with test button
- 8 AgNi 90/10 hgp, with test button

Type of construction

- 0 Standard, 2.8 mm Faston
- 1 Print connections



DC coil

- 006 6 V DC
- 012 12 V DC
- 024 24 V DC
- 048 48 V DC
- 060 60 V DC
- 110 110 V DC
- 220 220 V DC

AC coil

- 506 6 V AC
- 512 12 V AC
- 524 24 V AC
- 548 48 V AC
- 615 115 V AC
- 730 230 V AC

Ordering data

Input

| | 12 V DC 2CO | 24 V DC 2CO | 48 V DC 2CO | 110 V DC 2CO |
|--------------------------|---------------|----------------|----------------|-----------------|
| Rated voltage | 12 V DC | 24 V DC | 48 V DC | 110 V DC |
| DC Response/dropout Volt | 9.0 V / 1.2 V | 18.0 V / 2.4 V | 36.0 V / 4.8 V | 82.5 V / 11.0 V |
| Power rating | 750 mW | 750 mW | 750 mW | 750 mW |
| Rated current DC | 62.5 mA | 31.3 mA | 15.6 mA | 6.8 mA |
| Coil resistance | 192 Ω ±10% | 777 Ω ±10% | 3072 Ω ±10% | 16133 Ω ±15% |

**Ordering data
Relay**

| | 12 V DC 2CO | 24 V DC 2CO | 48 V DC 2CO | 110 V DC 2CO |
|-------------|-----------------------------|-----------------------------|-----------------------------|-----------------------------|
| without LED | Type RCM270012 | Type RCM270024 | Type RCM270048 | Type RCM270110 |
| AgNi 90/10 | Order No. 8689840000 | Order No. 8689860000 | Order No. 8689880000 | Order No. 8689900000 |
| with LED | Type RCM270L12 | Type RCM270L24 | Type RCM270L48 | Type RCM270M10 |
| AgNi 90/10 | Order No. 8689850000 | Order No. 8689870000 | Order No. 8689890000 | Order No. 8689910000 |
| | Type | Type | Type | Type |
| | Order No. | Order No. | Order No. | Order No. |

Note

Ordering data

Input

| | 24 V AC 2CO | 48 V AC 2CO | 115 V AC 2CO | 230 V AC 2CO |
|--------------------------|-----------------|-----------------|-----------------|------------------|
| Rated voltage | 24 V AC | 48 V AC | 115 V AC | 230 V AC |
| AC Response/dropout Volt | 38.4 V / 14.4 V | 48.0 V / 18.0 V | 92.0 V / 34.5 V | 184.0 V / 69.0 V |
| Power rating | 1,0 VA | 1,0 VA | 1,0 VA | 1,0 VA |
| Rated current AC | 41.6 mA | 21.3 mA | 8.8 mA | 4.3 mA |
| Coil resistance | 192 Ω ±10% | 777 Ω ±10% | 4845 Ω ±12% | 19465 Ω ±15% |

**Ordering data
Relay**

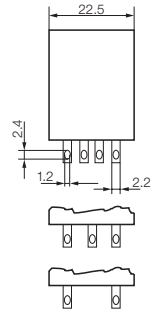
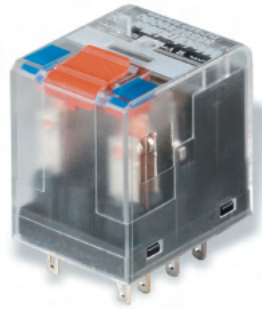
| | 24 V AC 2CO | 48 V AC 2CO | 115 V AC 2CO | 230 V AC 2CO |
|-------------|-----------------------------|-----------------------------|-----------------------------|-----------------------------|
| without LED | Type RCM270524 | Type RCM270548 | Type RCM270615 | Type RCM270730 |
| AgNi 90/10 | Order No. 8689760000 | Order No. 8689780000 | Order No. 8689800000 | Order No. 8689820000 |
| with LED | Type RCM270R24 | Type RCM270R48 | Type RCM270S15 | Type RCM270T30 |
| AgNi 90/10 | Order No. 8689770000 | Order No. 8689790000 | Order No. 8689810000 | Order No. 8689830000 |
| | Type | Type | Type | Type |
| | Order No. | Order No. | Order No. | Order No. |

Note

Relay couplers - RIDERSERIES

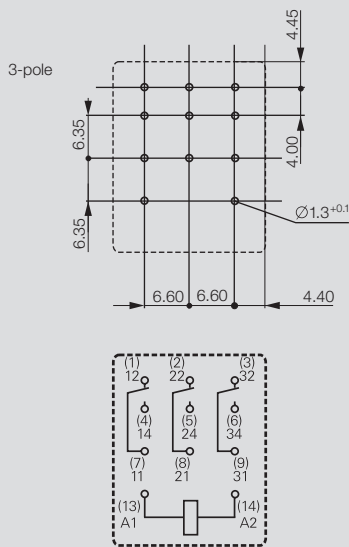
RCM relay 3 CO contact AC/DC coil

- 2500 VA switching capacity
- Solder and plug connection
- Safe-to-touch test button, selectable locking
- White labelling panel



Circuit diagram

View of connections
Dimensions in mm



Output

| | |
|-------------------------------|--|
| max. switching voltage AC | 250 V |
| Continuous current | 10 A |
| Contact base material | AgNi 90/10 |
| Mechanical endurance | AC coil 20x10 ⁶ / DC coil 30x10 ⁶ switching operations |
| Response time / Drop-out time | 15ms / 10ms |

Rated data

| | |
|-------------------------------------|-------------------|
| Status indicator / Free wheel diode | see ordering data |
| Operating temperature | -40 °C...+70 °C |
| UL 94 flammability rating | V-0 |
| Approvals | cURus; CE; VDE; |

Insulation coordination (IEC 60664)

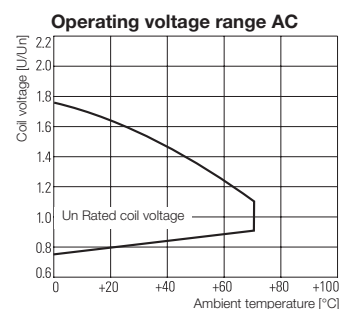
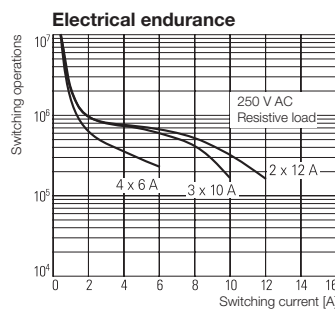
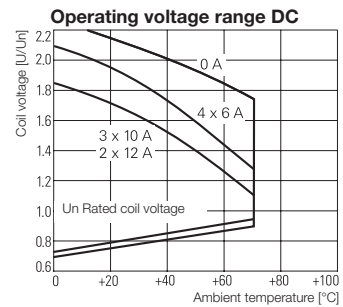
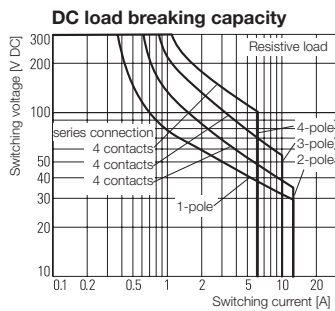
| | |
|--|-------|
| Rated voltage | 240 V |
| Creepage and clearance path input - output | ≤ 4mm |
| Overvoltage category | III |
| Pollution severity | 3 |

Dimensions

| | | |
|-------------------------|----|----------------|
| Length x width x height | mm | 28 / 22.5 / 29 |
|-------------------------|----|----------------|

Note

Applications



**RCM relay
3 CO contact
AC/DC coil**

Type code

Type RIDER Control Multiple

Contacts

- 2 2 CO contacts
- 3 3 CO contacts
- 5 4 CO contacts

Contact material

- 7 AgNi 90/10, with test button
- 8 AgNi 90/10 hgp, with test button

Type of construction

- 0 Standard, 2.8 mm Faston
- 1 Print connections



DC coil

- 006 6 V DC
- 012 12 V DC
- 024 24 V DC
- 048 48 V DC
- 060 60 V DC
- 110 110 V DC
- 220 220 V DC

AC coil

- 506 6 V AC
- 512 12 V AC
- 524 24 V AC
- 548 48 V AC
- 615 115 V AC
- 730 230 V AC

Ordering data

Input

| | 12 V DC 3CO | 24 V DC 3CO | 48 V DC 3CO | 110 V DC 3CO |
|--------------------------|---------------|----------------|----------------|-----------------|
| Rated voltage | 12 V DC | 24 V DC | 48 V DC | 110 V DC |
| DC Response/dropout Volt | 9.0 V / 1.2 V | 18.0 V / 2.4 V | 36.0 V / 4.8 V | 82.5 V / 11.0 V |
| Power rating | 750 mW | 750 mW | 750 mW | 750 mW |
| Rated current DC | 62.5 mA | 31.3 mA | 15.6 mA | 6.8 mA |
| Coil resistance | 192 Ω ±10% | 777 Ω ±10% | 3072 Ω ±10% | 16133 Ω ±15% |

**Ordering data
Relay**

| | | | | | |
|-------------|-----------|-------------------|-------------------|-------------------|-------------------|
| without LED | Type | RCM370012 | RCM370024 | RCM370048 | RCM370110 |
| AgNi 90/10 | Order No. | 8690020000 | 8690040000 | 8690060000 | 8690080000 |
| with LED | Type | RCM370L12 | RCM370L24 | RCM370L48 | RCM370M10 |
| AgNi 90/10 | Order No. | 8694310000 | 8690050000 | 8689940000 | 8690090000 |
| | Type | | | | |
| | Order No. | | | | |

Note

Ordering data

Input

| | 24 V AC 3CO | 48 V AC 3CO | 115 V AC 3CO | 230 V AC 3CO |
|--------------------------|----------------|-----------------|-----------------|------------------|
| Rated voltage | 24 V AC | 48 V AC | 115 V AC | 230 V AC |
| AC Response/dropout Volt | 19.2 V / 7.2 V | 38.4 V / 14.4 V | 92.0 V / 34.5 V | 184.0 V / 69.0 V |
| Power rating | 1,0 VA | 1,0 VA | 1,0 VA | 1,0 VA |
| Rated current AC | 41.6 mA | 21.3 mA | 8.8 mA | 4.3 mA |
| Coil resistance | 192 Ω ±10% | 777 Ω ±10% | 4845 Ω ±12% | 19465 Ω ±15% |

**Ordering data
Relay**

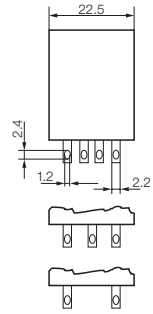
| | | | | | |
|-------------|-----------|-------------------|-------------------|-------------------|-------------------|
| without LED | Type | RCM370524 | RCM370548 | RCM370615 | RCM370730 |
| AgNi 90/10 | Order No. | 8690030000 | on request | 8689980000 | 8690000000 |
| with LED | Type | RCM370R24 | RCM370R48 | RCM370S15 | RCM370T30 |
| AgNi 90/10 | Order No. | 8689950000 | 8689970000 | 8689990000 | 8690010000 |
| | Type | | | | |
| | Order No. | | | | |

Note

Relay couplers - RIDERSERIES

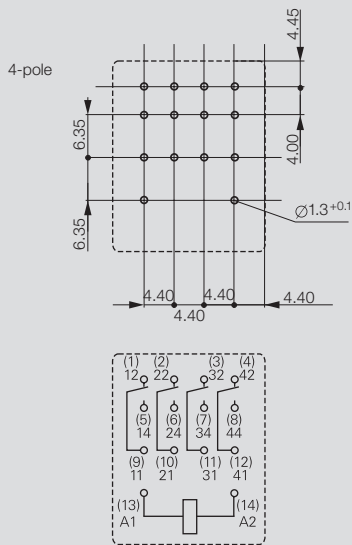
RCM relay 4 CO contact AC/DC coil

- 1500 VA switching capacity
- Solder and plug connection
- AC/DC versions also with gold-plated contacts
- Safe-to-touch test button, selectable locking
- White labelling panel



Circuit diagram

View of connections
Dimensions in mm



Output

| | |
|-------------------------------|--|
| max. switching voltage AC | 250 V |
| Continuous current | 6 A |
| Contact base material | AgNi 90/10 or AgNi 5µm Au |
| Mechanical endurance | AC coil 20x10 ⁶ / DC coil 30x10 ⁶ switching operations |
| Response time / Drop-out time | 15ms / 10ms |

Rated data

| | |
|-------------------------------------|-------------------|
| Status indicator / Free wheel diode | see ordering data |
| Operating temperature | -40 °C...+70 °C |
| UL 94 flammability rating | V-0 |
| Approvals | cURus; CE; VDE; |

Insulation coordination (IEC 60664)

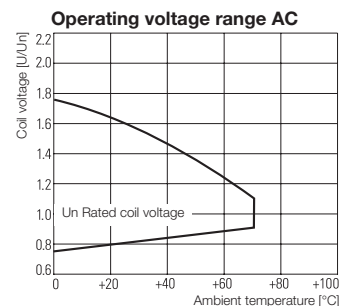
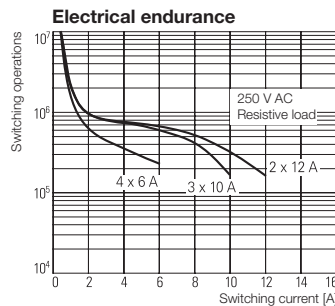
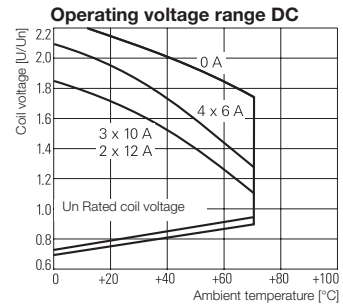
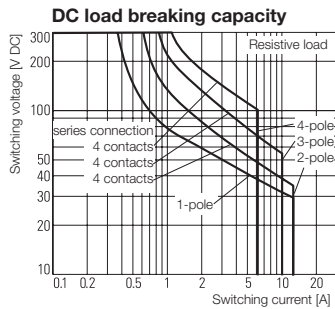
| | |
|--|-------|
| Rated voltage | 240 V |
| Creepage and clearance path input - output | ≤ 3mm |
| Overvoltage category | III |
| Pollution severity | 2 |

Dimensions

| | | |
|-------------------------|----|----------------|
| Length x width x height | mm | 28 / 22.5 / 29 |
|-------------------------|----|----------------|

Note

Applications



**RCM relay
4 CO contact
AC/DC coil**

Type code

Type RIDER Control Multiple

Contacts

- 2 2 CO contacts
- 3 3 CO contacts
- 5 4 CO contacts

Contact material

- 7 AgNi 90/10, with test button
- 8 AgNi 90/10 hgp, with test button

Type of construction

- 0 Standard, 2.8 mm Faston
- 1 Print connections



DC coil

- 006 6 V DC
- 012 12 V DC
- 024 24 V DC
- 048 48 V DC
- 060 60 V DC
- 110 110 V DC
- 220 220 V DC

AC coil

- 506 6 V AC
- 512 12 V AC
- 524 24 V AC
- 548 48 V AC
- 615 115 V AC
- 730 230 V AC

Ordering data

| Input | 12 V DC 4CO | 24 V DC 4CO | 48 V DC 4CO | 110 V DC 4CO |
|--------------------------|---------------|--------------|--------------|---------------|
| Rated voltage | 12 V DC | 24 V DC | 48 V DC | 110 V DC |
| DC Response/dropout Volt | 9.0 V / 1.2 V | 18 V / 2.4 V | 36 V / 4.8 V | 82.5 V / 11 V |
| Power rating | 750 mW | 750 mW | 750 mW | 750 mW |
| Rated current DC | 62.5 mA | 31,3 mA | 15.6 mA | 6.8 mA |
| Coil resistance | 192 Ω ±10% | 777 Ω ±10% | 3072 Ω ±10% | 16133 Ω ±15% |

| Ordering data Relay | | | | |
|-----------------------|-------------------|-------------------|-------------------|-------------------|
| without LED Type | RCM570012 | RCM570024 | RCM570048 | RCM570110 |
| AgNi 90/10 Order No. | 8054360000 | 8690200000 | 8074670000 | 8074700000 |
| with LED Type | RCM570L12 | RCM570L24 | RCM570L48 | RCM570M10 |
| AgNi 90/10 Order No. | 8690180000 | 8690220000 | 8690230000 | 8690240000 |
| without LED Type | RCM580012 | RCM580024 | RCM580048 | RCM580110 |
| AgNi 5µm Au Order No. | on request | 8694460000 | on request | 8829000000 |

| Note | | | | |
|------|--|--|--|--|
| | | | | |

Ordering data

| Input | 24 V AC 4CO | 48 V AC 4CO | 115 V AC 4CO | 230 V AC 4CO |
|--------------------------|----------------|-----------------|---------------|--------------|
| Rated voltage | 24 V AC | 48 V AC | 115 V AC | 230 V AC |
| AC Response/dropout Volt | 19,2 V / 7,2 V | 38,4 V / 14,4 V | 92 V / 34,5 V | 184 V / 69 V |
| Power rating | 1,0 VA | 1,0 VA | 1,0 VA | 1,0 VA |
| Rated current AC | 41,6 mA | 21,3 mA | 8,8 mA | 4,3 mA |
| Coil resistance | 192 Ω ±10% | 777 Ω ±10% | 4845 Ω ±12% | 19465 Ω ±15% |

| Ordering data Relay | | | | |
|-----------------------|-------------------|-------------------|-------------------|-------------------|
| without LED Type | RCM570524 | RCM570548 | RCM570615 | RCM570730 |
| AgNi 90/10 Order No. | 8690110000 | 1180900000 | 1180800000 | 1181100000 |
| with LED Type | RCM570R24 | RCM570R48 | RCM570S15 | RCM570T30 |
| AgNi 90/10 Order No. | 8690120000 | 8690130000 | 8690150000 | 8690160000 |
| without LED Type | RCM580524 | | RCM580615 | RCM580730 |
| AgNi 5µm Au Order No. | 7940008171 | | 8824860000 | 7940007637 |

| Note | | | | |
|------|--|--|--|--|
| | | | | |