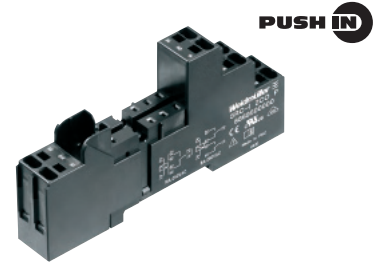
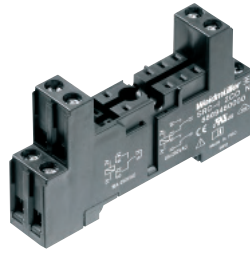


**Accessories for RCI relays**  
**Plug-in module with screw or Push In connection**



**Ordering data**

Description
Plug-in module with screw connections (only for RCL relays), pitch 3.5 mm, snaps onto DIN mounting rail, 1-pole
Plug-in module with screw connections, pitch 5 mm, snaps onto DIN mounting rail, 2-pole
Plug-in module with screw connections, pitch 5 mm, snaps onto DIN mounting rail, 2-pole
Plug-in module with Push In connections, pitch 5 mm, snaps onto DIN mounting rail, 2-pole

Type	Qty.	Order No.
SRC-I 1CO	10	8869470000
SRC-I 2CO	10	8869490000
SRC-I 2CO N	10	8869480000
SRC-I 2CO P	10	8869500000

**Technical data**

Nominal current	1-pole	12 A
	2-pole	2 x 12 A*)
Nominal voltage		240 V~
Dielectric strength, screw/Push In connection		>3000 Veff / 4000 Veff
Ambient temperature		-25 °C ... +85 °C
Ingress protection		IP 20
Connection cross-section (screw connection) / with ferrules		2 x 2.5 mm <sup>2</sup> / 2 x 1.5 mm <sup>2</sup>
Connection cross-section (Push In conn.) / with ferrules		2 x 1.5 mm <sup>2</sup> / 2 x 1.0 mm <sup>2</sup>
Terminal torque / max.		0.5 Nm / 0.7 Nm

\*) With 1-pole relays (16 A), the following terminal connections are required: 11 with 21, 12 with 22, 14 with 24.

**Insulation according to IEC 60644-1**

Rated voltage	250 V
Pollution severity	2
Overvoltage category	III

**Accessories**

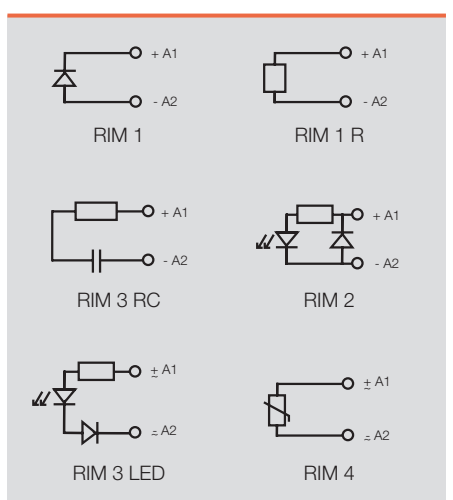
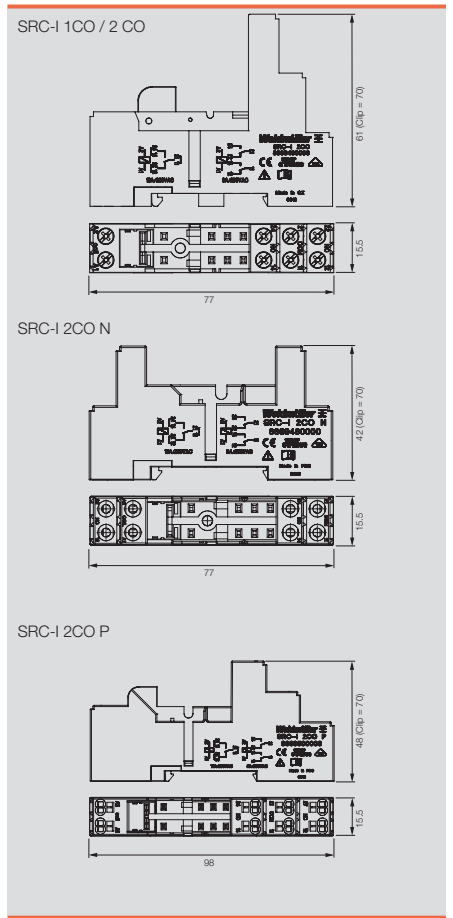
Description	Type	Qty.	Order No.
Plastic retaining	SRC-I CLIP HP	10	8869510000
Marking tag	SRC-I MARK	10	8869530000
Multicard 6 x 15 mm	ESG 6/15 K MC NEUTR. WS	200	1880100000
Cross-connector	SRC-I QV	10	8870840000

**LED and protection modules for SRC-I**

Plug simply into the base module; reverse-connect protection. Connect parallel to coil.

**Ordering data**

Description	Type	Qty.	Order No.	Order No.
Free Wheel diode 1N4007	RIM-I 1 6/230V	10	8869580000	
Resistor 62 kOhm 1 Watt	RIM-I 1 R 110/230V	10	8870830000	
RC element 6 ... 60 V AC	RIM-I 3 6/60VAC	10	8869770000	
RC element 110 ... 230 V AC	RIM-I 3 110/230VAC	10	8869790000	
Varistor protection 24 V	RIM-I 4 24VUC	10	8869710000	
Varistor protection 110 V	RIM-I 4 110VUC	10	8869730000	
Varistor protection 230 V	RIM-I 4 230VUC	10	8869750000	
<b>LED</b>			<b>red</b>	<b>green</b>
LED 6 ... 24 V DC with free wheel diode	RIM-I 2 6/24VDC	10	8869590000	8869600000
LED 24 ... 60 V DC with free wheel diode	RIM-I 2 24/60VDC	10	8869670000	8869680000
LED 110 ... 230 V DC with free wheel diode	RIM-I 2 110/230VDC	10	8869690000	8869700000
LED 6 ... 24 V DC / V AC	RIM-I 3 6/24VUC	10	8869630000	8869640000
LED 24 ... 60 V DC / V AC	RIM-I 3 24/60VUC	10	8869610000	8869620000
LED 110 ... 230 V DC / V AC	RIM-I 3 110/230VUC	10	8869650000	8869660000



**Accessories for miniature relays RCM-I**  
**Plug-in module with screw or Push In connection**



**Ordering data**

Description
Plug-in module with screw connections, snap-on installation, 2-pole
Plug-in module with screw connections, snap-on installation, 3-pole
Plug-in module with screw connections, snap-on installation, 4-pole
Plug-in module with screw connections, snaps onto DIN mounting rails, 4-pole
Plug-in module with Push In connections, snaps onto DIN mounting rails, 4-pole

Type	Qty.	Order No.
SCM-I 2CO	10	8869400000
SCM-I 3CO N	10	8869410000
SCM-I 4CO	10	8869420000
SCM-I 4CO N	10	8869390000
SCM-I 4CO P	10	8869430000

**Technical data**

Nominal current	4-pole 6 A, 3-pole 10 A, 2-pole 12 A
Nominal voltage	300 V AC
Dielectric strength, coil/contacts	> 2500 Veff
Insulation group (VDE 0110b)	C / 250 V AC
Ambient temperature	-45 ... +70 °C <sup>1)</sup>
Protection class (IEC 61810)	IP 20
Connection cross-section (Push In connections) / with ferrules	2 x 1.5 mm <sup>2</sup> / 2 x 1.0 mm <sup>2</sup>
Connection cross-section (screw connections) / with ferrules	2 x 2.5 mm <sup>2</sup> / 2 x 1.5 mm <sup>2</sup>
Terminal torque (screw connection)	0.5 Nm
Max.	0.7 Nm

<sup>1)</sup> At nominal current up to +40 °C, up to +70 °C at 70 %

**Accessories**

Description	Type	Qty.	Order No.
Plastic retaining clip	SCM-I CLIP P	10	8869440000
Metal retaining clip	SCM-I CLIP M	10	8869450000
Markers, individual	SCM-I MARK	10	8869460000
Markers, MultiCard	ESG 6/15 MC RIDERSERIES	200	1881280000
Cross-connector	SCM-I QV	10	8870850000

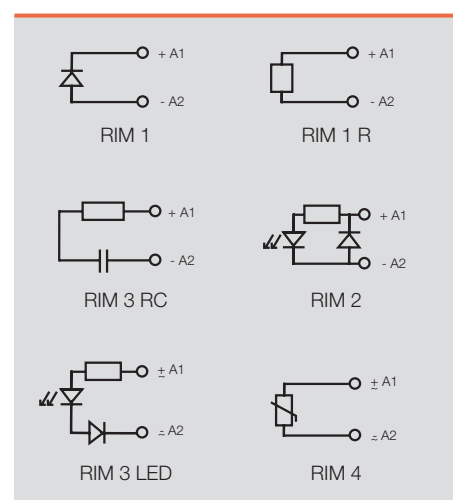
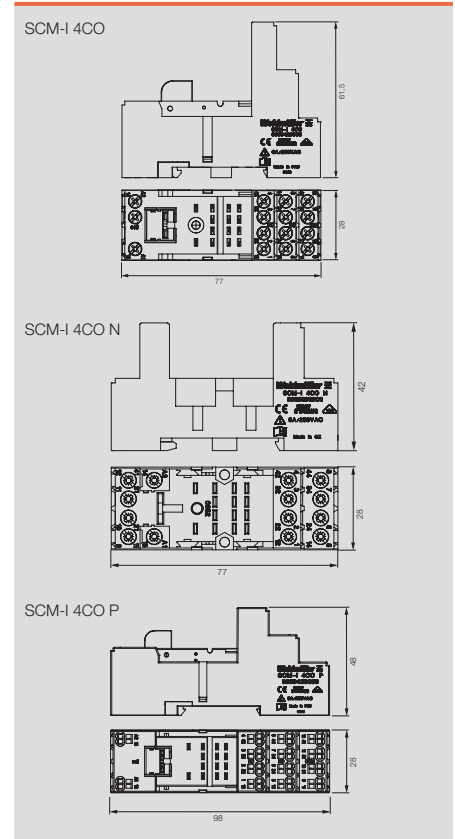
**LED and protection modules for SCM-I**

Plug simply into the base module; reverse-connect protection. Connect parallel to coil.

**Ordering data**

Description	Type	Qty.	Order No.	Order No.
Free Wheel diode 1N4007	RIM-I 1 6/230V	10	8869580000	
Resistor 62 kOhm 1 Watt	RIM-I 1 R 110/230V	10	8870830000	
RC element 6 ... 60 V AC	RIM-I 3 6/60VAC	10	8869770000	
RC element 110 ... 230 V AC	RIM-I 3 110/230VAC	10	8869790000	
Varistor protection 24 V	RIM-I 4 24VUC	10	8869710000	
Varistor protection 110 V	RIM-I 4 110VUC	10	8869730000	
Varistor protection 230 V	RIM-I 4 230VUC	10	8869750000	
<b>LED</b>	<b>red</b>	<b>green</b>		
LED 6 ... 24 V DC with free wheel diode	RIM-I 2 6/24VDC	10	8869590000	8869600000
LED 24 ... 60 V DC with free wheel diode	RIM-I 2 24/60VDC	10	8869670000	8869680000
LED 110 ... 230 V DC with free wheel diode	RIM-I 2 110/230VDC	10	8869690000	8869700000
LED 6 ... 24 V DC / V AC	RIM-I 3 6/24VUC	10	8869630000	8869640000
LED 24 ... 60 V DC / V AC	RIM-I 3 24/60VUC	10	8869610000	8869620000
LED 110 ... 230 V DC / V AC	RIM-I 3 110/230VUC	10	8869650000	8869660000

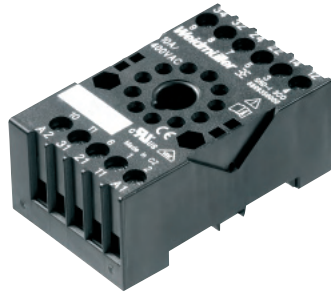
**Dimensions in mm**



## Relay couplers - RIDERSERIES

### Accessories for RRD relays

#### Plug-in module with screw connection



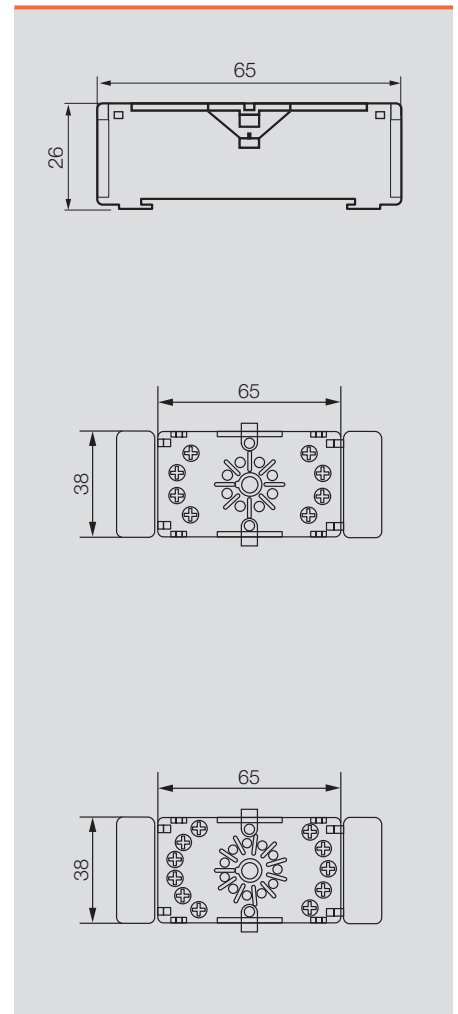
#### Ordering data

Description	Type	Qty	Order No.
Plug-in module with screw connections, 8-pole	SRD-I 2CO	10	8869360000
Plug-in module with screw connections, 11-pole	SRD-I 3CO	10	8869350000
<b>Contact data</b>			
Nominal current	10 A		
Nominal voltage	400 V AC		
Dielectric strength, coil/contacts	> 2500 Veff		
Ambient temperature	-20 °C ... +80 °C		
Ingress protection class (IEC 61810)	IP 20		
Connection cross-section / with ferrules	2 x 2.5 mm <sup>2</sup> / 2 x 1.5 mm <sup>2</sup>		
Terminal torque	0.5 / 0.7 Nm		

#### Retaining clip (metal)

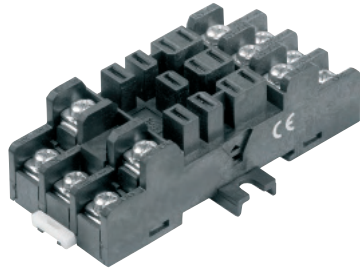
Ordering data			
Accessories for			
Description	Type	Order No.	
Metal retaining clip, RRD	SRD-I CLIP M	8869370000	

#### Dimensions in mm



## Relay couplers - RIDERSERIES

### Accessories for RPW Plug-in module with screw connection



### Ordering data

Description	Type	Qty	Order No.
Plug-in module with screw connections	SPW 3CO	25	8697680000

Contact data	
Nominal current	16 A
Nominal voltage	250 V AC
Dielectric strength, coil/contacts	> 2500 Vms
Ambient temperature	-40 °C ... +40 °C
Terminal torque	0.8 Nm
Max.	1.2 Nm

### Dimensions in mm

