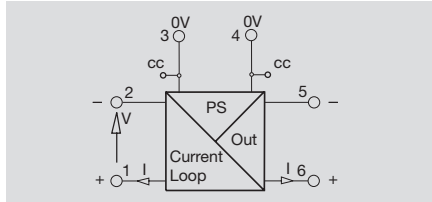


Supply isolator

Without HART

- 2-conductor technology
- 3-way isolation
- Voltage supply cross-connection

MAS RPS



Technical data

Input

Input current	4...20 mA (sensor circuit)
Sensor	2-conductor
Feed voltage	16.5 V / constant for 3...22 mA

Output

Output current	4...20 mA
Output signal limit	22...25 mA
Load resistance voltage/Current	$r_L < 600 \Omega$
Accuracy	$< 0.1 \%$
Offset current	$< 30 \mu\text{A}$
Temperature coefficient	$< 50 \text{ ppm/K}$
Residual ripple	$< 10 \text{ mVeff}$

General data

Supply voltage	24 Vdc +/- 15 %
Power consumption	approx. 1 W
Current-carrying cap. of cross-connect.	$\leq 20 \text{ A}$
Operation temperature	0 °C...+55 °C
Storage temperature	-25 °C...+85 °C
Approvals	CE / cURus

Insulation coordinates

Standards	EN 50178
EMC standards	DIN EN 61326 class B
Rated voltage	300 V
Isolation voltage Input, output	1.5 kVac
Overvoltage category	II
Pollution severity	2

Dimensions

Clamping range (rating- / min. / max.)	mm ²
Length x width x height	mm

Screw connection

	2.50 / 0.50 / 2.50
	88.0 x 6.1 x 97.8

Information

Ordering data

Type of connection

Screw connection

Type	Qty.	Order No.
MAS RPS	1	8721150000

Information

Accessories

Information

Voltage supply 24V and 0V with ZQV 4N/x cross-connection

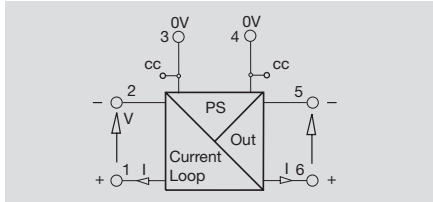
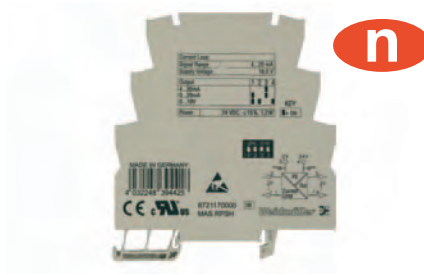
Articles with coloured order number are kept permanently in stock at the central warehouse in Germany.
Delivery times see page X.2

Supply isolator

With HART

- 2-conductor technology
- 3-way isolation
- With Hart transmission
- Output switchable

MAS RPSH



Technical data

Input

Input current	4...20 mA (sensor circuit)
Sensor	2-conductor
Feed voltage	16.5 V / constant for 3...22 mA

Output

Output current	0(4)...20 mA
Output voltage	0...10 V
Output signal limit	22...25 mA resp. 11...12.5 V
Load resistance voltage/Current	$\geq 10 \text{ k}\Omega / < = 600 \Omega$
Accuracy	$I_{out} < 0.1 \% / U_{out} < 0.2\%$
Offset current	$< 30 \mu\text{A}$
Temperature coefficient	$< 50 \text{ ppm/K}$
Residual ripple	$< 10 \text{ mVeff}$

General data

Supply voltage	24 Vdc +/- 15 %
Power consumption	approx. 1 W
Communication	according to HART Specification
Current-carrying cap. of cross-connect.	$\leq 20 \text{ A}$
Operation temperature	0 °C...+55 °C
Storage temperature	-25 °C...+85 °C
Approvals	CE / cURus

Insulation coordinates

Standards	EN 50178 (safe separation)
EMC standards	DIN EN 61326 class B
Rated voltage	600 V
Isolation voltage Input, output	2.5 kVac
Overvoltage category	II
Pollution severity	2

Dimensions

Clamping range (rating- / min. / max.)	mm ²
Length x width x height	mm

Screw connection

	1.50 / 0.50 / 2.50
	88.0 x 6.1 x 97.8

Information

Ordering data

Type of connection

Screw connection

Type	Qty.	Order No.
MAS RPSH	1	8721170000

Information

Accessories

Information

Voltage supply 24V and 0V with ZQV 4N/x cross-connection

Articles with coloured order number are kept permanently in stock at the central warehouse in Germany.
Delivery times see page X.2